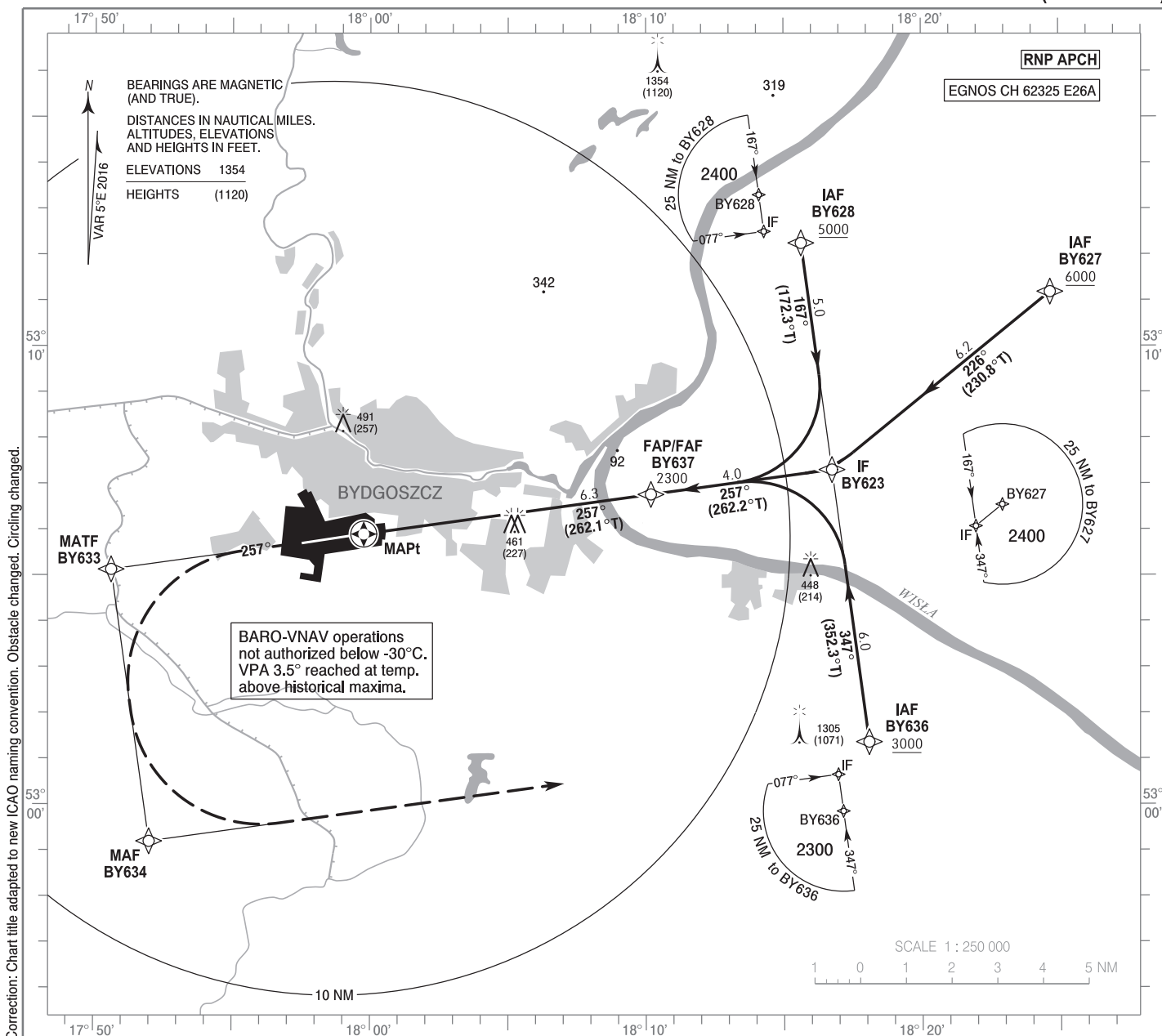


**INSTRUMENT
APPROACH
CHART - ICAO**

AERODROME ELEV 236 ft
THR RWY 26 ELEV 234 ft
HEIGHTS RELATED TO THR RWY 26

Bydgoszcz TOWER 131.005

**Bydgoszcz
RNP
RWY 26 (CAT A/B/C/D)**

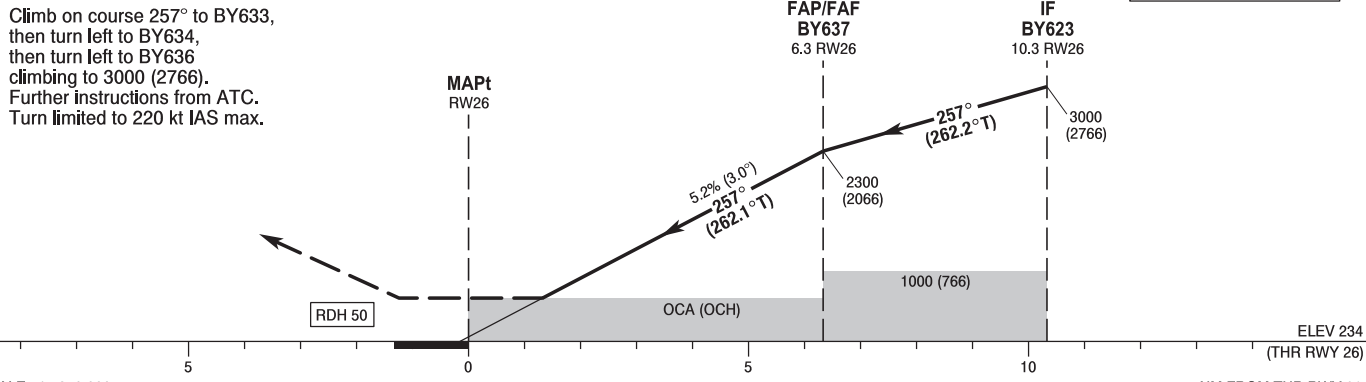


Correction: Chart title adapted to new ICAO naming convention. Obstacle changed. Circling changed.

MISSED APPROACH

Climb on course 257° to BY633, then turn left to BY634, then turn left to BY636 climbing to 3000 (2766). Further instructions from ATC. Turn limited to 220 kt IAS max.

TRANSITION ALTITUDE 6500



SCALE 1 : 250 000

NM FROM THR RWY 26

OCA (OCH)					Distance FAF - MAPt 6.3 NM								
Cat. of ACFT		A	B	C	D	Speed	kt	80	100	120	140	160	180
		Straight - in	LNAV	710 (476)	710 (476)	710 (476)	710 (476)	Time	min : s	4 : 46	3 : 49	3 : 11	2 : 43
LNAV / VNAV	470 (236)		480 (246)	490 (256)	500 (266)	Rate of descent	ft / min	420	530	630	740	840	950
LPV	434 (200)		446 (212)	454 (220)	465 (231)		Final approach distance/altitude (height)						
Circling (OCH AAL)		710 (474)	790 (554)	890 (654)	930 (694)	Distance		5	4	3	2		
						Altitude (height)		1880 (1646)	1560 (1326)	1240 (1006)	930 (696)		

STRONA WOLNA

INTENTIONALLY LEFT BLANK

**Bydgoszcz
RNP
RWY 26 (CAT A/B/C/D)**

EPBY RNP RWY 26 FROM BY628

SEQUENCE NUMBER	PATH TERMINATOR	WAYPOINT IDENTIFIER	FLY - OVER	COURSE/TRACK °M (°T)	DISTANCE (NM)	TURN DIRECTION	ALTITUDE	SPEED (kt)	VPA/TCH	NAV SPEC
001	IF	BY628	-	-	-	-	+5000 ft	-	-	RNP APCH
002	TF	BY623	-	167 (172.29)	5.00	R	+3000 ft	-210	-	RNP APCH
003	TF	BY637	-	257 (262.19)	3.99	-	+2300 ft	-	-	RNP APCH
004	TF	RW26	Y	257 (262.06)	6.34	-	@284 ft	-	-3.00°/50	RNP APCH
005	CF	BY633	-	257 (261.94)	5.57	L	-	-220	-	RNP APCH
006	TF	BY634	-	167 (171.96)	6.00	L	-	-220	-	RNP APCH
007	TF	BY636	-	077 (082.30)	15.90	-	+3000 ft	-220	-	RNP APCH

EPBY RNP RWY 26 FROM BY627

SEQUENCE NUMBER	PATH TERMINATOR	WAYPOINT IDENTIFIER	FLY - OVER	COURSE/TRACK °M (°T)	DISTANCE (NM)	TURN DIRECTION	ALTITUDE	SPEED (kt)	VPA/TCH	NAV SPEC
001	IF	BY627	-	-	-	-	+6000 ft	-	-	RNP APCH
002	TF	BY623	-	226 (230.81)	6.15	R	+3000 ft	-210	-	RNP APCH
003	TF	BY637	-	257 (262.19)	3.99	-	+2300 ft	-	-	RNP APCH
004	TF	RW26	Y	257 (262.06)	6.34	-	@284 ft	-	-3.00°/50	RNP APCH
005	CF	BY633	-	257 (261.94)	5.57	L	-	-220	-	RNP APCH
006	TF	BY634	-	167 (171.96)	6.00	L	-	-220	-	RNP APCH
007	TF	BY636	-	077 (082.30)	15.90	-	+3000 ft	-220	-	RNP APCH

EPBY RNP RWY 26 FROM BY636

SEQUENCE NUMBER	PATH TERMINATOR	WAYPOINT IDENTIFIER	FLY - OVER	COURSE/TRACK °M (°T)	DISTANCE (NM)	TURN DIRECTION	ALTITUDE	SPEED (kt)	VPA/TCH	NAV SPEC
001	IF	BY636	-	-	-	-	+3000 ft	-	-	RNP APCH
002	TF	BY623	-	347 (352.29)	6.00	L	+3000 ft	-210	-	RNP APCH
003	TF	BY637	-	257 (262.19)	3.99	-	+2300 ft	-	-	RNP APCH
004	TF	RW26	Y	257 (262.06)	6.34	-	@284 ft	-	-3.00°/50	RNP APCH
005	CF	BY633	-	257 (261.94)	5.57	L	-	-220	-	RNP APCH
006	TF	BY634	-	167 (171.96)	6.00	L	-	-220	-	RNP APCH
007	TF	BY636	-	077 (082.30)	15.90	-	+3000 ft	-220	-	RNP APCH

WAYPOINT IDENTIFIER	COORDINATES	
BY628 (IAF)	53°12'15.2"N	018°15'38.1"E
BY627 (IAF)	53°11'11.1"N	018°24'40.7"E
BY636 (IAF)	53°01'22.2"N	018°18'05.0"E
BY623 (IF)	53°07'18.4"N	018°16'45.0"E
BY637 (FAF/P)	53°06'46.1"N	018°10'10.9"E
RW26 (MAPt)	53°05'54.1"N	017°59'46.2"E
BY633 (MATF)	53°05'07.6"N	017°50'36.9"E
BY634 (MAF)	52°59'11.7"N	017°52'00.4"E

SBAS FAS Data Block Coding Data

EPBY RNP RWY 26	
Input Data	
Parameters	Values
Operation Type:	0
SBAS Provider:	1
Airport Identifier:	EPBY
Runway:	26
Runway Direction:	0
Approach Performance Designator:	0
Route Indicator:	
Reference Path Data Selector:	0
Reference Path Identifier:	E26A
LTP/FTP Latitude:	530554.0900N
LTP/FTP Longitude:	0175946.1500E
LTP/FTP Ellipsoidal Height (metres):	102.1
FPAP Latitude:	530542.3590N
Delta FPAP Latitude (seconds):	-11.7310
FPAP Longitude:	0175726.7320E
Delta FPAP Longitude (seconds):	-139.4180
Threshold Crossing Height:	50.0
TCH Units Selector:	0
Glidepath Angle (degrees):	3.00
Course Width (metres):	105.00
Length Offset (metres):	120
HAL (metres):	40
VAL (metres):	35

Output Data	
Data Block	10 19 02 10 05 1A 00 00 01 36 32 05 54 8F C9 16 CC 1D B9 07 FD 17 5A A4 FF CC BE FB F4 01 2C 01 64 0F C8 AF AC 34 CC 09
Calculated CRC Value	AC34CC09

Required Additional Data (not CRC wrapped)	
ICAO Code	BY
LTP/FTP Orthometric Height (metres)	71.2