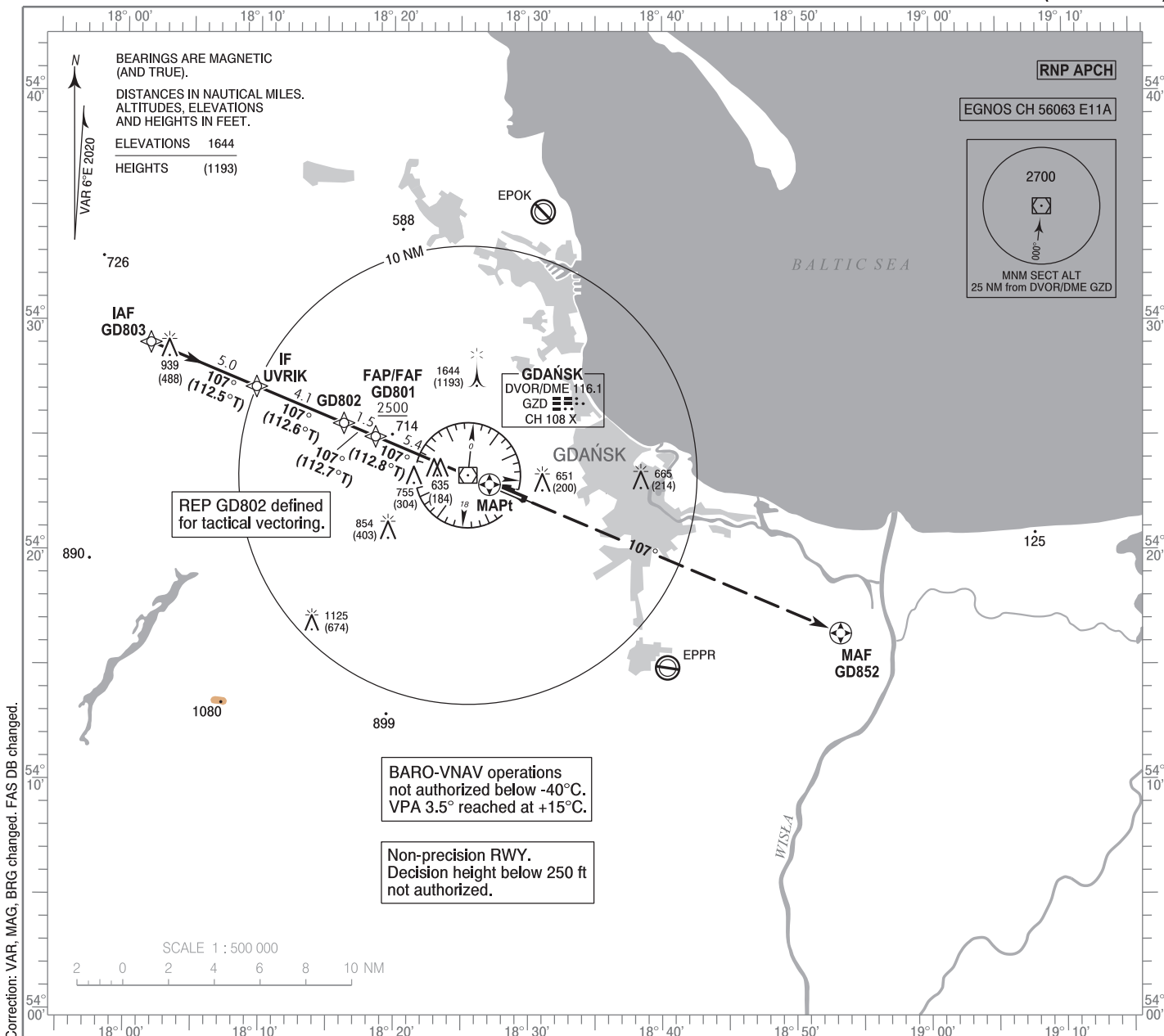


**INSTRUMENT
APPROACH
CHART - ICAO**

AERODROME ELEV 489 ft
THR RWY 11 ELEV 451 ft
HEIGHTS RELATED TO THR RWY 11

Gdańsk DIRECTOR 133.660
Gdańsk APPROACH 127.280
Gdańsk TOWER 118.105
ATIS 129.630

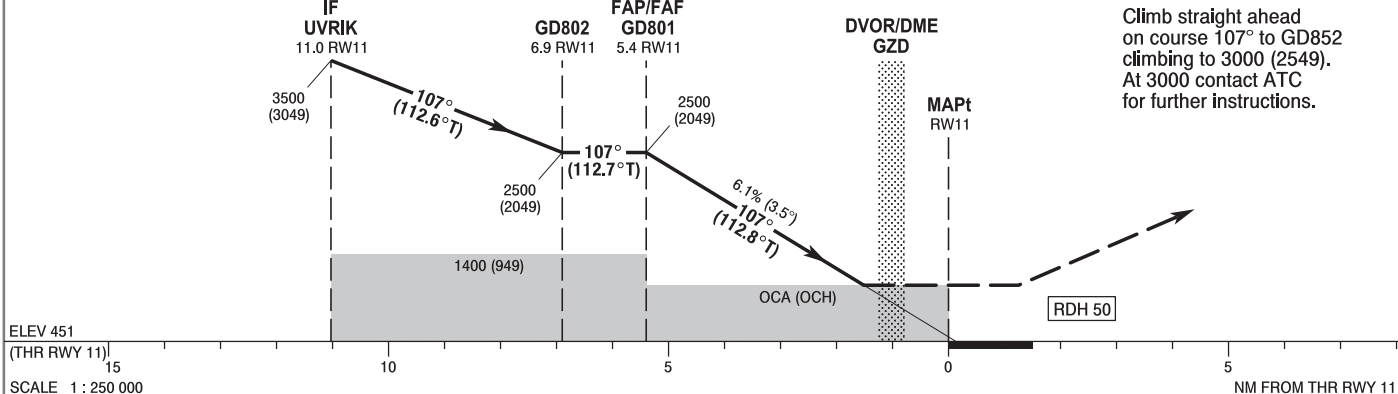
**GDĄŃSK Lech Wałęsa
RNP
RWY 11 (CAT A/B/C/D)**



Correction: VAR, MAG, BRG changed. FAS DB changed.

TRANSITION ALTITUDE 6500

MISSED APPROACH
Climb straight ahead on course 107° to GD852 climbing to 3000 (2549). At 3000 contact ATC for further instructions.



OCA (OCH)					Distance FAF - MAPt 5.4 NM								
Cat. of ACFT		A	B	C	D	Speed	kt	80	100	120	140	160	180
		Straight - in	LNAV	1060 (609)	1060 (609)	1060 (609)	1060 (609)	Time	min : s	4 : 03	3 : 14	2 : 42	2 : 19
LNAV / VNAV	740 (289)		750 (299)	760 (309)	770 (319)	Rate of descent	ft / min	490	610	740	860	980	1110
LPV	656 (205)		668 (217)	680 (229)	692 (241)		Final approach distance/altitude (height)						
Circling (OCH AAL)*		1060 (571)	1060 (571)	1160 (671)	1250 (761)	Distance	5	4	3	2			
*ACFT cat. D circling south of aerodrome only.						Altitude (height)	2360 (1909)	1990 (1539)	1620 (1169)	1250 (799)			

STRONA WOLNA

INTENTIONALLY LEFT BLANK

GDAŃSK Lech Walesa
RNP
RWY 11 (CAT A/B/C/D)

EPGD RNP RWY 11 FROM GD803

SEQUENCE NUMBER	PATH TERMINATOR	WAYPOINT IDENTIFIER	FLY - OVER	COURSE/TRACK °M (°T)	DISTANCE (NM)	TURN DIRECTION	ALTITUDE	SPEED (kt)	VPA/TCH	NAV SPEC
001	IF	GD803	-	-	-	-	5000 ft	-	-	RNP APCH
002	TF	UVRİK	-	107 (112.53)	5.00	-	+3500 ft	-	-	RNP APCH
003	TF	GD802	-	107 (112.56)	4.13	-	+2500 ft	-	-	RNP APCH
004	TF	GD801	-	107 (112.71)	1.50	-	+2500 ft	-	-	RNP APCH
005	TF	RW11	Y	107 (112.81)	5.39	-	@501 ft	-	-3.5°/50	RNP APCH
006	CF	GD852	Y	107 (112.81)	16.64	-	+3000 ft	-	-	RNP APCH

WAYPOINT IDENTIFIER	COORDINATES	
GD803 (IAF)	54°29'02.0"N	018°01'49.2"E
UVRİK (IF)	54°27'07.0"N	018°09'44.0"E
GD802	54°25'32.0"N	018°16'15.4"E
GD801 (FAP/FAF)	54°24'57.3"N	018°18'37.4"E
RW11 (MAPt)	54°22'51.8"N	018°27'07.4"E
GD852 (MAF)	54°16'22.8"N	018°53'16.8"E

SBAS FAS Data Block Coding Data

EPGD RNP RWY 11	
Input Data	
Parameters	Values
Operation Type:	0
SBAS Provider:	1 (EGNOS)
Airport Identifier:	EPGD
Runway:	11
Runway Letter:	0 (None)
Approach Performance Designator:	0
Route Indicator:	
Reference Path Data Selector:	0
Reference Path Identifier:	E11A
LTP/FTP Latitude:	542251.8400N
LTP/FTP Longitude:	0182707.3800E
LTP/FTP Ellipsoidal Height (metres):	166.3
FPAP Latitude:	542216.5600N
Delta FPAP Latitude (seconds):	-35.2800
FPAP Longitude:	0182930.1800E
Delta FPAP Longitude (seconds):	142.8000
Threshold Crossing Height:	50.0
TCH Units Selector:	0 (feet)
Glidepath Angle (degrees):	3.49
Course Width (metres):	105.00
Length Offset (metres):	0
HAL (metres):	40.0
VAL (metres):	35.0

Output Data	
Data Block	10 04 07 10 05 0B 00 00 01 31 31 05 80 7B 56 17 E8 33 EB 07 7F 1A 60 EC FE A0 5B 04 F4 01 5D 01 64 00 C8 AF D6 42 E6 30
Calculated CRC Value	D642E630

Required Additional Data (not CRC wrapped)	
ICAO Code	GD
LTP/FTP Orthometric Height (metres)	137.5