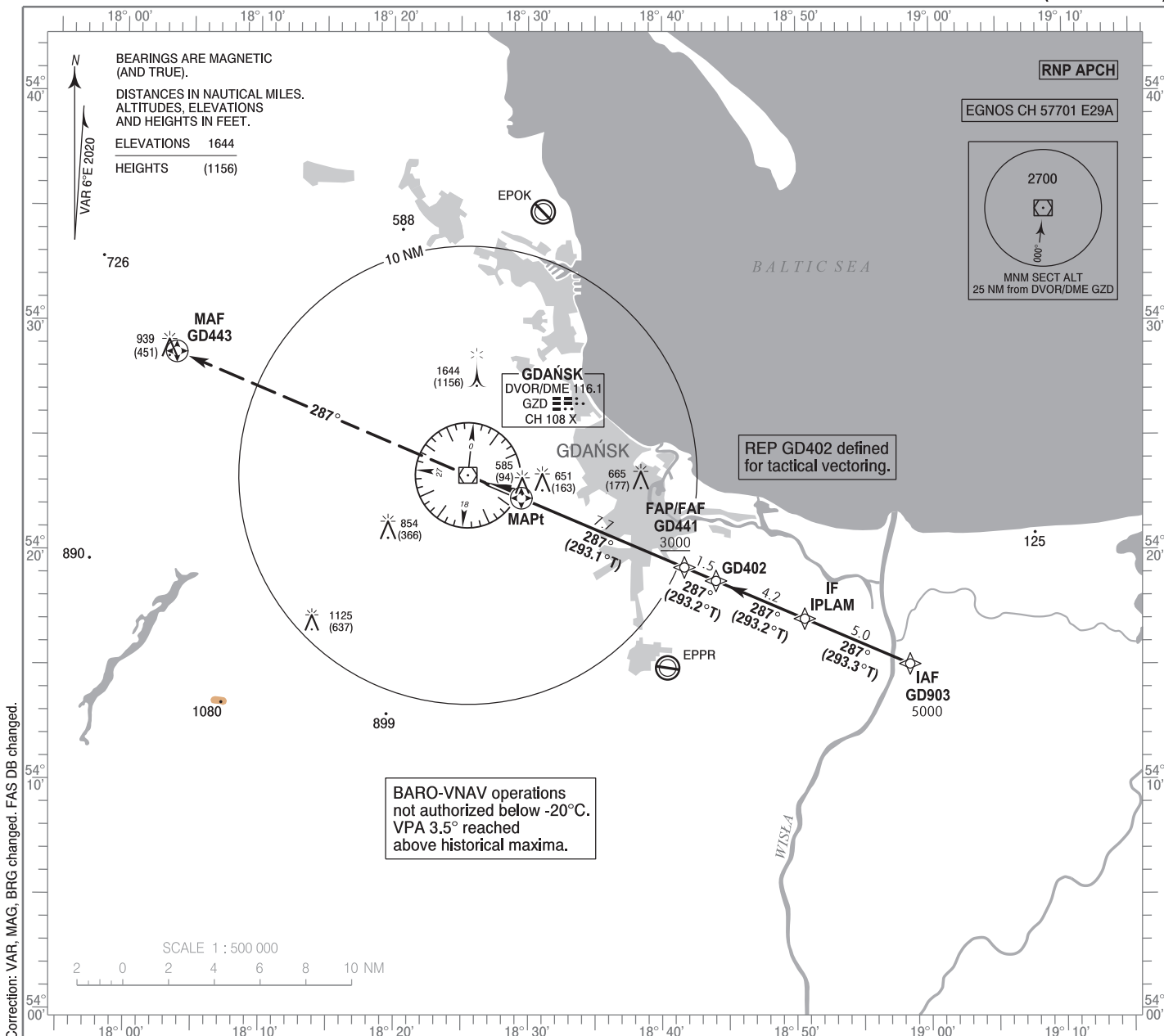


**INSTRUMENT
APPROACH
CHART - ICAO**

AERODROME ELEV 489 ft
THR RWY 29 ELEV 488 ft
HEIGHTS RELATED TO THR RWY 29

Gdańsk DIRECTOR 133.660
Gdańsk APPROACH 127.280
Gdańsk TOWER 118.105
ATIS 129.630

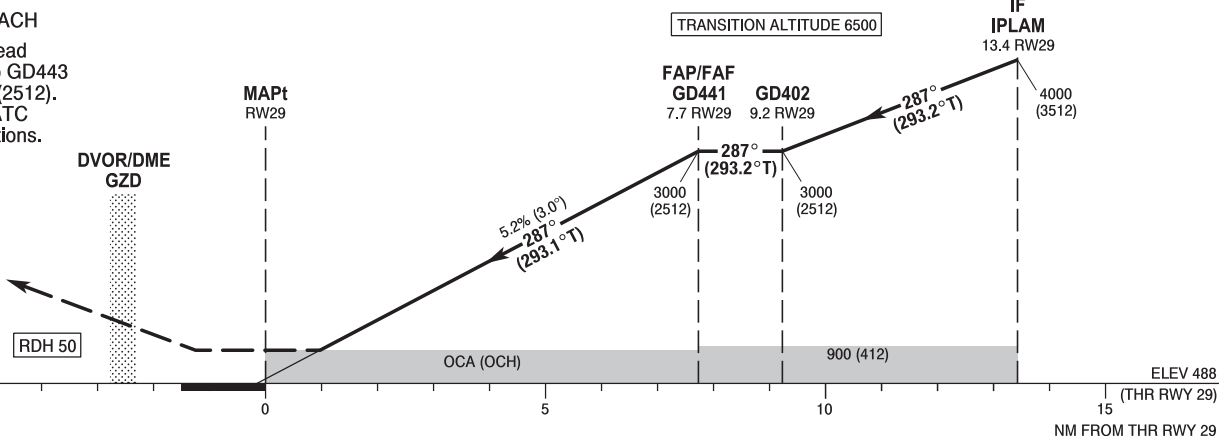
**GDĄŃSK Lech Wałęsa
RNP
RWY 29 (CAT A/B/C/D)**



Correction: VAR, MAG, BRG changed. FAS DB changed.

MISSED APPROACH

Climb straight ahead on course 287° to GD443 climbing to 3000 (2512). At 3000 contact ATC for further instructions.



SCALE 1 : 250 000

OCA (OCH)					Distance FAF - MAPt 7.7 NM								
Cat. of ACFT		A	B	C	D	Speed	kt	80	100	120	140	160	180
		Straight - in	LNAV	850 (362)	850 (362)	850 (362)	850 (362)	Time	min : s	5 : 48	4 : 38	3 : 52	3 : 19
LNAV / VNAV	740 (252)		740 (252)	740 (252)	750 (262)	Rate of descent	ft / min	420	530	630	740	840	950
LPV	689 (201)		701 (212)	709 (221)	720 (232)			Final approach distance/altitude (height)					
Circling (OCH AAL)*		960 (471)	990 (501)	1160 (671)	1250 (761)	Distance	6	5	4	3	2		
*ACFT cat. D circling south of aerodrome only.						Altitude (height)	2450 (1962)	2130 (1642)	1810 (1322)	1500 (1012)	1180 (692)		

STRONA WOLNA

INTENTIONALLY LEFT BLANK

**GDAŃSK Lech Walesa
RNP
RWY 29 (CAT A/B/C/D)**

EPGD RNP RWY 29 FROM GD903

SEQUENCE NUMBER	PATH TERMINATOR	WAYPOINT IDENTIFIER	FLY - OVER	COURSE/TRACK °M (°T)	DISTANCE (NM)	TURN DIRECTION	ALTITUDE	SPEED (kt)	VPA/TCH	NAV SPEC
001	IF	GD903	-	-	-	-	5000 ft	-	-	RNP APCH
002	TF	IPLAM	-	287 (293.34)	5.00	-	+4000 ft	-	-	RNP APCH
003	TF	GD402	-	287 (293.24)	4.21	-	+3000 ft	-	-	RNP APCH
004	TF	GD441	-	287 (293.15)	1.50	-	+3000 ft	-	-	RNP APCH
005	TF	RW29	Y	287 (293.12)	7.73	-	@538 ft	-	-3.0°/50	RNP APCH
006	CF	GD443	Y	287 (293.12)	16.33	-	+3000 ft	-	-	RNP APCH

WAYPOINT IDENTIFIER	COORDINATES	
GD903 (IAF)	54°15'02.5"N	018°58'26.7"E
IPLAM (IF)	54°17'00.8"N	018°50'37.0"E
GD402	54°18'40.1"N	018°44'00.6"E
GD441 (FAP/FAF)	54°19'15.4"N	018°41'39.4"E
RW29 (MAPt)	54°22'16.6"N	018°29'30.2"E
GD443 (MAF)	54°28'37.8"N	018°03'45.3"E

SBAS FAS Data Block Coding Data

EPGD RNP RWY 29	
Input Data	
Parameters	Values
Operation Type:	0
SBAS Provider:	1 (EGNOS)
Airport Identifier:	EPGD
Runway:	29
Runway Direction:	0 (None)
Approach Performance Designator:	0
Route Indicator:	
Reference Path Data Selector:	0
Reference Path Identifier:	E29A
LTP/FTP Latitude:	542216.5600N
LTP/FTP Longitude:	0182930.1800E
LTP/FTP Ellipsoidal Height (metres):	177.5
FPAP Latitude:	542253.2380N
Delta FPAP Latitude (seconds):	36.6780
FPAP Longitude:	0182701.7165E
Delta FPAP Longitude (seconds):	-148.4635
Threshold Crossing Height:	50.0
TCH Units Selector:	0 (feet)
Glidepath Angle (degrees):	3.00
Course Width (metres):	105.00
Length Offset (metres):	112
HAL (metres):	40.0
VAL (metres):	35.0

Output Data	
Data Block	10 04 07 10 05 1D 00 00 01 39 32 05 E0 67 55 17 88 8F EF 07 EF 1A 8C 1E 01 21 78 FB F4 01 2C 01 64 0E C8 AF 35 59 8B EC
Calculated CRC Value	35598BEC

Required Additional Data (not CRC wrapped)	
ICAO Code	GD
LTP/FTP Orthometric Height (metres)	148.8