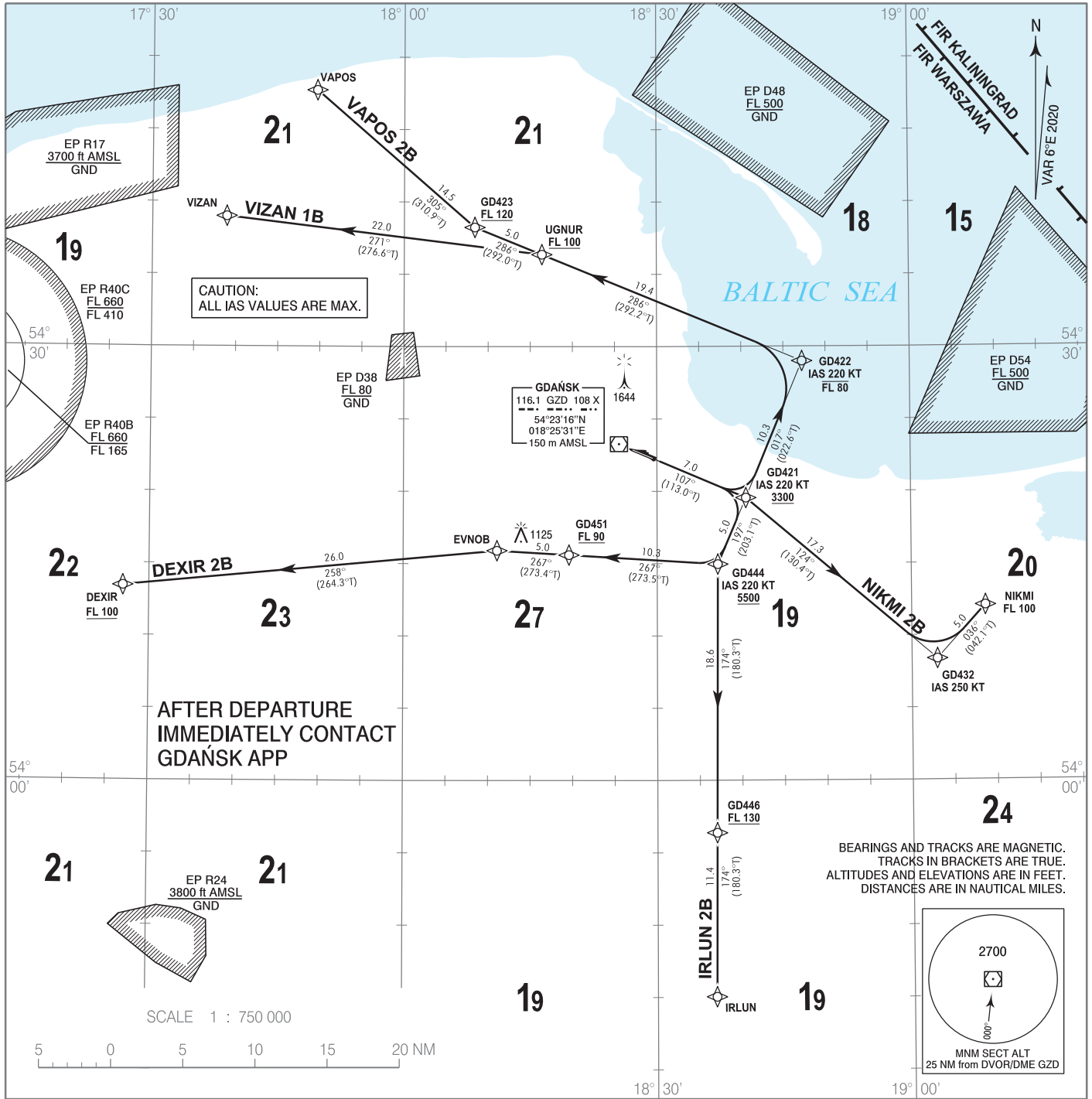


**RNAV 1 (GNSS)
STANDARD DEPARTURE CHART
INSTRUMENT (SID) - ICAO**

TRANSITION ALTITUDE 6500

Gdańsk DIRECTOR	133.660
Gdańsk APPROACH	127.280
Gdańsk GROUND	131.330
Gdańsk TOWER	118.105

**GDAŃSK Lech Walesa
RWY 11**



Correction: FREQ Gdańsk DELIVERY changed to Gdańsk GROUND.

1. RNAV 1 approval required to conduct these procedures without additional restrictions. However it is possible to utilize RNAV 1 trajectories by RNAV 5 only approved a/c. The following restriction apply: a/c equipped with RNAV 5 systems without navigation database, and requiring manual data input are exempted from the utilization of RNAV 1 procedures.
2. All a/c which can not follow and utilize RNAV 1 procedures shall advise ATC before start-up. Radar vectoring will be provided, usually along published procedures.
3. Expect direct routing/shortcuts by ATC whenever possible (especially during off-peak hours).
4. MAX IAS during initial turn as indicated in route description.
5. A/c unable to achieve SID profile restrictions must request non-standard departure from ATC before start-up.

RADIO COMMUNICATION FAILURE PROCEDURE

Set the transponder to 7600.

If the climbing clearance did not include a time or geographical limit, maintain for 7 minutes the level and speed cleared by ATC, then continue in accordance with the FPL.
If the a/c was radar vectored, continue for 3 minutes on the assigned heading, then proceed in the most direct manner to the last SID point, climbing to the FPL flight level.

**RNAV 1 (GNSS)
STANDARD DEPARTURE CHART
INSTRUMENT (SID) - ICAO****GDAŃSK Lech Walesa
RWY 11****VAPOS 2B**

PDG 7% REQUIRED DUE TO OPERATIONAL REASONS UP TO GD423

SEQUENCE NUMBER	PATH TERMINATOR	WAYPOINT IDENTIFIER	FLY - OVER	COURSE/TRACK °M (°T)	DISTANCE (NM)	TURN DIRECTION	ALTITUDE	SPEED (kt)	NAV SPEC
001	CF	GD421	-	107 (113.0)	6.99	-	+3300 ft	-220	RNAV 1
002	TF	GD422	-	017 (022.6)	10.25	-	-FL80	-220	RNAV 1
003	TF	UGNUR	-	286 (292.2)	19.42	-	+FL100	-	RNAV 1
004	TF	GD423	-	286 (292.0)	5.00	-	+FL120	-	RNAV 1
005	TF	VAPOS	-	305 (310.9)	14.46	-	-	-	RNAV 1

NIKMI 2B

PDG 7% REQUIRED DUE TO OPERATIONAL REASONS UNTIL FL100

SEQUENCE NUMBER	PATH TERMINATOR	WAYPOINT IDENTIFIER	FLY - OVER	COURSE/TRACK °M (°T)	DISTANCE (NM)	TURN DIRECTION	ALTITUDE	SPEED (kt)	NAV SPEC
001	CF	GD421	-	107 (113.0)	6.99	-	+3300 ft	-	RNAV 1
002	TF	GD432	-	124 (130.4)	17.30	-	-	-250	RNAV 1
003	TF	NIKMI	-	036 (042.1)	5.00	-	FL100	-	RNAV 1

IRLUN 2B

PDG 7% REQUIRED DUE TO OPERATIONAL REASONS UP TO GD446

SEQUENCE NUMBER	PATH TERMINATOR	WAYPOINT IDENTIFIER	FLY - OVER	COURSE/TRACK °M (°T)	DISTANCE (NM)	TURN DIRECTION	ALTITUDE	SPEED (kt)	NAV SPEC
001	CF	GD421	-	107 (113.0)	6.99	-	+3300 ft	-220	RNAV 1
002	TF	GD444	-	197 (203.1)	5.00	-	+5500 ft	-	RNAV 1
003	TF	GD446	-	174 (180.3)	18.61	-	+FL130	-	RNAV 1
004	TF	IRLUN	-	174 (180.3)	11.36	-	-	-	RNAV 1

DEXIR 2B

PDG 7% REQUIRED DUE TO OPERATIONAL REASONS UNTIL FL90

SEQUENCE NUMBER	PATH TERMINATOR	WAYPOINT IDENTIFIER	FLY - OVER	COURSE/TRACK °M (°T)	DISTANCE (NM)	TURN DIRECTION	ALTITUDE	SPEED (kt)	NAV SPEC
001	CF	GD421	-	107 (113.0)	6.99	-	+3300 ft	-220	RNAV 1
002	TF	GD444	-	197 (203.1)	5.00	-	+5500 ft	-220	RNAV 1
003	TF	GD451	-	267 (273.5)	10.33	-	+FL90	-	RNAV 1
004	TF	EVNOB	-	267 (273.4)	5.00	-	-	-	RNAV 1
005	TF	DEXIR	-	258 (264.3)	26.01	-	+FL100	-	RNAV 1

VIZAN 1B

PDG 7% REQUIRED DUE TO OPERATIONAL REASONS UP TO UGNUR

SEQUENCE NUMBER	PATH TERMINATOR	WAYPOINT IDENTIFIER	FLY - OVER	COURSE/TRACK °M (°T)	DISTANCE (NM)	TURN DIRECTION	ALTITUDE	SPEED (kt)	NAV SPEC
001	CF	GD421	-	107 (113.0)	6.99	-	+3300 ft	-220	RNAV 1
002	TF	GD422	-	017 (022.6)	10.25	-	-FL80	-220	RNAV 1
003	TF	UGNUR	-	286 (292.2)	19.42	-	+FL100	-	RNAV 1
004	TF	VIZAN	-	271 (276.6)	21.96	-	-	-	RNAV 1

WAYPOINT IDENTIFIER	COORDINATES	
	DEXIR	54°13'27.0"N
NIKMI	54°12'04.7"N	019°08'42.3"E
VAPOS	54°47'43.0"N	017°49'36.0"E
IRLUN	53°45'02.1"N	018°36'53.5"E
EVNOB	54°15'53.9"N	018°11'04.7"E
UGNUR	54°36'22.2"N	018°16'22.8"E
VIZAN	54°39'00.0"N	017°38'52.0"E
DER11 (RW29)	54°22'16.6"N	018°29'30.2"E
GD421	54°19'32.6"N	018°40'30.5"E
GD422	54°28'59.7"N	018°47'13.4"E
GD423	54°38'14.7"N	018°08'24.9"E
GD432	54°08'22.8"N	019°02'59.9"E
GD444	54°14'57.2"N	018°37'09.9"E
GD446	53°56'22.6"N	018°36'59.4"E
GD451	54°15'36.0"N	018°19'35.1"E