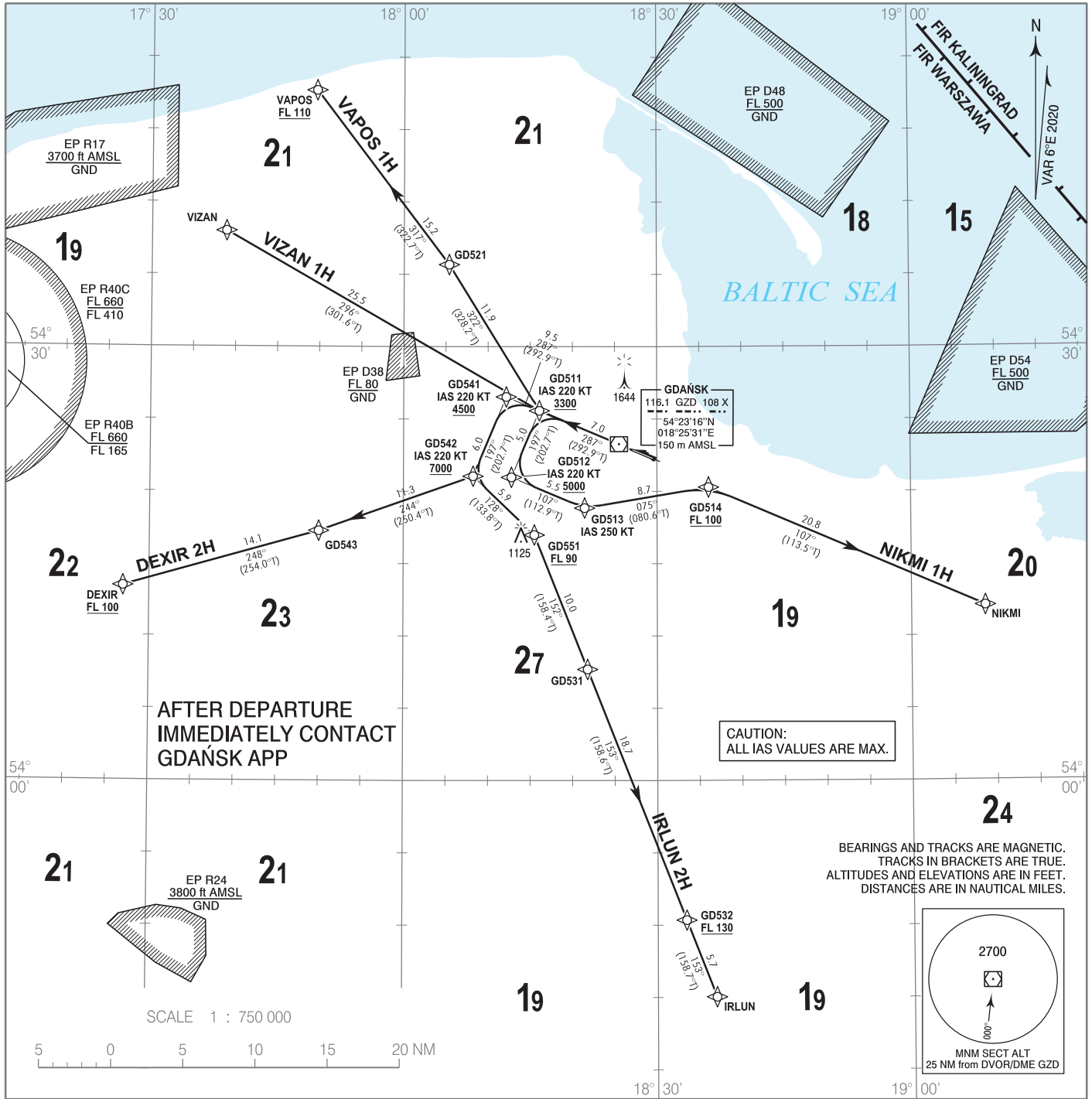


**RNAV 1 (GNSS)
STANDARD DEPARTURE CHART
INSTRUMENT (SID) - ICAO**

TRANSITION ALTITUDE 6500

Gdańsk DIRECTOR	133.660
Gdańsk APPROACH	127.280
Gdańsk GROUND	131.330
Gdańsk TOWER	118.105

**GDAŃSK Lech Walesa
RWY 29**



Correction: FREQ Gdańsk DELIVERY changed to Gdańsk GROUND.

1. RNAV 1 approval required to conduct these procedures without additional restrictions. However it is possible to utilize RNAV 1 trajectories by RNAV 5 only approved a/c. The following restriction apply: a/c equipped with RNAV 5 systems without navigation database, and requiring manual data input are exempted from the utilization of RNAV 1 procedures.
2. All a/c which can not follow and utilize RNAV 1 procedures shall advise ATC before start-up. Radar vectoring will be provided, usually along published procedures.
3. Expect direct routing/shortcuts by ATC whenever possible (especially during off-peak hours).
4. MAX IAS during initial turn as indicated in route description.
5. A/c unable to achieve SID profile restrictions must request non-standard departure from ATC before start-up.

RADIO COMMUNICATION FAILURE PROCEDURE

Set the transponder to 7600.

If the climbing clearance did not include a time or geographical limit, maintain for 7 minutes the level and speed cleared by ATC, then continue in accordance with the FPL.
If the a/c was radar vectored, continue for 3 minutes on the assigned heading, then proceed in the most direct manner to the last SID point, climbing to the FPL flight level.

**RNAV 1 (GNSS)
STANDARD DEPARTURE CHART
INSTRUMENT (SID) - ICAO****GDAŃSK Lech Walesa
RWY 29****VAPOS 1H**

PDG 7% REQUIRED DUE TO OPERATIONAL REASONS UNTIL FL90

SEQUENCE NUMBER	PATH TERMINATOR	WAYPOINT IDENTIFIER	FLY - OVER	COURSE/TRACK °M (°T)	DISTANCE (NM)	TURN DIRECTION	ALTITUDE	SPEED (kt)	NAV SPEC
001	CF	GD511	-	287 (292.9)	7.00	-	+3300 ft	-	RNAV 1
002	TF	GD521	-	322 (328.2)	11.89	-	-	-	RNAV 1
003	TF	VAPOS	-	317 (322.7)	15.15	-	+FL110	-	RNAV 1

NIKMI 1H

PDG 7% REQUIRED DUE TO OPERATIONAL REASONS UP TO GD514

SEQUENCE NUMBER	PATH TERMINATOR	WAYPOINT IDENTIFIER	FLY - OVER	COURSE/TRACK °M (°T)	DISTANCE (NM)	TURN DIRECTION	ALTITUDE	SPEED (kt)	NAV SPEC
001	CF	GD511	-	287 (292.9)	7.00	-	+3300 ft	-220	RNAV 1
002	TF	GD512	-	197 (202.7)	5.00	-	+5000 ft	-220	RNAV 1
003	TF	GD513	-	107 (112.9)	5.50	-	-	-250	RNAV 1
004	TF	GD514	-	075 (080.6)	8.70	-	+FL100	-	RNAV 1
005	TF	NIKMI	-	107 (113.5)	20.80	-	-	-	RNAV 1

IRLUN 2H

PDG 7% REQUIRED DUE TO OPERATIONAL REASONS UP TO GD532

SEQUENCE NUMBER	PATH TERMINATOR	WAYPOINT IDENTIFIER	FLY - OVER	COURSE/TRACK °M (°T)	DISTANCE (NM)	TURN DIRECTION	ALTITUDE	SPEED (kt)	NAV SPEC
001	CF	GD541	-	287 (292.9)	9.48	-	+4500 ft	-220	RNAV 1
002	TF	GD542	-	197 (202.7)	5.96	-	+7000 ft	-220	RNAV 1
003	TF	GD551	-	128 (133.8)	5.88	-	+FL90	-	RNAV 1
004	TF	GD531	-	152 (158.4)	10.02	-	-	-	RNAV 1
005	TF	GD532	-	153 (158.6)	18.68	-	+FL130	-	RNAV 1
006	TF	IRLUN	-	153 (158.7)	5.71	-	-	-	RNAV 1

DEXIR 2H

PDG 7% REQUIRED DUE TO OPERATIONAL REASONS UP TO GD543

SEQUENCE NUMBER	PATH TERMINATOR	WAYPOINT IDENTIFIER	FLY - OVER	COURSE/TRACK °M (°T)	DISTANCE (NM)	TURN DIRECTION	ALTITUDE	SPEED (kt)	NAV SPEC
001	CF	GD541	-	287 (292.9)	9.48	-	+4500 ft	-220	RNAV 1
002	TF	GD542	-	197 (202.7)	5.96	-	+7000 ft	-	RNAV 1
003	TF	GD543	-	244 (250.4)	11.33	-	-	-	RNAV 1
004	TF	DEXIR	-	248 (254.0)	14.06	-	+FL100	-	RNAV 1

VIZAN 1H

PDG 7% REQUIRED DUE TO OPERATIONAL REASONS UNTIL FL90

SEQUENCE NUMBER	PATH TERMINATOR	WAYPOINT IDENTIFIER	FLY - OVER	COURSE/TRACK °M (°T)	DISTANCE (NM)	TURN DIRECTION	ALTITUDE	SPEED (kt)	NAV SPEC
001	CF	GD511	-	287 (292.9)	7.00	-	+3300 ft	-	RNAV 1
002	TF	VIZAN	-	296 (301.6)	25.51	-	-	-	RNAV 1

WAYPOINT IDENTIFIER	COORDINATES	
	DEXIR	54°13'27.0"N
NIKMI	54°12'04.7"N	019°08'42.3"E
VAPOS	54°47'43.0"N	017°49'36.0"E
IRLUN	53°45'02.1"N	018°36'53.5"E
VIZAN	54°39'00.0"N	017°38'52.0"E
DER 29 (THR 11)	54°22'51.8"N	018°27'07.4"E
GD511	54°25'34.6"N	018°16'05.4"E
GD512	54°20'58.5"N	018°12'47.0"E
GD513	54°18'51.0"N	018°21'26.5"E
GD514	54°20'16.9"N	018°36'05.9"E
GD521	54°35'40.4"N	018°05'22.7"E
GD531	54°07'41.7"N	018°21'46.7"E
GD532	53°50'20.7"N	018°33'22.6"E
GD541	54°26'32.0"N	018°12'10.3"E
GD542	54°21'02.9"N	018°08'14.4"E
GD543	54°17'16.6"N	017°50'00.0"E
GD551	54°16'59.4"N	018°15'29.6"E