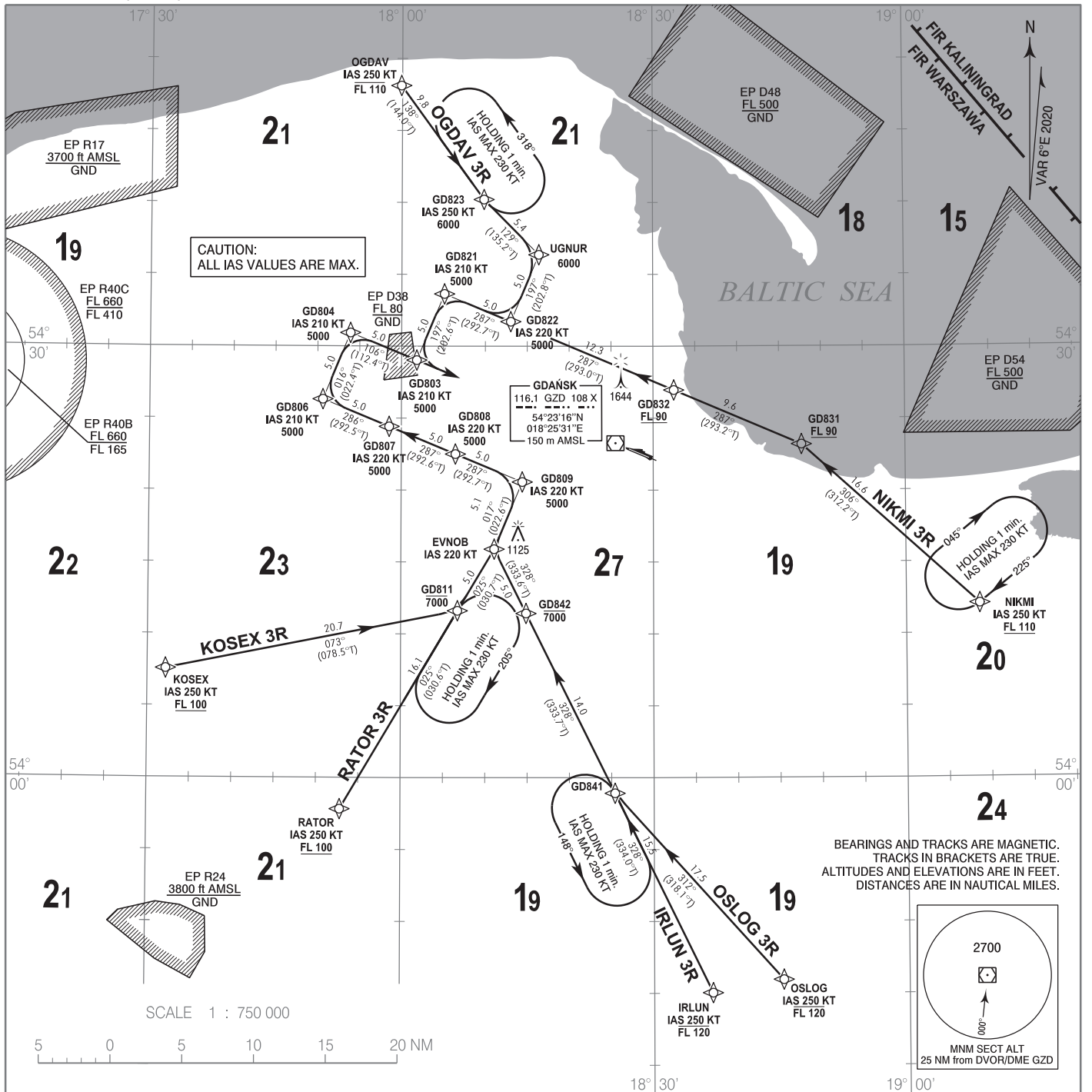


**RNAV 1 (GNSS)
STANDARD ARRIVAL CHART
INSTRUMENT (STAR) - ICAO**

TRANSITION ALTITUDE 6500

Gdańsk DIRECTOR	133.660
Gdańsk APPROACH	127.280
Gdańsk TOWER	118.105
ATIS	129.630

**GDAŃSK Lech Walesa
RWY 11**



Correction: VAR, MAG, BRG changed.

1. RNAV 1 approval required to conduct these procedures without additional restrictions. However it is possible to utilize RNAV 1 trajectories by RNAV 5 only approved a/c. The following restriction apply: a/c equipped with RNAV 5 systems without navigation database, and requiring manual data input are exempted from the utilization of RNAV 1 procedures.
2. All a/c which can not follow and utilize RNAV 1 procedures shall advise ATC upon first contact. Radar vectoring will be provided, usually along published procedures.
3. Holding patterns as directed by ATC, available for non RNAV 1 approved a/c.
4. Vertical planning information: air crews should plan for possible descent clearance in accordance with vertical restrictions specified on chart. Actual descent clearance will be as directed by ATC. If possible, CDA technique should be applied.
5. Expect direct routing/shortcuts by ATC whenever possible (especially during off-peak hours). The turn to final approach is usually performed by radar vectors to expedite traffic handling and for separation reasons.

RADIO COMMUNICATION FAILURE PROCEDURE

RNAV 1 APPROVED AIRCRAFT

- a) If a STAR was assigned and the flight crew acknowledged it, set the transponder to 7600, continue in accordance with the FPL and follow the assigned STAR, then execute an (ILS or VOR) approach and land. The descent shall be performed after 2 minutes from setting 7600, in accordance with the vertical restrictions specified on the chart.
- b) If a STAR was assigned, the flight crew acknowledged it and vectoring was initiated, set the transponder to 7600 and continue for 2 minutes (from setting 7600) on the assigned heading and at the last assigned and acknowledged altitude. Thereafter continue directly to the FAF/FAP, execute an (ILS or VOR) approach and land. The descent shall be carried out in accordance with the vertical restrictions specified on the chart.
- c) If no STAR was assigned, set the transponder to 7600 and continue in accordance with the FPL. Thereafter execute an (ILS or VOR) approach and land. The descent shall be performed in accordance with the vertical restrictions specified on the chart.

RNAV 1 NOT APPROVED AIRCRAFT

Set the transponder to 7600. Maintain the last assigned and acknowledged altitude/flight level. Proceed to DVOR/DME GZD. Over GZD descend to 4000 ft AMSL and then proceed to REP UVRIK (IF) VOR RWY 11 (R 287° MAG / D 10.0 NM DVOR/DME GZD) or REP IPLAM (IF) ILS RWY 29 and VOR RWY 29 (R 107° MAG / D 16.0 NM DVOR/DME GZD). Thereafter execute approach and land on the most convenient RWY depending on the wind direction and other conditions (ILS, VOR RWY 29 or VOR RWY 11).

RNAV 1 (GNSS)
STANDARD ARRIVAL CHART
INSTRUMENT (STAR) - ICAOGDAŃSK Lech Walesa
RWY 11

OGDAV 3R

SEQUENCE NUMBER	PATH TERMINATOR	WAYPOINT IDENTIFIER	COURSE / TRACK °M (°T)	DISTANCE (NM)	ALTITUDE	SPEED (kt)	NAV SPEC
001	IF	OGDAV	-	-	-FL110	-250	RNAV 1
002	TF	GD823	138 (144.0)	9.80	6000 ft	-250	RNAV 1
003	TF	UGNUR	129 (135.2)	5.42	6000 ft	-	RNAV 1
004	TF	GD822	197 (202.8)	5.05	5000 ft	-220	RNAV 1
005	TF	GD821	287 (292.7)	5.00	5000 ft	-210	RNAV 1
006	TF	GD803 (IAF)	197 (202.6)	5.00	5000 ft	-210	RNAV 1

NIKMI 3R

SEQUENCE NUMBER	PATH TERMINATOR	WAYPOINT IDENTIFIER	COURSE / TRACK °M (°T)	DISTANCE (NM)	ALTITUDE	SPEED (kt)	NAV SPEC
001	IF	NIKMI	-	-	+FL110	-250	RNAV 1
002	TF	GD831	306 (312.2)	16.61	+FL90	-	RNAV 1
003	TF	GD832	287 (293.2)	9.64	+FL90	-	RNAV 1
004	TF	GD822	287 (293.0)	12.30	5000 ft	-	RNAV 1
005	TF	GD821	287 (292.7)	5.00	5000 ft	-210	RNAV 1
006	TF	GD803 (IAF)	197 (202.6)	5.00	5000 ft	-210	RNAV 1

OSLOG 3R

SEQUENCE NUMBER	PATH TERMINATOR	WAYPOINT IDENTIFIER	COURSE / TRACK °M (°T)	DISTANCE (NM)	ALTITUDE	SPEED (kt)	NAV SPEC
001	IF	OSLOG	-	-	-FL120	-250	RNAV 1
002	TF	GD841	312 (318.1)	17.51	-	-	RNAV 1
003	TF	GD842	328 (333.7)	13.98	-7000 ft	-	RNAV 1
004	TF	EVNOB	328 (333.6)	5.00	-	-220	RNAV 1
005	TF	GD809	017 (022.6)	5.07	5000 ft	-220	RNAV 1
006	TF	GD808	287 (292.7)	5.05	5000 ft	-220	RNAV 1
007	TF	GD807	287 (292.6)	5.00	5000 ft	-220	RNAV 1
008	TF	GD806	286 (292.5)	5.00	5000 ft	-210	RNAV 1
009	TF	GD804	016 (022.4)	5.00	5000 ft	-210	RNAV 1
010	TF	GD803 (IAF)	106 (112.4)	5.00	5000 ft	-210	RNAV 1

IRLUN 3R

SEQUENCE NUMBER	PATH TERMINATOR	WAYPOINT IDENTIFIER	COURSE / TRACK °M (°T)	DISTANCE (NM)	ALTITUDE	SPEED (kt)	NAV SPEC
001	IF	IRLUN	-	-	-FL120	-250	RNAV 1
002	TF	GD841	328 (334.0)	15.49	-	-	RNAV 1
003	TF	GD842	328 (333.7)	13.98	-7000 ft	-	RNAV 1
004	TF	EVNOB	328 (333.6)	5.00	-	-220	RNAV 1
005	TF	GD809	017 (022.6)	5.07	5000 ft	-220	RNAV 1
006	TF	GD808	287 (292.7)	5.05	5000 ft	-220	RNAV 1
007	TF	GD807	287 (292.6)	5.00	5000 ft	-220	RNAV 1
008	TF	GD806	286 (292.5)	5.00	5000 ft	-210	RNAV 1
009	TF	GD804	016 (022.4)	5.00	5000 ft	-210	RNAV 1
010	TF	GD803 (IAF)	106 (112.4)	5.00	5000 ft	-210	RNAV 1

RATOR 3R

SEQUENCE NUMBER	PATH TERMINATOR	WAYPOINT IDENTIFIER	COURSE / TRACK °M (°T)	DISTANCE (NM)	ALTITUDE	SPEED (kt)	NAV SPEC
001	IF	RATOR	-	-	+FL100	-250	RNAV 1
002	TF	GD811	025 (030.6)	16.06	-7000 ft	-	RNAV 1
003	TF	EVNOB	025 (030.7)	5.00	-	-	RNAV 1
004	TF	GD809	017 (022.6)	5.07	5000 ft	-220	RNAV 1
005	TF	GD808	287 (292.7)	5.05	5000 ft	-220	RNAV 1
006	TF	GD807	287 (292.6)	5.00	5000 ft	-220	RNAV 1
007	TF	GD806	286 (292.5)	5.00	5000 ft	-210	RNAV 1
008	TF	GD804	016 (022.4)	5.00	5000 ft	-210	RNAV 1
009	TF	GD803 (IAF)	106 (112.4)	5.00	5000 ft	-210	RNAV 1

KOSEX 3R

SEQUENCE NUMBER	PATH TERMINATOR	WAYPOINT IDENTIFIER	COURSE / TRACK °M (°T)	DISTANCE (NM)	ALTITUDE	SPEED (kt)	NAV SPEC
001	IF	KOSEX	-	-	+FL100	-250	RNAV 1
002	TF	GD811	073 (078.5)	20.72	-7000 ft	-	RNAV 1
003	TF	EVNOB	025 (030.7)	5.00	-	-	RNAV 1
004	TF	GD809	017 (022.6)	5.07	5000 ft	-220	RNAV 1
005	TF	GD808	287 (292.7)	5.05	5000 ft	-220	RNAV 1
006	TF	GD807	287 (292.6)	5.00	5000 ft	-220	RNAV 1
007	TF	GD806	286 (292.5)	5.00	5000 ft	-210	RNAV 1
008	TF	GD804	016 (022.4)	5.00	5000 ft	-210	RNAV 1
009	TF	GD803 (IAF)	106 (112.4)	5.00	5000 ft	-210	RNAV 1

WAYPOINT IDENTIFIER	COORDINATES	
NIKMI	54°12'04.7"N	019°08'42.3"E
KOSEX	54°07'34.4"N	017°32'10.3"E
RATOR	53°57'49.2"N	017°52'49.6"E
OGDAV	54°48'07.0"N	017°59'53.5"E
OSLOG	53°45'56.9"N	018°45'12.6"E
IRLUN	53°45'02.1"N	018°36'53.5"E
EVNOB	54°15'53.9"N	018°11'04.7"E
UGNUR	54°36'22.2"N	018°16'22.8"E
GD803 (IAF)	54°29'02.0"N	018°01'49.2"E
GD804	54°30'56.2"N	017°53'54.2"E
GD806	54°26'19.2"N	017°50'38.4"E
GD807	54°24'25.2"N	017°58'32.7"E
GD808	54°22'30.6"N	018°06'26.9"E
GD809	54°20'34.3"N	018°14'24.7"E
GD811	54°11'36.6"N	018°06'43.3"E
GD821	54°33'38.4"N	018°05'06.8"E
GD822	54°31'43.2"N	018°13'01.7"E
GD823	54°40'12.5"N	018°09'49.5"E
GD831	54°23'11.0"N	018°47'39.5"E
GD832	54°26'57.2"N	018°32'28.4"E
GD841	53°58'55.4"N	018°25'23.9"E
GD842	54°11'25.8"N	018°14'52.1"E