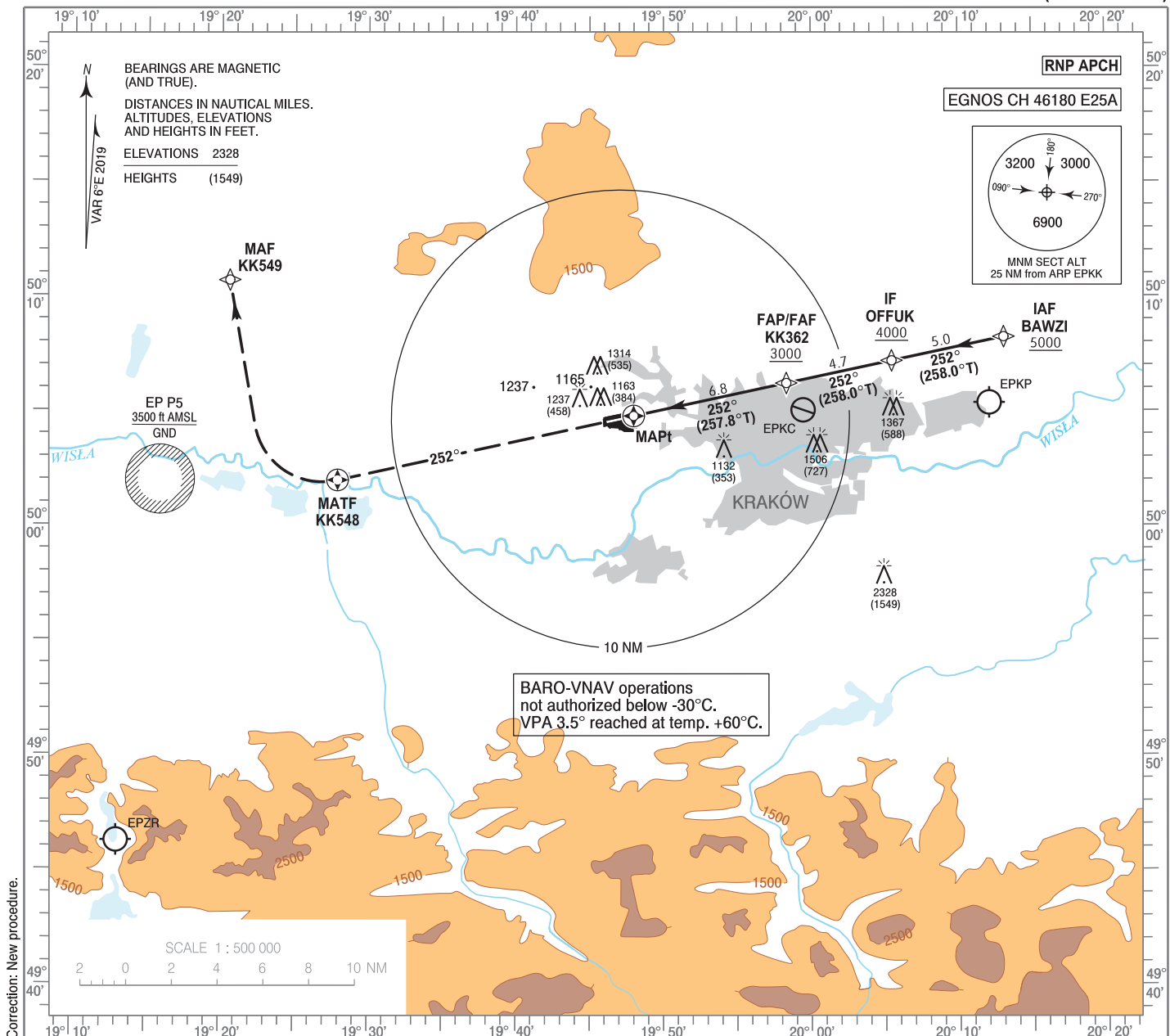


**INSTRUMENT
APPROACH
CHART - ICAO**

AERODROME ELEV 791 ft
THR RWY 25 ELEV 779 ft
HEIGHTS RELATED TO THR RWY 25

Kraków APPROACH 121.075, 135.405
Kraków TOWER 123.255
ATIS 126.130, 112.800

**Kraków - Balice
RNP
RWY 25 (CAT A/B/C/D)**



Correction: New procedure.

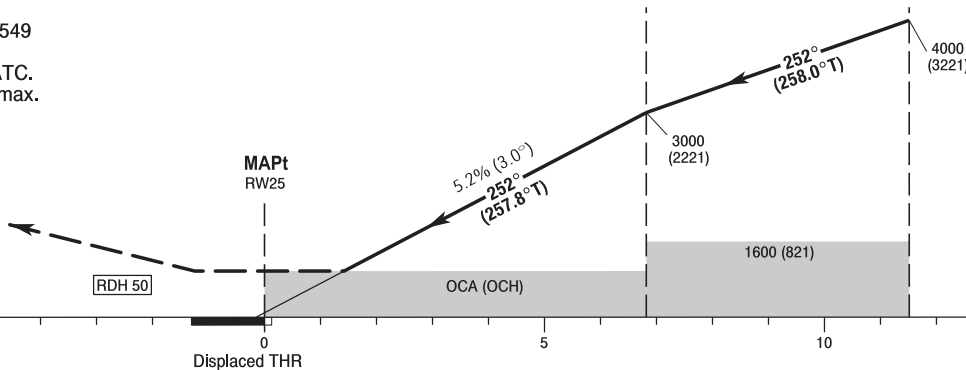
MISSED APPROACH

Climb straight ahead on course 252° to KK548, then turn right direct to KK549 climbing to 4000 (3221). Further instructions from ATC. Turn limited to 220 kt IAS max.

TRANSITION ALTITUDE 6500

FAP/FAF
KK362
6.8 RW25

IF
OFFUK
11.5 RW25



SCALE 1 : 250 000

Displaced THR

NM FROM THR RWY 25

OCA (OCH)					Distance FAF - MAPt 6.8 NM								
Cat. of ACFT		A	B	C	D	Speed	kt	80	100	120	140	160	180
		Straight - in	LNAV	1280 (501)	1280 (501)	1280 (501)	1280 (501)	Time	min : s	5 : 07	4 : 06	3 : 25	2 : 56
LNAV / VNAV	1110 (331)		1120 (341)	1130 (351)	1140 (361)	Rate of descent	ft / min	420	530	630	740	840	950
LPV	980 (201)		992 (213)	1000 (221)	1011 (232)		Final approach distance/altitude (height)						
Circling (OCH AAL)*		1570 (779)	1620 (829)	1740 (949)	1960 (1169)	Distance		6	5	4	3	2	
* ACFT Cat. C and D circling north of aerodrome only.						Altitude (height)		2740 (1961)	2430 (1651)	2110 (1331)	1790 (1011)	1470 (691)	

Kraków - Balice
RNP
RWY 25 (CAT A/B/C/D)

EPKK RNP RWY 25

SEQUENCE NUMBER	PATH TERMINATOR	WAYPOINT IDENTIFIER	FLY - OVER	COURSE/TRACK °M (°T)	DISTANCE (NM)	TURN DIRECTION	ALTITUDE	SPEED (kt)	VPA/TCH	NAV SPEC
001	IF	BAWZI	-	-	-	-	+5000 ft	-	-	RNP APCH
002	TF	OFFUK	-	252 (258.02)	5.00	-	+4000 ft	-	-	RNP APCH
003	TF	KK362	-	252 (257.96)	4.70	-	+3000 ft	-	-	RNP APCH
004	TF	RW25	Y	252 (257.79)	6.83	-	@829 ft	-	-3.0°/50	RNP APCH
005	CF	KK548	Y	252 (257.55)	13.23	-	-	-220	-	RNP APCH
006	DF	KK549	-	-	-	R	+4000 ft	-220	-	RNP APCH

WAYPOINT IDENTIFIER	COORDINATES	
BAWZI (IAF)	50°08'13.7"N	020°13'04.5"E
OFFUK (IF)	50°07'11.8"N	020°05'28.3"E
KK362 (FAP/FAF)	50°06'13.2"N	019°58'19.8"E
RW25 (MAPt)	50°04'47.3"N	019°47'58.8"E
KK548 (MATF)	50°01'58.0"N	019°27'55.6"E
KK549 (MAF)	50°10'40.8"N	019°20'34.8"E