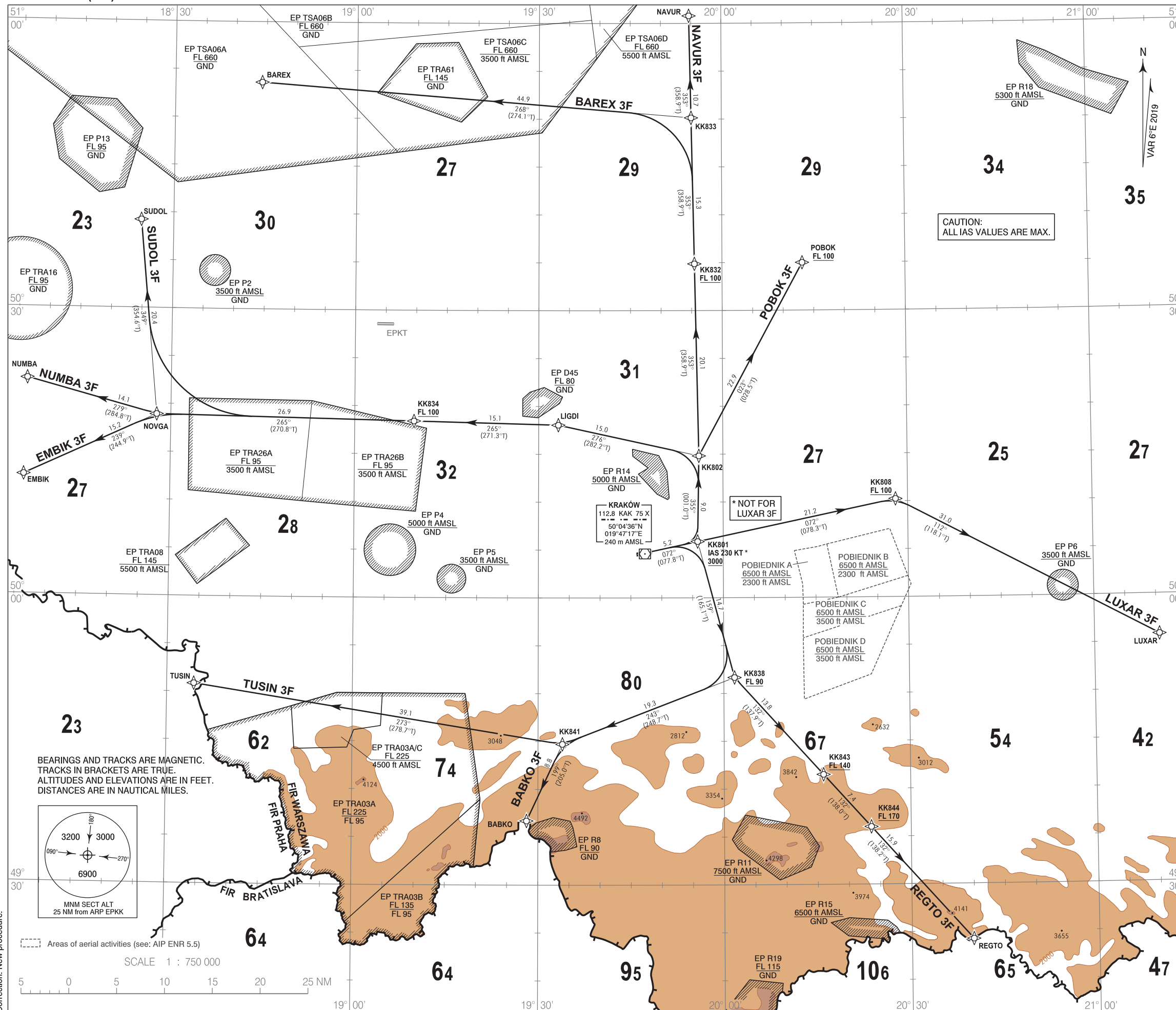


**RNAV 1 (GNSS)  
STANDARD DEPARTURE CHART  
INSTRUMENT (SID) - ICAO**

TRANSITION ALTITUDE 6500

Kraków DIRECTOR	126.530	Kraków GROUND	118.105
Kraków APPROACH	121.075, 135.405	Kraków TOWER	123.255
Kraków DELIVERY	121.980		

**Kraków - Balice  
RWY 07**



1. All aircraft which cannot follow and utilize RNAV 1 procedures shall advise ATC before start up. Radar vectoring will be provided.
2. All aircraft unable to achieve SID profile restrictions shall advise ATC before start up.
3. MAX IAS during initial turn as indicated in route description.
4. Initial SID climb to 6000, unless otherwise cleared by ATC.

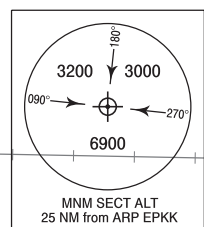
**RADIO COMMUNICATION FAILURE PROCEDURE**

1. Set transponder to 7600.
2. Continue on assigned and acknowledged SID. After 3 minutes climb to FPL flight level.
3. If being vectored, continue on assigned heading. After 3 minutes proceed direct to last SID WPT climbing to FPL flight level.

CAUTION:  
ALL IAS VALUES ARE MAX.

\* NOT FOR  
LUXAR 3F

BEARINGS AND TRACKS ARE MAGNETIC.  
TRACKS IN BRACKETS ARE TRUE.  
ALTITUDES AND ELEVATIONS ARE IN FEET.  
DISTANCES ARE IN NAUTICAL MILES.



Areas of aerial activities (see: AIP ENR 5.5)

SCALE 1 : 750 000



Correction: New procedure.

**RNAV 1 (GNSS)  
STANDARD DEPARTURE CHART  
INSTRUMENT (SID) - ICAO**

**Kraków - Balice  
RWY 07**

**BAREX 3F**

PDG 7% REQUIRED UP TO KK832

SEQUENCE NUMBER	PATH TERMINATOR	WAYPOINT IDENTIFIER	FLY - OVER	COURSE/TRACK °M (°T)	DISTANCE (NM)	TURN DIRECTION	ALTITUDE	SPEED (kt)	NAV SPEC
001	CF	KK801	-	072 (077.8)	5.18	-	+3000 ft	-230	RNAV 1
002	TF	KK802	-	355 (001.0)	8.96	-	-	-	RNAV 1
003	TF	KK832	-	353 (358.9)	20.08	-	+FL100	-	RNAV 1
004	TF	KK833	-	353 (358.9)	15.27	-	-	-	RNAV 1
005	TF	BAREX	-	268 (274.1)	44.93	-	-	-	RNAV 1

**NAVUR 3F**

PDG 7% REQUIRED UP TO KK832

SEQUENCE NUMBER	PATH TERMINATOR	WAYPOINT IDENTIFIER	FLY - OVER	COURSE/TRACK °M (°T)	DISTANCE (NM)	TURN DIRECTION	ALTITUDE	SPEED (kt)	NAV SPEC
001	CF	KK801	-	072 (077.8)	5.18	-	+3000 ft	-230	RNAV 1
002	TF	KK802	-	355 (001.0)	8.96	-	-	-	RNAV 1
003	TF	KK832	-	353 (358.9)	20.08	-	+FL100	-	RNAV 1
004	TF	KK833	-	353 (358.9)	15.27	-	-	-	RNAV 1
005	TF	NAVUR	-	353 (358.9)	10.67	-	-	-	RNAV 1

**POBOK 3F**

PDG 7% REQUIRED UP TO POBOK

SEQUENCE NUMBER	PATH TERMINATOR	WAYPOINT IDENTIFIER	FLY - OVER	COURSE/TRACK °M (°T)	DISTANCE (NM)	TURN DIRECTION	ALTITUDE	SPEED (kt)	NAV SPEC
001	CF	KK801	-	072 (077.8)	5.18	-	+3000 ft	-230	RNAV 1
002	TF	KK802	-	355 (001.0)	8.96	-	-	-	RNAV 1
003	TF	POBOK	-	023 (028.5)	22.94	-	+FL100	-	RNAV 1

**LUXAR 3F**

PDG 7% REQUIRED UP TO KK808

SEQUENCE NUMBER	PATH TERMINATOR	WAYPOINT IDENTIFIER	FLY - OVER	COURSE/TRACK °M (°T)	DISTANCE (NM)	TURN DIRECTION	ALTITUDE	SPEED (kt)	NAV SPEC
001	CF	KK801	-	072 (077.8)	5.18	-	+3000 ft	-	RNAV 1
002	TF	KK808	-	072 (078.3)	21.16	-	+FL100	-	RNAV 1
003	TF	LUXAR	-	112 (118.1)	30.96	-	-	-	RNAV 1

**REGTO 3F**

PDG 7% REQUIRED UP TO KK844

SEQUENCE NUMBER	PATH TERMINATOR	WAYPOINT IDENTIFIER	FLY - OVER	COURSE/TRACK °M (°T)	DISTANCE (NM)	TURN DIRECTION	ALTITUDE	SPEED (kt)	NAV SPEC
001	CF	KK801	-	072 (077.8)	5.18	-	+3000 ft	-230	RNAV 1
002	TF	KK838	-	159 (165.1)	14.73	-	+FL090	-	RNAV 1
003	TF	KK843	-	132 (137.9)	13.75	-	+FL140	-	RNAV 1
004	TF	KK844	-	132 (138.0)	7.39	-	+FL170	-	RNAV 1
005	TF	REGTO	-	132 (138.2)	15.86	-	-	-	RNAV 1

**BABKO 3F**

PDG 7% REQUIRED UP TO KK841

SEQUENCE NUMBER	PATH TERMINATOR	WAYPOINT IDENTIFIER	FLY - OVER	COURSE/TRACK °M (°T)	DISTANCE (NM)	TURN DIRECTION	ALTITUDE	SPEED (kt)	NAV SPEC
001	CF	KK801	-	072 (077.8)	5.18	-	+3000 ft	-230	RNAV 1
002	TF	KK838	-	159 (165.1)	14.73	-	+FL090	-	RNAV 1
003	TF	KK841	-	243 (248.7)	19.31	-	-	-	RNAV 1
004	TF	BABKO	-	199 (205.0)	8.84	-	-	-	RNAV 1

**TUSIN 3F**

PDG 7% REQUIRED UP TO KK841

SEQUENCE NUMBER	PATH TERMINATOR	WAYPOINT IDENTIFIER	FLY - OVER	COURSE/TRACK °M (°T)	DISTANCE (NM)	TURN DIRECTION	ALTITUDE	SPEED (kt)	NAV SPEC
001	CF	KK801	-	072 (077.8)	5.18	-	+3000 ft	-230	RNAV 1
002	TF	KK838	-	159 (165.1)	14.73	-	+FL090	-	RNAV 1
003	TF	KK841	-	243 (248.7)	19.31	-	-	-	RNAV 1
004	TF	TUSIN	-	273 (278.7)	39.08	-	-	-	RNAV 1

**EMBIK 3F**

PDG 7% REQUIRED UP TO LIGDI

SEQUENCE NUMBER	PATH TERMINATOR	WAYPOINT IDENTIFIER	FLY - OVER	COURSE/TRACK °M (°T)	DISTANCE (NM)	TURN DIRECTION	ALTITUDE	SPEED (kt)	NAV SPEC
001	CF	KK801	-	072 (077.8)	5.18	-	+3000 ft	-230	RNAV 1
002	TF	KK802	-	355 (001.0)	8.96	-	-	-	RNAV 1
003	TF	LIGDI	-	276 (282.2)	15.03	-	-	-	RNAV 1
004	TF	KK834	-	265 (271.3)	15.10	-	+FL100	-	RNAV 1
005	TF	NOVGA	-	265 (270.8)	26.91	-	-	-	RNAV 1
006	TF	EMBIK	-	239 (244.9)	15.23	-	-	-	RNAV 1

**NUMBA 3F**

PDG 7% REQUIRED UP TO LIGDI

SEQUENCE NUMBER	PATH TERMINATOR	WAYPOINT IDENTIFIER	FLY - OVER	COURSE/TRACK °M (°T)	DISTANCE (NM)	TURN DIRECTION	ALTITUDE	SPEED (kt)	NAV SPEC
001	CF	KK801	-	072 (077.8)	5.18	-	+3000 ft	-230	RNAV 1
002	TF	KK802	-	355 (001.0)	8.96	-	-	-	RNAV 1
003	TF	LIGDI	-	276 (282.2)	15.03	-	-	-	RNAV 1
004	TF	KK834	-	265 (271.3)	15.10	-	+FL100	-	RNAV 1
005	TF	NOVGA	-	265 (270.8)	26.91	-	-	-	RNAV 1
006	TF	NUMBA	-	279 (284.8)	14.05	-	-	-	RNAV 1

**SUDOL 3F**

PDG 7% REQUIRED UP TO LIGDI

SEQUENCE NUMBER	PATH TERMINATOR	WAYPOINT IDENTIFIER	FLY - OVER	COURSE/TRACK °M (°T)	DISTANCE (NM)	TURN DIRECTION	ALTITUDE	SPEED (kt)	NAV SPEC
001	CF	KK801	-	072 (077.8)	5.18	-	+3000 ft	-230	RNAV 1
002	TF	KK802	-	355 (001.0)	8.96	-	-	-	RNAV 1
003	TF	LIGDI	-	276 (282.2)	15.03	-	-	-	RNAV 1
004	TF	KK834	-	265 (271.3)	15.10	-	+FL100	-	RNAV 1
005	TF	NOVGA	-	265 (270.8)	26.91	-	-	-	RNAV 1
006	TF	SUDOL	-	349 (354.6)	20.41	-	-	-	RNAV 1

WAYPOINT IDENTIFIER	COORDINATES	
DER07 (THR25)	50°04'47.3"N	019°47'58.8"E
BABKO	49°36'42.0"N	019°28'10.0"E
BAREX	50°53'40.0"N	018°44'18.0"E
EMBIK	50°12'29.0"N	018°06'11.0"E
KK801	50°05'52.6"N	019°55'50.9"E
KK802	50°14'49.4"N	019°56'05.6"E
KK808	50°10'13.9"N	020°28'01.9"E
KK832	50°34'52.7"N	019°55'28.6"E
KK833	50°50'07.7"N	019°55'00.1"E
KK834	50°18'25.5"N	019°09'40.3"E
KK838	49°51'39.5"N	020°01'43.8"E
KK841	49°44'42.4"N	019°33'55.7"E
KK843	49°41'29.2"N	020°15'59.4"E
KK844	49°36'00.3"N	020°23'37.0"E
LIGDI	50°18'02.6"N	019°33'12.6"E
LUXAR	49°55'48.0"N	021°10'31.0"E
NAVUR	51°00'47.0"N	019°54'40.0"E
NOVGA	50°18'54.4"N	018°27'42.1"E
NUMBA	50°22'32.0"N	018°06'31.0"E
POBOK	50°34'59.0"N	020°13'08.0"E
REGTO	49°24'13.0"N	020°39'53.0"E
SUDOL	50°39'12.0"N	018°24'42.0"E
TUSIN	49°50'51.0"N	018°34'22.2"E