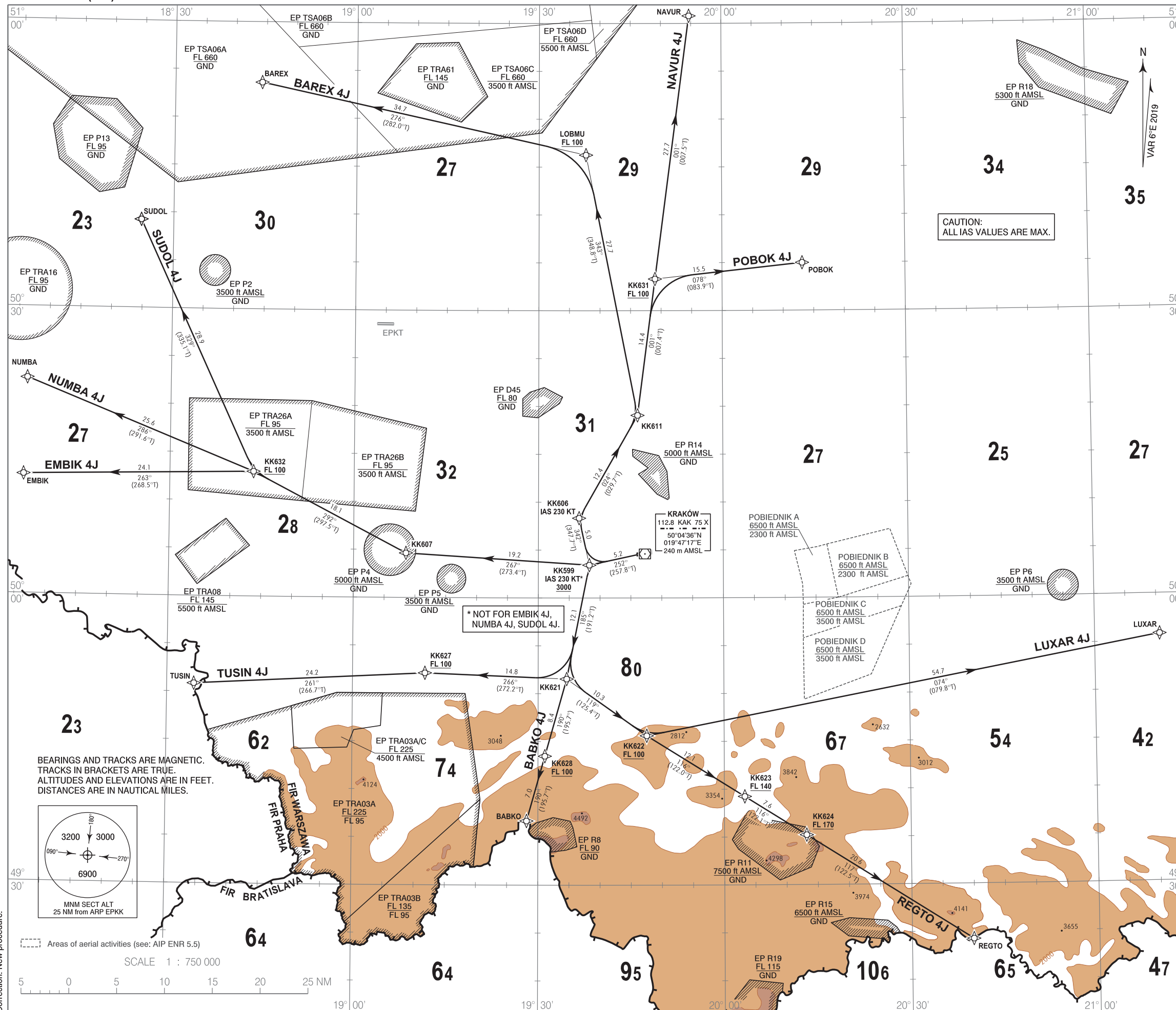


**RNAV 1 (GNSS)  
STANDARD DEPARTURE CHART  
INSTRUMENT (SID) - ICAO**

TRANSITION ALTITUDE 6500

Kraków DIRECTOR	126.530	Kraków GROUND	118.105
Kraków APPROACH	121.075, 135.405	Kraków TOWER	123.255
Kraków DELIVERY	121.980		

**Kraków - Balice  
RWY 25**



1. All aircraft which cannot follow and utilize RNAV 1 procedures shall advise ATC before start up. Radar vectoring will be provided.
2. All aircraft unable to achieve SID profile restrictions shall advise ATC before start up.
3. MAX IAS during initial turn as indicated in route description.
4. Initial SID climb to 6000, unless otherwise cleared by ATC.

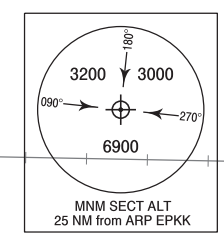
**RADIO COMMUNICATION FAILURE PROCEDURE**

1. Set transponder to 7600.
2. Continue on assigned and acknowledged SID. After 3 minutes climb to FPL flight level.
3. If being vectored, continue on assigned heading. After 3 minutes proceed direct to last SID WPT climbing to FPL flight level.

CAUTION:  
ALL IAS VALUES ARE MAX.

\* NOT FOR EMBIK 4J,  
NUMBA 4J, SUDOL 4J.

BEARINGS AND TRACKS ARE MAGNETIC.  
TRACKS IN BRACKETS ARE TRUE.  
ALTITUDES AND ELEVATIONS ARE IN FEET.  
DISTANCES ARE IN NAUTICAL MILES.



Areas of aerial activities (see: AIP ENR 5.5)

SCALE 1 : 750 000

Correction: New procedure.

**RNAV 1 (GNSS)  
STANDARD DEPARTURE CHART  
INSTRUMENT (SID) - ICAO**

**Kraków - Balice  
RWY 25**

**BAREX 4J**

PDG 7% REQUIRED UP TO KK611

SEQUENCE NUMBER	PATH TERMINATOR	WAYPOINT IDENTIFIER	FLY - OVER	COURSE/TRACK °M (°T)	DISTANCE (NM)	TURN DIRECTION	ALTITUDE	SPEED (kt)	NAV SPEC
001	CF	KK599	-	252 (257.8)	5.16	-	+3000 ft	-230	RNAV 1
002	TF	KK606	-	342 (347.7)	5.02	-	-	-230	RNAV 1
003	TF	KK611	-	024 (029.7)	12.37	-	-	-	RNAV 1
004	TF	LOBMU	-	343 (348.8)	27.73	-	+FL100	-	RNAV 1
005	TF	BAREX	-	276 (282.0)	34.66	-	-	-	RNAV 1

**NAVUR 4J**

PDG 7% REQUIRED UP TO KK611

SEQUENCE NUMBER	PATH TERMINATOR	WAYPOINT IDENTIFIER	FLY - OVER	COURSE/TRACK °M (°T)	DISTANCE (NM)	TURN DIRECTION	ALTITUDE	SPEED (kt)	NAV SPEC
001	CF	KK599	-	252 (257.8)	5.16	-	+3000 ft	-230	RNAV 1
002	TF	KK606	-	342 (347.7)	5.02	-	-	-230	RNAV 1
003	TF	KK611	-	024 (029.7)	12.37	-	-	-	RNAV 1
004	TF	KK631	-	001 (007.4)	14.37	-	+FL100	-	RNAV 1
005	TF	NAVUR	-	001 (007.5)	27.74	-	-	-	RNAV 1

**POBOK 4J**

PDG 7% REQUIRED UP TO KK611

SEQUENCE NUMBER	PATH TERMINATOR	WAYPOINT IDENTIFIER	FLY - OVER	COURSE/TRACK °M (°T)	DISTANCE (NM)	TURN DIRECTION	ALTITUDE	SPEED (kt)	NAV SPEC
001	CF	KK599	-	252 (257.8)	5.16	-	+3000 ft	-230	RNAV 1
002	TF	KK606	-	342 (347.7)	5.02	-	-	-230	RNAV 1
003	TF	KK611	-	024 (029.7)	12.37	-	-	-	RNAV 1
004	TF	KK631	-	001 (007.4)	14.37	-	+FL100	-	RNAV 1
005	TF	POBOK	-	078 (083.9)	15.47	-	-	-	RNAV 1

**LUXAR 4J**

PDG 7% REQUIRED UP TO KK622

SEQUENCE NUMBER	PATH TERMINATOR	WAYPOINT IDENTIFIER	FLY - OVER	COURSE/TRACK °M (°T)	DISTANCE (NM)	TURN DIRECTION	ALTITUDE	SPEED (kt)	NAV SPEC
001	CF	KK599	-	252 (257.8)	5.16	-	+3000 ft	-230	RNAV 1
002	TF	KK621	-	185 (191.2)	12.14	-	-	-	RNAV 1
003	TF	KK622	-	119 (125.4)	10.26	-	+FL100	-	RNAV 1
004	TF	LUXAR	-	074 (079.8)	54.67	-	-	-	RNAV 1

**REGTO 4J**

PDG 7% REQUIRED UP TO KK624

SEQUENCE NUMBER	PATH TERMINATOR	WAYPOINT IDENTIFIER	FLY - OVER	COURSE/TRACK °M (°T)	DISTANCE (NM)	TURN DIRECTION	ALTITUDE	SPEED (kt)	NAV SPEC
001	CF	KK599	-	252 (257.8)	5.16	-	+3000 ft	-230	RNAV 1
002	TF	KK621	-	185 (191.2)	12.14	-	-	-	RNAV 1
003	TF	KK622	-	119 (125.4)	10.26	-	+FL100	-	RNAV 1
004	TF	KK623	-	116 (122.0)	12.05	-	+FL140	-	RNAV 1
005	TF	KK624	-	116 (122.1)	7.61	-	+FL170	-	RNAV 1
006	TF	REGTO	-	117 (122.5)	20.57	-	-	-	RNAV 1

**BABKO 4J**

PDG 7% REQUIRED UP TO KK628

SEQUENCE NUMBER	PATH TERMINATOR	WAYPOINT IDENTIFIER	FLY - OVER	COURSE/TRACK °M (°T)	DISTANCE (NM)	TURN DIRECTION	ALTITUDE	SPEED (kt)	NAV SPEC
001	CF	KK599	-	252 (257.8)	5.16	-	+3000 ft	-230	RNAV 1
002	TF	KK621	-	185 (191.2)	12.14	-	-	-	RNAV 1
003	TF	KK628	-	190 (195.7)	8.38	-	+FL100	-	RNAV 1
004	TF	BABKO	-	190 (195.7)	7.04	-	-	-	RNAV 1

**TUSIN 4J**

PDG 7% REQUIRED UP TO KK627

SEQUENCE NUMBER	PATH TERMINATOR	WAYPOINT IDENTIFIER	FLY - OVER	COURSE/TRACK °M (°T)	DISTANCE (NM)	TURN DIRECTION	ALTITUDE	SPEED (kt)	NAV SPEC
001	CF	KK599	-	252 (257.8)	5.16	-	+3000 ft	-230	RNAV 1
002	TF	KK621	-	185 (191.2)	12.14	-	-	-	RNAV 1
003	TF	KK627	-	266 (272.2)	14.84	-	+FL100	-	RNAV 1
004	TF	TUSIN	-	261 (266.7)	24.19	-	-	-	RNAV 1

**EMBIK 4J**

PDG 7% REQUIRED UP TO KK607

SEQUENCE NUMBER	PATH TERMINATOR	WAYPOINT IDENTIFIER	FLY - OVER	COURSE/TRACK °M (°T)	DISTANCE (NM)	TURN DIRECTION	ALTITUDE	SPEED (kt)	NAV SPEC
001	CF	KK599	-	252 (257.8)	5.16	-	+3000 ft	-	RNAV 1
002	TF	KK607	-	267 (273.4)	19.22	-	-	-	RNAV 1
003	TF	KK632	-	292 (297.5)	18.07	-	+FL100	-	RNAV 1
004	TF	EMBIK	-	263 (268.5)	24.05	-	-	-	RNAV 1

**NUMBA 4J**

PDG 7% REQUIRED UP TO KK607

SEQUENCE NUMBER	PATH TERMINATOR	WAYPOINT IDENTIFIER	FLY - OVER	COURSE/TRACK °M (°T)	DISTANCE (NM)	TURN DIRECTION	ALTITUDE	SPEED (kt)	NAV SPEC
001	CF	KK599	-	252 (257.8)	5.16	-	+3000 ft	-	RNAV 1
002	TF	KK607	-	267 (273.4)	19.22	-	-	-	RNAV 1
003	TF	KK632	-	292 (297.5)	18.07	-	+FL100	-	RNAV 1
004	TF	NUMBA	-	286 (291.6)	25.62	-	-	-	RNAV 1

**SUDOL 4J**

PDG 7% REQUIRED UP TO KK607

SEQUENCE NUMBER	PATH TERMINATOR	WAYPOINT IDENTIFIER	FLY - OVER	COURSE/TRACK °M (°T)	DISTANCE (NM)	TURN DIRECTION	ALTITUDE	SPEED (kt)	NAV SPEC
001	CF	KK599	-	252 (257.8)	5.16	-	+3000 ft	-	RNAV 1
002	TF	KK607	-	267 (273.4)	19.22	-	-	-	RNAV 1
003	TF	KK632	-	292 (297.5)	18.07	-	+FL100	-	RNAV 1
004	TF	SUDOL	-	329 (335.1)	28.86	-	-	-	RNAV 1

WAYPOINT IDENTIFIER	COORDINATES	
DER25 (RWY07)	50°04'31.4"N	019°46'05.1"E
BABKO	49°36'42.0"N	019°28'10.0"E
BAREX	50°53'40.0"N	018°44'18.0"E
EMBIK	50°12'29.0"N	018°06'11.0"E
KK599	50°03'25.7"N	019°38'16.0"E
KK607	50°04'38.5"N	019°08'30.1"E
KK606	50°08'19.8"N	019°36'36.0"E
KK611	50°19'04.3"N	019°46'06.9"E
KK621	49°51'31.8"N	019°34'36.6"E
KK622	49°45'36.0"N	019°47'32.0"E
KK623	49°39'14.2"N	020°03'17.7"E
KK624	49°35'12.0"N	020°13'12.7"E
KK627	49°52'07.7"N	019°11'41.9"E
KK628	49°43'28.1"N	019°31'06.0"E
KK631	50°33'18.6"N	019°49'00.3"E
KK632	50°13'01.1"N	018°43'36.8"E
LOBMU	50°46'15.1"N	019°37'42.4"E
LUXAR	49°55'48.0"N	021°10'31.0"E
NAVUR	51°00'47.0"N	019°54'40.0"E
NUMBA	50°22'32.0"N	018°06'31.0"E
POBOK	50°34'59.0"N	020°13'08.0"E
REGTO	49°24'13.0"N	020°39'53.0"E
SUDOL	50°39'12.0"N	018°24'42.0"E
TUSIN	49°50'51.0"N	018°34'22.2"E