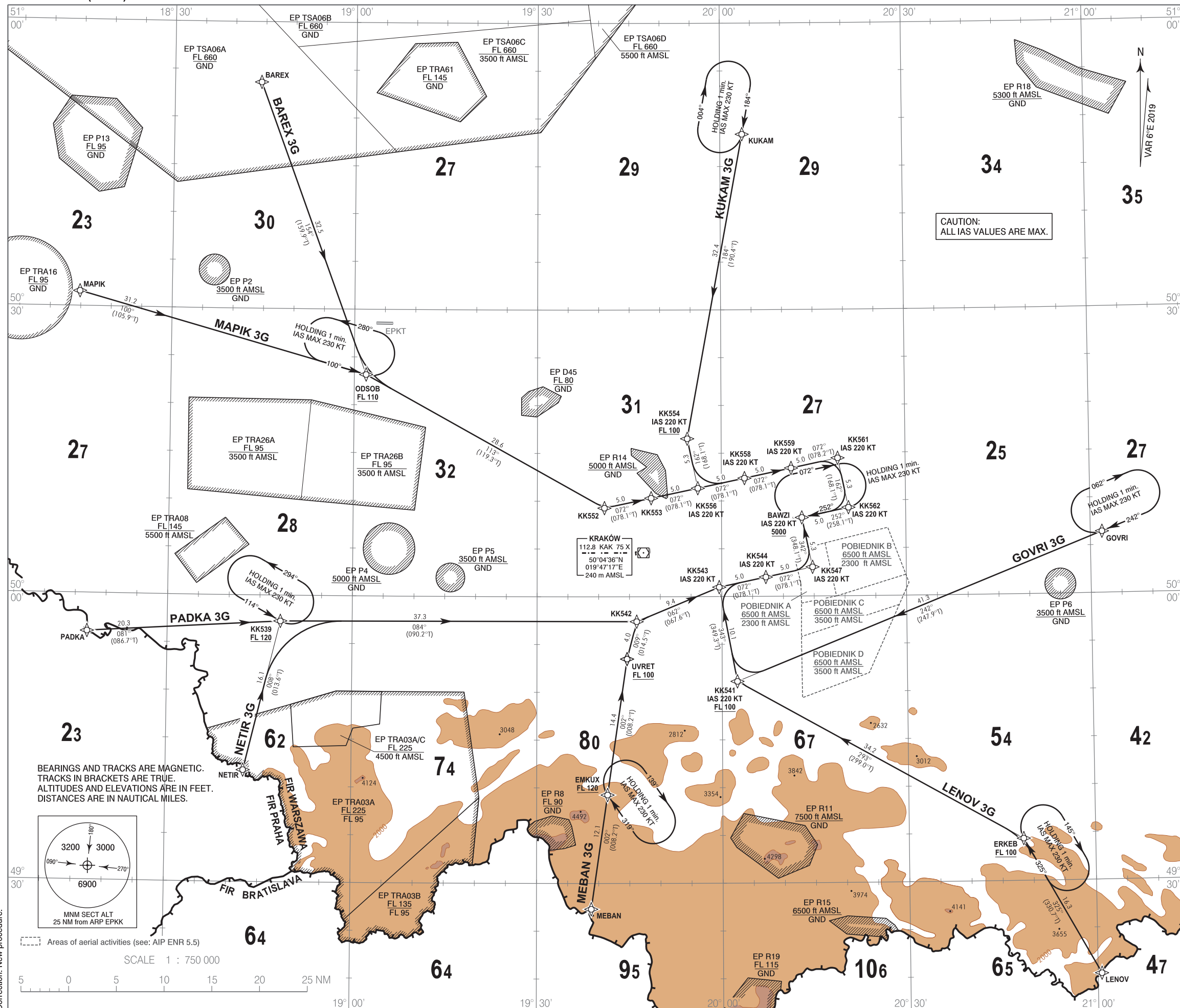


**RNAV 1 (GNSS)
STANDARD ARRIVAL CHART
INSTRUMENT (STAR) - ICAO**

TRANSITION ALTITUDE 6500

Kraków DIRECTOR 126.530
Kraków APPROACH 121.075, 135.405
Kraków GROUND 118.105
Kraków TOWER 123.255

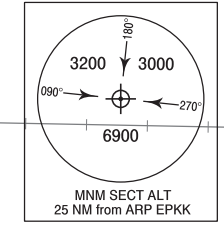
**Kraków - Balice
RWY 25**



1. All aircraft which cannot follow and utilize RNAV 1 procedures shall advise Kraków APP upon first contact. Radar vectoring will be provided.
2. Type of expected approach will be broadcasted by ATIS. Crews willing to perform other approach type shall advise Kraków APP upon first contact.
3. Holding patterns as directed by ATC, available for non RNAV 1 approved aircraft.
4. During peak hours expect radar vectoring at downwind position to expedite traffic handling and for separation reasons.
5. For descent planning expect base turn abeam 10-15 NM final.

- RADIO COMMUNICATION FAILURE PROCEDURE**
1. Set transponder to 7600.
 2. Continue with assigned STAR or on previously assigned heading. Descend to last cleared and acknowledged level.
 3. After 3 minutes proceed direct to KAK DVOR/DME and hold. Descend in holding pattern. Execute VOR approach to preferred runway and land.

CAUTION:
ALL IAS VALUES ARE MAX.



Correction: New procedure.

**RNAV 1 (GNSS)
STANDARD ARRIVAL CHART
INSTRUMENT (STAR) - ICAO**

**Kraków - Balice
RWY 25**

MAPIK 3G

SEQUENCE NUMBER	PATH TERMINATOR	WAYPOINT IDENTIFIER	COURSE / TRACK °M (°T)	DISTANCE (NM)	ALTITUDE	SPEED (kt)	NAV SPEC
001	IF	MAPIK	-	-	-	-	RNAV 1
002	TF	ODSOB	100 (105.9)	31.24	+FL110	-	RNAV 1
003	TF	KK552	113 (119.3)	28.63	-	-	RNAV 1
004	TF	KK553	072 (078.1)	5.00	-	-	RNAV 1
005	TF	KK556	072 (078.1)	5.00	-	-220	RNAV 1
006	TF	KK558	072 (078.1)	5.00	-	-220	RNAV 1
007	TF	KK559	072 (078.1)	5.00	-	-220	RNAV 1
008	TF	KK561	072 (078.2)	5.00	-	-220	RNAV 1
009	TF	KK562	162 (168.1)	5.30	-	-220	RNAV 1
010	TF	BAWZI	252 (258.1)	5.00	+5000 ft	-220	RNAV 1

BAREX 3G

SEQUENCE NUMBER	PATH TERMINATOR	WAYPOINT IDENTIFIER	COURSE / TRACK °M (°T)	DISTANCE (NM)	ALTITUDE	SPEED (kt)	NAV SPEC
001	IF	BAREX	-	-	-	-	RNAV 1
002	TF	ODSOB	154 (159.9)	32.53	+FL110	-	RNAV 1
003	TF	KK552	113 (119.3)	28.63	-	-	RNAV 1
004	TF	KK553	072 (078.1)	5.00	-	-	RNAV 1
005	TF	KK556	072 (078.1)	5.00	-	-220	RNAV 1
006	TF	KK558	072 (078.1)	5.00	-	-220	RNAV 1
007	TF	KK559	072 (078.1)	5.00	-	-220	RNAV 1
008	TF	KK561	072 (078.2)	5.00	-	-220	RNAV 1
009	TF	KK562	162 (168.1)	5.30	-	-220	RNAV 1
010	TF	BAWZI	252 (258.1)	5.00	+5000 ft	-220	RNAV 1

KUKAM 3G

SEQUENCE NUMBER	PATH TERMINATOR	WAYPOINT IDENTIFIER	COURSE / TRACK °M (°T)	DISTANCE (NM)	ALTITUDE	SPEED (kt)	NAV SPEC
001	IF	KUKAM	-	-	-	-	RNAV 1
002	TF	KK554	184 (190.4)	32.41	+ FL100	-220	RNAV 1
003	TF	KK556	162 (168.1)	5.30	-	-220	RNAV 1
004	TF	KK558	072 (078.1)	5.00	-	-220	RNAV 1
005	TF	KK559	072 (078.1)	5.00	-	-220	RNAV 1
006	TF	KK561	072 (078.2)	5.00	-	-220	RNAV 1
007	TF	KK562	162 (168.1)	5.30	-	-220	RNAV 1
008	TF	BAWZI	252 (258.1)	5.00	+5000 ft	-220	RNAV 1

GOVRI 3G

SEQUENCE NUMBER	PATH TERMINATOR	WAYPOINT IDENTIFIER	COURSE / TRACK °M (°T)	DISTANCE (NM)	ALTITUDE	SPEED (kt)	NAV SPEC
001	IF	GOVRI	-	-	-	-	RNAV 1
002	TF	KK541	242 (247.9)	41.30	+FL100	-220	RNAV 1
003	TF	KK543	343 (349.3)	10.05	-	-220	RNAV 1
004	TF	KK544	072 (078.1)	5.00	-	-220	RNAV 1
005	TF	KK547	072 (078.1)	5.00	-	-220	RNAV 1
006	TF	BAWZI	342 (348.1)	5.30	+5000 ft	-220	RNAV 1

LENOV 3G

SEQUENCE NUMBER	PATH TERMINATOR	WAYPOINT IDENTIFIER	COURSE / TRACK °M (°T)	DISTANCE (NM)	ALTITUDE	SPEED (kt)	NAV SPEC
001	IF	LENOV	-	-	-	-	RNAV 1
002	TF	ERKEB	325 (330.7)	16.31	+FL100	-	RNAV 1
003	TF	KK541	293 (299.0)	34.19	+FL100	-220	RNAV 1
004	TF	KK543	343 (349.3)	10.05	-	-220	RNAV 1
005	TF	KK544	072 (078.1)	5.00	-	-220	RNAV 1
006	TF	KK547	072 (078.1)	5.00	-	-220	RNAV 1
007	TF	BAWZI	342 (348.1)	5.30	+5000 ft	-220	RNAV 1

MEBAN 3G

SEQUENCE NUMBER	PATH TERMINATOR	WAYPOINT IDENTIFIER	COURSE / TRACK °M (°T)	DISTANCE (NM)	ALTITUDE	SPEED (kt)	NAV SPEC
001	IF	MEBAN	-	-	-	-	RNAV 1
002	TF	EMKUX	002 (008.2)	12.09	+FL120	-	RNAV 1
003	TF	UVRET	002 (008.2)	14.39	+FL100	-	RNAV 1
004	TF	KK542	009 (014.5)	4.04	-	-	RNAV 1
005	TF	KK543	062 (067.6)	9.37	-	-220	RNAV 1
006	TF	KK544	072 (078.1)	5.00	-	-220	RNAV 1
007	TF	KK547	072 (078.1)	5.00	-	-220	RNAV 1
008	TF	BAWZI	342 (348.1)	5.30	+5000 ft	-220	RNAV 1

PADKA 3G

SEQUENCE NUMBER	PATH TERMINATOR	WAYPOINT IDENTIFIER	COURSE / TRACK °M (°T)	DISTANCE (NM)	ALTITUDE	SPEED (kt)	NAV SPEC
001	IF	PADKA	-	-	-	-	RNAV 1
002	TF	KK539	081 (086.7)	20.29	+FL120	-	RNAV 1
003	TF	KK542	084 (090.2)	37.34	-	-	RNAV 1
004	TF	KK543	062 (067.6)	9.37	-	-220	RNAV 1
005	TF	KK544	072 (078.1)	5.00	-	-220	RNAV 1
006	TF	KK547	072 (078.1)	5.00	-	-220	RNAV 1
007	TF	BAWZI	342 (348.1)	5.30	+5000 ft	-220	RNAV 1

NETIR 3G

SEQUENCE NUMBER	PATH TERMINATOR	WAYPOINT IDENTIFIER	COURSE / TRACK °M (°T)	DISTANCE (NM)	ALTITUDE	SPEED (kt)	NAV SPEC
001	IF	NETIR	-	-	-	-	RNAV 1
002	TF	KK539	008 (013.6)	16.07	+FL120	-	RNAV 1
003	TF	KK542	084 (090.2)	37.34	-	-	RNAV 1
004	TF	KK543	062 (067.6)	9.37	-	-220	RNAV 1
005	TF	KK544	072 (078.1)	5.00	-	-220	RNAV 1
006	TF	KK547	072 (078.1)	5.00	-	-220	RNAV 1
007	TF	BAWZI	342 (348.1)	5.30	+5000 ft	-220	RNAV 1

WAYPOINT IDENTIFIER	COORDINATES	
BAREX	50°53'40.0"N	018°44'18.0"E
BAWZI	50°08'13.7"N	020°13'04.5"E
EMKUX	49°39'15.2"N	019°41'26.0"E
ERKEB	49°34'24.3"N	020°48'25.0"E
GOVRI	50°06'25.3"N	021°01'54.0"E
KK539	49°57'17.4"N	018°48'21.0"E
KK541	49°51'06.9"N	020°02'28.1"E
KK542	49°57'23.6"N	019°46'10.1"E
KK543	50°00'58.8"N	019°59'34.9"E
KK544	50°02'00.9"N	020°07'10.0"E
KK547	50°03'02.8"N	020°14'46.2"E
KK552	50°09'16.5"N	019°40'56.4"E
KK553	50°10'18.5"N	019°48'32.9"E
KK554	50°16'31.4"N	019°54'27.3"E
KK556	50°11'20.5"N	019°56'09.5"E
KK558	50°12'22.6"N	020°03'46.2"E
KK559	50°13'24.5"N	020°11'22.4"E
KK561	50°14'26.1"N	020°18'58.8"E
KK562	50°09'15.3"N	020°20'40.9"E
KUKAM	50°48'22.0"N	020°03'38.0"E
LENOV	49°20'11.0"N	021°00'37.0"E
MAPIK	50°31'34.0"N	018°14'51.0"E
MEBAN	49°27'18.0"N	019°38'48.0"E
NETIR	49°41'40.8"N	018°42'32.4"E
ODSOB	50°23'09.9"N	019°01'55.9"E
PADKA	49°56'02.0"N	018°16'59.8"E
UVRET	49°53'28.9"N	019°44'35.9"E