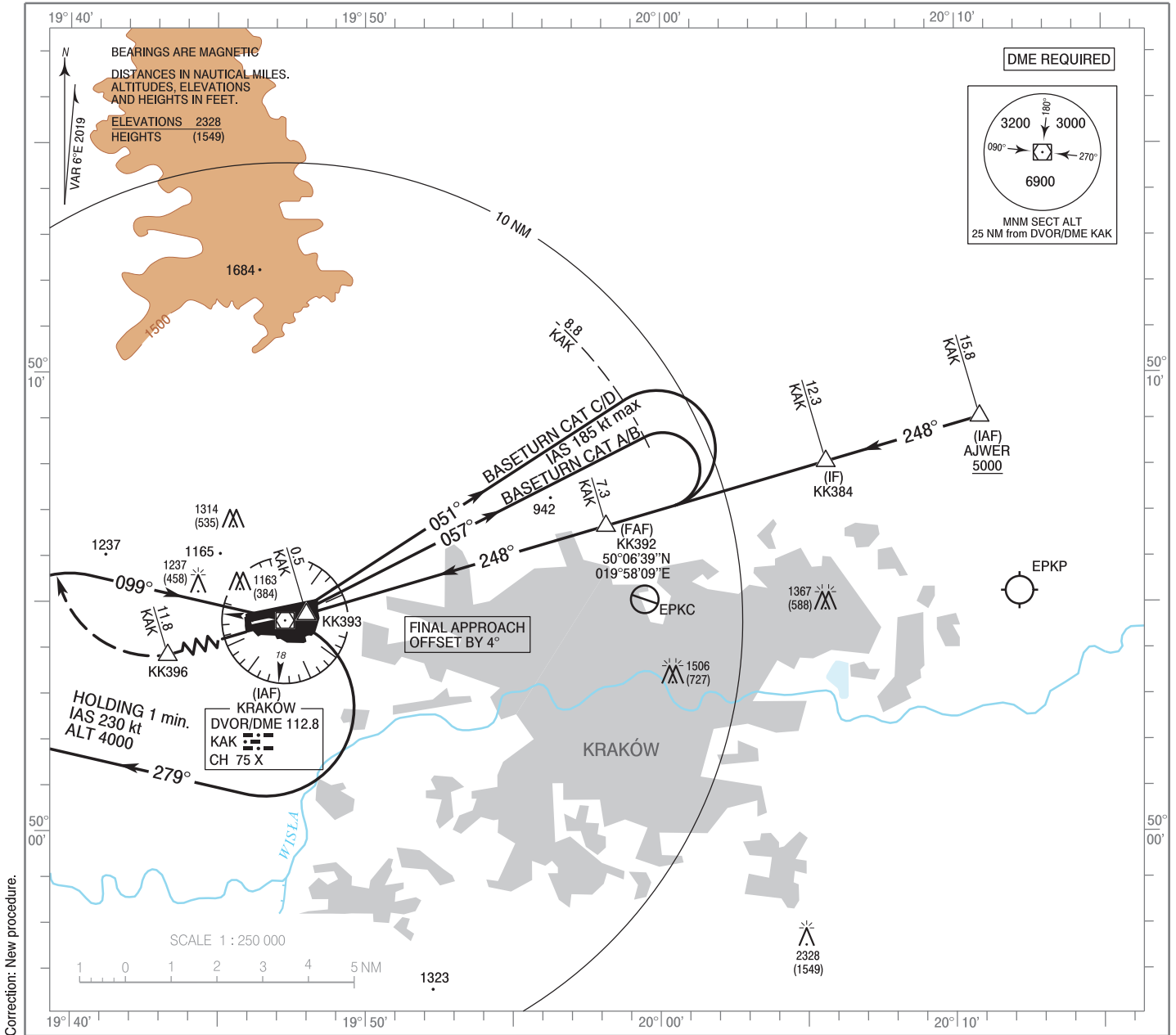


**INSTRUMENT  
APPROACH  
CHART - ICAO**

AERODROME ELEV 791 ft  
THR RWY 25 ELEV 779 ft  
HEIGHTS RELATED TO THR RWY 25

Kraków APPROACH 121.075, 135.405  
Kraków TOWER 123.255  
ATIS 126.130, 112.800

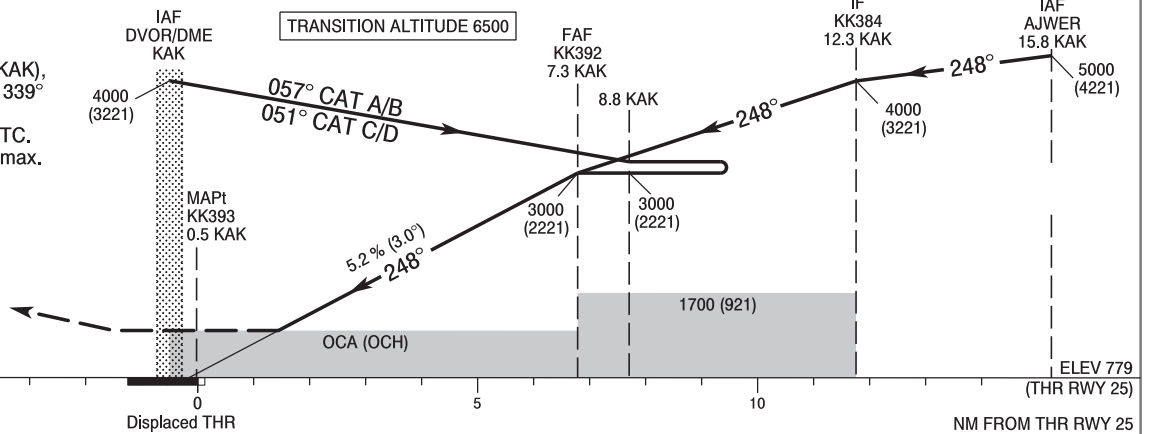
**Kraków - Balice  
VOR  
RWY 25 (CAT A/B/C/D)**



Correction: New procedure.

**MISSED APPROACH**

Climb straight ahead to KK396 (11.8 NM DME KAK), then turn right on heading 339° climbing to 4000 (3221). Further instructions from ATC. Turn limited to 220 kt IAS max.



SCALE 1 : 250 000

Displaced THR

NM FROM THR RWY 25

Cat. of ACFT	OCA (OCH)				Speed	Distance FAF - MAPt 6.8 NM						
	A	B	C	D		kt	80	100	120	140	160	180
Straight - in	1290 (511)	1290 (511)	1290 (511)	1290 (511)	Time	min : s	5 : 07	4 : 06	3 : 25	2 : 56	2 : 34	2 : 17
					Rate of descent	ft / min	420	530	630	740	840	950
Circling (OCH AAL)*	1570 (779)	1620 (829)	1740 (949)	1960 (1169)	Final approach distance/altitude (height)							
					Distance	6	5	4	3	2		
*ACFT Cat C and D circling north of aerodrome only.					Altitude (height)	2590 (1811)	2270 (1491)	1950 (1171)	1640 (861)	1320 (541)		

INSTRUMENT  
APPROACH  
CHART - ICAOKraków - Balice  
VOR  
RWY 25 (CAT A/B/C/D)

FIX / POINT	LATITUDE	LONGITUDE	FIX FORMATION	
IAF DVOR/DME KAK	50°04'35.6"N	019°47'16.8"E		
IAF AJWER	50°09'02.0"N	020°10'50.0"E	073.51° GEO (068° MAG) DVOR KAK	15.80 NM DME KAK
IF KK384	50°08'03.4"N	020°05'36.6"E	073.51° GEO (068° MAG) DVOR KAK	12.30 NM DME KAK
FAF KK392	50°06'39.2"N	019°58'09.2"E	073.52° GEO (068° MAG) DVOR KAK	7.30 NM DME KAK
MAPt KK393	50°04'43.8"N	019°48'00.1"E	073.52° GEO (068° MAG) DVOR KAK	0.48 NM DME KAK
KK396	50°01'13.3"N	019°29'44.3"E	253.50° GEO (248° MAG) DVOR KAK	11.80 NM DME KAK
Final approach descent angle: 3.00°				