

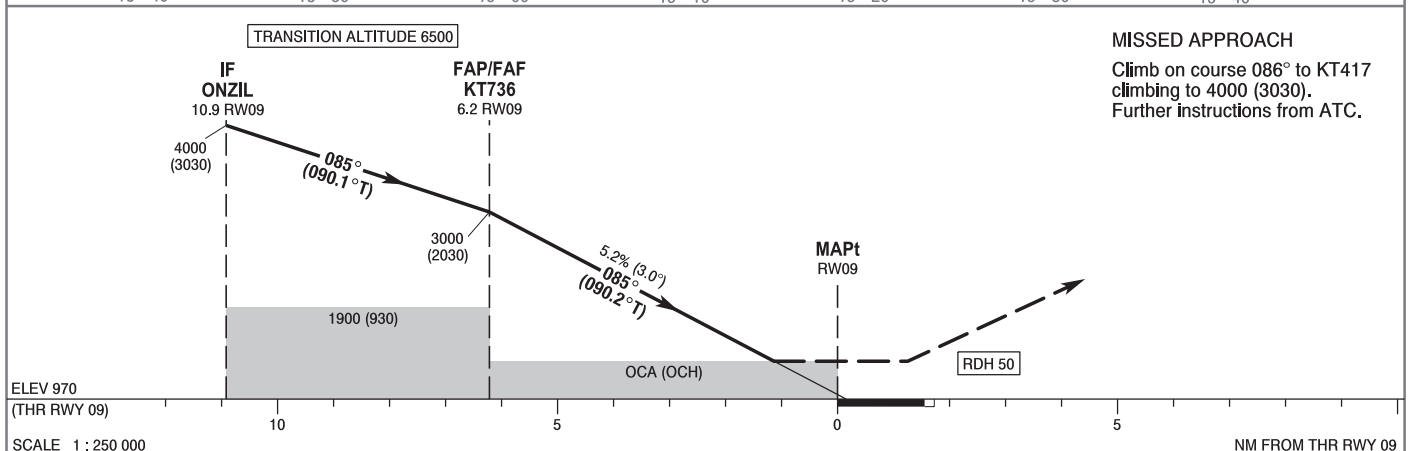
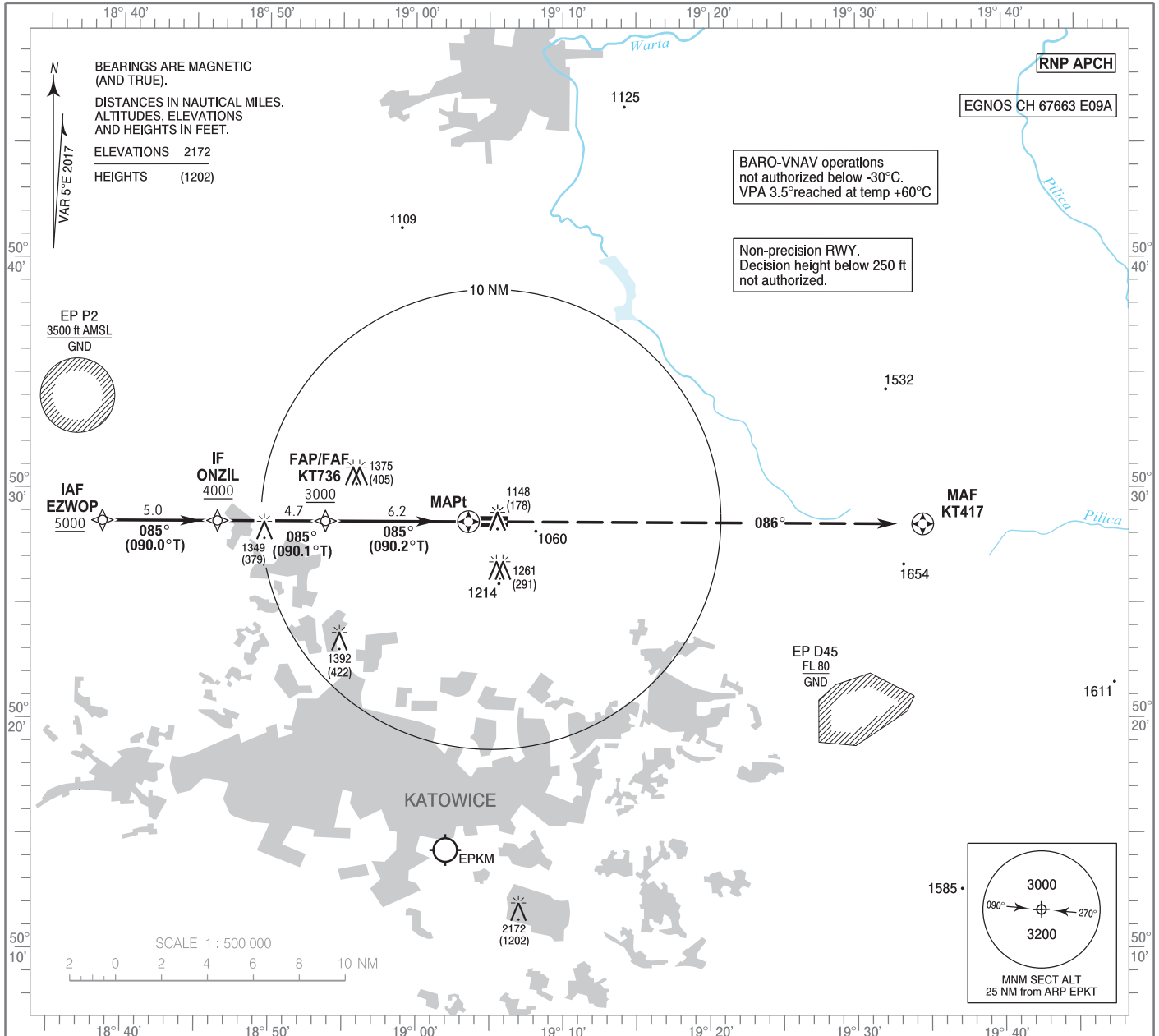
**INSTRUMENT  
APPROACH  
CHART - ICAO**

AERODROME ELEV 1007 ft  
THR RWY 09 ELEV 970 ft  
HEIGHTS RELATED TO THR 09

Kraków APPROACH 121.075, 135.405  
Katowice TOWER 129.255  
ATIS 120.230

**Katowice - Pyrzowice  
RNP  
RWY 09 (CAT A/B/C/D)**

Correction: IAF, IF, bearings changed. Circling OCA/H, LPV OCA/H changed. Reverse table changed. DVOR/DME KAX removed. KT417 changed to fly-over. MSA, MA instruction changed. Obstacles changed.



**MISSED APPROACH**  
Climb on course 086° to KT417 climbing to 4000 (3030).  
Further instructions from ATC.

| OCA (OCH)                                      |            |               |            |            | Distance FAF - MAPt 6.2 NM |   |             |             |             |             |            |        |        |
|--|------------|---------------|------------|------------|----------------------------|---|-------------|-------------|-------------|-------------|------------|--------|--------|
| Cat. of ACFT                                   |            | A             | B          | C          | D                          | Speed                                     | kt          | 80          | 100         | 120         | 140        | 160    | 180    |
|  |            | Straight - in | LNAV       | 1390 (420) | 1390 (420)                 | 1390 (420)                                | 1390 (420)  | Time        | min : s     | 4 : 40      | 3 : 44     | 3 : 07 | 2 : 40 |
| LNAV / VNAV                                    | 1220 (250) |               | 1230 (260) | 1240 (270) | 1250 (280)                 | Rate of descent                           | ft / min    | 420         | 530         | 630         | 740        | 840    | 950    |
| LPV  | 1170 (200) |               | 1182 (212) | 1190 (220) | 1201 (231)                 | Final approach distance/altitude (height) |             |             |             |             |            |        |        |
| Circling (OCH AAL)*                            |            | 1470 (463)    | 1620 (613) | 1820 (813) | 1820 (813)                 | Distance                                  | 6           | 5           | 4           | 3           | 2          |        |        |
| *ACFT cat. D circling north of aerodrome only. |            |               |            |            |                            | Altitude (height)                         | 2940 (1970) | 2620 (1650) | 2300 (1330) | 1980 (1010) | 1660 (690) |        |        |

**Katowice - Pyrzowice**  
**RNP**  
**RWY 09 (CAT A/B/C/D)**

**EPKT RNP RWY 09**

| SEQUENCE NUMBER | PATH TERMINATOR | WAYPOINT IDENTIFIER | FLY - OVER | COURSE/TRACK °M (°T) | DISTANCE (NM) | TURN DIRECTION | ALTITUDE | SPEED (kt) | VPA/TCH  | NAV SPEC |
|-----------------|-----------------|---------------------|------------|----------------------|---------------|----------------|----------|------------|----------|----------|
| 001             | IF              | EZWOP               | -          | -                    | -             | -              | +5000 ft | -          | -        | RNP APCH |
| 002             | TF              | ONZIL               | -          | 085 (089.97)         | 5.00          | -              | +4000 ft | -          | -        | RNP APCH |
| 003             | TF              | KT736               | -          | 085 (090.07)         | 4.70          | -              | +3000 ft | -          | -        | RNP APCH |
| 004             | TF              | RW09                | Y          | 085 (090.18)         | 6.22          | -              | @1020 ft | -          | -3.0°/50 | RNP APCH |
| 005             | CF              | KT417               | Y          | 086 (090.58)         | 19.76         | -              | +4000 ft | -          | -        | RNP APCH |

| WAYPOINT IDENTIFIER | COORDINATES  |               |
|---------------------|--------------|---------------|
| EZWOP (IAF)         | 50°28'34.2"N | 018°38'39.4"E |
| ONZIL (IF)          | 50°28'34.7"N | 018°46'29.0"E |
| KT736 (FAP/FAF)     | 50°28'34.6"N | 018°53'50.4"E |
| RW09 (MAPt)         | 50°28'33.8"N | 019°03'34.5"E |
| KT417 (MAF)         | 50°28'25.9"N | 019°34'30.2"E |