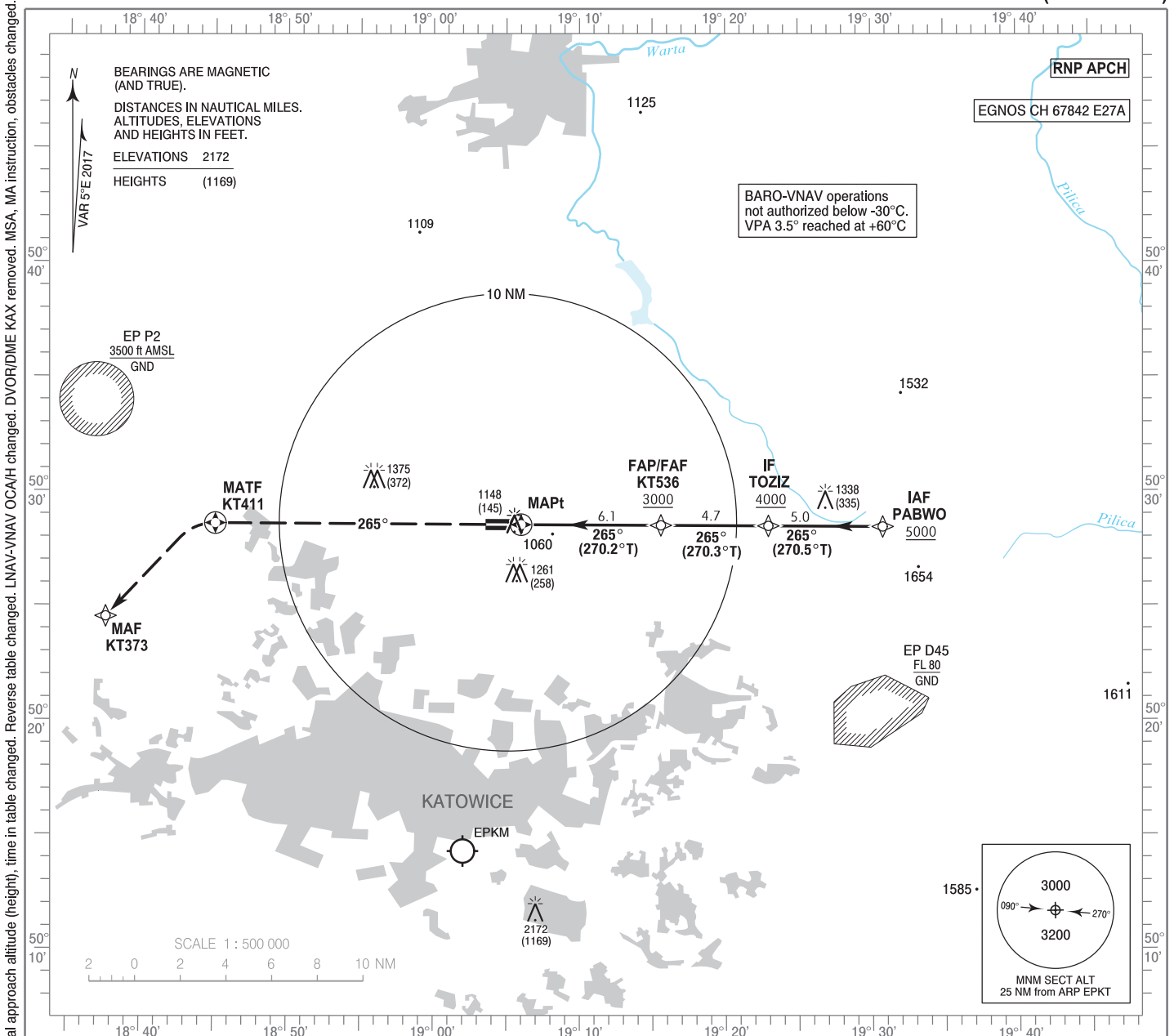


**Katowice - Pyrzowice**  
**RNP**  
**RWY 27 (CAT A/B/C/D)**

**INSTRUMENT**  
**APPROACH**  
**CHART - ICAO**

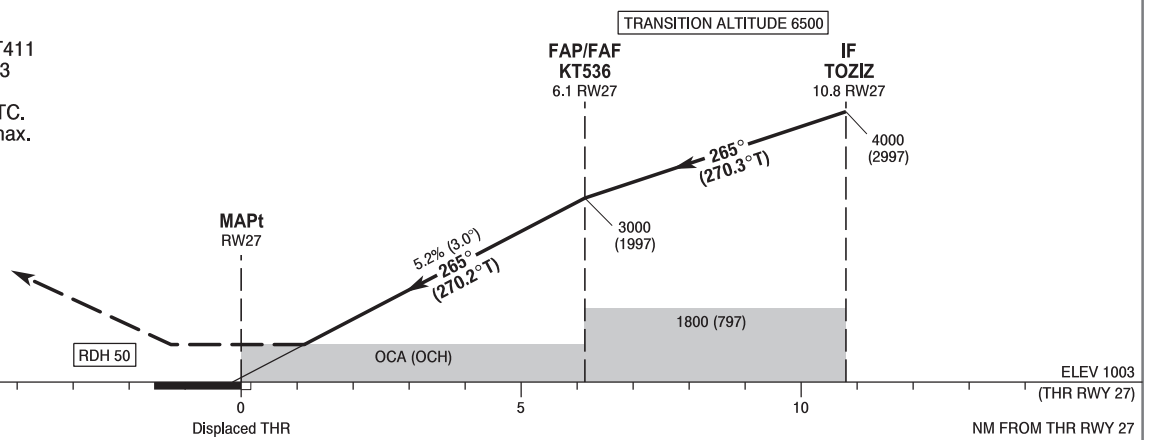
AERODROME ELEV 1007 ft  
THR RWY 27 ELEV 1003 ft  
HEIGHTS RELATED TO THR RWY 27

Kraków APPROACH 121.075, 135.405  
Katowice TOWER 129.255  
ATIS 120.230



**MISSED APPROACH**

Climb on course 265° to KT411 then turn left direct to KT373 climbing to 4000 (2997). Further instructions from ATC. Turn limited to 220 kt IAS max.



Cat. of ACFT	OCA (OCH)				Distance FAF - MAPt 6.1 NM								
	A	B	C	D	Speed	kt	80	100	120	140	160	180	
Straight - in	LNAV	1420 (417)	1420 (417)	1420 (417)	1420 (417)	Time	min : s	4 : 36	3 : 41	3 : 04	2 : 38	2 : 18	2 : 03
	LNAV / VNAV	1280 (277)	1290 (287)	1300 (297)	1310 (307)	Rate of descent	ft / min	420	530	630	740	840	950
	LPV	1197 (194)	1209 (206)	1217 (214)	1228 (225)	Final approach distance/altitude (height)							
Circling (OCH AAL)*	1470 (463)	1620 (613)	1820 (813)	1820 (813)	Distance	6	5	4	3	2			
*ACFT cat. D circling north of aerodrome only.					Altitude (height)	2970 (1967)	2650 (1647)	2330 (1327)	2010 (1007)	1700 (697)			

Correction: IAF, IF, bearings changed. Circling OCA/H, LPV OCA/H changed. Final approach altitude (height), time in table changed. Reverse table changed. LNAV-VNAV OCA/H changed. DVOR/DME KAX removed. MSA, MA instruction, obstacles changed.

**Katowice - Pyrzowice**  
**RNP**  
**RWY 27 (CAT A/B/C/D)**

**EPKT RNP RWY 27**

SEQUENCE NUMBER	PATH TERMINATOR	WAYPOINT IDENTIFIER	FLY - OVER	COURSE/TRACK °M (°T)	DISTANCE (NM)	TURN DIRECTION	ALTITUDE	SPEED (kt)	VPA/TCH	NAV SPEC
001	IF	PABWO	-	-	-	-	+5000 ft	-	-	RNP APCH
002	TF	TOZIZ	-	265 (270.46)	5.00	-	+4000 ft	-	-	RNP APCH
003	TF	KT536	-	265 (270.34)	4.70	-	+3000 ft	-	-	RNP APCH
004	TF	RW27	Y	265 (270.22)	6.11	-	@1053 ft	-	-3.0°/50	RNP APCH
005	CF	KT411	Y	265 (270.07)	13.37	-	-	-220	-	RNP APCH
006	DF	KT373	-	-	-	L	+4000 ft	-220	-	RNP APCH

WAYPOINT IDENTIFIER	COORDINATES	
PABWO (IAF)	50°28'27.2"N	019°30'45.7"E
TOZIZ (IF)	50°28'29.8"N	019°22'56.1"E
KT536 (FAP/FAF)	50°28'31.7"N	019°15'34.7"E
RW27 (MAPt)	50°28'33.5"N	019°06'00.5"E
KT411 (MATF)	50°28'36.3"N	018°45'04.9"E
KT373 (MAF)	50°24'31.2"N	018°37'36.4"E