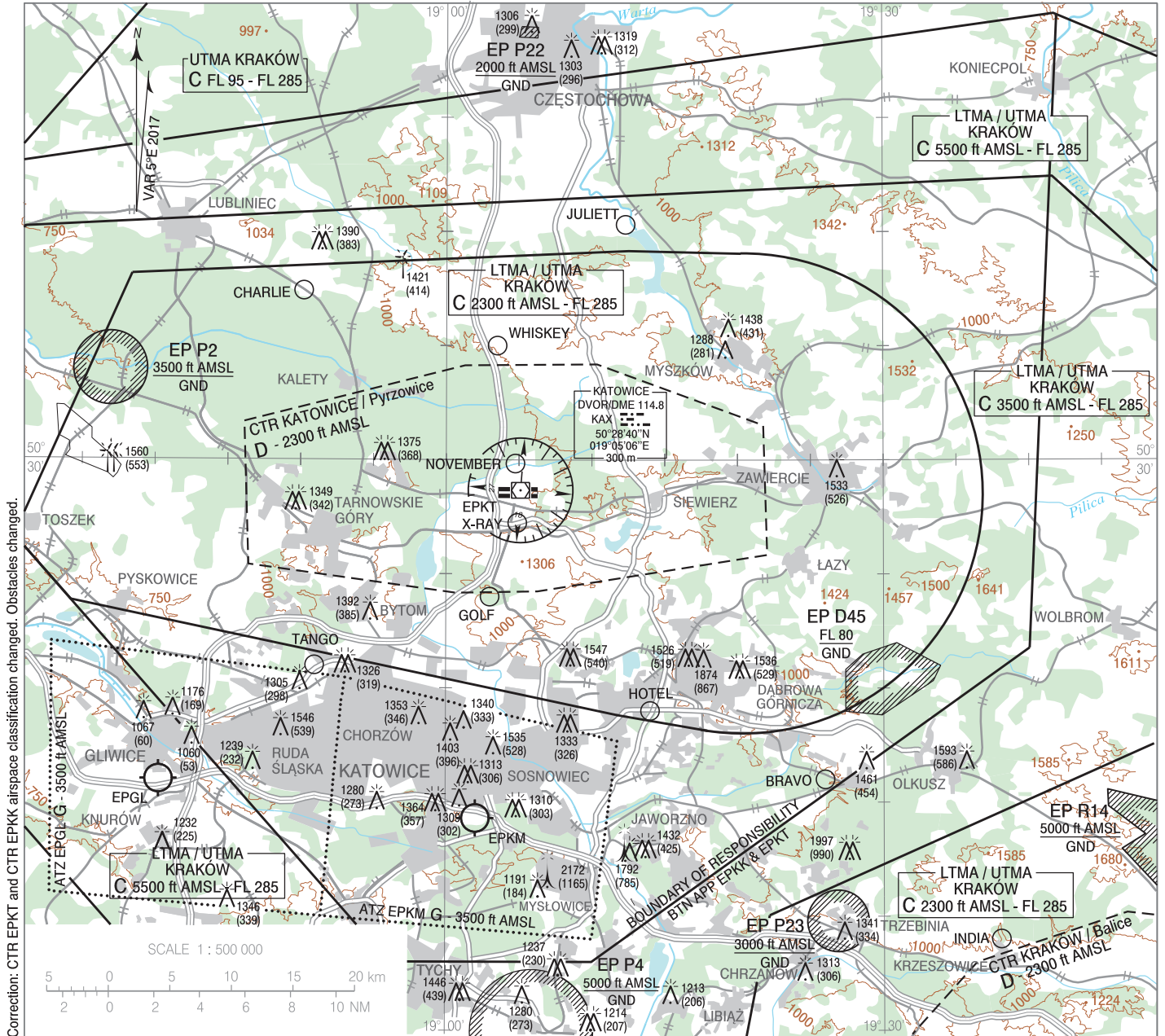


**VISUAL
OPERATION
CHART**

AERODROME ELEV 1007 ft
HEIGHTS RELATED TO AD ELEV

Kraków APPROACH 121.075
135.405
Katowice TOWER 129.255

Katowice - Pyrzowice



Correction: CTR EPKT and CTR EPKK airspace classification changed. Obstacles changed.

RADIO COMMUNICATION MANDATORY POINTS
(see AIP Poland AD 2 EPKK and EPKT)

POINT ID	LATITUDE	LONGITUDE	POINT DESCRIPTION
BRAVO	50°16'00"N	019°26'00"E	Bukowno town
CHARLIE	50°37'25"N	018°50'10"E	Koszęcin town
GOLF	50°24'00"N	019°03'00"E	Rogoźnik town - water reservoir - eastern end
HOTEL	50°19'00"N	019°14'00"E	Strzemieszyce town - junction of S1 and 94 roads
INDIA	50°09'00"N	019°38'00"E	Krzeszowice town - mine, north of the city
JULIETT	50°40'18"N	019°12'18"E	Pora town - artificial lake
NOVEMBER	50°29'50"N	019°04'45"E	Church in Zendek town
TANGO	50°21'00"N	018°51'00"E	Bytom Karb - roads E40 and 94
WHISKEY	50°35'00"N	019°03'30"E	Woźniki town - intersection
X-RAY	50°27'14"N	019°04'53"E	Pyrzowice town - intersection of roads S1 and 913