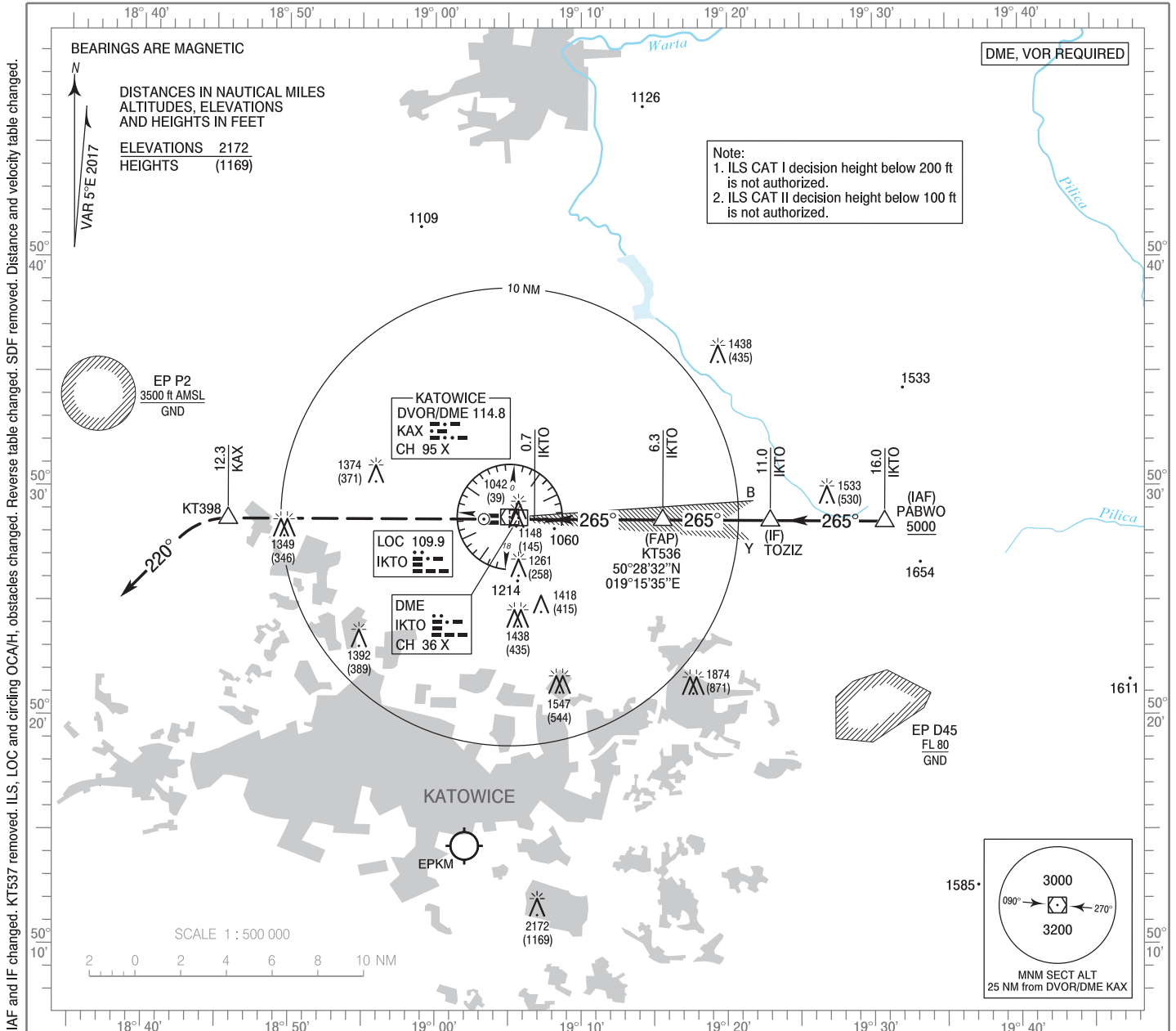


**INSTRUMENT
APPROACH
CHART - ICAO**

AERODROME ELEV 1007 ft
THR RWY 27 ELEV 1003 ft
HEIGHTS RELATED TO THR RWY 27

Kraków APPROACH 121.075, 135.405
Katowice TOWER 129.255
ATIS 120.230

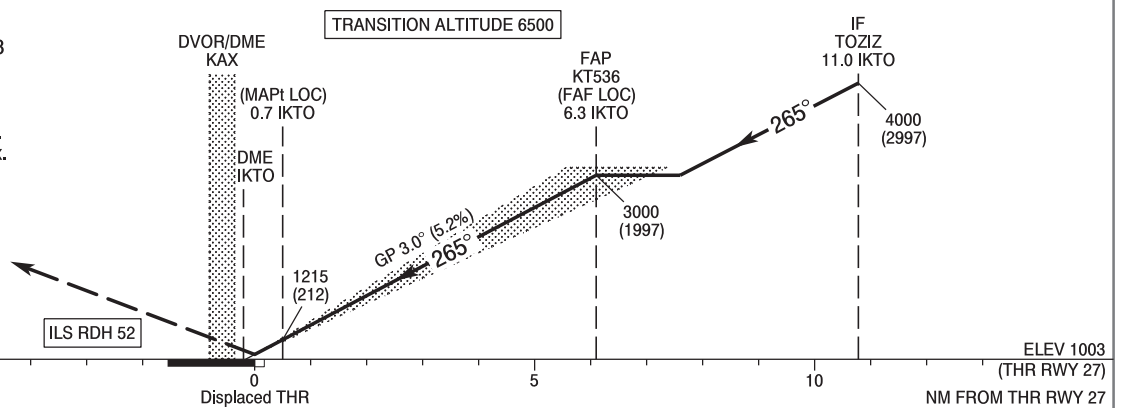
**Katowice - Pyrzowice
ILS CAT II or LOC
RWY 27 (CAT A/B/C/D)**



Correction: IAF and IF changed. KT537 removed. ILS, LOC and circling OCA/H, obstacles changed. Reverse table changed. SDF removed. Distance and velocity table changed.

MISSED APPROACH

Climb straight ahead to KT398
12.3 NM DME KAX,
then turn left on heading 220°
climbing to 4000 (2997).
Further instructions from ATC.
Turn limited to 220 kt IAS max.



SCALE 1 : 250 000

| | | OCA (OCH) | | | | Distance FAF - MAPt 5.6 NM | | | | | | | |
|---------------------|--------------|---------------|------------|------------|------------|---|------------|-------------|-------------|-------------|------------|------------|--------|
| Cat. of ACFT | Cat. of ACFT | A | B | C | D | Speed | kt | 80 | 100 | 120 | 140 | 160 | 180 |
| | | Straight - in | Cat. I | 1197 (194) | 1209 (206) | 1217 (214) | 1228 (225) | Time | min : s | 4 : 12 | 3 : 22 | 2 : 48 | 2 : 24 |
| Cat. II | 1084 (81) | | 1101 (98) | 1113 (110) | 1127 (124) | Rate of descent | ft / min | 420 | 530 | 640 | 740 | 840 | 950 |
| LOC | 1410 (407) | | 1410 (407) | 1410 (407) | 1410 (407) | Final approach distance/altitude (height) | | | | | | | |
| Circling (OCH AAL)* | | 1470 (463) | 1620 (613) | 1820 (813) | 1820 (813) | Distance | | 6 | 5 | 4 | 3 | 2 | |
| | | | | | | Altitude (height) | | 2910 (1907) | 2590 (1587) | 2270 (1267) | 1960 (957) | 1640 (637) | |

*ACFT cat. D circling north of aerodrome only.

INSTRUMENT
APPROACH
CHART - ICAOKatowice - Pyrzowice
ILS CAT II or LOC
RWY 27 (CAT A/B/C/D)

| FIX / POINT | LATITUDE | LONGITUDE | FIX FORMATION | |
|-------------------------------------|--------------|---------------|---------------------------------------|----------------------|
| IAF PABWO | 50°28'27.2"N | 019°30'45.7"E | 270.19° GEO (265° MAG) LOC IKTO | 16.00 NM DME IKTO |
| IF TOZIZ | 50°28'29.8"N | 019°22'56.1"E | 270.18° GEO (265° MAG) LOC IKTO | 11.00 NM DME IKTO |
| FAP KT536 (FAF LOC) | 50°28'31.7"N | 019°15'34.7"E | 270.18° GEO (265° MAG) LOC IKTO | 6.30 NM DME IKTO |
| MAPt (LOC) | 50°28'33.3"N | 019°06'48.2"E | 270.20° GEO (265° MAG) LOC IKTO | 0.70 NM DME IKTO |
| KT398 | 50°28'34.6"N | 018°45'50.4"E | 269.73° GEO (265° MAG) DVOR KAX | 12.31 NM DME KAX |
| Final approach descent angle: 3.00° | | | | |