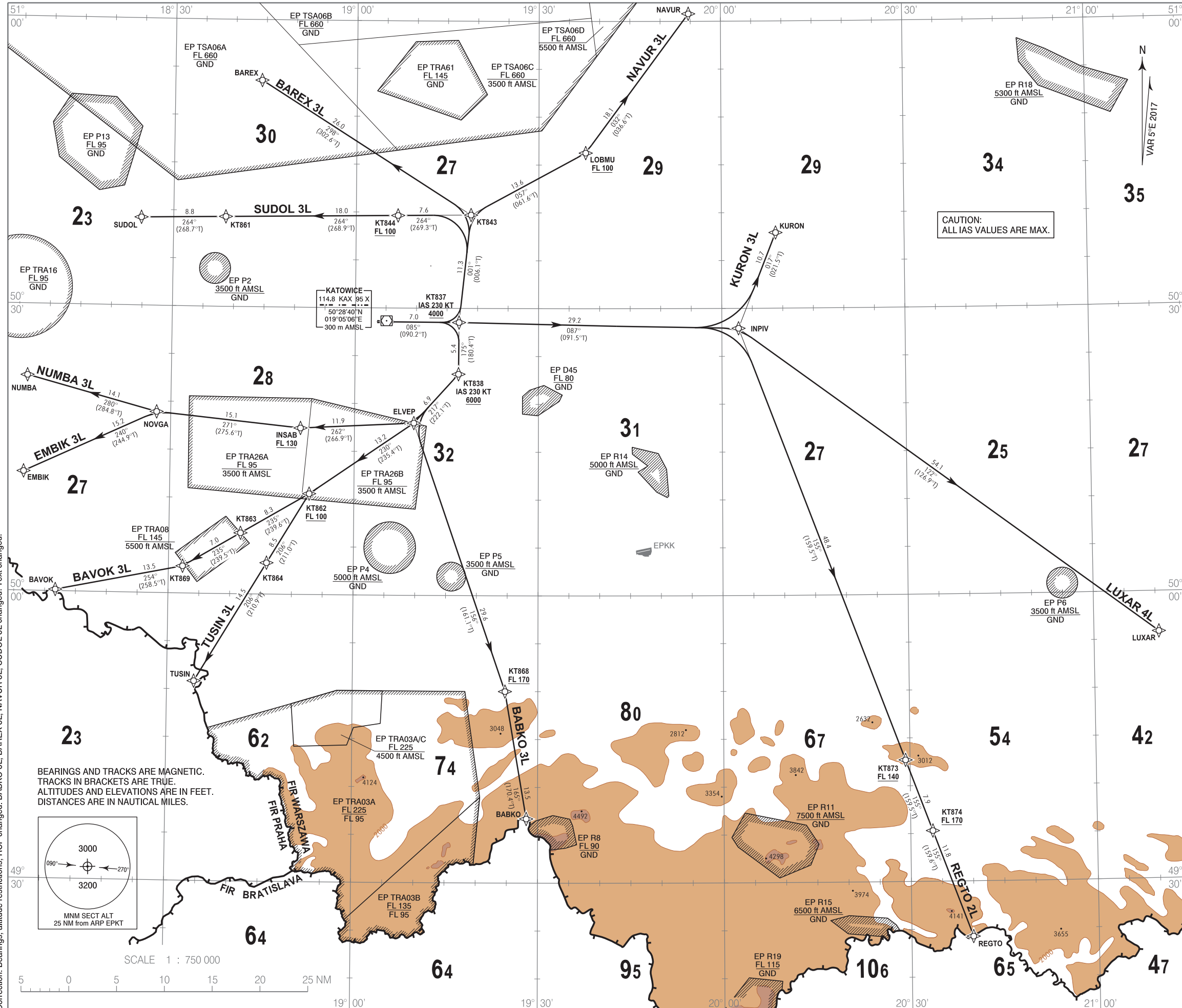


**RNAV 1 (GNSS)
STANDARD DEPARTURE CHART
INSTRUMENT (SID) - ICAO**

TRANSITION ALTITUDE 6500

Kraków APPROACH 121.075, 135.405
Katowice DELIVERY 121.805
Katowice TOWER 129.255

**Katowice - Pyrzowice
RWY 09**



1. All aircraft which cannot follow and utilize RNAV 1 procedures shall advise ATC before start up. Radar vectoring will be provided.
2. All aircraft unable to achieve SID profile restrictions shall advise ATC before start up.
3. MAX IAS during initial turn as indicated in route description.
4. Initial SID climb to 6000, unless otherwise cleared by ATC.

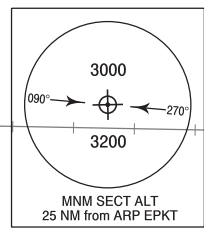
RADIO COMMUNICATION FAILURE PROCEDURE

1. Set transponder to 7600.
2. Continue on assigned and acknowledged SID. After 3 minutes climb to FPL flight level.
3. If being vectored, continue on assigned heading. After 3 minutes proceed direct to last SID WPT climbing to FPL flight level.

CAUTION:
ALL IAS VALUES ARE MAX.

Correction: Bearings, altitude restrictions, RCF changed. BABKO 3L, BAREX 3L, NAVUR 3L, SUDOL 3L changed. Text changed.

BEARINGS AND TRACKS ARE MAGNETIC.
TRACKS IN BRACKETS ARE TRUE.
ALTITUDES AND ELEVATIONS ARE IN FEET.
DISTANCES ARE IN NAUTICAL MILES.



SCALE 1 : 750 000

**RNAV 1 (GNSS)
STANDARD DEPARTURE CHART
INSTRUMENT (SID) - ICAO**

**Katowice - Pyrzowice
RWY 09**

BAREX 3L

PDG 7% REQUIRED UP TO BAREX

SEQUENCE NUMBER	PATH TERMINATOR	WAYPOINT IDENTIFIER	FLY - OVER	COURSE/TRACK °M (°T)	DISTANCE (NM)	TURN DIRECTION	ALTITUDE	SPEED (kt)	NAV SPEC
001	CF	KT837	-	085 (090.2)	7.01	-	+4000 ft	-230	RNAV 1
002	TF	KT843	-	001 (006.1)	11.31	-	-	-	RNAV 1
003	TF	BAREX	-	298 (302.6)	25.99	-	-	-	RNAV 1

NAVUR 3L

PDG 7% REQUIRED UP TO LOBMU

SEQUENCE NUMBER	PATH TERMINATOR	WAYPOINT IDENTIFIER	FLY - OVER	COURSE/TRACK °M (°T)	DISTANCE (NM)	TURN DIRECTION	ALTITUDE	SPEED (kt)	NAV SPEC
001	CF	KT837	-	085 (090.2)	7.01	-	+4000 ft	-230	RNAV 1
002	TF	KT843	-	001 (006.1)	11.31	-	-	-	RNAV 1
003	TF	LOBMU	-	057 (061.6)	13.63	-	+FL100	-	RNAV 1
004	TF	NAVUR	-	032 (036.6)	18.08	-	-	-	RNAV 1

KURON 3L

PDG 7% REQUIRED UP TO INPIV

SEQUENCE NUMBER	PATH TERMINATOR	WAYPOINT IDENTIFIER	FLY - OVER	COURSE/TRACK °M (°T)	DISTANCE (NM)	TURN DIRECTION	ALTITUDE	SPEED (kt)	NAV SPEC
001	CF	KT837	-	085 (090.2)	7.01	-	+4000 ft	-230	RNAV 1
002	TF	INPIV	-	087 (091.5)	29.24	-	-	-	RNAV 1
003	TF	KURON	-	017 (021.5)	10.73	-	-	-	RNAV 1

LUXAR 4L

PDG 7% REQUIRED UP TO INPIV

SEQUENCE NUMBER	PATH TERMINATOR	WAYPOINT IDENTIFIER	FLY - OVER	COURSE/TRACK °M (°T)	DISTANCE (NM)	TURN DIRECTION	ALTITUDE	SPEED (kt)	NAV SPEC
001	CF	KT837	-	085 (090.2)	7.01	-	+4000 ft	-230	RNAV 1
002	TF	INPIV	-	087 (091.5)	29.24	-	-	-	RNAV 1
003	TF	LUXAR	-	122 (126.9)	54.13	-	-	-	RNAV 1

REGTO 2L

PDG 7% REQUIRED UP TO INPIV

SEQUENCE NUMBER	PATH TERMINATOR	WAYPOINT IDENTIFIER	FLY - OVER	COURSE/TRACK °M (°T)	DISTANCE (NM)	TURN DIRECTION	ALTITUDE	SPEED (kt)	NAV SPEC
001	CF	KT837	-	085 (090.2)	7.01	-	+4000 ft	-230	RNAV 1
002	TF	INPIV	-	087 (091.5)	29.24	-	-	-	RNAV 1
003	TF	KT873	-	155 (159.5)	48.38	-	+FL140	-	RNAV 1
004	TF	KT874	-	155 (159.5)	7.92	-	+FL170	-	RNAV 1
005	TF	REGTO	-	155 (159.6)	11.83	-	-	-	RNAV 1

BABKO 3L

PDG 7% REQUIRED UP TO KT868

SEQUENCE NUMBER	PATH TERMINATOR	WAYPOINT IDENTIFIER	FLY - OVER	COURSE/TRACK °M (°T)	DISTANCE (NM)	TURN DIRECTION	ALTITUDE	SPEED (kt)	NAV SPEC
001	CF	KT837	-	085 (090.2)	7.01	-	+4000 ft	-230	RNAV 1
002	TF	KT838	-	175 (180.4)	5.41	-	+6000 ft	-230	RNAV 1
003	TF	ELVEP	-	217 (222.1)	6.92	-	-	-	RNAV 1
004	TF	KT868	-	156 (161.1)	29.64	-	+FL170	-	RNAV 1
005	TF	BABKO	-	165 (170.4)	13.50	-	-	-	RNAV 1

TUSIN 3L

PDG 7% REQUIRED UP TO KT862

SEQUENCE NUMBER	PATH TERMINATOR	WAYPOINT IDENTIFIER	FLY - OVER	COURSE/TRACK °M (°T)	DISTANCE (NM)	TURN DIRECTION	ALTITUDE	SPEED (kt)	NAV SPEC
001	CF	KT837	-	085 (090.2)	7.01	-	+4000 ft	-230	RNAV 1
002	TF	KT838	-	175 (180.4)	5.41	-	+6000 ft	-230	RNAV 1
003	TF	ELVEP	-	217 (222.1)	6.92	-	-	-	RNAV 1
004	TF	KT862	-	230 (235.4)	13.20	-	+FL100	-	RNAV 1
005	TF	KT864	-	206 (211.0)	8.49	-	-	-	RNAV 1
006	TF	TUSIN	-	206 (210.9)	14.49	-	-	-	RNAV 1

BAVOK 3L

PDG 7% REQUIRED UP TO KT862

SEQUENCE NUMBER	PATH TERMINATOR	WAYPOINT IDENTIFIER	FLY - OVER	COURSE/TRACK °M (°T)	DISTANCE (NM)	TURN DIRECTION	ALTITUDE	SPEED (kt)	NAV SPEC
001	CF	KT837	-	085 (090.2)	7.01	-	+4000 ft	-230	RNAV 1
002	TF	KT838	-	175 (180.4)	5.41	-	+6000 ft	-230	RNAV 1
003	TF	ELVEP	-	217 (222.1)	6.92	-	-	-	RNAV 1
004	TF	KT862	-	230 (235.4)	13.20	-	+FL100	-	RNAV 1
005	TF	KT863	-	235 (239.6)	8.27	-	-	-	RNAV 1
006	TF	KT869	-	235 (239.5)	6.97	-	-	-	RNAV 1
007	TF	BAVOK	-	254 (258.5)	13.54	-	-	-	RNAV 1

EMBIK 3L

PDG 7% REQUIRED UP TO INSAB

SEQUENCE NUMBER	PATH TERMINATOR	WAYPOINT IDENTIFIER	FLY - OVER	COURSE/TRACK °M (°T)	DISTANCE (NM)	TURN DIRECTION	ALTITUDE	SPEED (kt)	NAV SPEC
001	CF	KT837	-	085 (090.2)	7.01	-	+4000 ft	-230	RNAV 1
002	TF	KT838	-	175 (180.4)	5.41	-	+6000 ft	-230	RNAV 1
003	TF	ELVEP	-	217 (222.1)	6.92	-	-	-	RNAV 1
004	TF	INSAB	-	262 (266.9)	11.86	-	+FL130	-	RNAV 1
005	TF	NOVGA	-	271 (275.6)	15.14	-	-	-	RNAV 1
006	TF	EMBIK	-	240 (244.9)	15.23	-	-	-	RNAV 1

NUMBA 3L

PDG 7% REQUIRED UP TO INSAB

SEQUENCE NUMBER	PATH TERMINATOR	WAYPOINT IDENTIFIER	FLY - OVER	COURSE/TRACK °M (°T)	DISTANCE (NM)	TURN DIRECTION	ALTITUDE	SPEED (kt)	NAV SPEC
001	CF	KT837	-	085 (090.2)	7.01	-	+4000 ft	-230	RNAV 1
002	TF	KT838	-	175 (180.4)	5.41	-	+6000 ft	-230	RNAV 1
003	TF	ELVEP	-	217 (222.1)	6.92	-	-	-	RNAV 1
004	TF	INSAB	-	262 (266.9)	11.86	-	+FL130	-	RNAV 1
005	TF	NOVGA	-	271 (275.6)	15.14	-	-	-	RNAV 1
006	TF	NUMBA	-	280 (284.8)	14.05	-	-	-	RNAV 1

SUDOL 3L

PDG 7% REQUIRED UP TO KT844

SEQUENCE NUMBER	PATH TERMINATOR	WAYPOINT IDENTIFIER	FLY - OVER	COURSE/TRACK °M (°T)	DISTANCE (NM)	TURN DIRECTION	ALTITUDE	SPEED (kt)	NAV SPEC
001	CF	KT837	-	085 (090.2)	7.01	-	+4000 ft	-230	RNAV 1
002	TF	KT843	-	001 (006.1)	11.31	-	-	-	RNAV 1
003	TF	KT844	-	264 (269.3)	7.63	-	+FL100	-	RNAV 1
004	TF	KT861	-	264 (268.9)	18.02	-	-	-	RNAV 1
005	TF	SUDOL	-	264 (268.7)	8.83	-	-	-	RNAV 1

WAYPOINT IDENTIFIER	COORDINATES	
DER09 (THR27)	50°28'33.5"N	019°06'00.5"E
BABKO	49°36'42.0"N	019°28'10.0"E
BAREX	50°53'40.0"N	018°44'18.0"E
BAVOK	50°00'10.0"N	018°11'43.0"E
ELVEP	50°17'59.5"N	019°09'40.6"E
EMBIK	50°12'29.0"N	018°06'11.0"E
INPIV	50°27'55.1"N	020°02'44.1"E
INSAB	50°17'22.8"N	018°51'12.0"E
KT837	50°28'31.4"N	019°16'58.7"E
KT838	50°23'07.3"N	019°16'55.6"E
KT843	50°39'45.3"N	019°18'52.1"E
KT844	50°39'40.1"N	019°06'52.8"E
KT861	50°39'22.9"N	018°38'34.3"E
KT862	50°10'31.6"N	018°52'43.3"E
KT863	50°06'21.5"N	018°41'37.9"E
KT864	50°03'15.9"N	018°45'54.8"E
KT868	49°49'59.9"N	019°24'41.2"E
KT869	50°02'49.7"N	018°32'18.1"E
KT873	49°42'42.1"N	020°29'17.0"E
KT874	49°35'17.4"N	020°33'33.0"E
KURON	50°37'54.0"N	020°08'53.0"E
LOBMU	50°46'15.1"N	019°37'42.4"E
LUXAR	49°55'48.0"N	021°10'31.0"E
NAVUR	51°00'47.0"N	019°54'40.0"E
NOVGA	50°18'54.4"N	018°27'42.1"E
NUMBA	50°22'32.0"N	018°06'31.0"E
REGTO	49°24'13.0"N	020°39'53.0"E
SUDOL	50°39'12.0"N	018°24'42.0"E
TUSIN	49°50'51.0"N	018°34'22.2"E