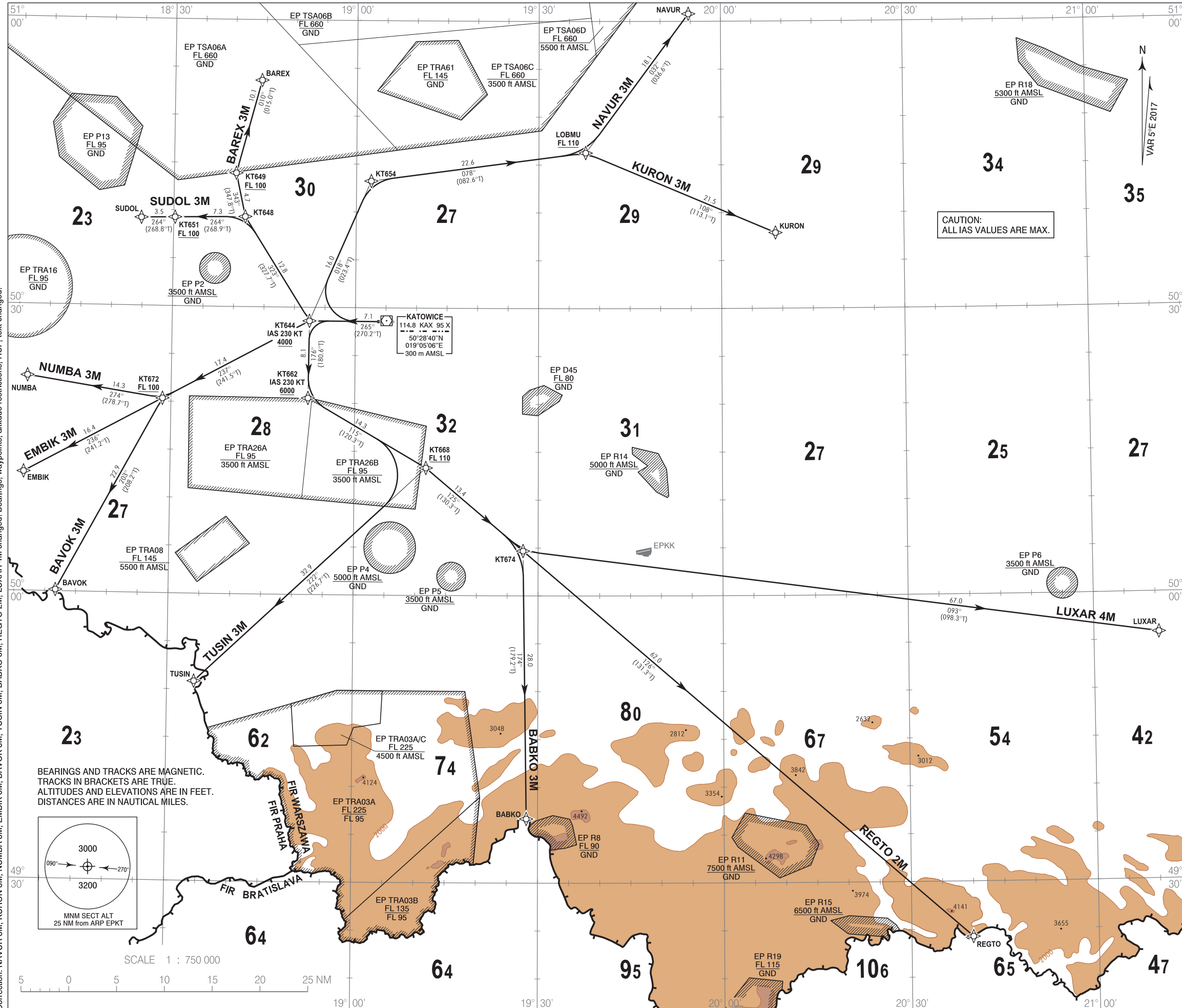


**RNAV 1 (GNSS)  
STANDARD DEPARTURE CHART  
INSTRUMENT (SID) - ICAO**

TRANSITION ALTITUDE 6500

Kraków APPROACH 121.075, 135.405  
Katowice DELIVERY 121.805  
Katowice TOWER 129.255

**Katowice - Pyrzowice  
RWY 27**



1. All aircraft which cannot follow and utilize RNAV 1 procedures shall advise ATC before start up. Radar vectoring will be provided.
2. All aircraft unable to achieve SID profile restrictions shall advise ATC before start up.
3. MAX IAS during initial turn as indicated in route description.
4. Initial SID climb to 6000 unless otherwise cleared by ATC.

**RADIO COMMUNICATION FAILURE PROCEDURE**

1. Set transponder to 7600.
2. Continue on assigned and acknowledged SID. After 3 minutes climb to FPL flight level.
3. If being vectored, continue on assigned heading. After 3 minutes proceed direct to last SID WPT climbing to FPL flight level.

CAUTION:  
ALL IAS VALUES ARE MAX.

Correction: NAVUR 3M, KURON 3M, EMBIK 3M, NUMBA 3M, BAVOK 3M, TUSIN 3M, BABKO 3M, REGTO 2M, LUXAR 4M changed. LUXAR 4M changed. Bearings, waypoints, altitude restrictions, RCF, text changed.

**RNAV 1 (GNSS)  
STANDARD DEPARTURE CHART  
INSTRUMENT (SID) - ICAO**

**Katowice - Pyrzowice  
RWY 27**

**BAREX 3M**

PDG 7% REQUIRED UP TO KT648

SEQUENCE NUMBER	PATH TERMINATOR	WAYPOINT IDENTIFIER	FLY - OVER	COURSE/TRACK °M (°T)	DISTANCE (NM)	TURN DIRECTION	ALTITUDE	SPEED (kt)	NAV SPEC
001	CF	KT644	-	265 (270.2)	7.09	-	+4000 ft	-230	RNAV 1
002	TF	KT648	-	323 (327.7)	12.81	-	-	-	RNAV 1
003	TF	KT649	-	343 (347.8)	4.66	-	+FL100	-	RNAV 1
004	TF	BAREX	-	010 (015.0)	10.07	-	-	-	RNAV 1

**NAVUR 3M**

PDG 7% REQUIRED UP TO KT654

SEQUENCE NUMBER	PATH TERMINATOR	WAYPOINT IDENTIFIER	FLY - OVER	COURSE/TRACK °M (°T)	DISTANCE (NM)	TURN DIRECTION	ALTITUDE	SPEED (kt)	NAV SPEC
001	CF	KT644	-	265 (270.2)	7.09	-	+4000 ft	-230	RNAV 1
002	TF	KT654	-	018 (023.4)	15.99	-	-	-	RNAV 1
003	TF	LOBMU	-	078 (082.6)	22.61	-	+FL110	-	RNAV 1
004	TF	NAVUR	-	032 (036.6)	18.08	-	-	-	RNAV 1

**KURON 3M**

PDG 7% REQUIRED UP TO KT654

SEQUENCE NUMBER	PATH TERMINATOR	WAYPOINT IDENTIFIER	FLY - OVER	COURSE/TRACK °M (°T)	DISTANCE (NM)	TURN DIRECTION	ALTITUDE	SPEED (kt)	NAV SPEC
001	CF	KT644	-	265 (270.2)	7.09	-	+4000 ft	-230	RNAV 1
002	TF	KT654	-	018 (023.4)	15.99	-	-	-	RNAV 1
003	TF	LOBMU	-	078 (082.6)	22.61	-	+FL110	-	RNAV 1
004	TF	KURON	-	108 (113.1)	21.51	-	-	-	RNAV 1

**LUXAR 4M**

PDG 7% REQUIRED UP TO KT668

SEQUENCE NUMBER	PATH TERMINATOR	WAYPOINT IDENTIFIER	FLY - OVER	COURSE/TRACK °M (°T)	DISTANCE (NM)	TURN DIRECTION	ALTITUDE	SPEED (kt)	NAV SPEC
001	CF	KT644	-	265 (270.2)	7.09	-	+4000 ft	-230	RNAV 1
002	TF	KT662	-	176 (180.6)	8.07	-	+6000 ft	-230	RNAV 1
004	TF	KT668	-	115 (120.3)	14.34	-	+FL110	-	RNAV 1
005	TF	KT674	-	125 (130.3)	13.37	-	-	-	RNAV 1
006	TF	LUXAR	-	093 (098.3)	67.02	-	-	-	RNAV 1

**REGTO 2M**

PDG 7% REQUIRED UP TO KT668

SEQUENCE NUMBER	PATH TERMINATOR	WAYPOINT IDENTIFIER	FLY - OVER	COURSE/TRACK °M (°T)	DISTANCE (NM)	TURN DIRECTION	ALTITUDE	SPEED (kt)	NAV SPEC
001	CF	KT644	-	265 (270.2)	7.09	-	+4000 ft	-230	RNAV 1
002	TF	KT662	-	176 (180.6)	8.07	-	+6000 ft	-230	RNAV 1
003	TF	KT668	-	115 (120.3)	14.34	-	+FL110	-	RNAV 1
004	TF	KT674	-	125 (130.3)	13.37	-	-	-	RNAV 1
005	TF	REGTO	-	126 (131.3)	61.98	-	-	-	RNAV 1

**BABKO 3M**

PDG 7% REQUIRED UP TO KT668

SEQUENCE NUMBER	PATH TERMINATOR	WAYPOINT IDENTIFIER	FLY - OVER	COURSE/TRACK °M (°T)	DISTANCE (NM)	TURN DIRECTION	ALTITUDE	SPEED (kt)	NAV SPEC
001	CF	KT644	-	265 (270.2)	7.09	-	+4000 ft	-230	RNAV 1
002	TF	KT662	-	176 (180.6)	8.07	-	+6000 ft	-230	RNAV 1
003	TF	KT668	-	115 (120.3)	14.34	-	+FL110	-	RNAV 1
004	TF	KT674	-	125 (130.3)	13.37	-	-	-	RNAV 1
005	TF	BABKO	-	174 (179.2)	28.01	-	-	-	RNAV 1

**TUSIN 3M**

PDG 7% REQUIRED UP TO KT668

SEQUENCE NUMBER	PATH TERMINATOR	WAYPOINT IDENTIFIER	FLY - OVER	COURSE/TRACK °M (°T)	DISTANCE (NM)	TURN DIRECTION	ALTITUDE	SPEED (kt)	NAV SPEC
001	CF	KT644	-	265 (270.2)	7.09	-	+4000 ft	-230	RNAV 1
002	TF	KT662	-	176 (180.6)	8.07	-	+6000 ft	-230	RNAV 1
003	TF	KT668	-	115 (120.3)	14.34	-	+FL110	-	RNAV 1
004	TF	TUSIN	-	222 (226.7)	32.93	-	-	-	RNAV 1

**BAVOK 3M**

PDG 7% REQUIRED UP TO FL100

SEQUENCE NUMBER	PATH TERMINATOR	WAYPOINT IDENTIFIER	FLY - OVER	COURSE/TRACK °M (°T)	DISTANCE (NM)	TURN DIRECTION	ALTITUDE	SPEED (kt)	NAV SPEC
001	CF	KT644	-	265 (270.2)	7.09	-	+4000 ft	-230	RNAV 1
002	TF	KT672	-	237 (241.5)	17.35	-	+FL100	-	RNAV 1
003	TF	BAVOK	-	203 (208.2)	22.93	-	-	-	RNAV 1

**EMBIK 3M**

PDG 7% REQUIRED UP TO KT672

SEQUENCE NUMBER	PATH TERMINATOR	WAYPOINT IDENTIFIER	FLY - OVER	COURSE/TRACK °M (°T)	DISTANCE (NM)	TURN DIRECTION	ALTITUDE	SPEED (kt)	NAV SPEC
001	CF	KT644	-	265 (270.2)	7.09	-	+4000 ft	-230	RNAV 1
002	TF	KT672	-	237 (241.5)	17.35	-	+FL100	-	RNAV 1
003	TF	EMBIK	-	236 (241.2)	16.40	-	-	-	RNAV 1

**NUMBA 3M**

PDG 7% REQUIRED UP TO KT672

SEQUENCE NUMBER	PATH TERMINATOR	WAYPOINT IDENTIFIER	FLY - OVER	COURSE/TRACK °M (°T)	DISTANCE (NM)	TURN DIRECTION	ALTITUDE	SPEED (kt)	NAV SPEC
001	CF	KT644	-	265 (270.2)	7.09	-	+4000 ft	-230	RNAV 1
002	TF	KT672	-	237 (241.5)	17.35	-	+FL100	-	RNAV 1
003	TF	NUMBA	-	274 (278.7)	14.32	-	-	-	RNAV 1

**SUDOL 3M**

PDG 7% REQUIRED UP TO KT648

SEQUENCE NUMBER	PATH TERMINATOR	WAYPOINT IDENTIFIER	FLY - OVER	COURSE/TRACK °M (°T)	DISTANCE (NM)	TURN DIRECTION	ALTITUDE	SPEED (kt)	NAV SPEC
001	CF	KT644	-	265 (270.2)	7.09	-	+4000 ft	-230	RNAV 1
002	TF	KT648	-	323 (327.7)	12.81	-	-	-	RNAV 1
003	TF	KT651	-	264 (268.9)	7.34	-	+FL100	-	RNAV 1
004	TF	SUDOL	-	264 (268.8)	3.52	-	-	-	RNAV 1

WAYPOINT IDENTIFIER	COORDINATES	
DER27 (THR09)	50°28'33.8"N	019°03'34.5"E
BABKO	49°36'42.0"N	019°28'10.0"E
BAREX	50°53'40.0"N	018°44'18.0"E
BAVOK	50°00'10.0"N	018°11'43.0"E
EMBIK	50°12'29.0"N	018°06'11.0"E
KT644	50°28'34.6"N	018°52'28.9"E
KT648	50°39'23.9"N	018°41'45.7"E
KT649	50°43'57.0"N	018°40'12.5"E
KT651	50°39'16.1"N	018°30'13.4"E
KT654	50°43'14.3"N	019°02'25.8"E
KT662	50°20'31.0"N	018°52'21.5"E
KT668	50°13'18.6"N	019°11'40.9"E
KT672	50°20'20.4"N	018°28'36.7"E
KT674	50°04'40.9"N	019°27'33.0"E
KURON	50°37'54.0"N	020°08'53.0"E
LOBMU	50°46'15.1"N	019°37'42.4"E
LUXAR	49°55'48.0"N	021°10'31.0"E
NAVUR	51°00'47.0"N	019°54'40.0"E
NUMBA	50°22'32.0"N	018°06'31.0"E
REGTO	49°24'13.0"N	020°39'53.0"E
SUDOL	50°39'12.0"N	018°24'42.0"E
TUSIN	49°50'51.0"N	018°34'22.2"E