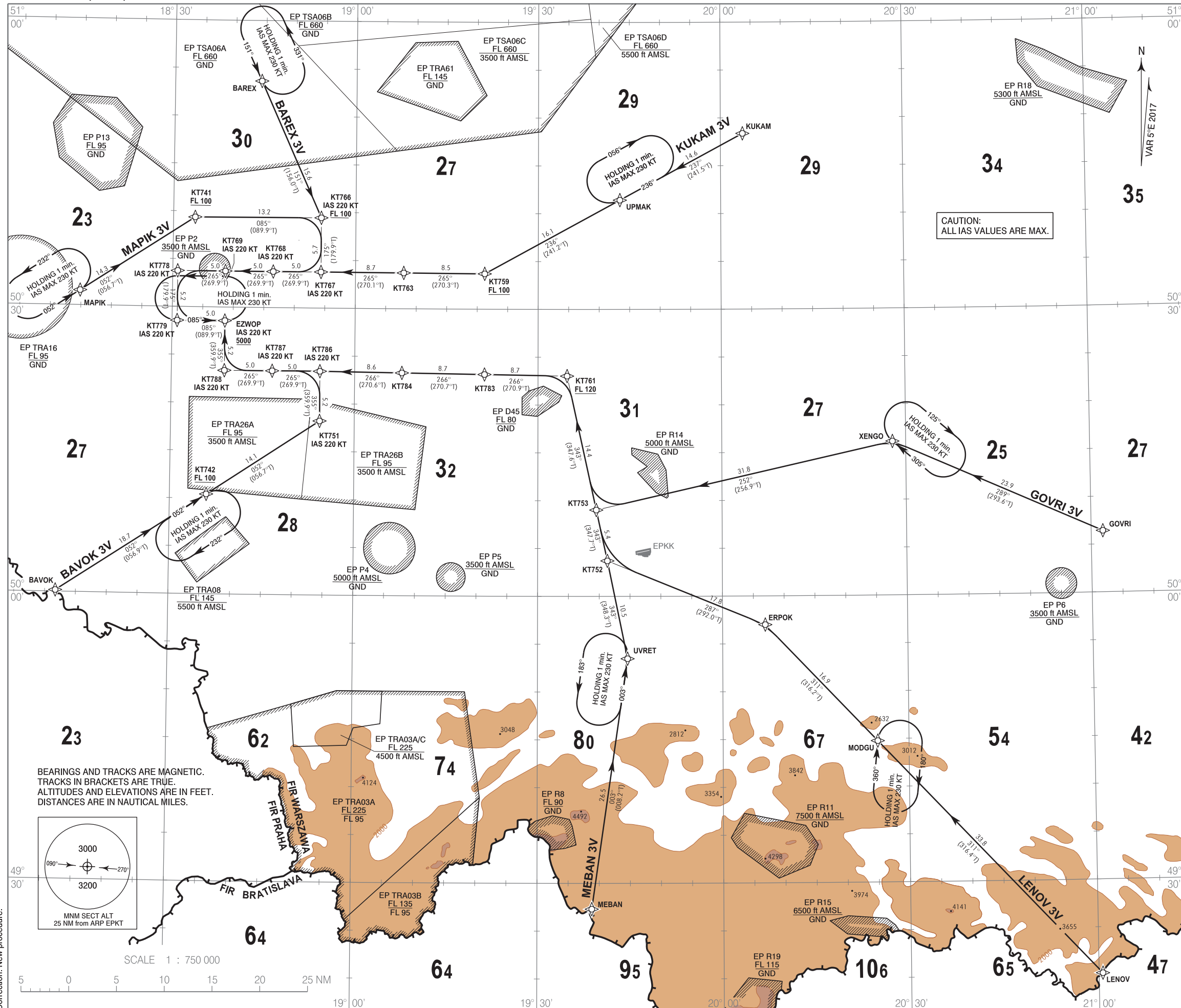


**RNAV 1 (GNSS)
STANDARD ARRIVAL CHART
INSTRUMENT (STAR) - ICAO**

TRANSITION ALTITUDE 6500

Kraków APPROACH 121.075, 135.405
Katowice TOWER 129.255
ATIS 120.230

**Katowice - Pyrzowice
RWY 09**



1. All aircraft which cannot follow and utilize RNAV 1 procedures shall advise Krakow APP upon first contact. Radar vectoring will be provided.
2. Type of expected approach will be broadcasted by ATIS. Crews willing to perform other approach type shall advise Krakow APP upon first contact.
3. Holding patterns as directed by ATC, available for non RNAV 1 approved aircraft.
4. During peak hours expect radar vectoring at downwind position to expedite traffic handling and for separation reasons.
5. For descent planning expect base turn abeam 10-15 NM final.

- RADIO COMMUNICATION FAILURE PROCEDURE**
1. Set transponder to 7600.
 2. Continue with assigned STAR or on previously assigned heading. Descend to last cleared and acknowledged level.
 3. After 3 minutes proceed direct to KAX DVOR/DME and hold. Descend in holding pattern. Execute VOR approach for preferred runway and land.

CAUTION:
ALL IAS VALUES ARE MAX.

Correction: New procedure.

**RNAV 1 (GNSS)
STANDARD ARRIVAL CHART
INSTRUMENT (STAR) - ICAO**

**Katowice - Pyrzowice
RWY 09**

MAPIK 3V

SEQUENCE NUMBER	PATH TERMINATOR	WAYPOINT IDENTIFIER	COURSE/TRACK °M (°T)	DISTANCE (NM)	ALTITUDE	SPEED (kt)	NAV SPEC
001	IF	MAPIK	-	-	-	-	RNAV 1
002	TF	KT741	052 (056.7)	14.26	+FL100	-	RNAV 1
003	TF	KT766	085 (089.9)	13.20	+FL100	-220	RNAV 1
004	TF	KT767	175 (179.9)	5.67	-	-220	RNAV 1
005	TF	KT768	265 (269.9)	5.00	-	-220	RNAV 1
006	TF	KT769	265 (269.9)	5.00	-	-220	RNAV 1
007	TF	KT778	265 (269.9)	5.00	-	-220	RNAV 1
008	TF	KT779	175 (179.9)	5.18	-	-220	RNAV 1
009	TF	EZWOP	085 (089.9)	5.00	+5000 ft	-220	RNAV 1

BAREX 3V

SEQUENCE NUMBER	PATH TERMINATOR	WAYPOINT IDENTIFIER	COURSE/TRACK °M (°T)	DISTANCE (NM)	ALTITUDE	SPEED (kt)	NAV SPEC
001	IF	BAREX	-	-	-	-	RNAV 1
002	TF	KT766	151 (156.0)	15.60	+FL100	-220	RNAV 1
003	TF	KT767	175 (179.9)	5.67	-	-220	RNAV 1
004	TF	KT768	265 (269.9)	5.00	-	-220	RNAV 1
005	TF	KT769	265 (269.9)	5.00	-	-220	RNAV 1
006	TF	KT778	265 (269.9)	5.00	-	-220	RNAV 1
007	TF	KT779	175 (179.9)	5.18	-	-220	RNAV 1
008	TF	EZWOP	085 (089.9)	5.00	+5000 ft	-220	RNAV 1

KUKAM 3V

SEQUENCE NUMBER	PATH TERMINATOR	WAYPOINT IDENTIFIER	COURSE/TRACK °M (°T)	DISTANCE (NM)	ALTITUDE	SPEED (kt)	NAV SPEC
001	IF	KUKAM	-	-	-	-	RNAV 1
002	TF	UPMAK	237 (241.5)	14.61	-	-	RNAV 1
003	TF	KT759	236 (241.2)	16.11	+FL100	-	RNAV 1
004	TF	KT763	265 (270.3)	8.48	-	-	RNAV 1
005	TF	KT767	265 (270.1)	8.67	-	-220	RNAV 1
006	TF	KT768	265 (269.9)	5.00	-	-220	RNAV 1
007	TF	KT769	265 (269.9)	5.00	-	-220	RNAV 1
008	TF	KT778	265 (269.9)	5.00	-	-220	RNAV 1
009	TF	KT779	175 (179.9)	5.18	-	-220	RNAV 1
010	TF	EZWOP	085 (089.9)	5.00	+5000 ft	-220	RNAV 1

GOVRI 3V

SEQUENCE NUMBER	PATH TERMINATOR	WAYPOINT IDENTIFIER	COURSE/TRACK °M (°T)	DISTANCE (NM)	ALTITUDE	SPEED (kt)	NAV SPEC
001	IF	GOVRI	-	-	-	-	RNAV 1
002	TF	XENGO	289 (293.6)	23.93	-	-	RNAV 1
003	TF	KT753	252 (256.9)	31.83	-	-	RNAV 1
004	TF	KT761	343 (347.6)	14.35	+FL120	-	RNAV 1
005	TF	KT783	266 (270.9)	8.65	-	-	RNAV 1
006	TF	KT784	266 (270.7)	8.65	-	-	RNAV 1
007	TF	KT786	266 (270.6)	8.59	-	-220	RNAV 1
008	TF	KT787	265 (269.9)	5.00	-	-220	RNAV 1
009	TF	KT788	265 (269.9)	5.00	-	-220	RNAV 1
010	TF	EZWOP	355 (359.9)	5.20	+5000 ft	-220	RNAV 1

LENOV 3V

SEQUENCE NUMBER	PATH TERMINATOR	WAYPOINT IDENTIFIER	COURSE/TRACK °M (°T)	DISTANCE (NM)	ALTITUDE	SPEED (kt)	NAV SPEC
001	IF	LENOV	-	-	-	-	RNAV 1
002	TF	MODGU	311 (316.4)	33.84	-	-	RNAV 1
003	TF	ERPOK	311 (316.2)	16.92	-	-	RNAV 1
004	TF	KT752	287 (292.0)	17.82	-	-	RNAV 1
005	TF	KT753	343 (347.7)	5.44	-	-	RNAV 1
006	TF	KT761	343 (347.6)	14.35	+FL120	-	RNAV 1
007	TF	KT783	266 (270.9)	8.65	-	-	RNAV 1
008	TF	KT784	266 (270.7)	8.65	-	-	RNAV 1
009	TF	KT786	266 (270.6)	8.59	-	-220	RNAV 1
010	TF	KT787	265 (269.9)	5.00	-	-220	RNAV 1
011	TF	KT788	265 (269.9)	5.00	-	-220	RNAV 1
012	TF	EZWOP	355 (359.9)	5.20	+5000 ft	-220	RNAV 1

MEBAN 3V

SEQUENCE NUMBER	PATH TERMINATOR	WAYPOINT IDENTIFIER	COURSE/TRACK °M (°T)	DISTANCE (NM)	ALTITUDE	SPEED (kt)	NAV SPEC
001	IF	MEBAN	-	-	-	-	RNAV 1
002	TF	UVRET	003 (008.2)	26.48	-	-	RNAV 1
003	TF	KT752	343 (348.3)	10.46	-	-	RNAV 1
004	TF	KT753	343 (347.7)	5.44	-	-	RNAV 1
005	TF	KT761	343 (347.6)	14.35	+FL120	-	RNAV 1
006	TF	KT783	266 (270.9)	8.65	-	-	RNAV 1
007	TF	KT784	266 (270.7)	8.65	-	-	RNAV 1
008	TF	KT786	266 (270.6)	8.59	-	-220	RNAV 1
009	TF	KT787	265 (269.9)	5.00	-	-220	RNAV 1
010	TF	KT788	265 (269.9)	5.00	-	-220	RNAV 1
011	TF	EZWOP	355 (359.9)	5.20	+5000 ft	-220	RNAV 1

BAVOK 3V

SEQUENCE NUMBER	PATH TERMINATOR	WAYPOINT IDENTIFIER	COURSE/TRACK °M (°T)	DISTANCE (NM)	ALTITUDE	SPEED (kt)	NAV SPEC
001	IF	BAVOK	-	-	-	-	RNAV 1
002	TF	KT742	052 (056.9)	18.70	+FL100	-	RNAV 1
003	TF	KT751	052 (056.7)	14.12	-	-220	RNAV 1
004	TF	KT786	355 (359.9)	5.20	-	-220	RNAV 1
005	TF	KT787	265 (269.9)	5.00	-	-220	RNAV 1
006	TF	KT788	265 (269.9)	5.00	-	-220	RNAV 1
007	TF	EZWOP	355 (359.9)	5.20	+5000 ft	-220	RNAV 1

WAYPOINT IDENTIFIER	COORDINATES	
	Latitude	Longitude
BAREX	50°53'40.0"N	018°44'18.0"E
BAVOK	50°00'10.0"N	018°11'43.0"E
ERPOK	49°56'59.8"N	020°06'55.1"E
EZWOP	50°28'34.2"N	018°38'39.4"E
GOVRI	50°06'25.3"N	021°01'54.0"E
KT741	50°39'22.2"N	018°33'34.2"E
KT742	50°10'25.5"N	018°35'59.1"E
KT751	50°18'11.8"N	018°54'20.1"E
KT752	50°03'42.7"N	019°41'19.8"E
KT753	50°09'01.6"N	019°39'31.7"E
KT759	50°33'41.7"N	019°21'13.1"E
KT761	50°23'01.7"N	019°34'45.1"E
KT763	50°33'44.7"N	019°07'55.4"E
KT766	50°39'26.0"N	018°54'18.7"E
KT767	50°33'46.3"N	018°54'20.0"E
KT768	50°33'45.8"N	018°46'29.5"E
KT769	50°33'45.4"N	018°38'39.0"E
KT778	50°33'44.9"N	018°30'48.6"E
KT779	50°28'33.2"N	018°30'49.8"E
KT783	50°23'10.4"N	019°21'14.5"E
KT784	50°23'17.5"N	019°07'43.9"E
KT786	50°23'23.5"N	018°54'18.9"E
KT787	50°23'23.1"N	018°46'30.2"E
KT788	50°23'22.6"N	018°38'40.6"E
KUKAM	50°48'22.0"N	020°03'38.0"E
LENOV	49°20'11.0"N	021°00'37.0"E
MAPIK	50°31'34.0"N	018°14'51.0"E
MEBAN	49°27'18.0"N	019°38'48.0"E
MODGU	49°44'46.5"N	020°24'58.0"E
UPMAK	50°41'25.3"N	019°43'24.5"E
UVRET	49°53'28.9"N	019°44'35.9"E
XENGO	50°16'04.7"N	020°27'50.5"E