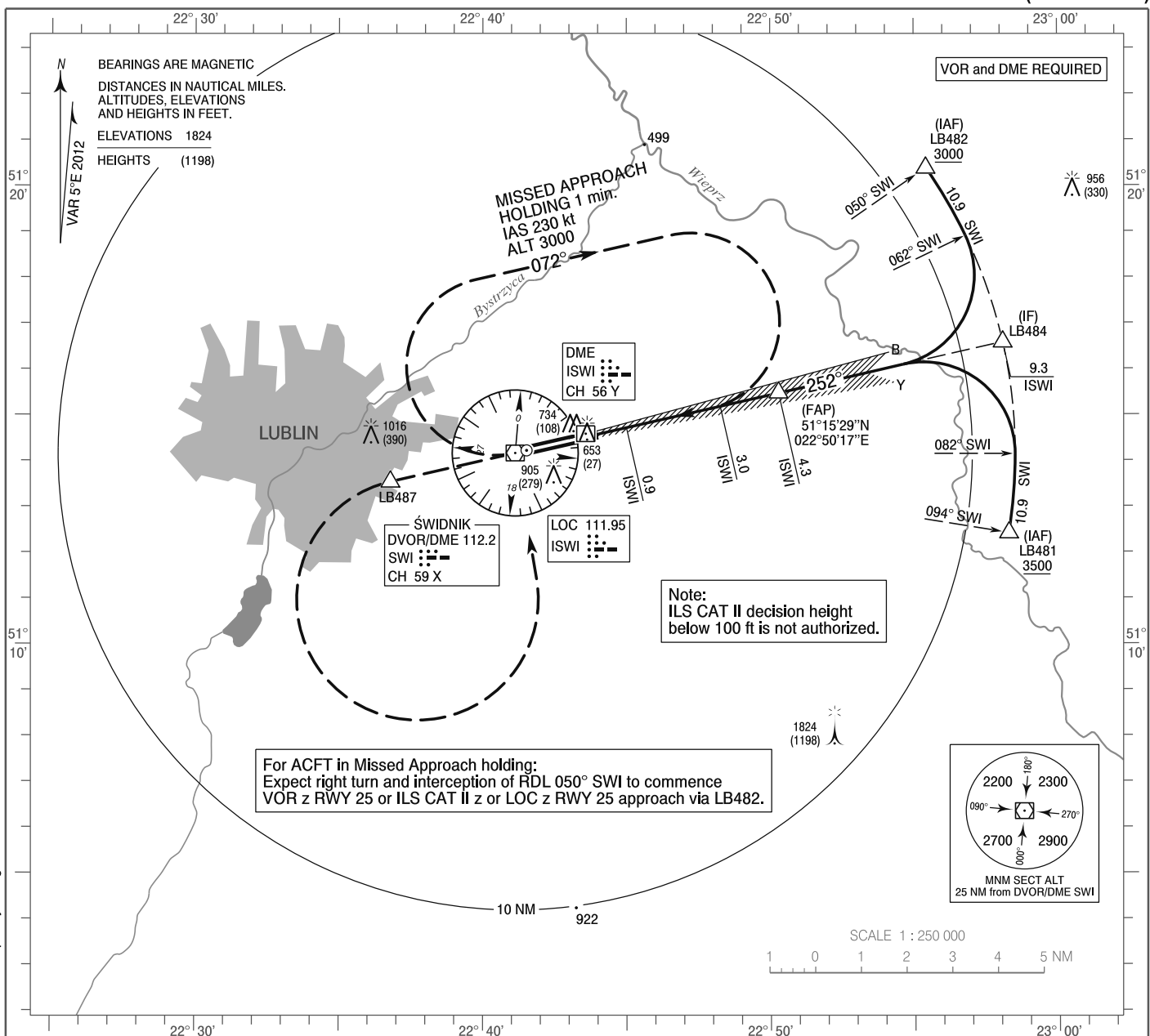


**INSTRUMENT
APPROACH
CHART - ICAO**

AERODROME ELEV 633 ft
THR RWY 25 ELEV 626 ft
HEIGHTS RELATED TO THR RWY 25

Lublin TOWER 136.430

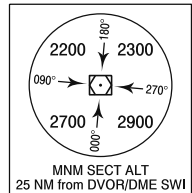
**Lublin
ILS CAT II z or LOC z
RWY 25 (CAT A/B/C/D)**



Correction: Frequency changed.

For ACFT in Missed Approach holding:
Expect right turn and interception of RDL 050° SWI to commence
VOR z RWY 25 or ILS CAT II z or LOC z RWY 25 approach via LB482.

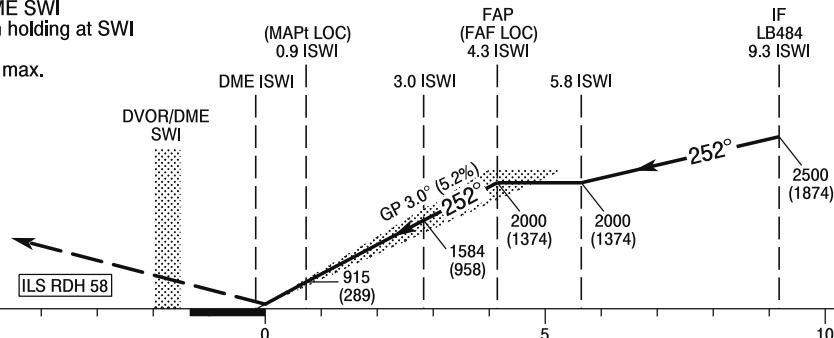
Note:
ILS CAT II decision height
below 100 ft is not authorized.



MISSED APPROACH

Climb straight ahead to LB487
then turn left to DVOR/DME SWI
and join Missed Approach holding at SWI
climbing to 3000 (2374).
Turn limited to 210 kt IAS max.

TRANSITION ALTITUDE 6500



SCALE 1 : 250 000 NM FROM THR RWY 25

OCA (OCH)					Distance FAF - MAPt 3.4 NM								
Cat. of ACFT	A	B	C	D	Speed	kt	80	100	120	140	160	180	
					Straight - in	Cat. I	864 (238)	876 (250)	884 (258)	895 (269)	Time	min : s	2 : 33
Cat. II	695 (69)	712 (86)	724 (98)	738 (112)		Rate of descent	ft / min	430	540	640	740	850	960
LOC	960 (334)	960 (334)	960 (334)	960 (334)			Final approach distance/altitude (height)						
Circling (OCH AAL)*	1200 (567)	1200 (567)	1410 (777)	1410 (777)	Distance		4	3	2	1			
*Circling south of aerodrome only					Altitude (height)		1900 (1274)	1580 (954)	1260 (634)	940 (314)			

INSTRUMENT
APPROACH
CHART - ICAOLublin
ILS CAT II z or LOC z
RWY 25 (CAT A/B/C/D)

FIX / POINT	LATITUDE	LONGITUDE	FIX FORMATION	
IAF LB482	51°20'23.3"N	022°55'25.4"E	055.15° GEO (050° MAG) DVOR SWI	10.92 NM DME SWI
IAF LB481	51°12'24.9"N	022°58'16.6"E	099.14° GEO (094° MAG) DVOR SWI	10.92 NM DME SWI
IF LB484	51°16'35.0"N	022°58'04.8"E	257.32° GEO (252° MAG) LOC ISWI	9.33 NM DME ISWI
FAP (FAF LOC)	51°15'28.6"N	022°50'16.8"E	257.23° GEO (252° MAG) LOC ISWI	4.31 NM DME ISWI
MAPt (LOC)	51°14'43.3"N	022°44'59.7"E	257.17° GEO (252° MAG) LOC ISWI	0.90 NM DME ISWI
LB487	51°13'32.6"N	022°36'47.3"E	257.08° GEO (252° MAG) DVOR SWI	2.80 NM DME SWI
Final approach descent angle: 3.00°				