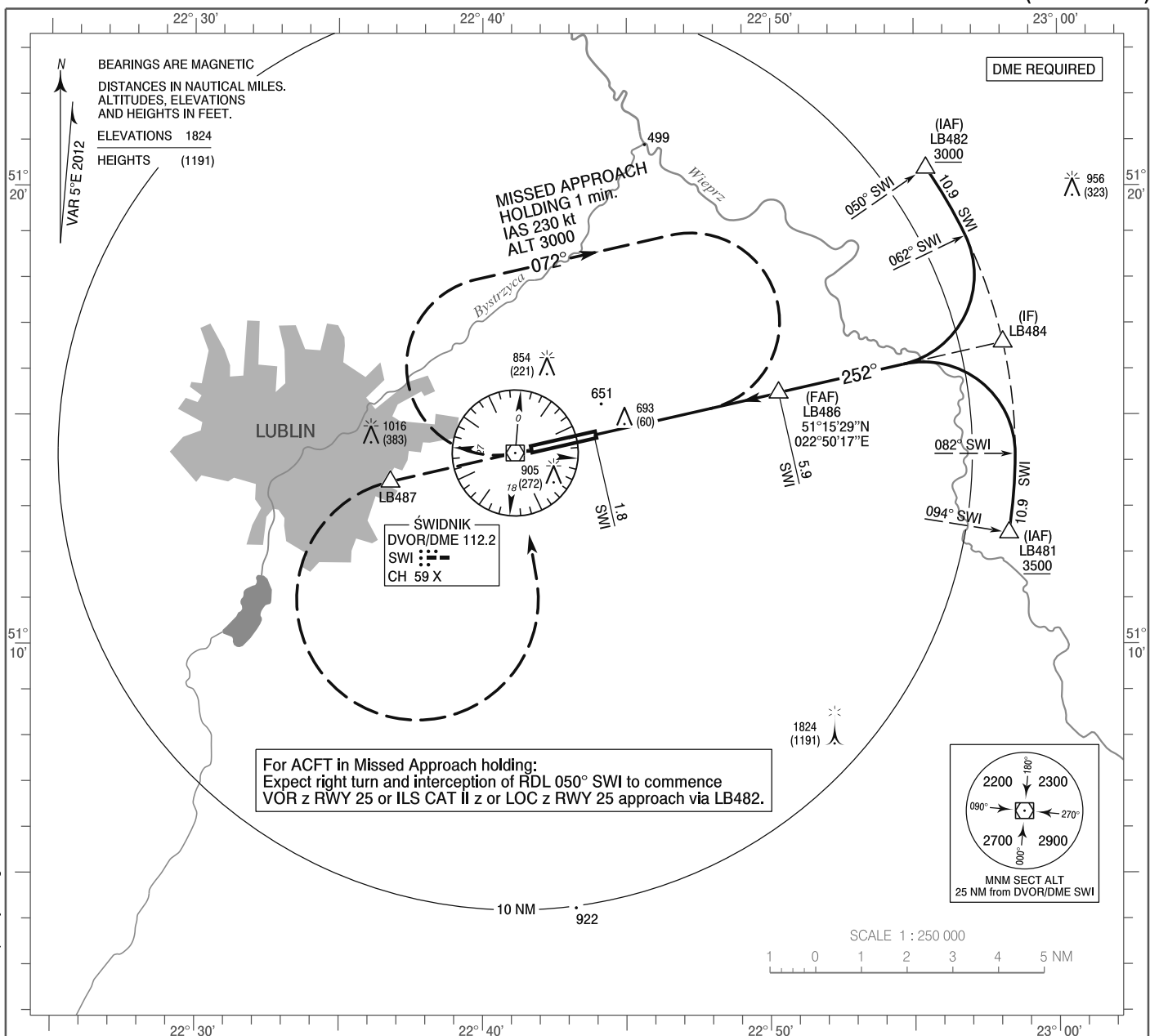


**INSTRUMENT
APPROACH
CHART - ICAO**

AERODROME ELEV 633 ft
THR RWY 25 ELEV 626 ft
HEIGHTS RELATED TO AD ELEV

Lublin TOWER 136.430

**Lublin
VOR z
RWY 25 (CAT A/B/C/D)**

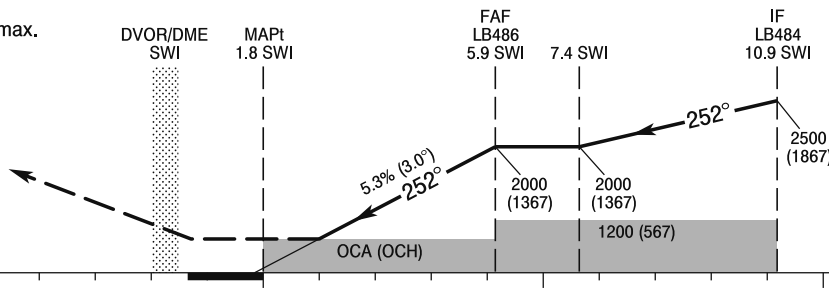


Correction: Frequency changed.

MISSED APPROACH

Climb straight ahead to LB487,
then turn left and return to DVOR/DME SWI
and join Missed Approach holding at SWI
climbing to 3000 (2367)
Turn limited to 210 kt IAS max.

TRANSITION ALTITUDE 6500



OCA (OCH)					Distance FAF - MAPt 4.1 NM								
Cat. of ACFT	A	B	C	D	Speed	kt	60	80	100	120	140	160	180
Straight-in	1000 (367)	1000 (367)	1000 (367)	1000 (367)	Time	min : s	4 : 08	3 : 06	2 : 29	2 : 04	1 : 46	1 : 33	1 : 23
					Rate of descent	ft / min	320	430	540	640	750	860	960
					Final approach distance/altitude (height)								
Circling*	1200 (567)	1200 (567)	1410 (777)	1410 (777)	Distance		5	4	3	2			
*Circling south of aerodrome only					Altitude (height)		1720 (1087)	1400 (767)	1080 (447)	760 (127)			

INSTRUMENT
APPROACH
CHART - ICAOLublin
VOR z
RWY 25 (CAT A/B/C/D)

FIX / POINT	LATITUDE	LONGITUDE	FIX FORMATION	
IAF LB482	51°20'23.3"N	022°55'25.4"E	055.15° GEO (050° MAG) DVOR SWI	10.93 NM DME SWI
IAF LB481	51°12'24.9"N	022°58'16.6"E	099.14° GEO (094° MAG) DVOR SWI	10.93 NM DME SWI
IF LB484	51°16'35.0"N	022°58'04.8"E	077.10° GEO (072° MAG) DVOR SWI	10.92 NM DME SWI
FAF LB486	51°15'28.6"N	022°50'16.8"E	077.12° GEO (072° MAG) DVOR SWI	5.90 NM DME SWI
MAPt	51°14'33.7"N	022°43'52.0"E	077.12° GEO (072° MAG) DVOR SWI	1.77 NM DME SWI
LB487	51°13'32.6"N	022°36'47.3"E	257.08° GEO (252° MAG) DVOR SWI	2.80 NM DME SWI
Final approach descent angle: 3.02°				