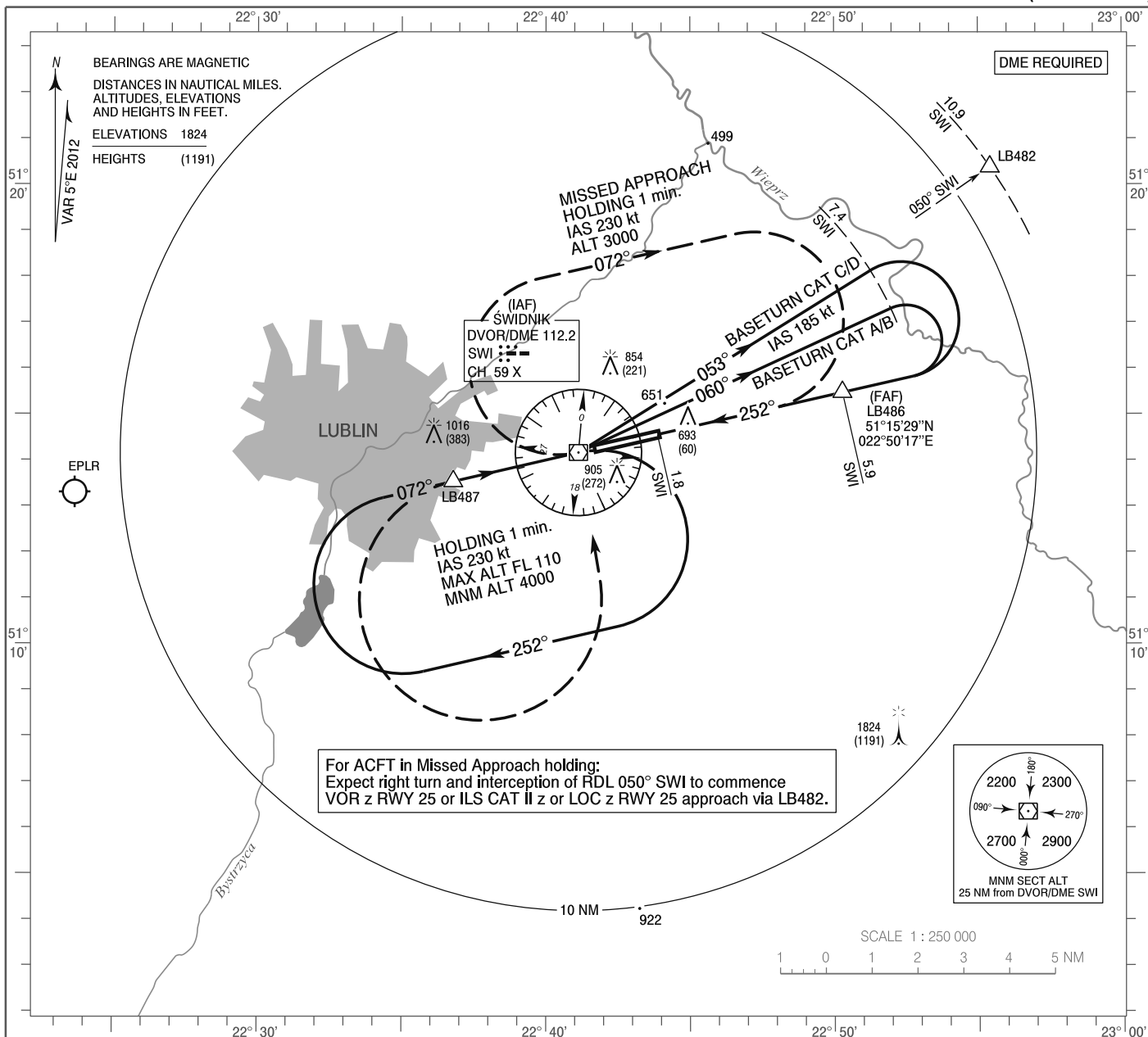


**INSTRUMENT  
APPROACH  
CHART - ICAO**

AERODROME ELEV 633 ft  
THR RWY 25 ELEV 626 ft  
HEIGHTS RELATED TO AD ELEV

Lublin TOWER 136.430

**Lublin  
VOR y  
RWY 25 (CAT A/B/C/D)**

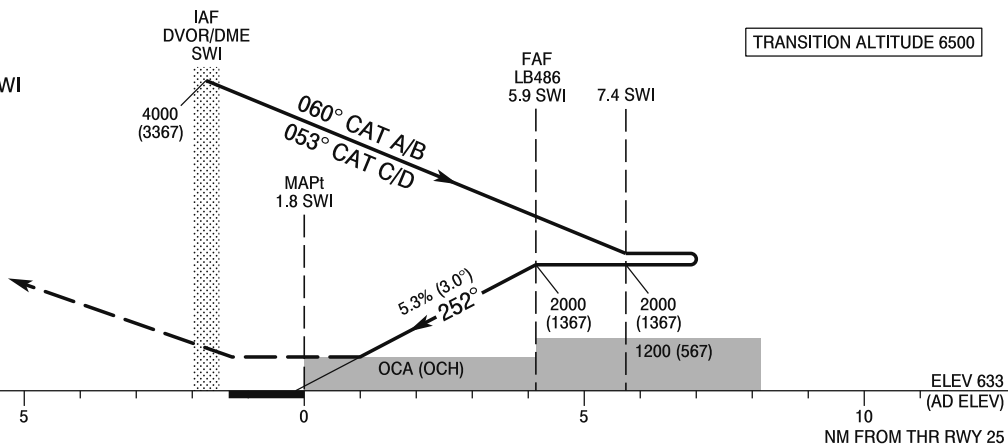


Correction: Frequency changed.

**MISSED APPROACH**

Climb straight ahead to LB487, then turn left and return to DVOR/DME SWI and join Missed Approach holding at SWI climbing to 3000 (2367). Turn limited to 210 kt IAS max.

TRANSITION ALTITUDE 6500



SCALE 1 : 250 000

| Cat. of ACFT                      | OCA (OCH)  |            |            |            | Distance FAF - MAPt 4.1 NM                |          |             |            |            |           |        |        |        |
|-----------------------------------|------------|------------|------------|------------|---|----------|-------------|------------|------------|-----------|--------|--------|--------|
|                                   | A          | B          | C          | D          | Speed                                     | kt       | 60          | 80         | 100        | 120       | 140    | 160    | 180    |
| Straight - in                     | 1000 (367) | 1000 (367) | 1000 (367) | 1000 (367) | Time                                      | min : s  | 4 : 08      | 3 : 06     | 2 : 29     | 2 : 04    | 1 : 46 | 1 : 33 | 1 : 23 |
|                                   |            |            |            |            | Rate of descent                           | ft / min | 320         | 430        | 540        | 640       | 750    | 860    | 960    |
| Circling*                         | 1200 (567) | 1200 (567) | 1410 (777) | 1410 (777) | Final approach distance/altitude (height) |          |             |            |            |           |        |        |        |
|                                   |            |            |            |            | Distance                                  |          | 5           | 4          | 3          | 2         |        |        |        |
| *Circling south of aerodrome only |            |            |            |            | Altitude (height)                         |          | 1720 (1087) | 1400 (767) | 1080 (447) | 760 (127) |        |        |        |

**INSTRUMENT  
APPROACH  
CHART - ICAO**

**Lublin**  
**VOR y**  
**RWY 25 (CAT A/B/C/D)**

| FIX / POINT                         | LATITUDE     | LONGITUDE     | FIX FORMATION                         |                    |
|-------------------------------------|--------------|---------------|---------------------------------------|--------------------|
| IAF<br>DVOR/DME SWI                 | 51°14'10.2"N | 022°41'07.7"E |                                       |                    |
| FAF<br>LB486                        | 51°15'28.6"N | 022°50'16.8"E | 077.12° GEO<br>(072° MAG)<br>DVOR SWI | 5.90 NM<br>DME SWI |
| MAPt                                | 51°14'33.7"N | 022°43'52.0"E | 077.12° GEO<br>(072° MAG)<br>DVOR SWI | 1.77 NM<br>DME SWI |
| LB487                               | 51°13'32.6"N | 022°36'47.3"E | 257.08° GEO<br>(252° MAG)<br>DVOR SWI | 2.80 NM<br>DME SWI |
| Final approach descent angle: 3.02° |              |               |                                       |                    |