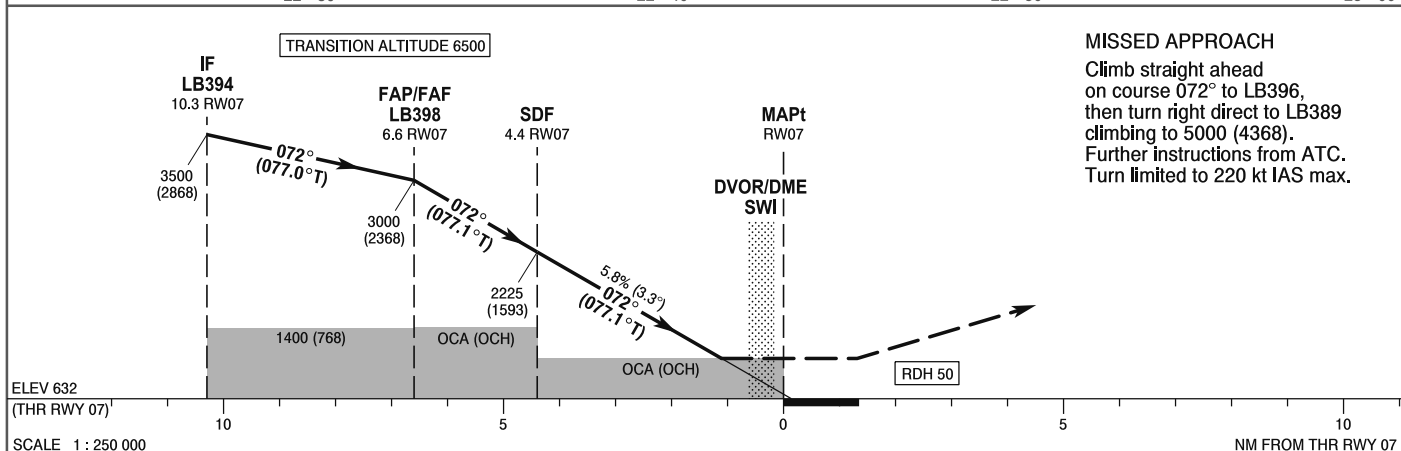
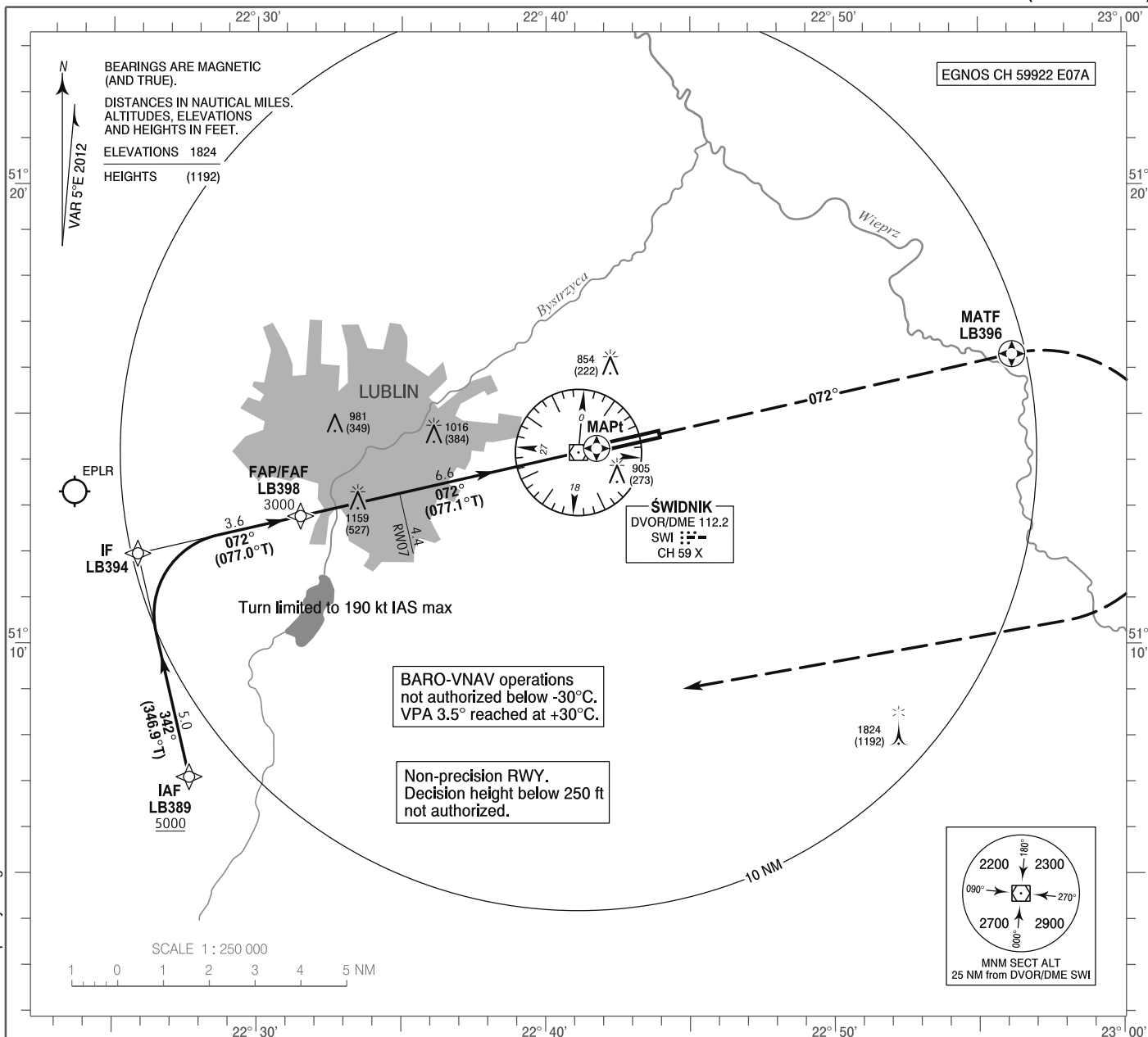


**INSTRUMENT  
APPROACH  
CHART - ICAO**

AERODROME ELEV 633 ft  
THR RWY 07 ELEV 632 ft  
HEIGHTS RELATED TO THR RWY 07

Lublin TOWER 136.430

**Lublin**  
**RNAV (GNSS)**  
**RWY 07 (CAT A/B/C/D)**



OCA (OCH)					Distance FAF - MAPt 6.6								
Cat. of ACFT	A	B	C	D	Speed	kt	80	100	120	140	160	180	
Straight - in	LNAV	1070 (438)	1070 (438)	1070 (438)	1070 (438)	Time	min : s	4 : 58	3 : 58	3 : 10	2 : 50	2 : 29	2 : 12
		SDF not available				Rate of descent	ft / min	460	580	700	810	930	1050
	LNAV / VNAV	980 (348)	980 (348)	990 (358)	990 (358)	Final approach distance/altitude (height)							
	LPV	813 (181)	825 (193)	834 (202)	846 (214)	Distance	6	5	4	3	2		
Circling (OCH AAL) south of AD only					Altitude (height)	2800 (2168)	2450 (1818)	2100 (1468)	1730 (1098)	1380 (748)			