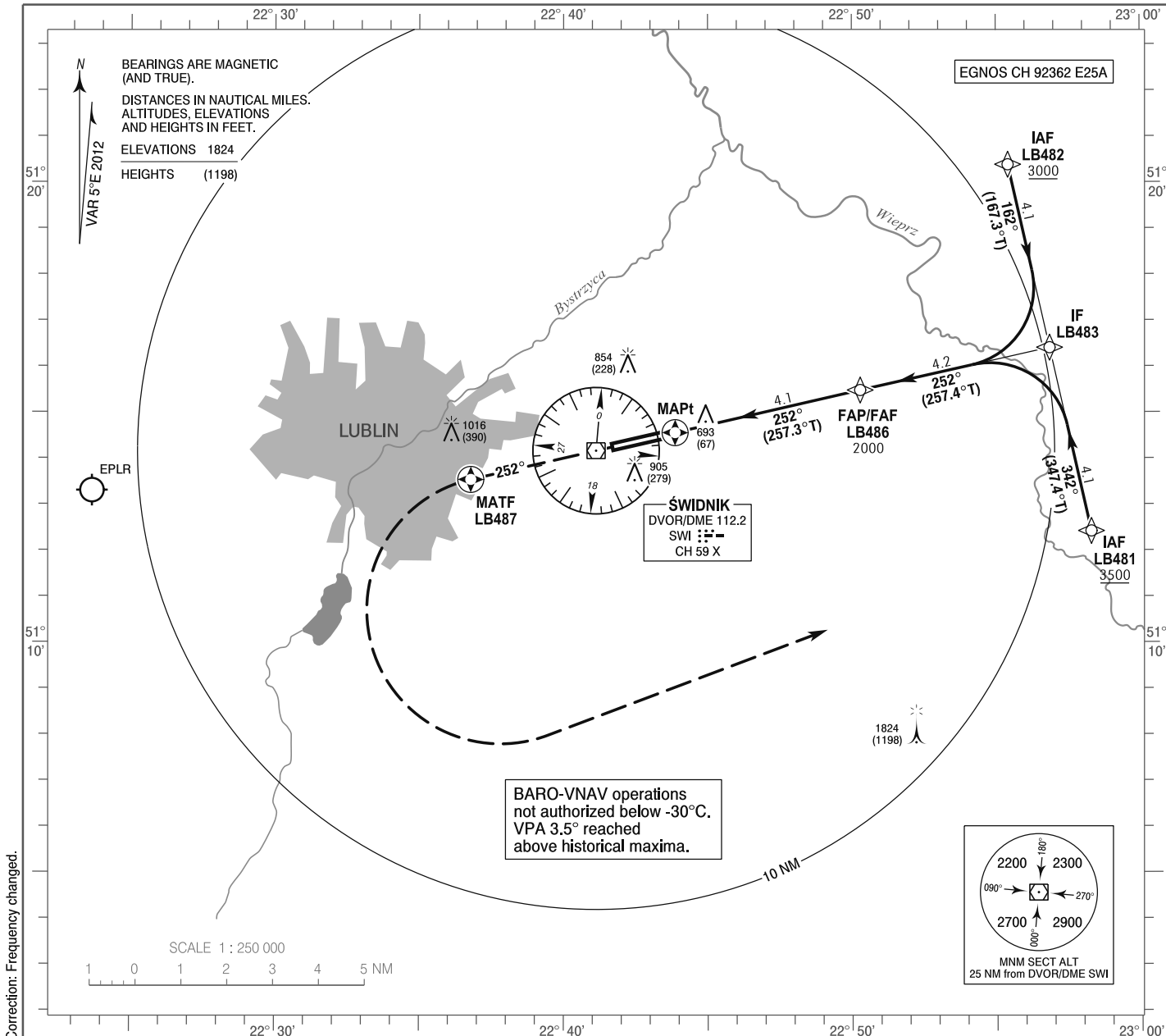


**INSTRUMENT
APPROACH
CHART - ICAO**

AERODROME ELEV 633 ft
THR RWY 25 ELEV 626 ft
HEIGHTS RELATED TO THR RWY 25

Lublin TOWER 136.430

**Lublin
RNAV (GNSS)
RWY 25 (CAT A/B/C/D)**

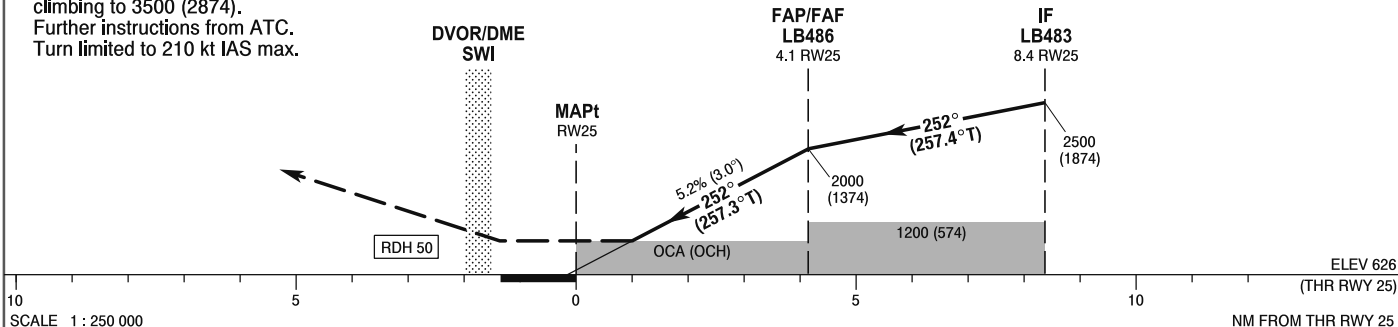


Correction: Frequency changed.

MISSED APPROACH

Climb straight ahead on course 252° to LB487, then turn left direct to LB481 climbing to 3500 (2874). Further instructions from ATC. Turn limited to 210 kt IAS max.

TRANSITION ALTITUDE 6500



ELEV 626 (THR RWY 25)
SCALE 1 : 250 000
NM FROM THR RWY 25

| OCA (OCH) | | | | | Distance FAF - MAPt 4.1 | | | | | | | | |
|-----------------------------------|-----------|---------------|------------|------------|-------------------------|-------------------|---|-------------|-------------|------------|------------|--------|--------|
| Cat. of ACFT | | A | B | C | D | Speed | kt | 80 | 100 | 120 | 140 | 160 | 180 |
| | | Straight - in | LNAV | 1000 (374) | 1000 (374) | 1000 (374) | 1000 (374) | Time | min : s | 3 : 06 | 2 : 29 | 2 : 04 | 1 : 46 |
| LNAV / VNAV | 920 (294) | | 930 (304) | 940 (314) | 950 (324) | Rate of descent | ft / min | 420 | 530 | 640 | 740 | 850 | 960 |
| LPV | 864 (238) | | 877 (251) | 885 (259) | 895 (269) | | Final approach distance/altitude (height) | | | | | | |
| Circling (OCH AAL)* | | 1200 (567) | 1200 (567) | 1410 (777) | 1410 (777) | Distance | | 4 | 3 | 2 | 1 | | |
| *Circling south of aerodrome only | | | | | | Altitude (height) | | 1950 (1324) | 1640 (1014) | 1320 (694) | 1000 (374) | | |