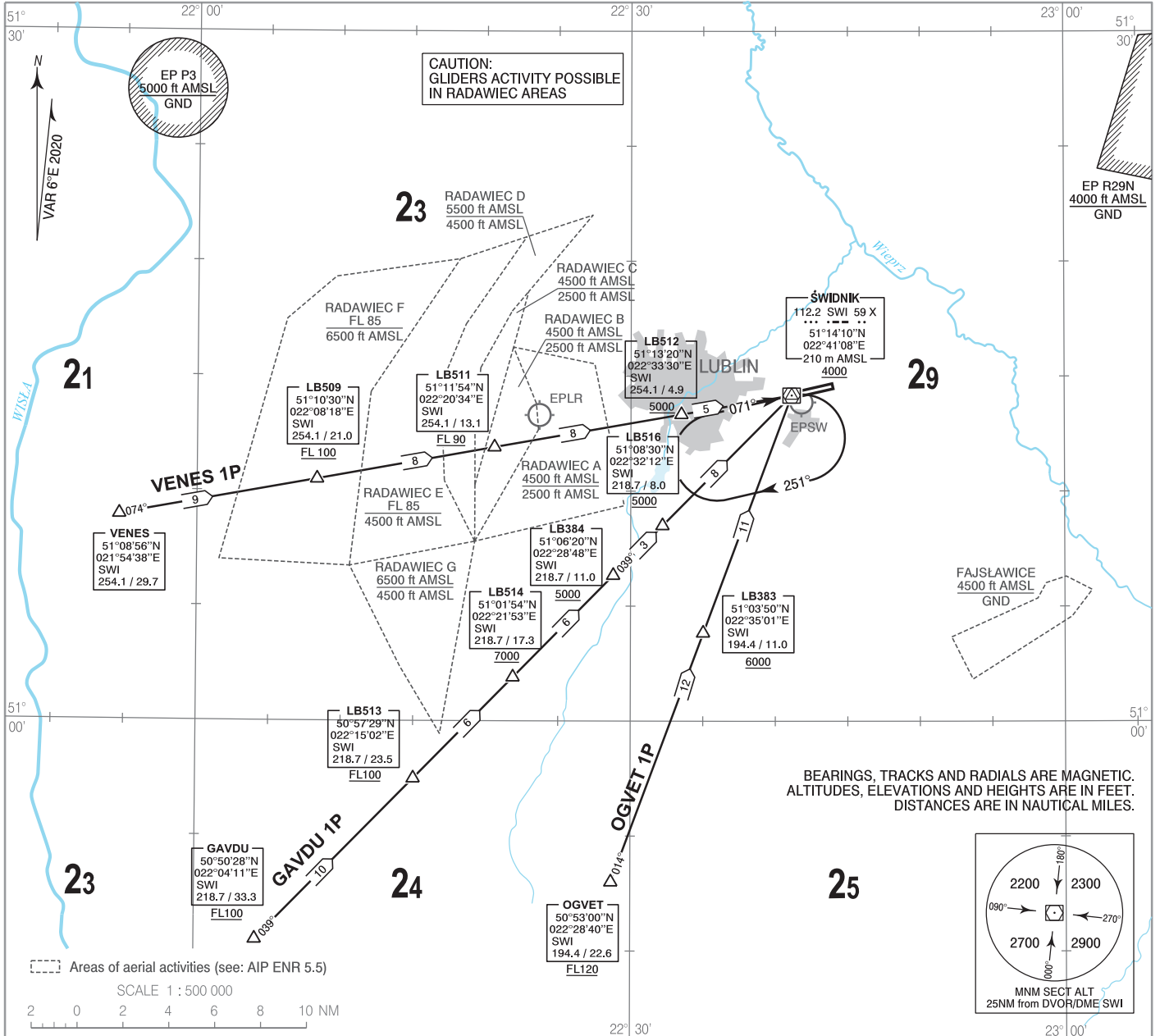


**STANDARD ARRIVAL CHART
INSTRUMENT
(STAR) - ICAO**

TRANSITION ALTITUDE 6500

Lublin TOWER 136.430

**Lublin
RWY 07 / 25**



**STANDARD ARRIVAL CHART
 INSTRUMENT (STAR) - ICAO**

**Lublin
 RWY 07/25
 STAR WITH ROUTE DESIGNATOR PAPA**

DESIGNATOR	IDENTIFICATION SIGNIFICANT POINTS	MAG TRACK (°)	DISTANCE (NM)	ALTITUDE RESTRICTION	REMARKS
VENES 1P VENES ONE PAPA	Δ REP VENES	-	-	-	
	Δ REP LB509	074	8.75	<u>FL100</u>	
	Δ REP LB511	074	7.83	<u>FL90</u>	
	Δ REP LB512	074	8.26	<u>5000 ft</u>	
	Δ DVOR/DME SWI	074	4.87	<u>4000 ft</u>	
GAVDU 1P GAVDU ONE PAPA	Δ REP GAVDU	-	-	<u>FL100</u>	
	Δ REP LB513	039	9.82	<u>FL100</u>	
	Δ REP LB514	039	6.19	<u>7000 ft</u>	
	Δ REP LB384	039	6.22	<u>5000 ft</u>	
	Δ REP LB516	039	3.06	<u>5000 ft</u>	
	Δ DVOR/DME SWI	039	7.99	<u>4000 ft</u>	
OGVET 1P OGVET ONE PAPA	Δ REP OGVET	-	-	<u>FL120</u>	
	Δ REP LB383	014	11.56	<u>6000 ft</u>	
	Δ DVOR/DME SWI	014	11.04	<u>4000 ft</u>	