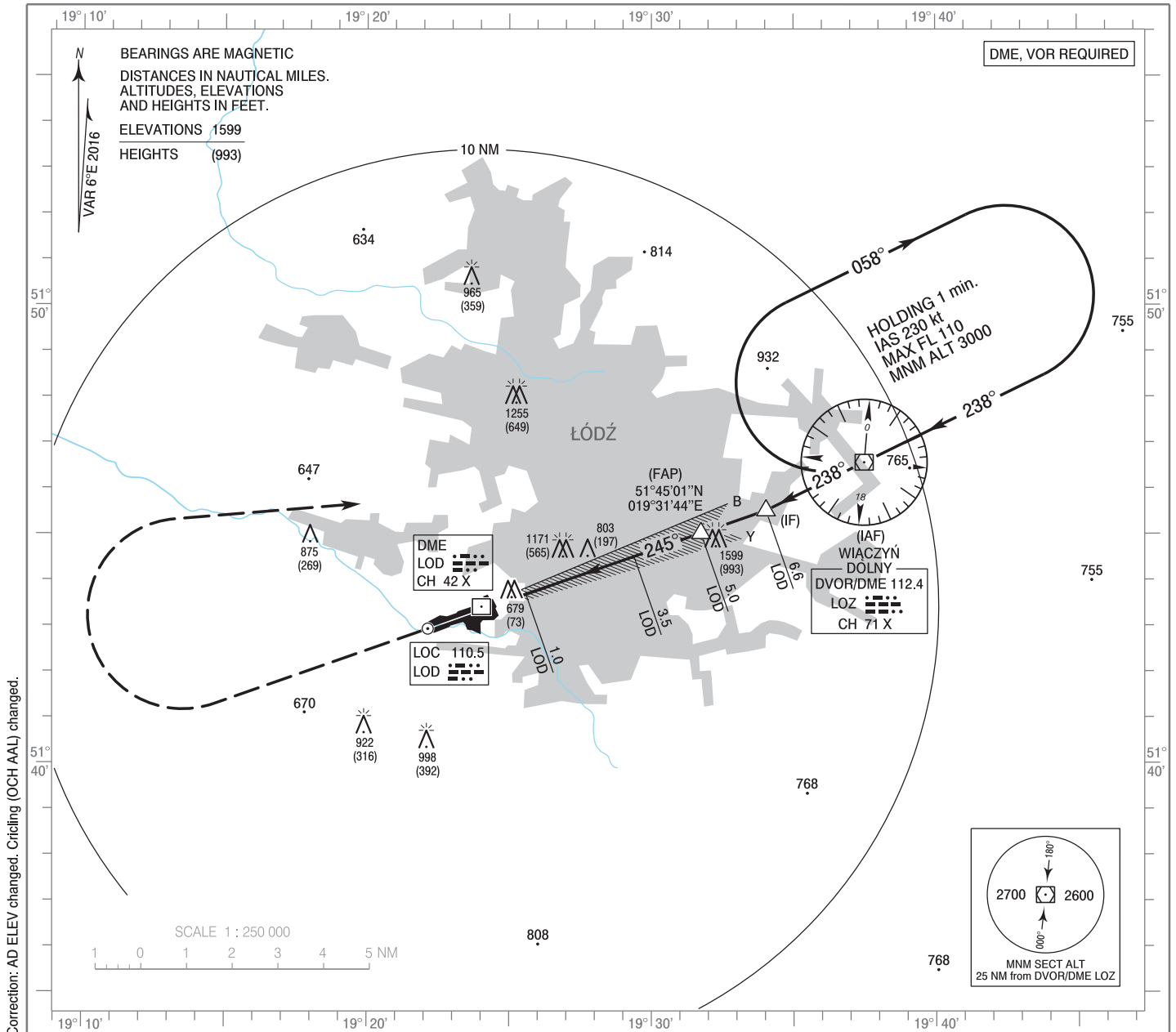


**INSTRUMENT
APPROACH
CHART - ICAO**

AERODROME ELEV 606 ft
THR RWY 25 ELEV 606 ft
HEIGHTS RELATED TO THR RWY 25

Lódź DELIVERY 120.005
Lódź TOWER 124.230
ATIS 135.680

**Lódź
ILS or LOC
RWY 25 (CAT A/B/C/D)**

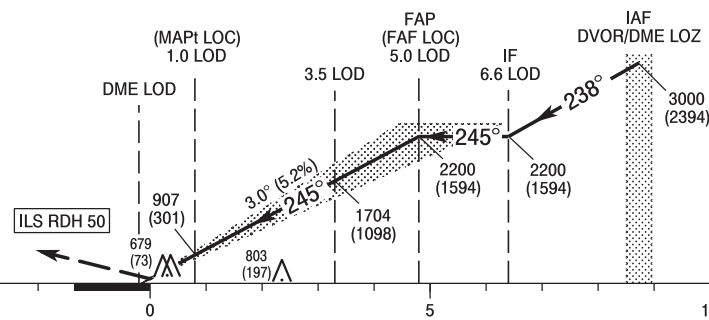


Correction: AD ELEVY changed. Circling (OCH AAL) changed.

MISSED APPROACH

Climb straight ahead to 1500 (894),
turn right to DVOR/DME LOZ
climbing to 3000 (2394).
Further instructions from ATC.
Turn limited to 220 kt IAS max.

TRANSITION ALTITUDE 6500



ELEV 606
(THR RWY 25)

SCALE 1 : 250 000

NM FROM THR RWY 25

OCA (OCH)					Distance FAF - MAPt 4.1 NM								
Cat. of ACFT		A	B	C	D	Speed	kt	80	100	120	140	160	180
		Straight - in	Cat. I	809 (203)	821 (215)	829 (223)	840 (234)	Time	min : s	3 : 02	2 : 26	2 : 02	1 : 44
LOC	1050 (444)		1050 (444)	1050 (444)	1050 (444)	Rate of descent	ft / min	430	540	640	750	850	960
Circling (OCH AAL)*		1110 (504)	1470 (864)	1570 (964)	2000 (1394)	Final approach distance/altitude (height)							
					Distance	5	4	3	2				
					Altitude (height)	2190 (1584)	1870 (1264)	1550 (944)	1230 (624)				

* ACFT cat C/D circling north of aerodrome only.

**INSTRUMENT
APPROACH
CHART - ICAO**

**Łódź
ILS or LOC
RWY 25 (CAT A/B/C/D)**

FIX / POINT	LATITUDE	LONGITUDE	FIX FORMATION	
IAF DVOR/DME LOZ	51°46'33.9"N	019°37'29.3"E		
IF	51°45'30.8"N	019°34'01.1"E	250.63° GEO (245° MAG) LOC LOD	6.56 NM DME LOD
FAP (FAF LOC)	51°45'01.2"N	019°31'44.3"E	250.63° GEO (245° MAG) LOC LOD	5.06 NM DME LOD
MAPt (LOC)	51°43'40.9"N	019°25'34.6"E	250.63° GEO (245° MAG) LOC LOD	1.00 NM DME LOD
Final approach descent angle: 3.00°				