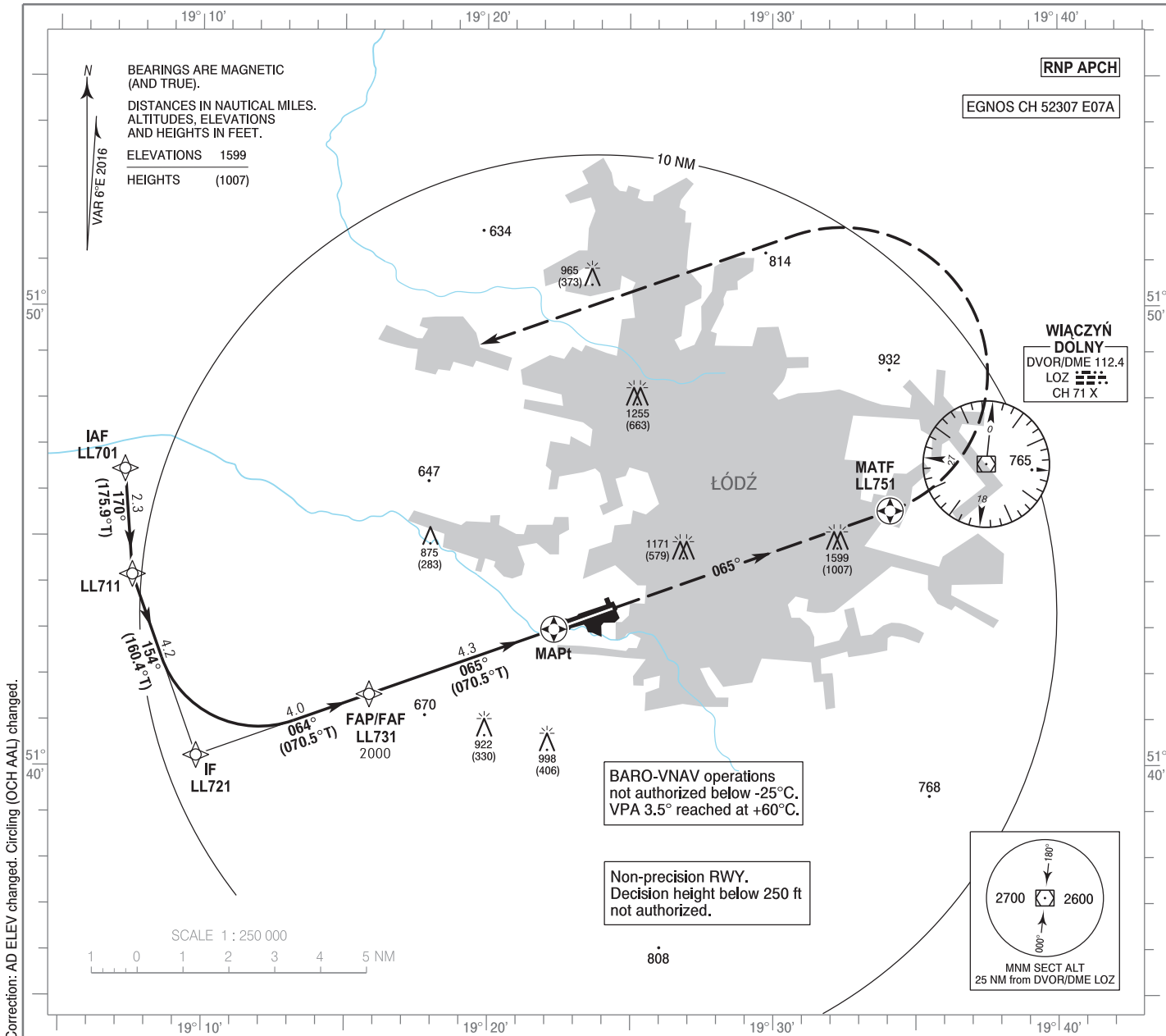


**INSTRUMENT
APPROACH
CHART - ICAO**

AERODROME ELEV 606 ft
THR RWY 07 ELEV 592 ft
HEIGHTS RELATED TO THR RWY 07

Łódź DELIVERY 120.005
Łódź TOWER 124.230
ATIS 135.680

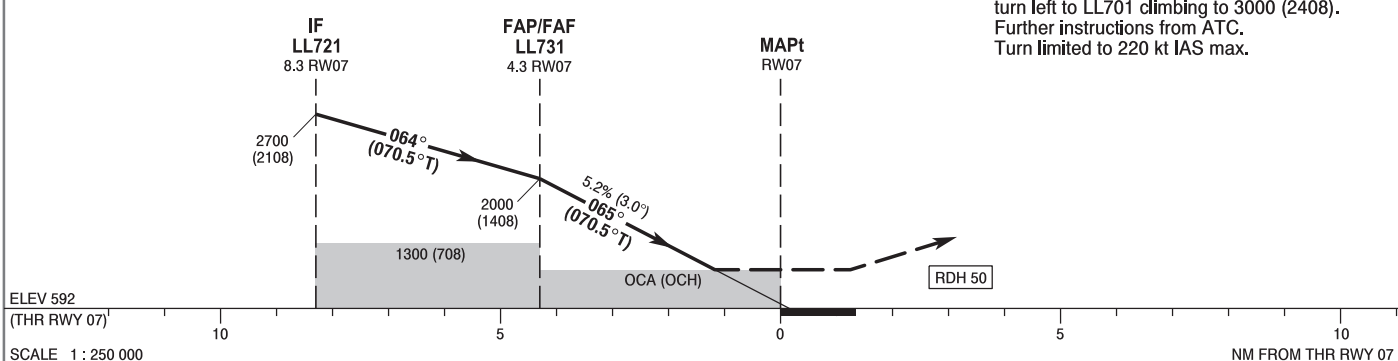
**Łódź
RNP
RWY 07 (CAT A/B/C/D)**



Correction: AD ELEV changed. Circling (OCH AAL) changed.

TRANSITION ALTITUDE 6500

MISSED APPROACH
Climb straight ahead on course 065° to LL751, turn left to LL701 climbing to 3000 (2408). Further instructions from ATC. Turn limited to 220 kt IAS max.



ELEV 592 (THR RWY 07) SCALE 1 : 250 000 NM FROM THR RWY 07

OCA (OCH)					Distance FAF - MAPt 4.3 NM								
Cat. of ACFT	A	B	C	D	Speed	kt	80	100	120	140	160	180	
Straight - in	LNAV	1020 (428)	1020 (428)	1020 (428)	1020 (428)	Time	min : s	3 : 12	2 : 34	2 : 08	1 : 50	1 : 36	1 : 25
	LNAV / VNAV	870 (278)	880 (288)	890 (298)	900 (308)	Rate of descent	ft / min	420	530	630	740	840	950
	LPV	838 (246)	850 (258)	858 (266)	869 (277)		Final approach distance/altitude (height)						
Circling (OCH AAL)*	1110 (504)	1470 (864)	1570 (964)	2000 (1394)	Distance		4	3	2				
* ACFT cat C/D circling north of aerodrome only.					Altitude (height)		1910 (1318)	1590 (998)	1270 (678)				

STRONA WOLNA

INTENTIONALLY LEFT BLANK

Łódź
RNP
RWY 07 (CAT A/B/C/D)

EPLL RNP RWY 07 FROM LL701

SEQUENCE NUMBER	PATH TERMINATOR	WAYPOINT IDENTIFIER	FLY - OVER	COURSE/TRACK °M (°T)	DISTANCE (NM)	TURN DIRECTION	ALTITUDE	SPEED (kt)	VPA/TCH	NAV SPEC
001	IF	LL701	-	-	-	-	+4000 ft	-	-	RNP APCH
002	TF	LL711	-	170 (175.93)	2.30	-	-	-	-	RNP APCH
003	TF	LL721	-	154 (160.44)	4.18	L	+2700 ft	-210	-	RNP APCH
004	TF	LL731	-	064 (070.47)	4.00	-	+2000 ft	-	-	RNP APCH
005	TF	RW07	Y	065 (070.54)	4.27	-	@642 ft	-	-3.0°/50	RNP APCH
006	CF	LL751	Y	065 (070.53)	7.76	-	-	-220	-	RNP APCH
007	DF	LL701	-	-	-	L	+3000 ft	-220	-	RNP APCH

WAYPOINT IDENTIFIER	COORDINATES	
LL701 (IAF)	51°46'27.1"N	019°07'17.8"E
LL711	51°44'09.3"N	019°07'33.6"E
LL721 (IF)	51°40'13.5"N	019°09'48.4"E
LL731 (FAP/FAF)	51°41'33.4"N	019°15'51.9"E
RW07 (MAPt)	51°42'58.4"N	019°22'19.9"E
LL751 (MATF)	51°45'32.9"N	019°34'06.8"E

SBAS FAS Data Block Coding Data

EPLL RNP RWY 07	
Input Data	
Parameters	Values
Operation Type:	0
SBAS Provider:	1
Airport Identifier:	EPLL
Runway:	07
Runway Direction:	0
Approach Performance Designator:	0
Route Indicator:	
Reference Path Data Selector:	0
Reference Path Identifier:	E07A
LTP/FTP Latitude:	514258.4000N
LTP/FTP Longitude:	0192219.8800E
LTP/FTP Ellipsoidal Height (metres):	214.3
FPAP Latitude:	514325.2200N
Delta FPAP Latitude (seconds):	26.8200
FPAP Longitude:	0192422.7400E
Delta FPAP Longitude (seconds):	122.8600
Threshold Crossing Height:	50.0
TCH Units Selector:	0
Glidepath Angle (degrees):	3.00
Course Width (metres):	105.00
Length Offset (metres):	0
HAL (metres):	40.0
VAL (metres):	35.0

Output Data	
Data Block	10 0C 0C 10 05 07 00 00 01 37 30 05 C0 B6 31 16 D0 4A 50 08 5F 1C 88 D1 00 D8 BF 03 F4 01 2C 01 64 00 C8 AF 89 34 11 D0
Calculated CRC Value	893411D0

Required Additional Data (not CRC wrapped)	
ICAO Code	LL
LTP/FTP Orthometric Height (metres)	180.4