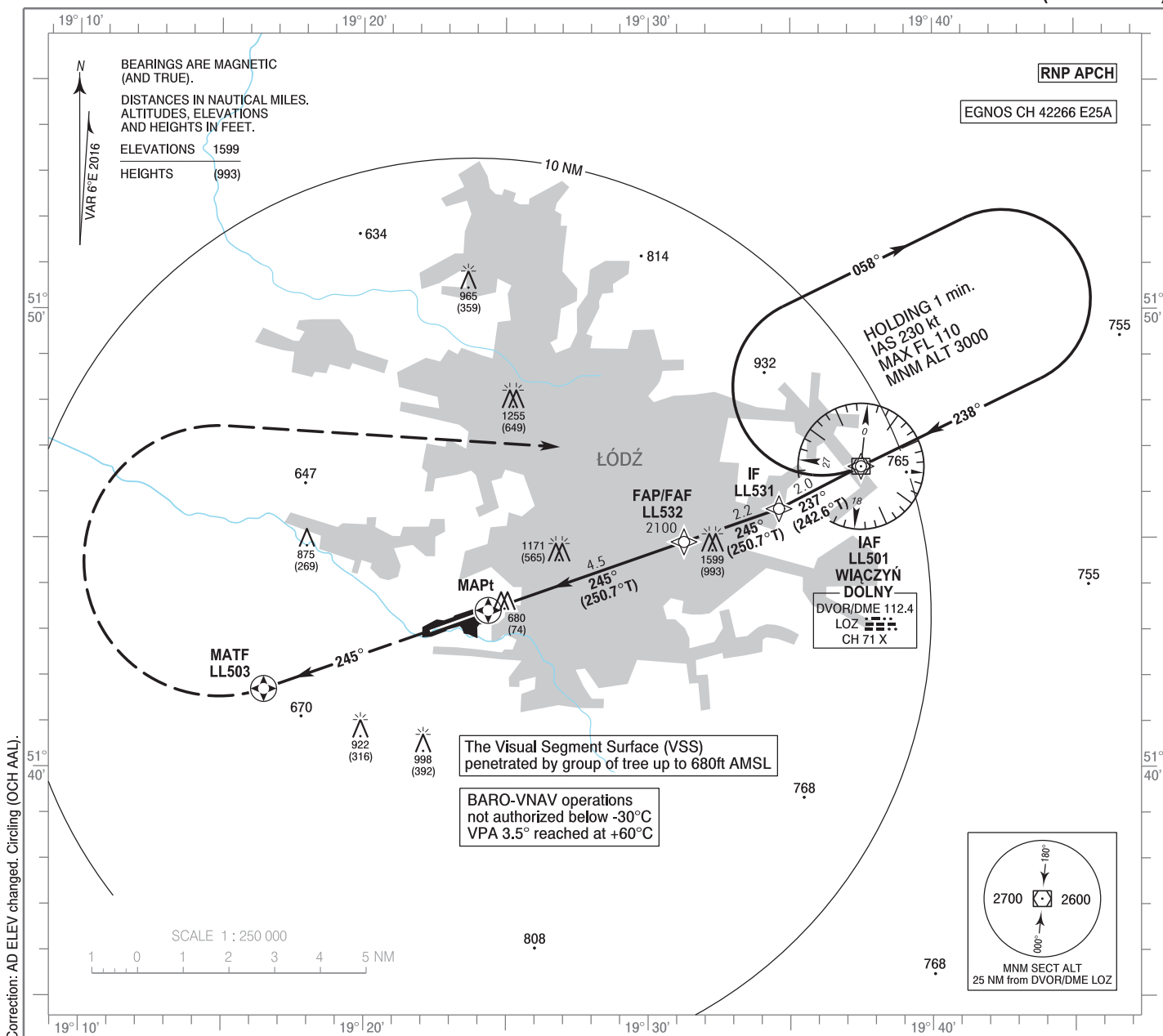


**INSTRUMENT
APPROACH
CHART - ICAO**

AERODROME ELEV 606 ft
THR RWY 25 ELEV 606 ft
HEIGHTS RELATED TO THR RWY 25

Lódź DELIVERY 120.005
Lódź TOWER 124.230
ATIS 135.680

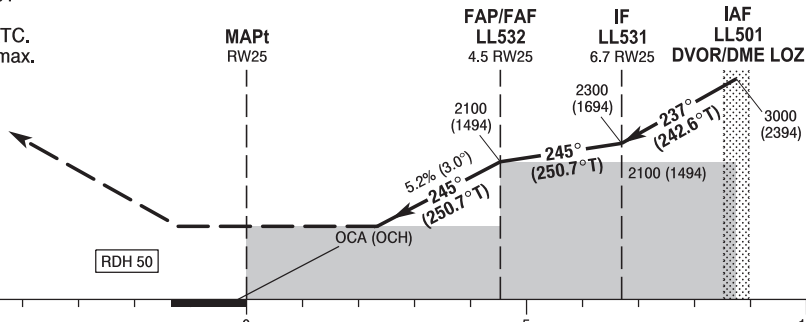
**Lódź
RNP
RWY 25 (CAT A/B/C/D)**



MISSED APPROACH

Climb straight ahead on course 245° to LL503, turn right to LL501 climbing to 3000 (2394). Further instructions from ATC. Turn limited to 220 kt IAS max.

TRANSITION ALTITUDE 6500



SCALE 1 : 250 000

NM FROM THR RWY 25

OCA (OCH)					Distance FAF - MAPt 4.5 NM								
Cat. of ACFT		A	B	C	D	Speed	kt	80	100	120	140	160	180
		Straight - in	LNAV	1400 (794)	1400 (794)	1400 (794)	1400 (794)	Time	min : s	3 : 25	2 : 44	2 : 17	1 : 57
LNAV / VNAV	1310 (704)		1320 (714)	1330 (724)	1340 (734)	Rate of descent	ft / min	420	530	630	740	840	950
LPV	842 (236)		854 (248)	862 (256)	873 (267)								
Circling (OCH AAL)*		1400 (794)	1470 (864)	1570 (964)	2000 (1394)	Distance		4			3		
* ACFT cat C/D circling north of aerodrome only.						Altitude (height)		1930 (1324)			1610 (1004)		

STRONA WOLNA

INTENTIONALLY LEFT BLANK

Łódź
RNP
RWY 25 (CAT A/B/C/D)

EPLL RNP RWY 25 FROM LL501

SEQUENCE NUMBER	PATH TERMINATOR	WAYPOINT IDENTIFIER	FLY - OVER	COURSE/TRACK °M (°T)	DISTANCE (NM)	TURN DIRECTION	ALTITUDE	SPEED (kt)	VPA/TCH	NAV SPEC
001	IF	LL501	-	-	-	-	+3000 ft	-	-	RNP APCH
002	TF	LL531	-	237 (242.64)	2.02	-	-	-	-	RNP APCH
003	TF	LL532	-	245 (250.75)	2.20	-	+2100 ft	-	-	RNP APCH
004	TF	RW25	Y	245 (250.75)	4.53	-	@656 ft	-	-3.0°/50	RNP APCH
005	CF	LL503	Y	245 (250.75)	5.20	-	-	-220	-	RNP APCH
006	DF	LL501	-	-	-	R	+3000 ft	-220	-	RNP APCH

WAYPOINT IDENTIFIER	COORDINATES	
LL501 (IAF)	51°46'33.9"N	019°37'29.3"E
LL531 (IF)	51°45'38.4"N	019°34'36.3"E
LL532 (FAP/FAF)	51°44'55.0"N	019°31'15.7"E
RW25 (MAPt)	51°43'25.2"N	019°24'22.8"E
LL503 (MATF)	51°41'42.3"N	019°16'29.5"E

SBAS FAS Data Block Coding Data

EPLL RNP RWY 25	
Input Data	
Parameters	Values
Operation Type:	0
SBAS Provider:	1
Airport Identifier:	EPLL
Runway:	25
Runway Direction:	0
Approach Performance Designator:	0
Route Indicator:	
Reference Path Data Selector:	0
Reference Path Identifier:	E25A
LTP/FTP Latitude:	514325.2100N
LTP/FTP Longitude:	0192422.7500E
LTP/FTP Ellipsoidal Height (metres):	218.6
FPAP Latitude:	514258.4000N
Delta FPAP Latitude (seconds):	-26.8100
FPAP Longitude:	0192219.8800E
Delta FPAP Longitude (seconds):	-122.8700
Threshold Crossing Height:	50.0
TCH Units Selector:	0
Glidepath Angle (degrees):	3.00
Course Width (metres):	105.00
Length Offset (metres):	0
HAL (metres):	40.0
VAL (metres):	35.0

Output Data	
Data Block	10 0C 0C 10 05 19 00 00 01 35 32 05 34 88 32 16 BC 0A 54 08 8A 1C 8C 2E FF 14 40 FC F4 01 2C 01 64 00 C8 AF B3 47 3F F5
Calculated CRC Value	B3473FF5

Required Additional Data (not CRC wrapped)	
ICAO Code	LL
LTP/FTP Orthometric Height (metres)	184.8