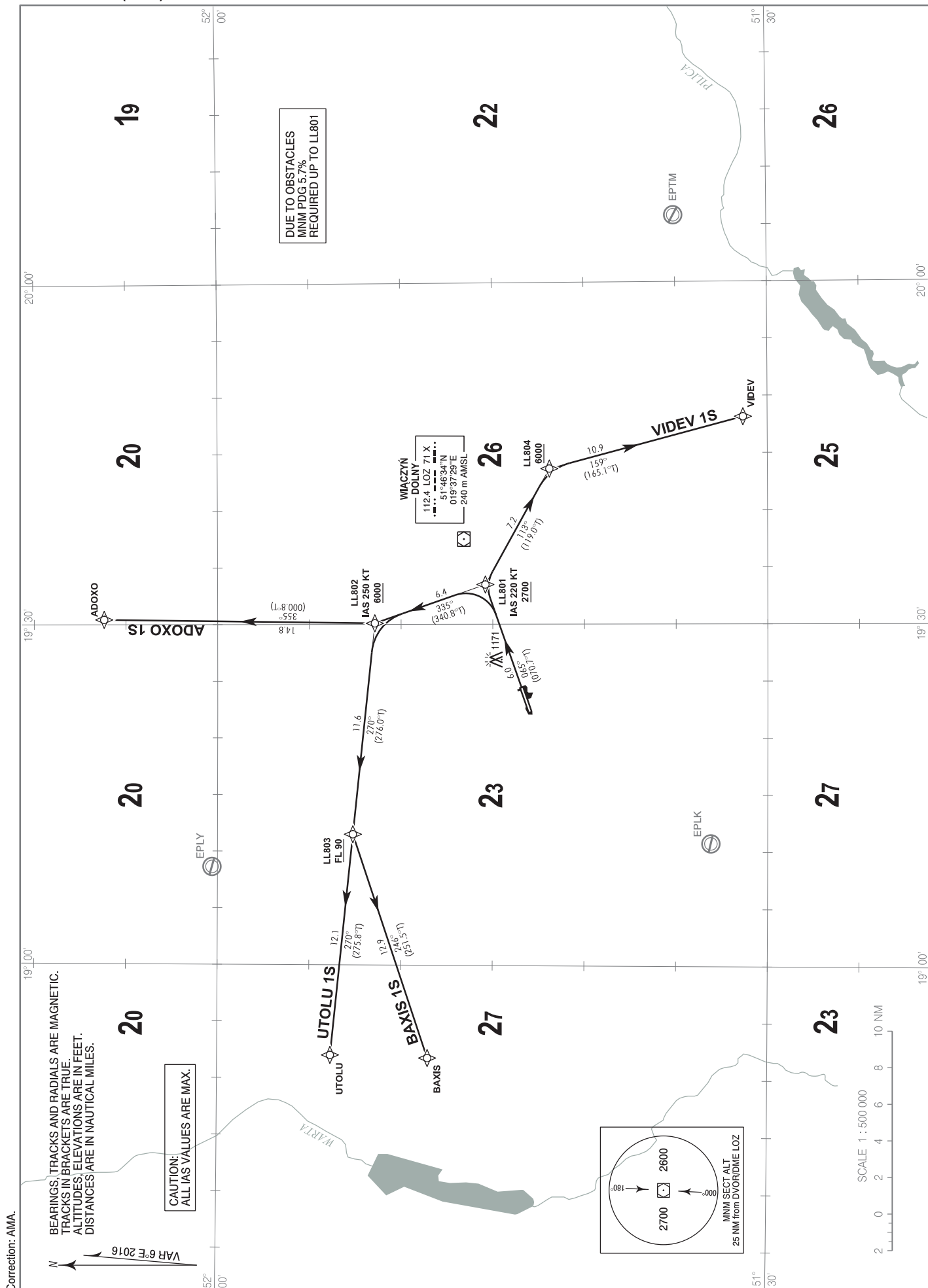


RNP 1 (GNSS)  
STANDARD DEPARTURE CHART  
INSTRUMENT (SID) - ICAO

TRANSITION ALTITUDE 6500

Łódź DELIVERY	120.005
Łódź TOWER	124.230
ATIS	135.680

Łódź  
RWY 07



**RNP 1 (GNSS)  
STANDARD DEPARTURE CHART  
INSTRUMENT (SID) - ICAO**

**Łódź  
RWY 07**

**UTOLU 1S**

SEQUENCE NUMBER	PATH TERMINATOR	WAYPOINT IDENTIFIER	FLY - OVER	COURSE/TRACK °M (°T)	DISTANCE (NM)	TURN DIRECTION	ALTITUDE	SPEED (kt)	NAV SPEC
001	CF	LL801	-	065 (070.7)	6.00	-	+2700 ft	-220	RNP 1
002	TF	LL802	-	335 (340.8)	6.40	-	+6000 ft	-250	RNP 1
003	TF	LL803	-	270 (276.0)	11.58	-	+FL90	-	RNP 1
004	TF	UTOLU	-	270 (275.8)	12.11	-	-	-	RNP 1

**ADOXO 1S**

SEQUENCE NUMBER	PATH TERMINATOR	WAYPOINT IDENTIFIER	FLY - OVER	COURSE/TRACK °M (°T)	DISTANCE (NM)	TURN DIRECTION	ALTITUDE	SPEED (kt)	NAV SPEC
001	CF	LL801	-	065 (070.7)	6.00	-	+2700 ft	-220	RNP 1
002	TF	LL802	-	335 (340.8)	6.40	-	+6000 ft	-250	RNP 1
003	TF	ADOXO	-	355 (000.8)	14.78	-	-	-	RNP 1

**VIDEV 1S**

SEQUENCE NUMBER	PATH TERMINATOR	WAYPOINT IDENTIFIER	FLY - OVER	COURSE/TRACK °M (°T)	DISTANCE (NM)	TURN DIRECTION	ALTITUDE	SPEED (kt)	NAV SPEC
001	CF	LL801	-	065 (070.7)	6.00	-	+2700 ft	-220	RNP 1
002	TF	LL804	-	113 (119.0)	7.23	-	+6000 ft	-	RNP 1
003	TF	VIDEV	-	159 (165.1)	10.95	-	-	-	RNP 1

**BAXIS 1S**

SEQUENCE NUMBER	PATH TERMINATOR	WAYPOINT IDENTIFIER	FLY - OVER	COURSE/TRACK °M (°T)	DISTANCE (NM)	TURN DIRECTION	ALTITUDE	SPEED (kt)	NAV SPEC
001	CF	LL801	-	065 (070.7)	6.00	-	+2700 ft	-220	RNP 1
002	TF	LL802	-	335 (340.8)	6.40	-	+6000 ft	-250	RNP 1
003	TF	LL803	-	270 (276.0)	11.58	-	+FL90	-	RNP 1
004	TF	BAXIS	-	246 (251.5)	12.88	-	-	-	RNP 1

WAYPOINT IDENTIFIER	COORDINATES	
UTOLU	51°53'49.0" N	018°52'03.0" E
ADOXO	52°06'11.2" N	019°30'26.0" E
VIDEV	51°31'19.4" N	019°48'09.1" E
BAXIS	51°48'31.0" N	018°51'50.0" E
LL801	51°45'24.0" N	019°33'29.5" E
LL802	51°51'25.9" N	019°30'05.6" E
LL803	51°52'37.4" N	019°11'30.6" E
LL804	51°41'53.5" N	019°43'39.4" E