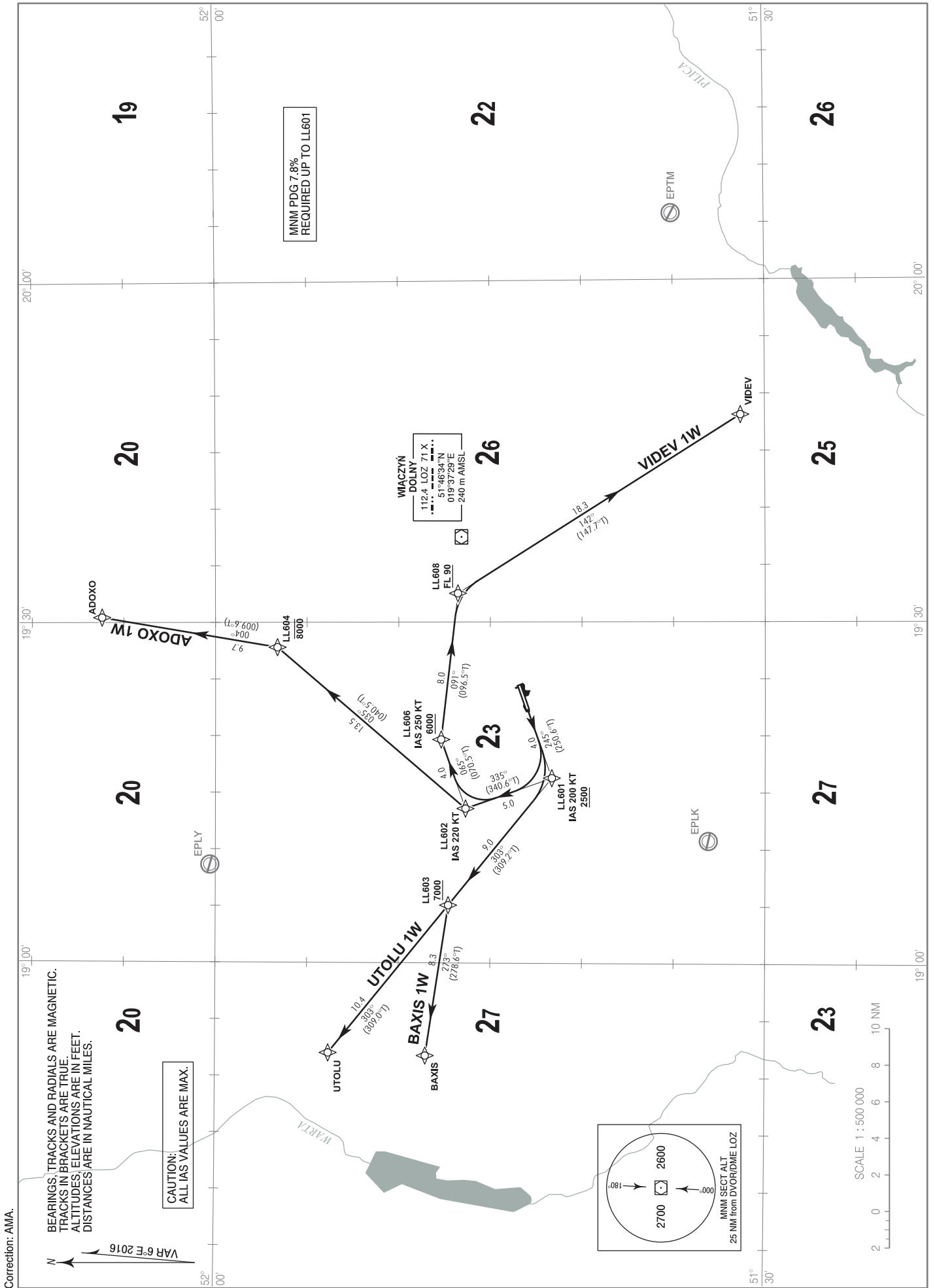


RNP 1 (GNSS)
STANDARD DEPARTURE CHART
INSTRUMENT (SID) - ICAO

TRANSITION ALTITUDE 6500

Lódź DELIVERY	120.005
Lódź TOWER	124.230
ATIS	135.680

Lódź
RWY 25



**RNP 1 (GNSS)
STANDARD DEPARTURE CHART
INSTRUMENT (SID) - ICAO**

**Łódź
RWY 25**

UTOLU 1W

SEQUENCE NUMBER	PATH TERMINATOR	WAYPOINT IDENTIFIER	FLY - OVER	COURSE/TRACK °M (°T)	DISTANCE (NM)	TURN DIRECTION	ALTITUDE	SPEED (kt)	NAV SPEC
001	CF	LL601	-	245 (250.6)	4.00	-	+2500 ft	-200	RNP 1
002	TF	LL603	-	303 (309.2)	8.96	-	+7000 ft	-	RNP 1
003	TF	UTOLU	-	303 (309.0)	10.39	-	-	-	RNP 1

ADOXO 1W

SEQUENCE NUMBER	PATH TERMINATOR	WAYPOINT IDENTIFIER	FLY - OVER	COURSE/TRACK °M (°T)	DISTANCE (NM)	TURN DIRECTION	ALTITUDE	SPEED (kt)	NAV SPEC
001	CF	LL601	-	245 (250.6)	4.00	-	+2500 ft	-200	RNP 1
002	TF	LL602	-	335 (340.6)	5.00	-	-	-220	RNP 1
003	TF	LL604	-	035 (040.5)	13.54	-	-8000 ft	-	RNP 1
004	TF	ADOXO	-	004 (009.6)	9.72	-	-	-	RNP 1

VIDEV 1W

SEQUENCE NUMBER	PATH TERMINATOR	WAYPOINT IDENTIFIER	FLY - OVER	COURSE/TRACK °M (°T)	DISTANCE (NM)	TURN DIRECTION	ALTITUDE	SPEED (kt)	NAV SPEC
001	CF	LL601	-	245 (250.6)	4.00	-	+2500 ft	-200	RNP 1
002	TF	LL602	-	335 (340.6)	5.00	-	-	-220	RNP 1
003	TF	LL606	-	065 (070.5)	4.00	-	+6000 ft	-250	RNP 1
004	TF	LL608	-	090 (096.5)	8.04	-	+FL90	-	RNP 1
005	TF	VIDEV	-	142 (147.7)	18.27	-	-	-	RNP 1

BAXIS 1W

SEQUENCE NUMBER	PATH TERMINATOR	WAYPOINT IDENTIFIER	FLY - OVER	COURSE/TRACK °M (°T)	DISTANCE (NM)	TURN DIRECTION	ALTITUDE	SPEED (kt)	NAV SPEC
001	CF	LL601	-	245 (250.6)	4.00	-	+2500 ft	-200	RNP 1
002	TF	LL603	-	303 (309.2)	8.96	-	+7000 ft	-	RNP 1
003	TF	BAXIS	-	273 (278.6)	8.32	-	-	-	RNP 1

WAYPOINT IDENTIFIER	COORDINATES	
UTOLU	51°53'49.0" N	018°52'03.0" E
ADOXO	52°06'11.2" N	019°30'26.0" E
VIDEV	51°31'19.4" N	019°48'09.1" E
BAXIS	51°48'31.0" N	018°51'50.0" E
LL601	51°41'38.7" N	019°16'16.0" E
LL602	51°46'21.3" N	019°13'35.2" E
LL603	51°47'17.4" N	019°05'05.0" E
LL604	51°56'37.0" N	019°27'47.8" E
LL606	51°47'41.1" N	019°19'39.6" E
LL608	51°46'45.9" N	019°32'31.7" E