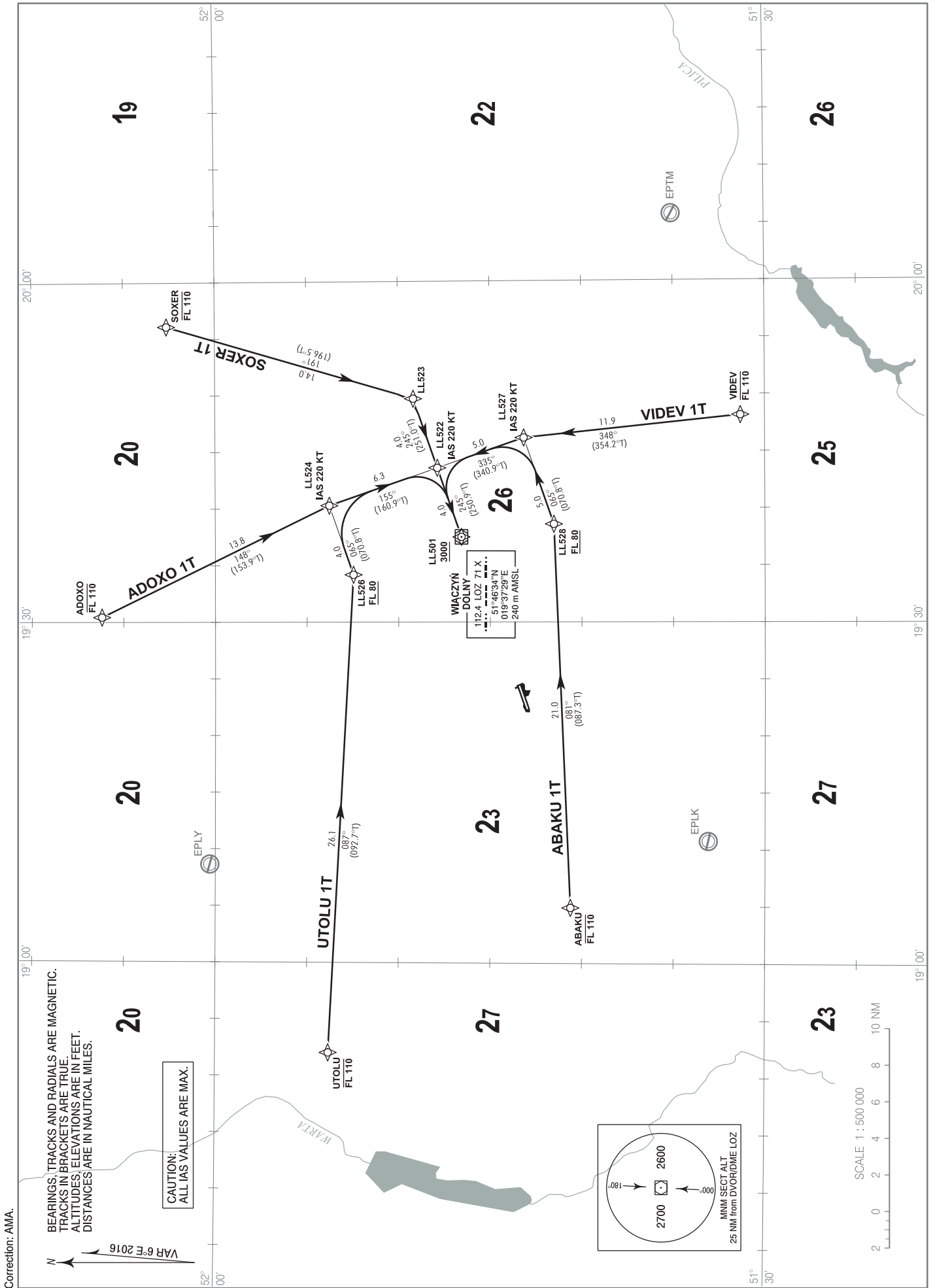


RNP 1 (GNSS)
STANDARD ARRIVAL CHART
INSTRUMENT (STAR) - ICAO

TRANSITION ALTITUDE 6500

Łódź DELIVERY	120.005
Łódź TOWER	124.230
ATIS	135.680

Łódź
RWY 25



**RNP 1 (GNSS)
STANDARD ARRIVAL CHART
INSTRUMENT (STAR) - ICAO**

**Łódź
RWY 25**

UTOLU 1T

SEQUENCE NUMBER	PATH TERMINATOR	WAYPOINT IDENTIFIER	COURSE / TRACK °M (°T)	DISTANCE (NM)	ALTITUDE	SPEED (kt)	NAV SPEC
001	IF	UTOLU	-	-	-FL110	-	RNP 1
002	TF	LL526	087 (092.7)	26.14	+FL80	-	RNP 1
003	TF	LL524	065 (070.8)	4.00	-	-220	RNP 1
004	TF	LL522	155 (160.9)	6.25	-	-220	RNP 1
005	TF	LL501	245 (250.9)	4.00	+3000 ft	-	RNP 1

ADOXO 1T

SEQUENCE NUMBER	PATH TERMINATOR	WAYPOINT IDENTIFIER	COURSE / TRACK °M (°T)	DISTANCE (NM)	ALTITUDE	SPEED (kt)	NAV SPEC
001	IF	ADOXO	-	-	-FL110	-	RNP 1
002	TF	LL524	148 (153.9)	13.84	-	-220	RNP 1
003	TF	LL522	155 (160.9)	6.25	-	-220	RNP 1
004	TF	LL501	245 (250.9)	4.00	+3000 ft	-	RNP 1

SOXER 1T

SEQUENCE NUMBER	PATH TERMINATOR	WAYPOINT IDENTIFIER	COURSE / TRACK °M (°T)	DISTANCE (NM)	ALTITUDE	SPEED (kt)	NAV SPEC
001	IF	SOXER	-	-	-FL110	-	RNP 1
002	TF	LL523	191 (196.5)	14.05	-	-	RNP 1
003	TF	LL522	245 (251.0)	4.00	-	-220	RNP 1
004	TF	LL501	245 (250.9)	4.00	+3000 ft	-	RNP 1

VIDEV 1T

SEQUENCE NUMBER	PATH TERMINATOR	WAYPOINT IDENTIFIER	COURSE / TRACK °M (°T)	DISTANCE (NM)	ALTITUDE	SPEED (kt)	NAV SPEC
001	IF	VIDEV	-	-	-FL110	-	RNP 1
002	TF	LL527	348 (354.2)	11.91	-	-220	RNP 1
003	TF	LL522	335 (340.9)	5.00	-	-220	RNP 1
004	TF	LL501	245 (250.9)	4.00	+3000 ft	-	RNP 1

ABAKU 1T

SEQUENCE NUMBER	PATH TERMINATOR	WAYPOINT IDENTIFIER	COURSE / TRACK °M (°T)	DISTANCE (NM)	ALTITUDE	SPEED (kt)	NAV SPEC
001	IF	ABAKU	-	-	-FL110	-	RNP 1
002	TF	LL528	081 (087.3)	21.01	+FL80	-	RNP 1
003	TF	LL527	065 (070.8)	5.00	-	-220	RNP 1
004	TF	LL522	335 (340.9)	5.00	-	-220	RNP 1
005	TF	LL501	245 (250.9)	4.00	+3000 ft	-	RNP 1

WAYPOINT IDENTIFIER	COORDINATES	
UTOLU	51°53'49.0"N	018°52'03.0"E
ADOXO	52°06'11.2"N	019°30'26.0"E
SOXER	52°02'37.8"N	019°56'05.9"E
VIDEV	51°31'19.4"N	019°48'09.1"E
ABAKU	52°40'37"N	019°04'53"E
LL528	51°41'31.2"N	019°38'36.6"E
LL527	51°43'09.3"N	019°46'12.3"E
LL526	51°52'27.7"N	019°34'10.6"E
LL524	51°53'46.4"N	019°40'16.5"E
LL523	51°49'10.7"N	019°49'40.1"E
LL522	51°47'52.5"N	019°43'34.5"E
LL501	51°46'33.9"N	019°37'29.3"E