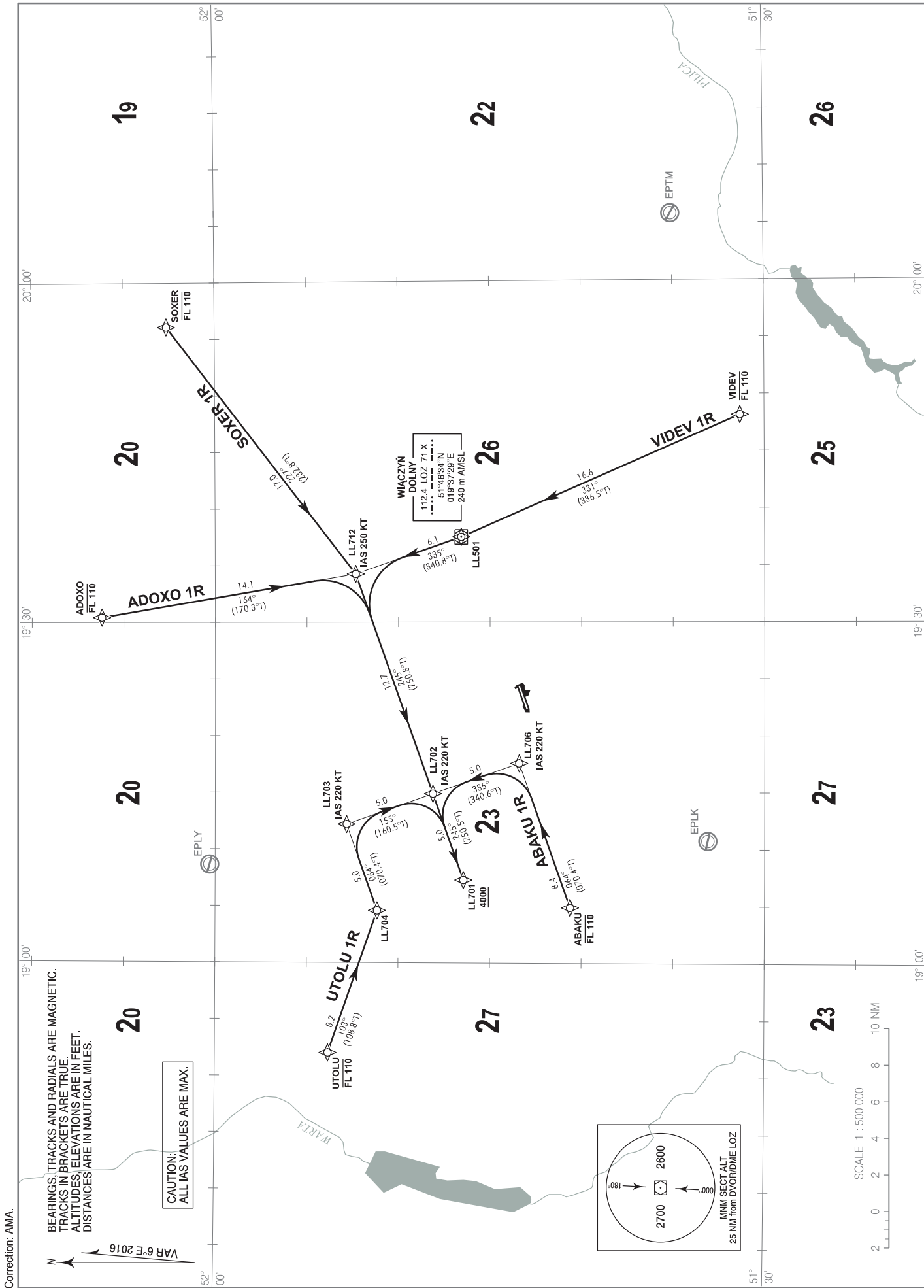


RNP 1 (GNSS)  
STANDARD ARRIVAL CHART  
INSTRUMENT ( STAR ) - ICAO

TRANSITION ALTITUDE 6500

Lódź DELIVERY	120.005
Lódź TOWER	124.230
ATIS	135.680

Łódź  
RWY 07



**RNP 1 (GNSS)  
STANDARD ARRIVAL CHART  
INSTRUMENT (STAR) - ICAO**

**Łódź  
RWY 07**

**UTOLU 1R**

SEQUENCE NUMBER	PATH TERMINATOR	WAYPOINT IDENTIFIER	COURSE / TRACK °M (°T)	DISTANCE (NM)	ALTITUDE	SPEED (kt)	NAV SPEC
001	IF	UTOLU	-	-	-FL110	-	RNP 1
002	TF	LL704	103 (108.8)	8.22	-	-	RNP 1
003	TF	LL703	064 (070.4)	5.00	-	-220	RNP 1
004	TF	LL702	155 (160.5)	5.00	-	-220	RNP 1
005	TF	LL701	245 (250.5)	5.00	+4000 ft	-	RNP 1

**ADOXO 1R**

SEQUENCE NUMBER	PATH TERMINATOR	WAYPOINT IDENTIFIER	COURSE / TRACK °M (°T)	DISTANCE (NM)	ALTITUDE	SPEED (kt)	NAV SPEC
001	IF	ADOXO	-	-	-FL110	-	RNP 1
002	TF	LL712	164 (170.3)	14.07	-	-250	RNP 1
003	TF	LL702	245 (250.8)	12.73	-	-220	RNP 1
004	TF	LL701	245 (250.5)	5.00	+4000 ft	-	RNP 1

**SOXER 1R**

SEQUENCE NUMBER	PATH TERMINATOR	WAYPOINT IDENTIFIER	COURSE / TRACK °M (°T)	DISTANCE (NM)	ALTITUDE	SPEED (kt)	NAV SPEC
001	IF	SOXER	-	-	-FL110	-	RNP 1
002	TF	LL712	227 (232.8)	17.00	-	-250	RNP 1
003	TF	LL702	245 (250.8)	12.73	-	-220	RNP 1
004	TF	LL701	245 (250.5)	5.00	+4000 ft	-	RNP 1

**VIDEV 1R**

SEQUENCE NUMBER	PATH TERMINATOR	WAYPOINT IDENTIFIER	COURSE / TRACK °M (°T)	DISTANCE (NM)	ALTITUDE	SPEED (kt)	NAV SPEC
001	IF	VIDEV	-	-	-FL110	-	RNP 1
002	TF	LL501	331 (336.5)	16.64	-	-	RNP 1
003	TF	LL712	335 (340.8)	6.11	-	-250	RNP 1
004	TF	LL702	245 (250.8)	12.73	-	-220	RNP 1
005	TF	LL701	245 (250.5)	5.00	+4000 ft	-	RNP 1

**ABAKU 1R**

SEQUENCE NUMBER	PATH TERMINATOR	WAYPOINT IDENTIFIER	COURSE / TRACK °M (°T)	DISTANCE (NM)	ALTITUDE	SPEED (kt)	NAV SPEC
001	IF	ABAKU	-	-	-FL110	-	RNP 1
002	TF	LL706	064 (070.4)	8.37	-	-220	RNP 1
003	TF	LL702	335 (340.6)	5.00	-	-220	RNP 1
004	TF	LL701	245 (250.5)	5.00	+4000 ft	-	RNP 1

WAYPOINT IDENTIFIER	COORDINATES	
UTOLU	51°53'49.0"N	018°52'03.0"E
ADOXO	52°06'11.2"N	019°30'26.0"E
SOXER	52°02'37.8"N	019°56'05.9"E
VIDEV	51°31'19.4"N	019°48'09.1"E
ABAKU	51°40'37"N	019°04'53"E
LL701	51°46'27.1"N	019°07'17.8"E
LL702	51°48'07.2"N	019°14'53.2"E
LL703	51°52'49.7"N	019°12'11.8"E
LL704	51°51'09.4"N	019°04'35.8"E
LL706	51°43'24.6"N	019°17'34.0"E
LL712	51°52'19.8"N	019°34'15.0"E
LL501	51°46'33.9"N	019°37'29.3"E