

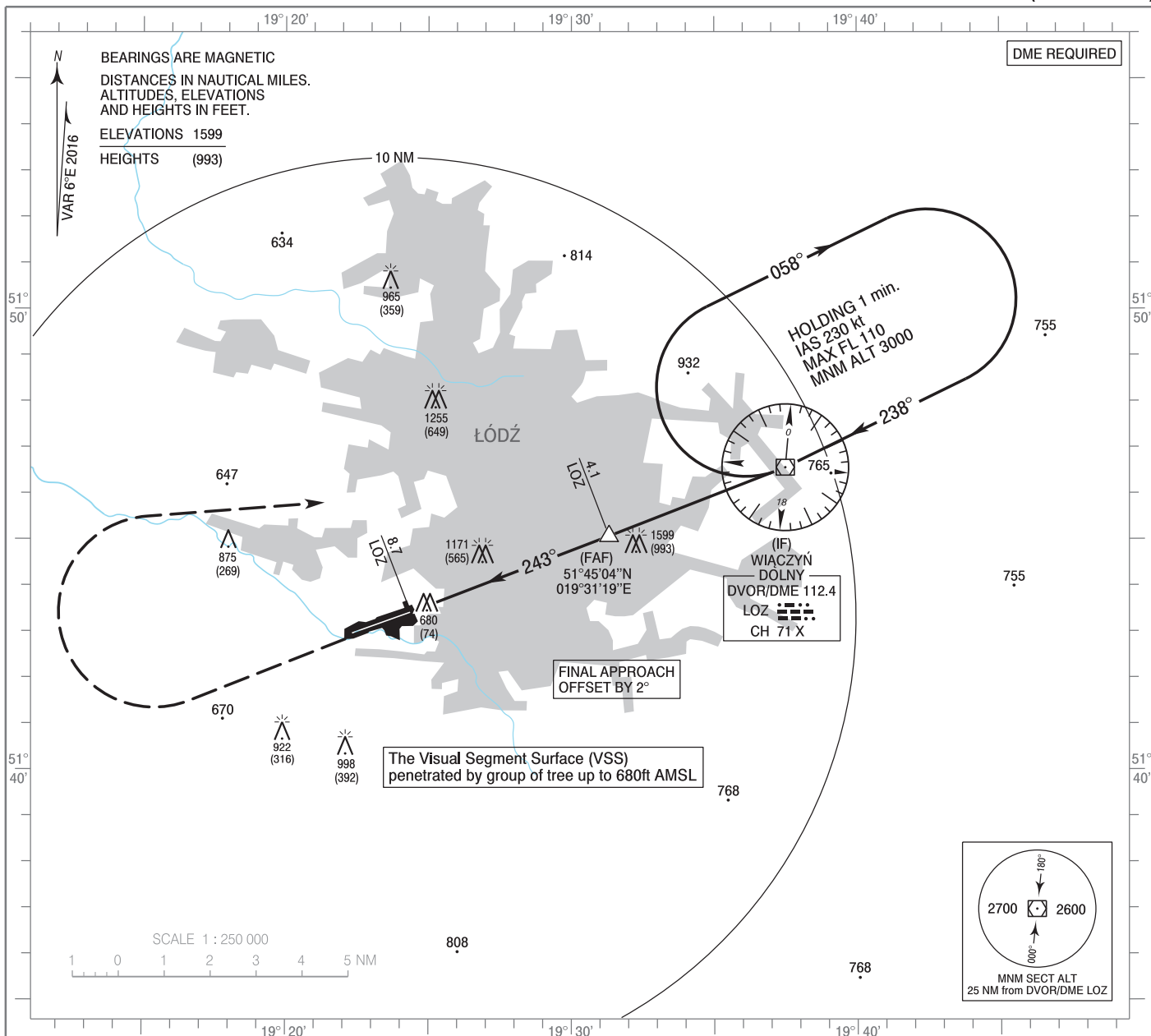
**INSTRUMENT
APPROACH
CHART - ICAO**

AERODROME ELEV 606 ft
THR RWY 25 ELEV 606 ft
HEIGHTS RELATED TO AD ELEV

Łódź DELIVERY 120.005
Łódź TOWER 124.230
ATIS 135.680

**Łódź
VOR
RWY 25 (CAT A/B/C/D)**

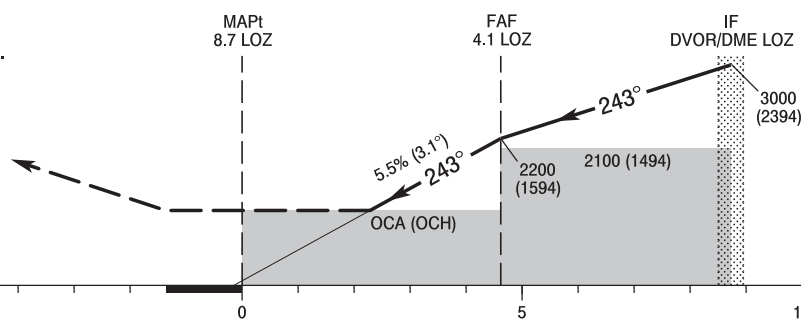
Correction: AD ELEVY changed. Obstacles heights changed. Heights in MA, OCA (OCH), circling, profile changed. Final approach distance/altitude (height) changed.



MISSED APPROACH

Climb straight ahead to 2000 (1394),
turn right to DVOR/DME LOZ
climbing to 3000 (2394).
Further instructions from ATC.
Turn limited to 185 kt IAS max.

TRANSITION ALTITUDE 6500



SCALE 1 : 250 000

| OCA (OCH) | | | | | Distance FAF - MAPt 4.6 NM | | | | | | | |
|--|------------|------------|------------|-------------|---|----------|-------------|--------|------------|--------|--------|--------|
| Cat. of ACFT | A | B | C | D | Speed | kt | 80 | 100 | 120 | 140 | 160 | 180 |
| Straight - in | 1420 (814) | 1420 (814) | 1420 (814) | 1420 (814) | Time | min : s | 3 : 28 | 2 : 46 | 2 : 19 | 1 : 59 | 1 : 44 | 1 : 32 |
| | | | | | Rate of descent | ft / min | 450 | 560 | 670 | 780 | 900 | 1010 |
| | | | | | Final approach distance/altitude (height) | | | | | | | |
| Circling * | 1420 (814) | 1470 (864) | 1570 (964) | 2000 (1394) | Distance | | 5 | | 6 | | | |
| * ACFT cat C/D circling north of aerodrome only. | | | | | Altitude (height) | | 1900 (1294) | | 1570 (964) | | | |

**INSTRUMENT
APPROACH
CHART - ICAO**

**Łódź
VOR
RWY 25 (CAT A/B/C/D)**

| FIX / POINT | LATITUDE | LONGITUDE | FIX FORMATION | |
|-------------------------------------|--------------|---------------|---------------------------------------|--------------------|
| IF DVOR/DME LOZ | 51°46'33.9"N | 019°37'29.3"E | | |
| FAF | 51°45'04.5"N | 019°31'19.0"E | 248.78° GEO (243° MAG) DVOR LOZ | 4.11 NM DME LOZ |
| MAPt | 51°43'23.7"N | 019°24'23.7"E | 248.78° GEO (243° MAG) DVOR LOZ | 8.73 NM DME LOZ |
| Final approach descent angle: 3.15° | | | | |