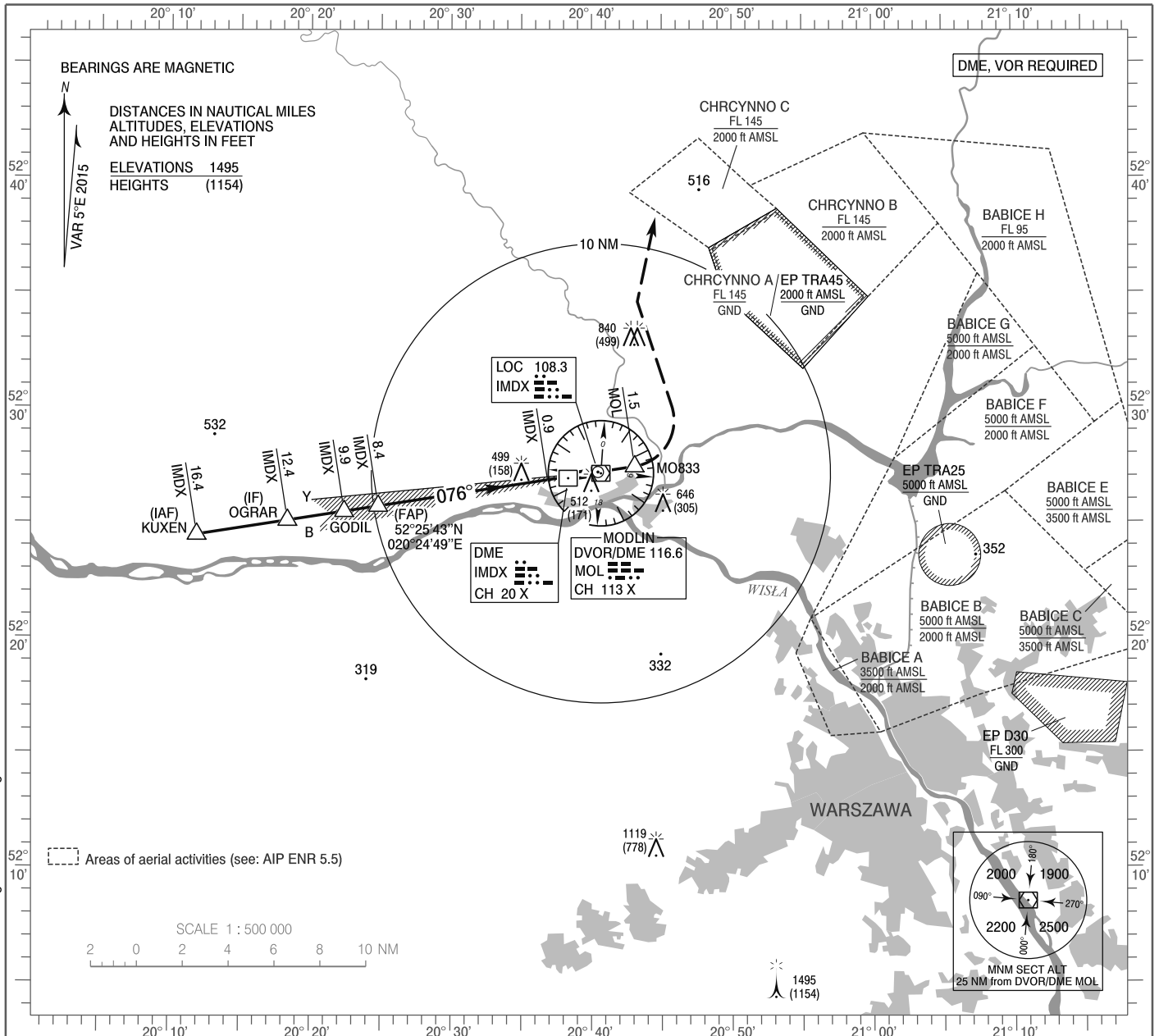


**INSTRUMENT  
APPROACH  
CHART - ICAO**

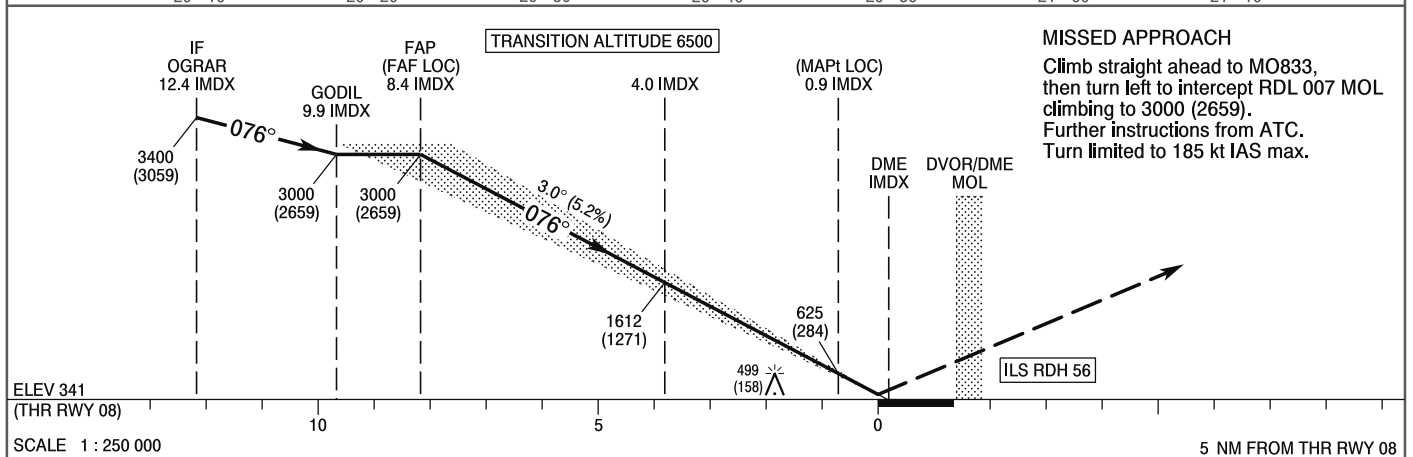
AERODROME ELEV 344 ft  
THR RWY 08 ELEV 341 ft  
HEIGHTS RELATED TO THR RWY 08

Warszawa DIRECTOR 129.380  
Warszawa APPROACH 125.055, 128.805  
Modlin TOWER 123.930  
Modlin INFORMATION 120.330

**Warszawa / Modlin  
ILS CAT II or LOC  
RWY 08 (CAT A/B/C/D)**



Correction: EP D30 changed. Editorial changes.



**MISSED APPROACH**  
Climb straight ahead to MO833,  
then turn left to intercept RDL 007 LOC  
climbing to 3000 (2659).  
Further instructions from ATC.  
Turn limited to 185 kt IAS max.

OCA (OCH)					Distance FAF - MAPt 7.5 NM								
Cat. of ACFT		A	B	C	D	Speed	kt	80	100	120	140	160	180
		Straight-in	Cat. I	502 (161)	514 (173)	522 (181)	533 (192)	Time	min : s	5 : 36	4 : 28	3 : 44	3 : 12
Cat. II	414 (73)		431 (90)	443 (102)	457 (116)	Rate of descent	ft / min	420	530	630	740	840	950
LOC	750 (409)		750 (409)	750 (409)	750 (409)								
Circling (OCH AAL)*		810 (466)	840 (496)	940 (596)	1040 (696)	Final approach distance/altitude (height)							
						Distance	7	6	5	4	3		
						Altitude (height)	2540 (2199)	2230 (1889)	1910 (1569)	1600 (1259)	1280 (939)		

INSTRUMENT  
APPROACH  
CHART - ICAOWARSAWA / Modlin  
ILS CAT II or LOC  
RWY 08 (CAT A/B/C/D)

FIX / POINT	LATITUDE	LONGITUDE	FIX FORMATION	
IAF KUXEN	52°24'27.7"N	020°11'54.4"E	080.89° GEO (076° MAG) LOC IMDX	16.37 NM DME IMDX
IF OGRAR	52°25'05.4"N	020°18'21.5"E	080.98° GEO (076° MAG) LOC IMDX	12.37 NM DME IMDX
GODIL	52°25'28.9"N	020°22'23.5"E	081.04° GEO (076° MAG) LOC IMDX	9.87 NM DME IMDX
FAP (FAF LOC)	52°25'42.9"N	020°24'49.4"E	081.06° GEO (076° MAG) LOC IMDX	8.36 NM DME IMDX
MAP <sub>t</sub> (LOC)	52°26'51.7"N	020°36'51.8"E	081.06° GEO (076° MAG) LOC IMDX	0.90 NM DME IMDX
MO833	52°27'26.6"N	020°43'04.1"E	078.37° GEO (073° MAG) DVOR MOL	1.50 NM DME MOL
Final approach descent angle: 3.00°				