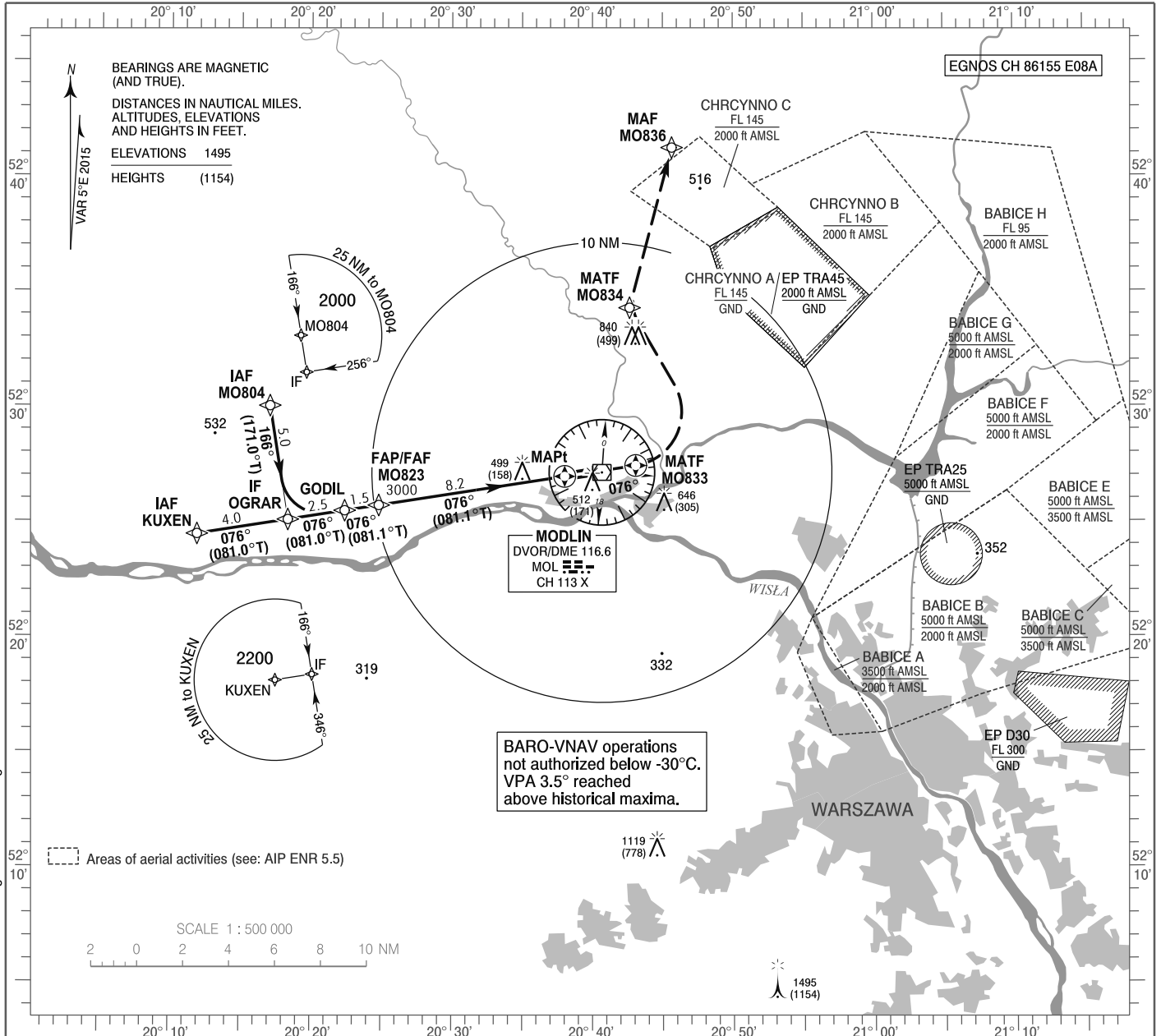


**INSTRUMENT
APPROACH
CHART - ICAO**

AERODROME ELEV 344 ft
THR RWY 08 ELEV 341 ft
HEIGHTS RELATED TO THR RWY 08

Warszawa DIRECTOR 129.380
Warszawa APPROACH 125.055, 128.805
Modlin TOWER 123.930
Modlin INFORMATION 120.330

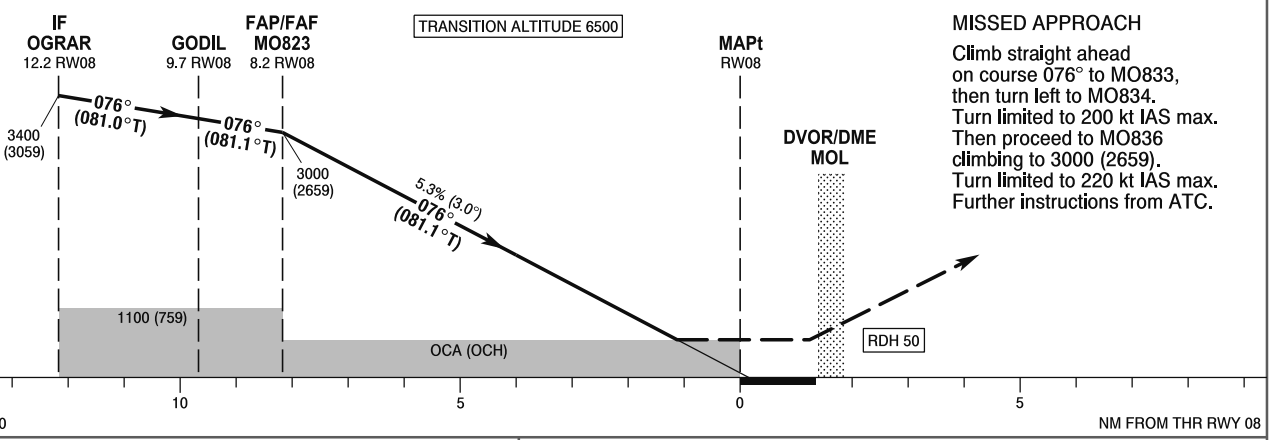
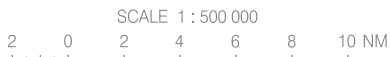
**Warszawa / Modlin
RNAV (GNSS)
RWY 08 (CAT A/B/C/D)**



Correction: EP D30 changed. Editorial changes.

BARO-VNAV operations
not authorized below -30°C.
VPA 3.5° reached
above historical maxima.

Areas of aerial activities (see: AIP ENR 5.5)



OCA (OCH)					Distance FAF - MAPt 8.2 NM								
Cat. of ACFT	A	B	C	D	Speed	kt	80	100	120	140	160	180	
Straight-in	LNAV	750 (409)	750 (409)	750 (409)	750 (409)	Time	min : s	6 : 08	4 : 55	4 : 06	3 : 31	3 : 04	2 : 41
	LNAV / VNAV	550 (209)	560 (219)	570 (229)	580 (239)	Rate of descent	ft / min	420	530	630	740	840	950
	LPV	517 (176)	529 (188)	537 (196)	548 (207)		Final approach distance/altitude (height)						
Circling (OCH AAL)*	810 (466)	840 (496)	940 (596)	1040 (696)	Distance		8	6	4	2			
*Circling north of aerodrome only					Altitude (height)		2940 (2599)	2310 (1969)	1670 (1329)	1030 (689)			

