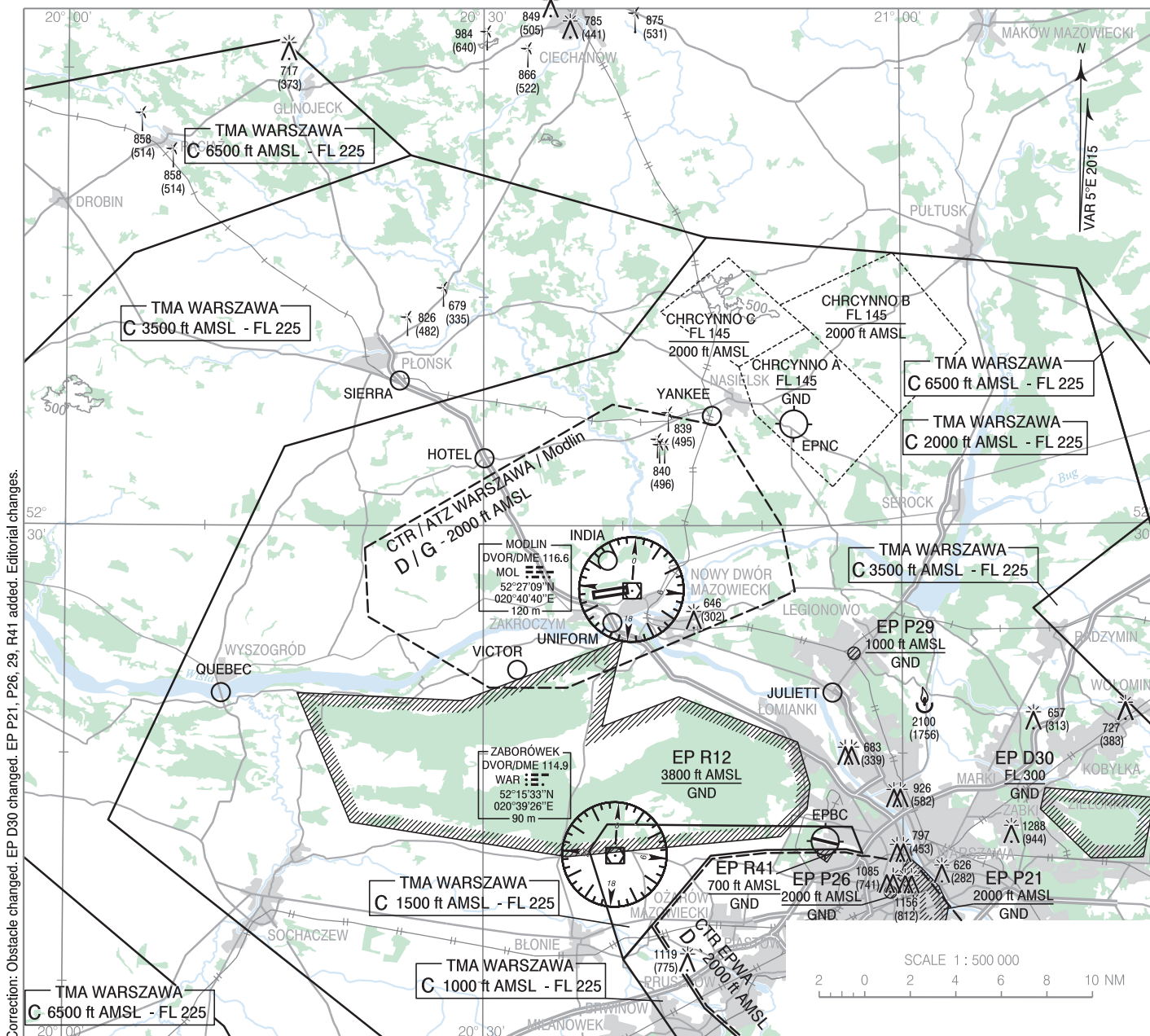


**VISUAL  
OPERATION  
CHART**

**AERODROME ELEV 344 ft**  
HEIGHTS RELATED TO AD ELEV

Warszawa DIRECTOR	129.380
Warszawa APPROACH	125.055, 128.805
Modlin TOWER	123.930
Modlin INFORMATION	120.330

**Warszawa / Modlin**



Correction: Obstacle changed. EP D30 changed. EP P21, P26, 29, R41 added. Editorial changes.

Areas of aerial activities (see: AIP ENR 5.5)

POINT ID	LATITUDE	LONGITUDE	POINT DESCRIPTION
HOTEL	52°32'57"N	020°30'04"E	Road intersection in Przyborowice town
INDIA	52°28'28"N	020°38'55"E	North - western end of Wymysly town
JULIETT	52°22'40"N	020°55'00"E	Jablonna town
QUEBEC	52°22'40"N	020°11'13"E	Bridge over the Vistula River in Wyszogrod town
SIERRA	52°36'21"N	020°23'58"E	Flyover over the intersection of S7 road and railway in Plorisk town
UNIFORM	52°25'45"N	020°39'15"E	Road bridge (S7 road) over the Vistula River
VICTOR	52°23'41"N	020°32'26"E	Church in Leoncin town
YANKEE	52°34'48"N	020°46'25"E	1 km north of Nasielsk railway station