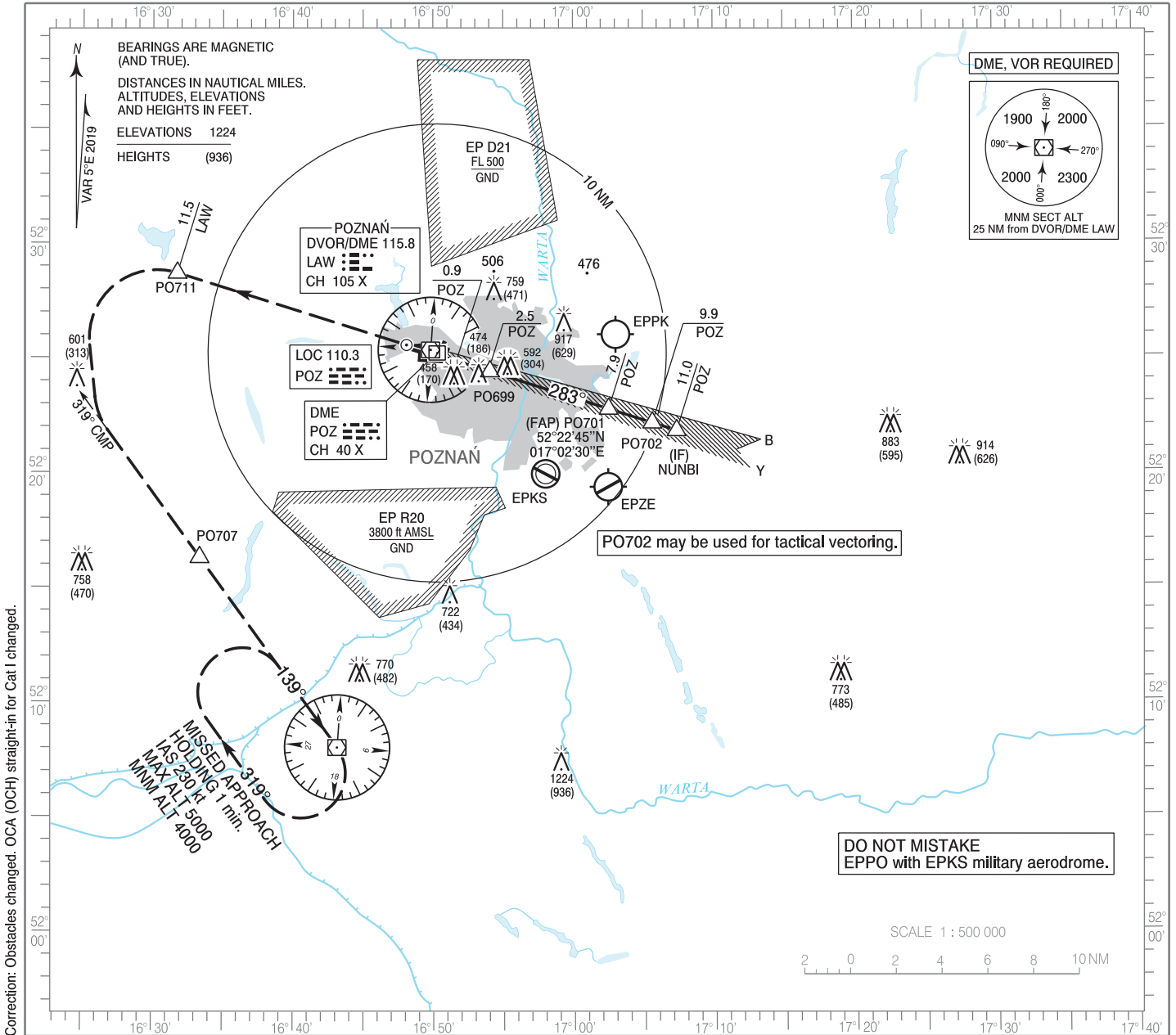


**INSTRUMENT
APPROACH
CHART - ICAO**

AERODROME ELEV 308 ft
THR RWY 28 ELEV 288 ft
HEIGHTS RELATED TO THR RWY 28

Poznań APPROACH 128.925
Poznań TOWER 119.980
ATIS 124.705

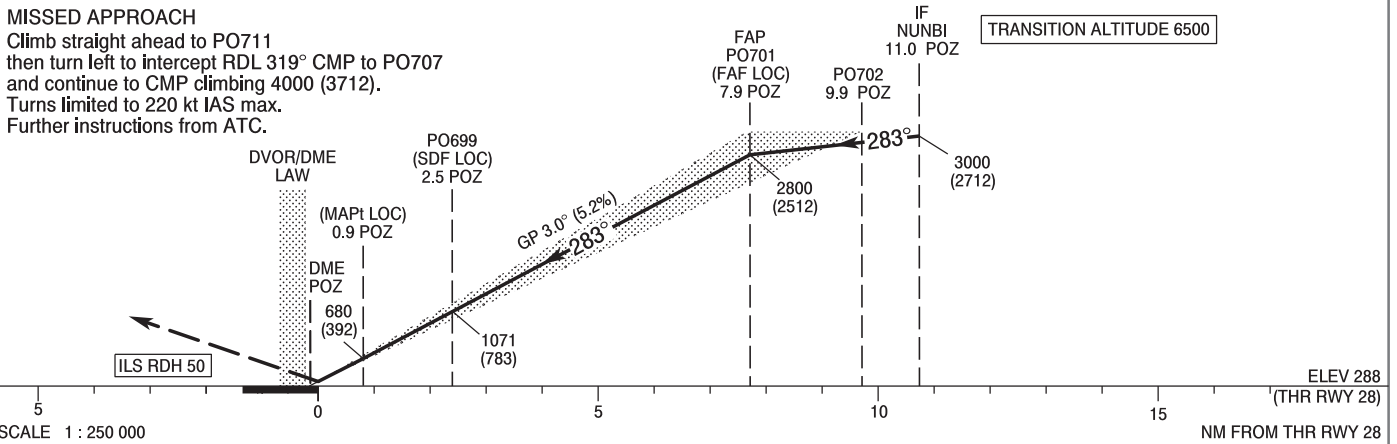
**Poznań - Ławica
ILS or LOC
RWY 28 (CAT A/B/C/D)**



Correction: Obstacles changed. OCA (OCH) straight-in for Cat I changed.

MISSED APPROACH

Climb straight ahead to PO711 then turn left to intercept RDL 319° CMP to PO707 and continue to CMP climbing 4000 (3712). Turns limited to 220 kt IAS max. Further instructions from ATC.



SCALE 1 : 250 000

Cat. of ACFT	OCA (OCH)				Distance FAF - MAPt 7.0 NM								
	A	B	C	D	Speed	kt	80	100	120	140	160	180	
Straight - in	Cat. I	496 (208)	508 (220)	516 (228)	527 (239)	Time	min : s	5 : 14	4 : 11	3 : 29	2 : 59	2 : 37	2 : 19
	LOC	680 (392)	680 (392)	680 (392)	680 (392)	Rate of descent	ft/min	420	530	630	740	840	950
	When stepdown fix not received.				Final approach distance / altitude (height)								
Circling (OCH AAL)		840 (552)	840 (552)	840 (552)	840 (552)	Distance	7	6	5	4	3	2	
						Altitude (height)	2520 (2232)	2200 (1912)	1880 (1592)	1560 (1272)	1240 (952)	930 (642)	