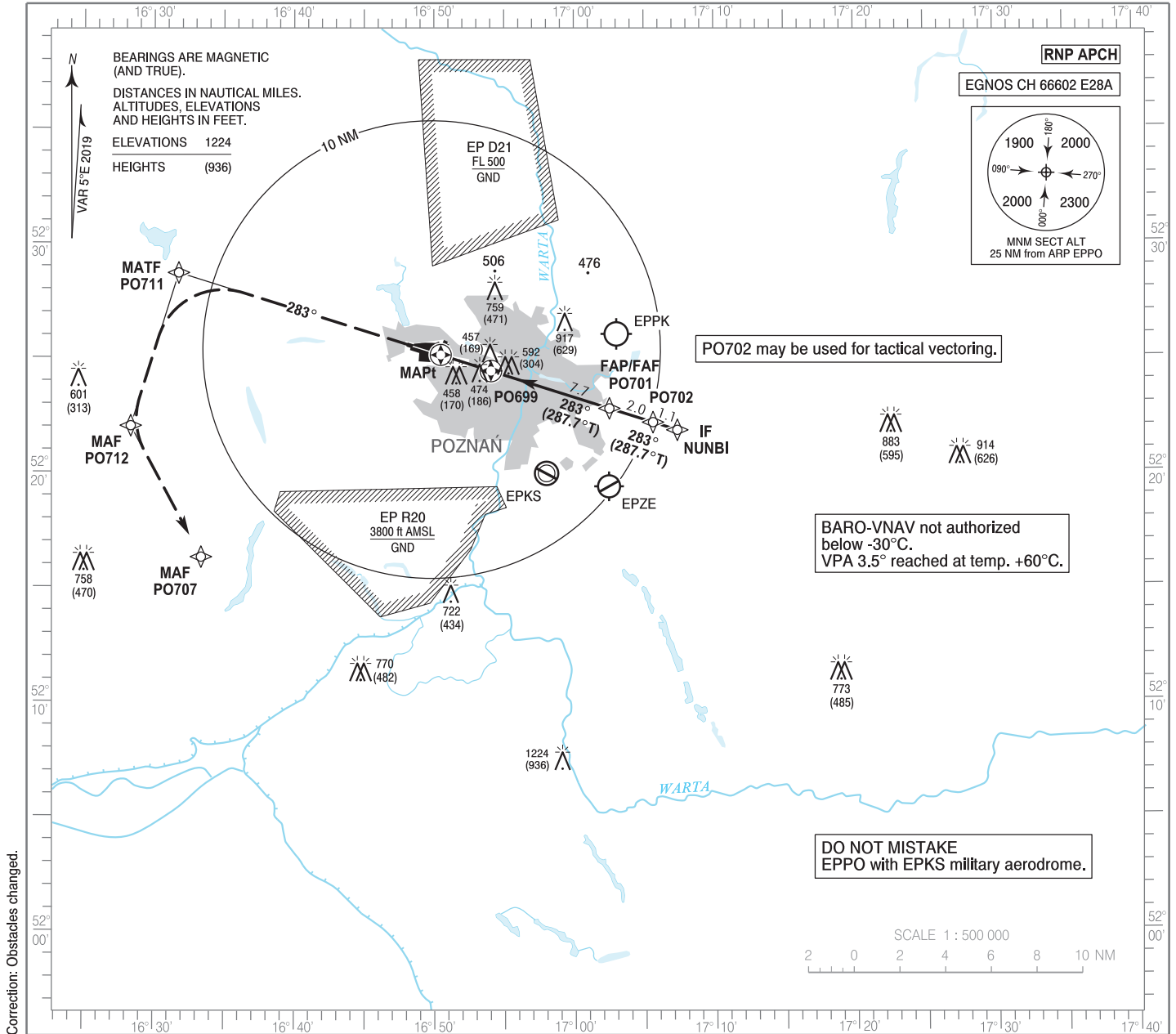


**INSTRUMENT
APPROACH
CHART - ICAO**

AERODROME ELEV 308 ft
THR RWY 28 ELEV 288 ft
HEIGHTS RELATED TO THR RWY 28

Poznań APPROACH 128.925
Poznań TOWER 119.980
ATIS 124.705

**Poznań - Ławica
RNP
RWY 28 (CAT A/B/C/D)**

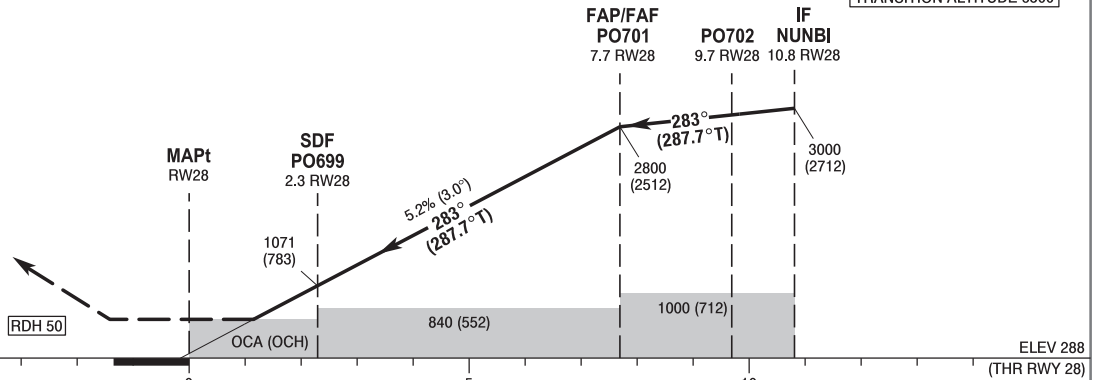


Correction: Obstacles changed.

MISSED APPROACH

Climb straight ahead on course 283° to PO711 then turn left to PO712 then turn left to PO707 climbing to 4000 (3692). Turns limited to 220 kt IAS max. Further instructions from ATC.

TRANSITION ALTITUDE 6500



SCALE 1:250 000

NM FROM THR RWY 28

OCA (OCH)					Distance FAF - MAPt 7.7 NM								
Cat. of ACFT		A	B	C	D	Speed	kt	80	100	120	140	160	180
		Straight-in	LNAV	710 (422)	710 (422)	710 (422)	710 (422)	Time	min : s	5 : 48	4 : 39	3 : 52	3 : 19
LNAV/VNAV	570 (282)		590 (302)	590 (302)	600 (312)	Rate of descent	ft / min	420	530	630	740	840	950
LPV	490 (202)		502 (214)	510 (222)	521 (233)		Final approach distance/altitude (height)						
Circling (OCH AAL)		840 (532)	840 (532)	1160 (852)	1160 (852)	Distance	7	6	5	4	3	2	
						Altitude (height)	2570 (2282)	2250 (1962)	1940 (1652)	1620 (1332)	1300 (1012)	980 (692)	