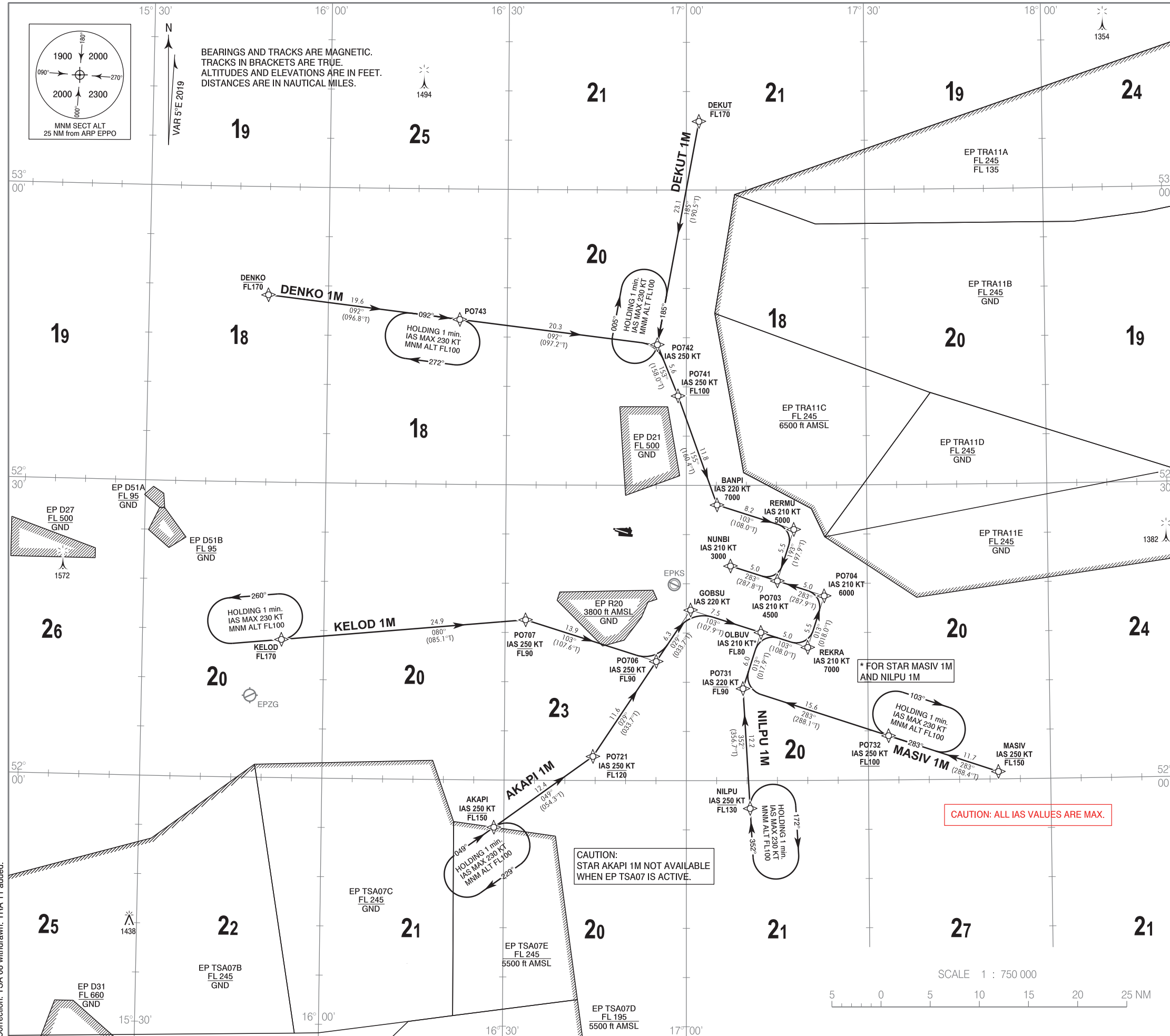


**RNAV 1 (GNSS)
STANDARD ARRIVAL CHART
INSTRUMENT (STAR) - ICAO**

TRANSITION ALTITUDE 6500

Poznań APPROACH 128.925
Poznań DELIVERY 121.805
Poznań TOWER 119.980

**Poznań - Ławica
RWY 28**



1. RNAV 1 approval required to conduct these procedures without additional restrictions. However it is possible to utilize RNAV 1 trajectories by RNAV 5 only approved aircraft. The following restriction apply: A/c equipped with RNAV 5 systems without navigation database, and requiring manual data input are exempted from the utilization of RNAV 1 procedures.
2. All aircraft which can not follow and utilize RNAV 1 trajectories shall advise ATC upon first contact. Radar vectoring will be provided, usually along published procedures.
3. Holding patterns as directed by ATC, available for non RNAV 1 approved aircraft.
4. Vertical planning information: air crews should plan for possible descent clearance in accordance with vertical restrictions specified on chart. Actual descent clearance will be as directed by ATC. If possible, CDA technique should be applied.
5. Expect direct routing/shortcuts by ATC whenever possible (especially during off-peak hours). The turn to final approach is usually performed by radar vectors to expedite traffic handling and for separation reasons.

Correction: TSA 08 withdrawn. TRA 11 added.