

**INSTRUMENT
APPROACH
CHART - ICAO**

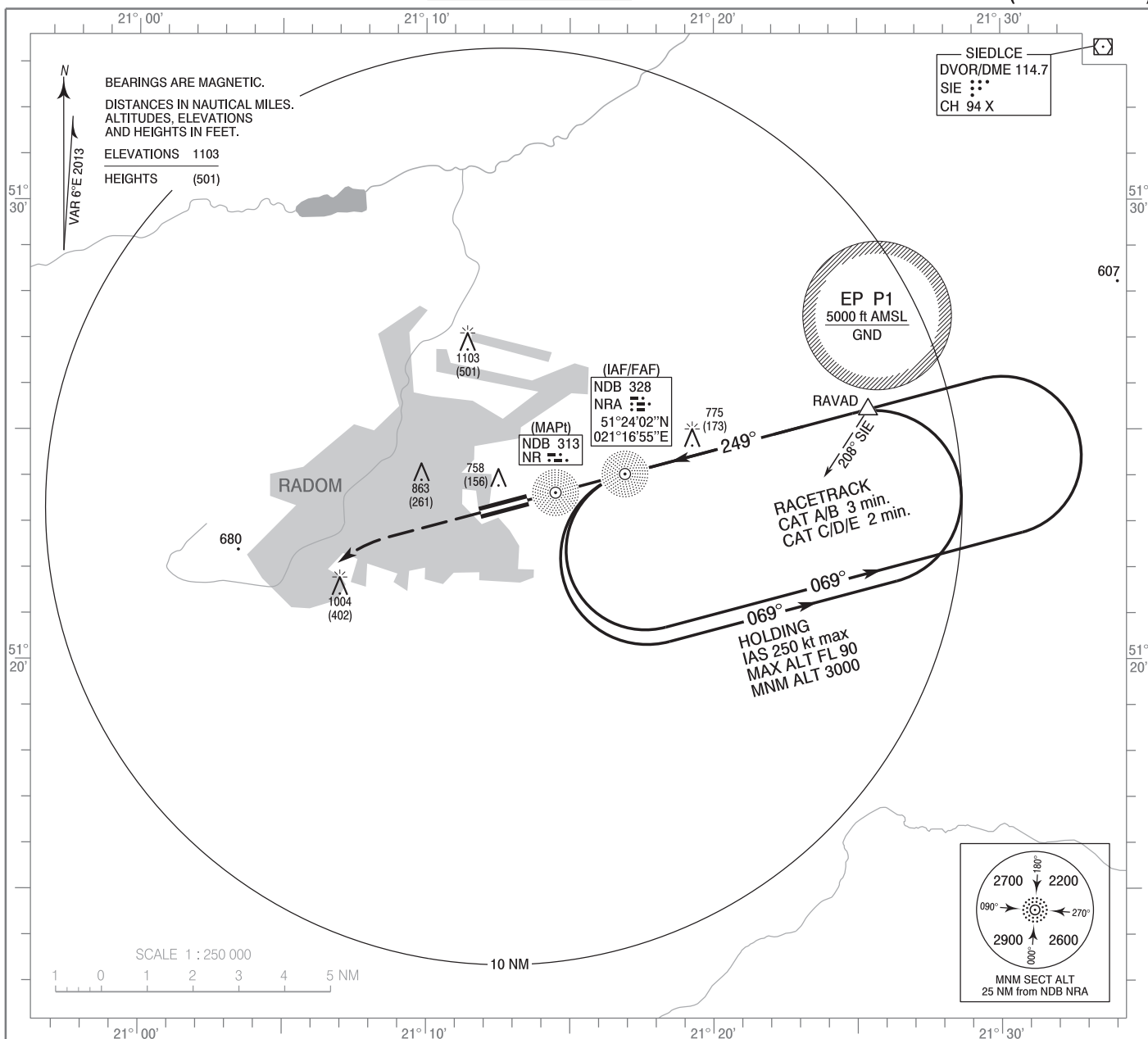
AERODROME ELEV 623 ft
THR RWY 25 ELEV 602 ft
HEIGHTS RELATED TO THR RWY 25

Radom PRECISION	129.000
Radom APPROACH	128.675
Radom TOWER	119.150
CIV Radom TOWER	122.055

**Radom - Sadków
NDB**

MILITARY USE ONLY

RWY 25 (CAT A/B/C/D/E)

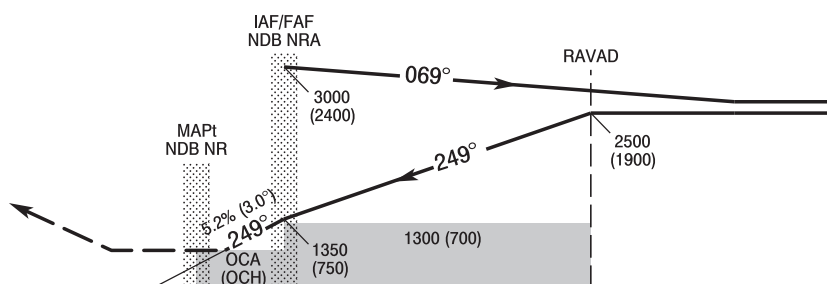


Correction: FREQ CIV Radom TOWER.

MISSED APPROACH

Climb straight ahead to 1700 (1100),
then turn left to NDB NRA
climbing to 3000 (2400)
and follow ATC instructions.

TRANSITION ALTITUDE 6500



SCALE 1 : 250 000

NM FROM THR RWY 25

Cat. of ACFT	OCA (OCH)					Distance FAF - MAPt 1.6 NM							
	A	B	C	D	E	Speed	kt	70	100	135	170	200	230
Straight - in	1012 (410)	1012 (410)	1012 (410)	1012 (410)	1012 (410)	Time	min : s	1 : 21	0 : 56	0 : 42	0 : 33	0 : 28	0 : 25
						Rate of descent	ft / min	370	530	720	900	1060	1220
Circling* (OCH AAL)	1173 (550)	1173 (550)	1503 (880)	1503 (880)	1603 (980)								

*Circling south of aerodrome only.