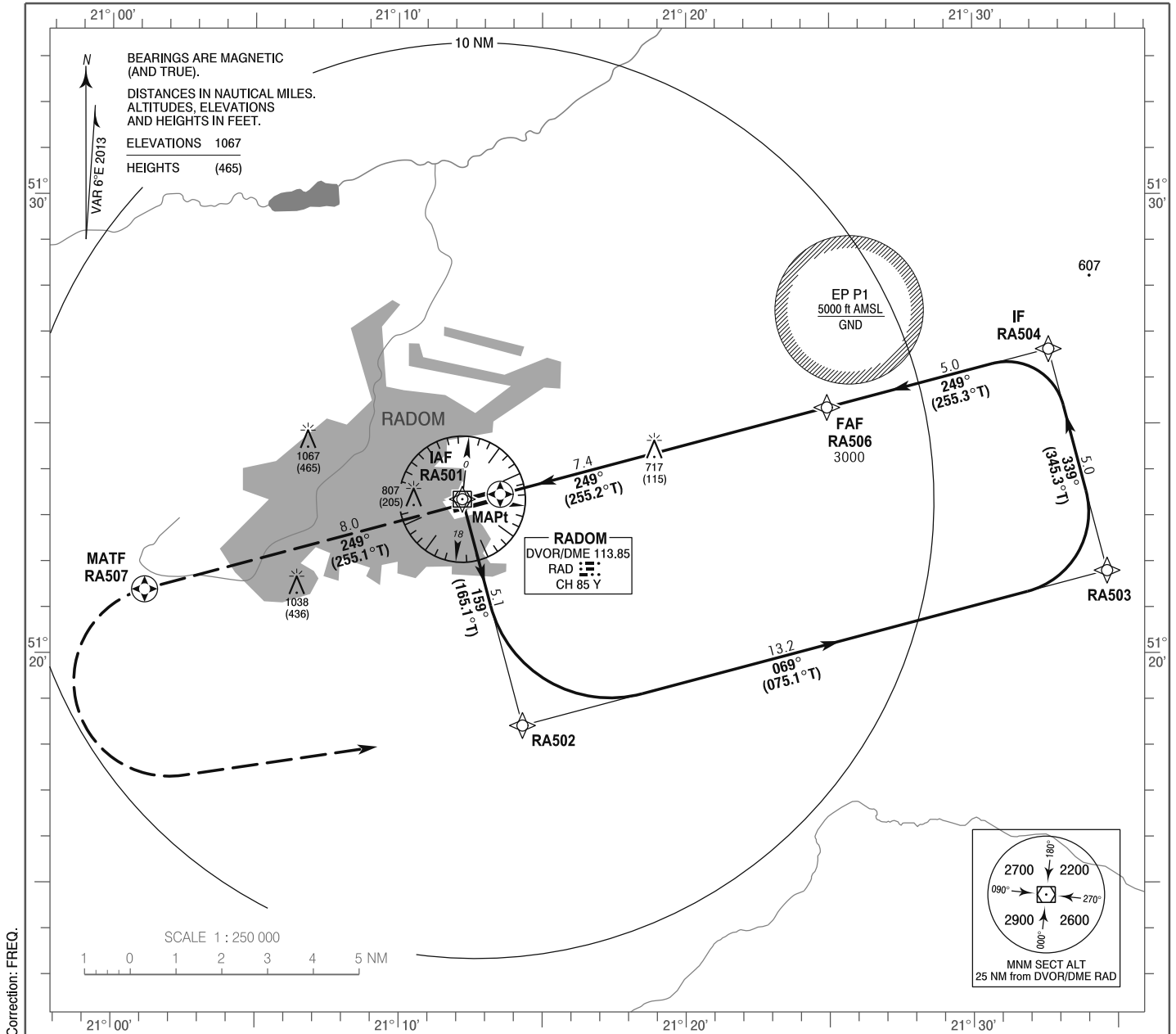


**INSTRUMENT
APPROACH
CHART - ICAO**

AERODROME ELEV 623 ft
THR RWY 25 ELEV 602 ft
HEIGHTS RELATED TO THR RWY 25

Radom TOWER 122.055
Radom INFORMATION 122.055

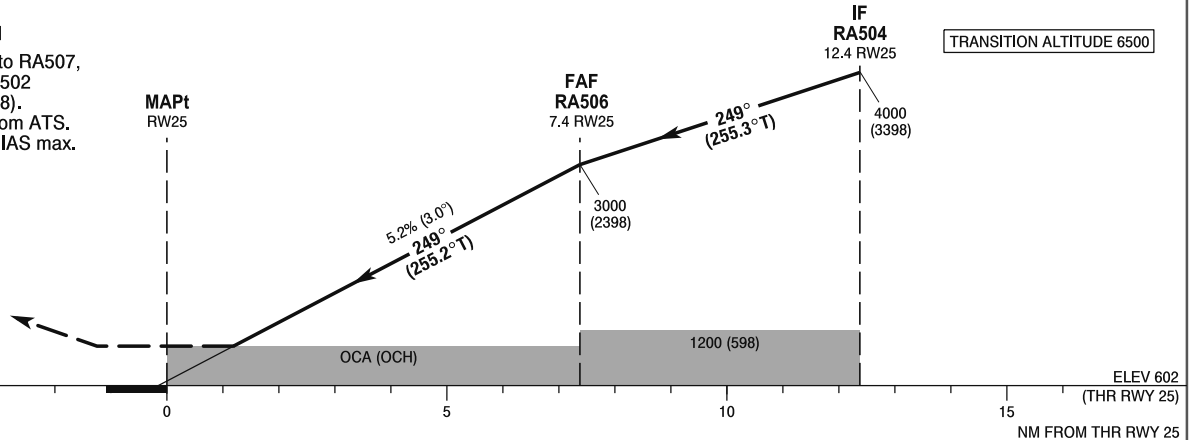
**Radom - Sadków
RNAV (GNSS)
RWY 25 (CAT A/B/C/D)**



Correction: FREQ.

MISSED APPROACH

Climb straight ahead to RA507, then turn left DCT RA502 climbing to 3500 (2898). Further instructions from ATS. Turn limited to 185 kt IAS max.



OCA (OCH)					Distance FAF - MAPt 7.4 NM								
Cat. of ACFT	A	B	C	D	Speed	kt	80	100	120	140	160	180	
Straight - in	LNAV	970 (368)	970 (368)	970 (368)	970 (368)	Time	min : s	5 : 32	4 : 26	3 : 41	3 : 10	2 : 46	2 : 28
						Rate of descent	ft / min	425	531	637	743	849	955
						Final approach distance/altitude (height)							
Circling * (OCH AAL)	1110 (487)	1120 (497)	1470 (847)	1470 (847)	Distance		6	5	4	3			
Circling south of aerodrome only.					Altitude (height)		2570 (1968)	2250 (1648)	1930 (1328)	1610 (1008)			