

**INSTRUMENT  
APPROACH  
CHART - ICAO**

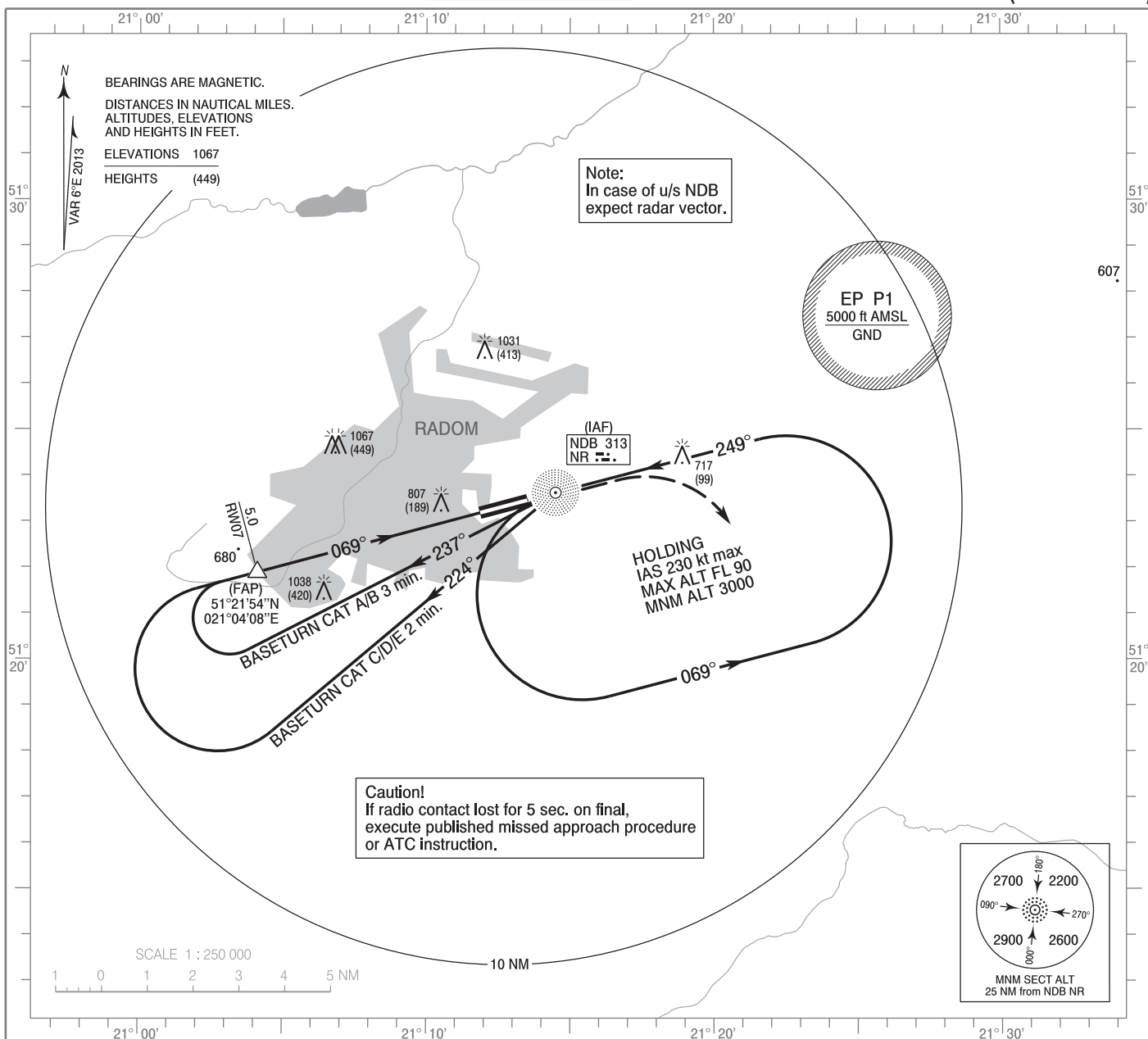
AERODROME ELEV 623 ft  
THR RWY 07 ELEV 618 ft  
HEIGHTS RELATED TO THR RWY 07

Radom PRECISION	129.000
Radom APPROACH	128.675
Radom TOWER	119.150
CIV Radom TOWER	122.055

**Radom - Sadków  
PAR**

**MILITARY USE ONLY**

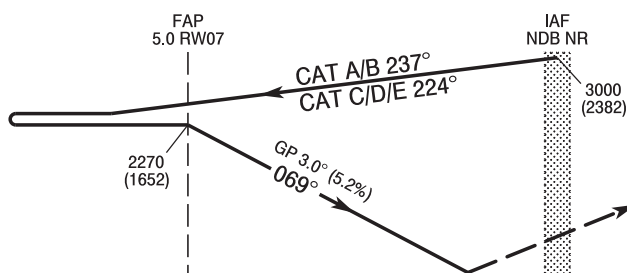
**RWY 07 (CAT A/B/C/D/E)**



Correction: FREQ CIV Radom TOWER.

TRANSITION ALTITUDE 6500

**MISSED APPROACH**  
Climb straight ahead  
to 1700 (1082),  
then turn right to NDB NR  
climbing to 3000 (2382)  
and follow ATC instructions.



ELEV 618

(THR RWY 07)

SCALE 1 : 250 000

Displaced THR

NM FROM THR RWY 07

OCA (OCH)						Distance FAP - RWY 07 5.0 NM								
Cat. of ACFT	A	B	C	D	E	Speed	kt	75	100	135	170	200	230	
Straight - in	PAR	878 (260)	878 (260)	878 (260)	878 (260)	878 (260)	Time	min : s	4 : 00	3 : 00	2 : 14	1 : 46	1 : 30	1 : 18
							Rate of descent	ft / min	400	530	710	900	1060	1200
Circling (OCH AAL)*		1173 (550)	1173 (550)	1503 (880)	1503 (880)	1603 (980)								

\*Circling south of aerodrome only.

**INSTRUMENT  
APPROACH  
CHART - ICAO**

**Radom - Sadków**  
**PAR**  
**RWY 07 (CAT A/B/C/D/E)**

FIX / POINT	LATITUDE	LONGITUDE	FIX FORMATION	
IAF NDB NR	51°23'37.8"N	021°14'29.9"E		
FAP	51°21'53.6"N	021°04'07.6"E	074.94° GEO (069°MAG) APCH COURSE	5.01 NM RW07
RW07	51°23'13.2"N	021°12'02.1"E		
Final approach descent angle: 3.00°				