

**INSTRUMENT
APPROACH
CHART - ICAO**

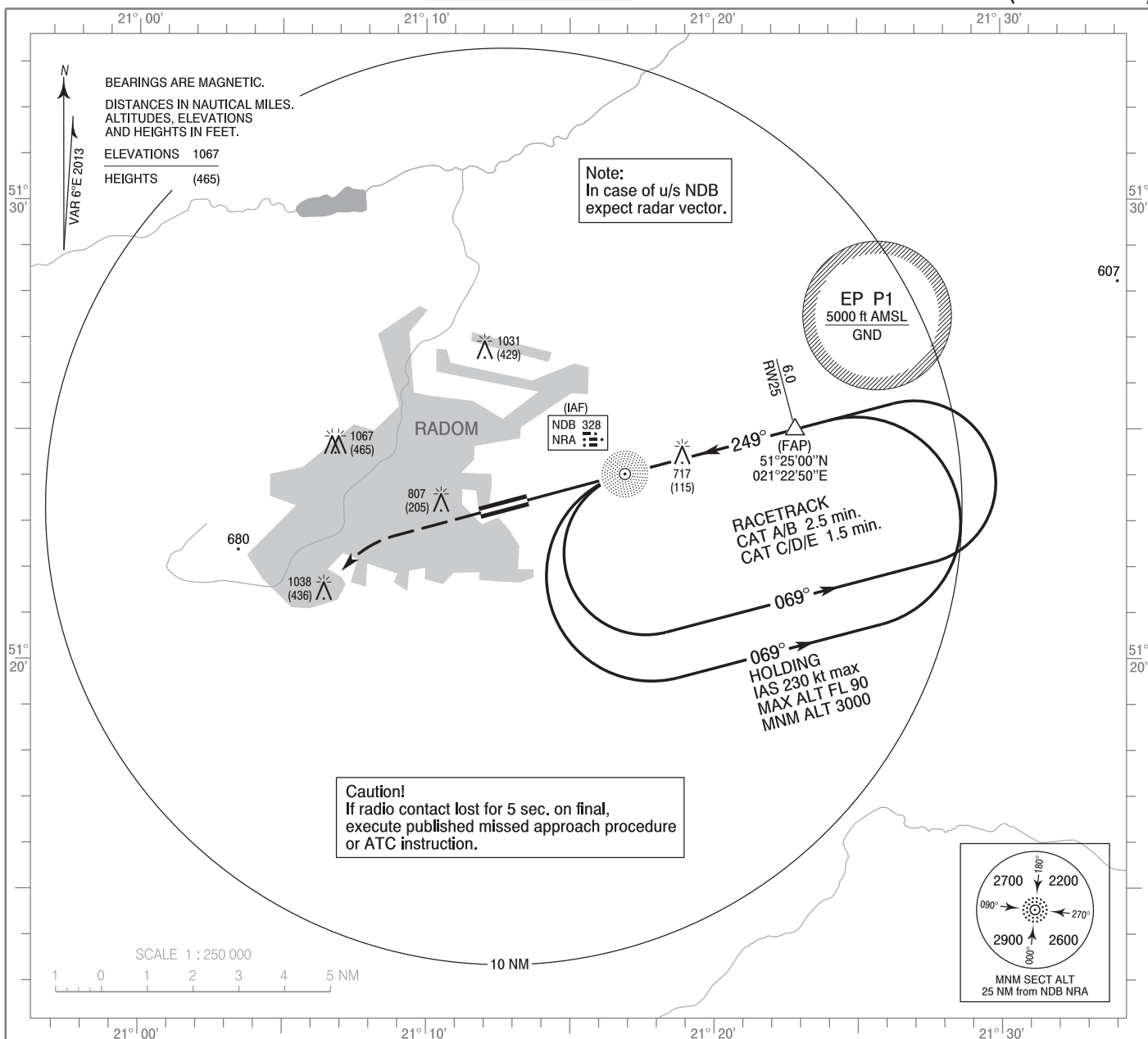
AERODROME ELEV 623 ft
THR RWY 25 ELEV 602 ft
HEIGHTS RELATED TO THR RWY 25

Radom PRECISION	129.000
Radom APPROACH	128.675
Radom TOWER	119.150
CIV Radom TOWER	122.055

**Radom - Sadków
PAR**

MILITARY USE ONLY

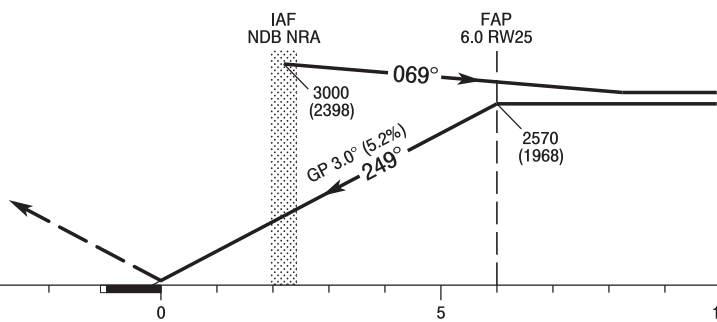
RWY 25 (CAT A/B/C/D/E)



Correction: FREQ CIV Radom TOWER.

MISSED APPROACH
Climb straight ahead to 1700 (1098),
then turn left to NDB NRA
climbing to 3000 (2398)
and follow ATC instructions.

TRANSITION ALTITUDE 6500



SCALE 1 : 250 000

Cat. of ACFT	OCA (OCH)					Distance FAP - RWY25 6.0 NM								
	A	B	C	D	E	Speed	kt	75	100	135	170	200	230	
Straight - in	PAR	862 (260)	862 (260)	862 (260)	862 (260)	862 (260)	Time	min : s	4 : 49	3 : 36	2 : 40	2 : 07	1 : 48	1 : 34
							Rate of descent	ft / min	400	530	710	900	1060	1200
Circling (OCH AAL)*		1173 (550)	1173 (550)	1503 (880)	1503 (880)	1603 (980)								

*Circling south of aerodrome only.

**INSTRUMENT
APPROACH
CHART - ICAO**

**Radom - Sadków
PAR
RWY 25 (CAT A/B/C/D/E)**

FIX / POINT	LATITUDE	LONGITUDE	FIX FORMATION	
IAF NDB NRA	51°24'02.3"N	021°16'54.8"E		
FAP	51°25'00.5"N	021°22'49.9"E	255.24° GEO (249° MAG) APCH COURSE	6.02 NM RW25
RW25	51°23'28.1"N	021°13'31.8"E		
Final approach descent angle: 3.00°				