

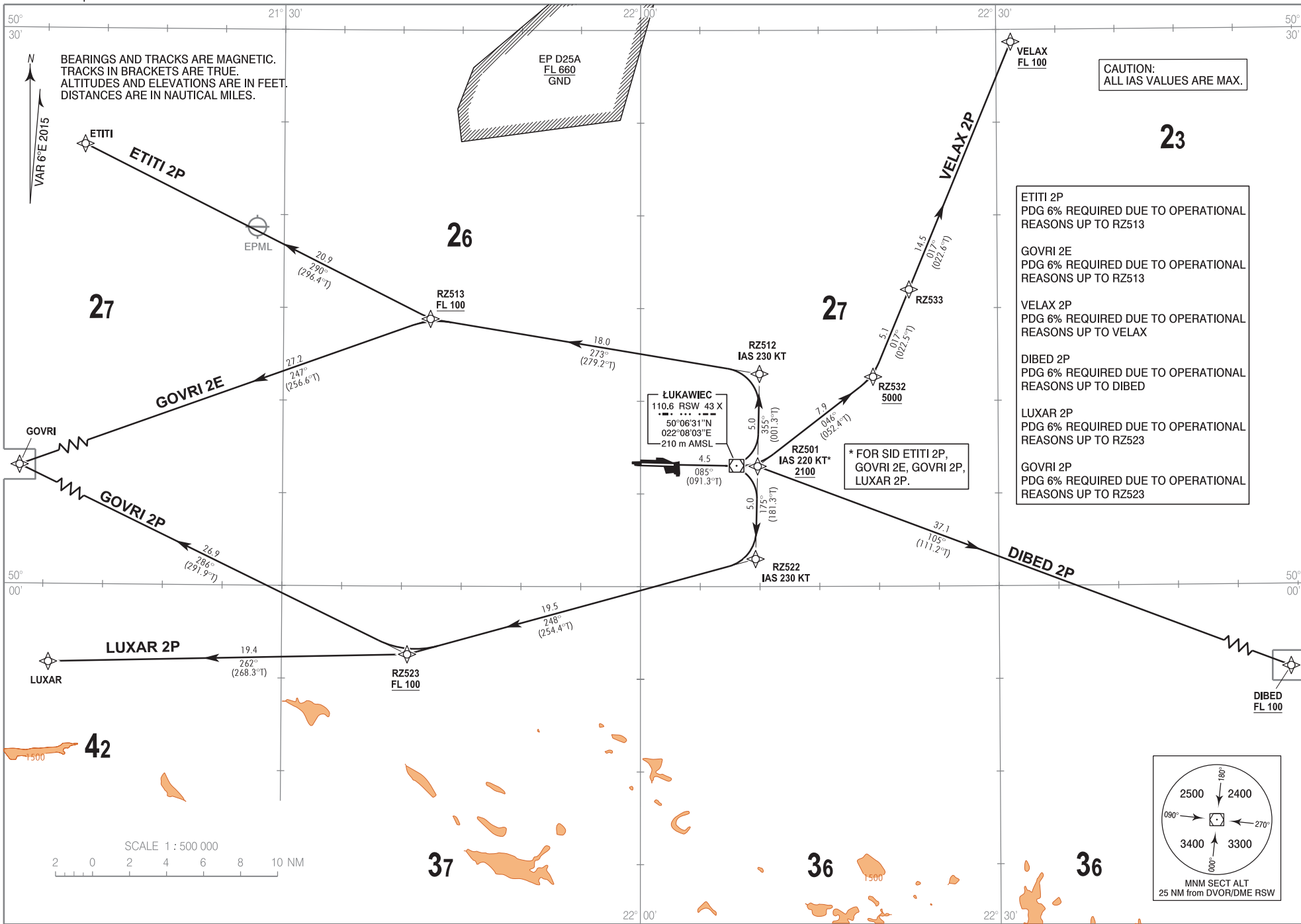
**RNP 1 (GNSS)  
STANDARD DEPARTURE CHART  
INSTRUMENT (SID) - ICAO**

TRANSITION ALTITUDE 6500

Rzeszów DELIVERY 121.805  
Rzeszów TOWER 126.805

**Rzeszów - Jasionka  
RWY 09**

Correction: New procedure.



**ETITI 2P**  
PDG 6% REQUIRED DUE TO OPERATIONAL REASONS UP TO RZ513

**GOVRI 2E**  
PDG 6% REQUIRED DUE TO OPERATIONAL REASONS UP TO RZ513

**VELAX 2P**  
PDG 6% REQUIRED DUE TO OPERATIONAL REASONS UP TO VELAX

**DIBED 2P**  
PDG 6% REQUIRED DUE TO OPERATIONAL REASONS UP TO DIBED

**LUXAR 2P**  
PDG 6% REQUIRED DUE TO OPERATIONAL REASONS UP TO RZ523

**GOVRI 2P**  
PDG 6% REQUIRED DUE TO OPERATIONAL REASONS UP TO RZ523

\* FOR SID ETITI 2P,  
GOVRI 2E, GOVRI 2P,  
LUXAR 2P.

