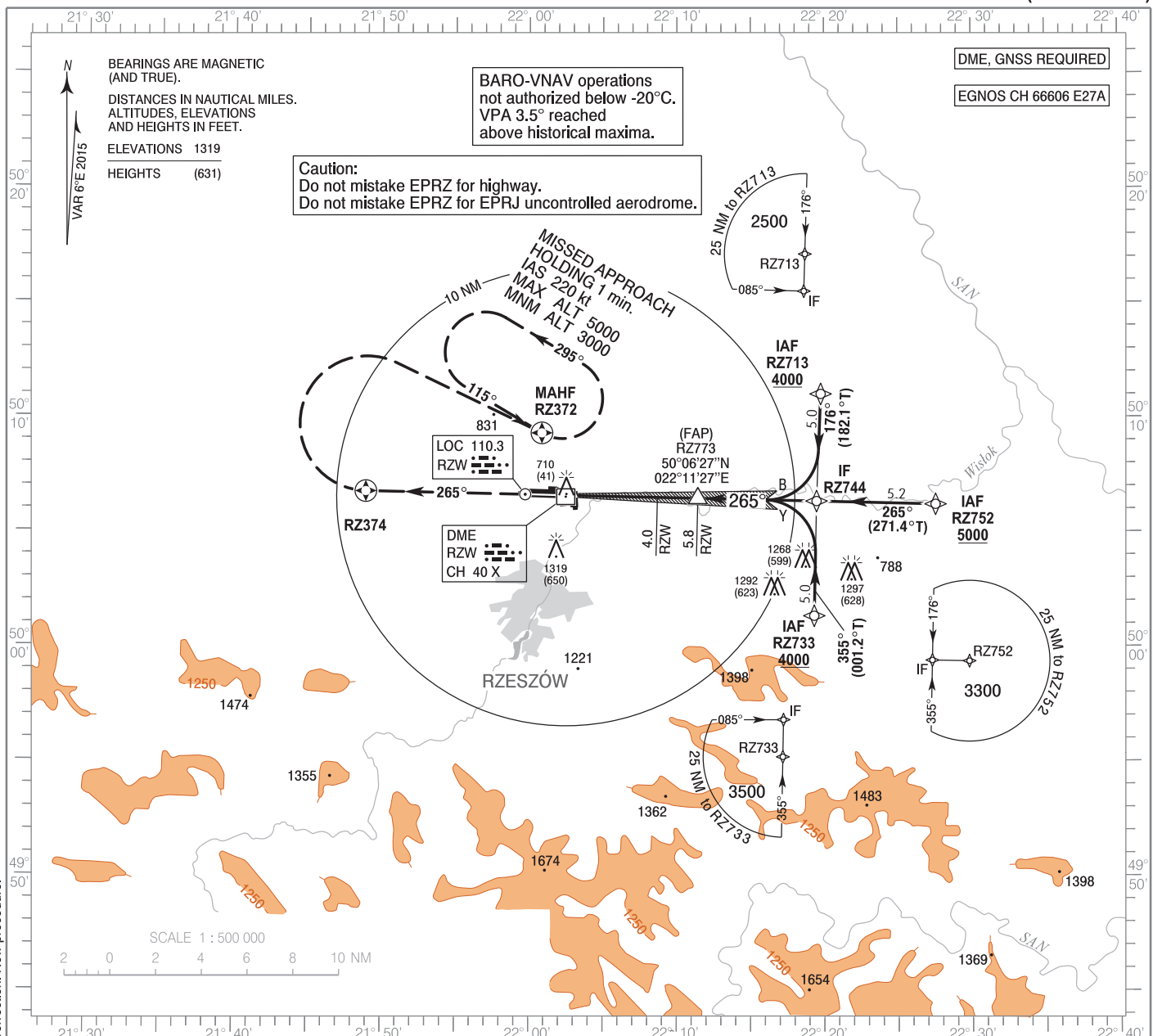


**INSTRUMENT
APPROACH
CHART - ICAO**

AERODROME ELEV 693 ft
THR RWY 27 ELEV 669 ft
HEIGHTS RELATED TO THR RWY 27

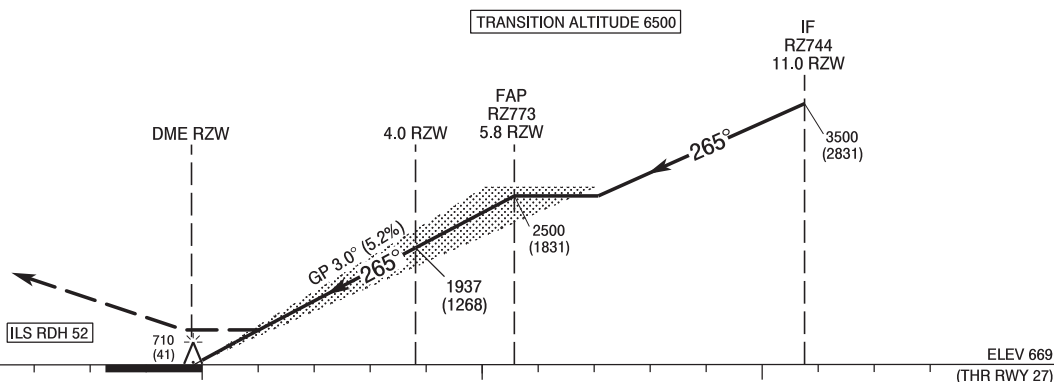
Rzeszów TOWER 126.805
ATIS 124.955

**Rzeszów - Jasionka
ILS y CAT II
RWY 27 (CAT A/B/C/D)**



Correction: New procedure.

MISSED APPROACH
Climb on course 265° to RZ374
then turn right to RZ372
and join holding at RZ372
climbing to 5000 (4331).
Further instructions from ATC.
Turn limited to 220 kt IAS max.



SCALE 1 : 250 000

NM FROM THR RWY 27

OCA (OCH)					Distance FAP - RW27 5.6 NM								
Cat. of ACFT		A	B	C	D	Speed	kt	80	100	120	140	160	180
		Straight - in	Cat. I	840 (171)	852 (183)	860 (191)	871 (202)	Time	min : s	4 : 12	3 : 22	2 : 48	2 : 24
Cat. II	752 (83)		769 (100)	781 (112)	795 (126)	Rate of descent	ft / min	420	530	630	740	840	950
					Final approach distance / altitude (height)								
Circling (OCH AAL)*		1160 (467)	1210 (517)	1360 (667)	1390 (697)	Distance	5	4	3	2			
*Cat C and D: circling north of aerodrome only.						Altitude (height)	2260 (1591)	1940 (1271)	1620 (951)	1300 (631)			

**Rzeszów - Jasionka
 ILS y Cat II
 RWY 27 (CAT A/B/C/D)**

EPRZ RNAV (GNSS) RWY 27 INITIAL TRANSITION FROM RZ713

SEQUENCE NUMBER	PATH TERMINATOR	WAYPOINT IDENTIFIER	FLY-OVER	COURSE/TRACK °M (°T)	DISTANCE (NM)	TURN DIRECTION	ALTITUDE	SPEED (kt)	VPA/TCH	NAV SPEC
001	IF	RZ713	-	-	-	-	+4000 ft	-230	-	RNP 1
002	TF	RZ744	-	176 (182.12)	4.97	R	+3500 ft	-	-	RNP 1

EPRZ RNAV (GNSS) RWY 27 INITIAL TRANSITION FROM RZ752

SEQUENCE NUMBER	PATH TERMINATOR	WAYPOINT IDENTIFIER	FLY-OVER	COURSE/TRACK °M (°T)	DISTANCE (NM)	TURN DIRECTION	ALTITUDE	SPEED (kt)	VPA/TCH	NAV SPEC
001	IF	RZ752	-	-	-	-	+5000 ft	-	-	RNP 1
002	TF	RZ744	-	265 (271.40)	5.20	-	+3500 ft	-	-	RNP 1

EPRZ RNAV (GNSS) RWY 27 INITIAL TRANSITION FROM RZ733

SEQUENCE NUMBER	PATH TERMINATOR	WAYPOINT IDENTIFIER	FLY-OVER	COURSE/TRACK °M (°T)	DISTANCE (NM)	TURN DIRECTION	ALTITUDE	SPEED (kt)	VPA/TCH	NAV SPEC
001	IF	RZ733	-	-	-	-	+4000 ft	-230	-	RNP1
002	TF	RZ744	-	355 (001.22)	5.50	L	+3500 ft	-	-	RNP 1

EPRZ RNAV (GNSS) RWY 27 MISSED APPROACH TRANSITION

SEQUENCE NUMBER	PATH TERMINATOR	WAYPOINT IDENTIFIER	FLY-OVER	COURSE/TRACK °M (°T)	DISTANCE (NM)	TURN DIRECTION	ALTITUDE	SPEED (kt)	VPA/TCH	NAV SPEC
001	-	RW27	-	-	-	-	-	-	-	RNP1
002	CF	RZ374	Y	265 (271.01)	9.38	-	-	-	-	RNP 1
003	DF	RZ372	-	-	-	R	+3000 ft	-220	-	RNP 1
004	HM	RZ372	Y	115 (120.97)	-	L	-5000 ft	-220	-	RNP 1

WAYPOINT IDENTIFIER	COORDINATES		FIX FORMATION	
RZ713 (IAF)	50°11'17.5"N	022°19'46.3"E	-	-
RZ752 (IAF)	50°06'11.9"N	022°27'33.2"E	-	-
RZ733 (IAF)	50°01'19.8"N	022°19'19.2"E	-	-
RZ744 (IF)	50°06'19.8"N	022°19'29.1"E	271.16° GEO (265° MAG) LOC RZW	10.95 NM DME RZW
RZ773 (FAP)	50°06'27.2"N	022°11'26.7"E	271.16° GEO (265° MAG) LOC RZW	5.77 NM DME RZW
RW27	50°06'34.5"N	022°02'46.2"E	-	-
RZ374 (MATF)	50°06'44.9"N	021°48'55.7"E	-	-
RZ372 (MAHF)	50°09'17.7"N	022°00'51.4"E	-	-