

**INSTRUMENT
APPROACH
CHART - ICAO**

AERODROME ELEV 693 ft
THR RWY 27 ELEV 669 ft
HEIGHTS RELATED TO THR RWY 27

Rzeszów TOWER 126.805
ATIS 124.955

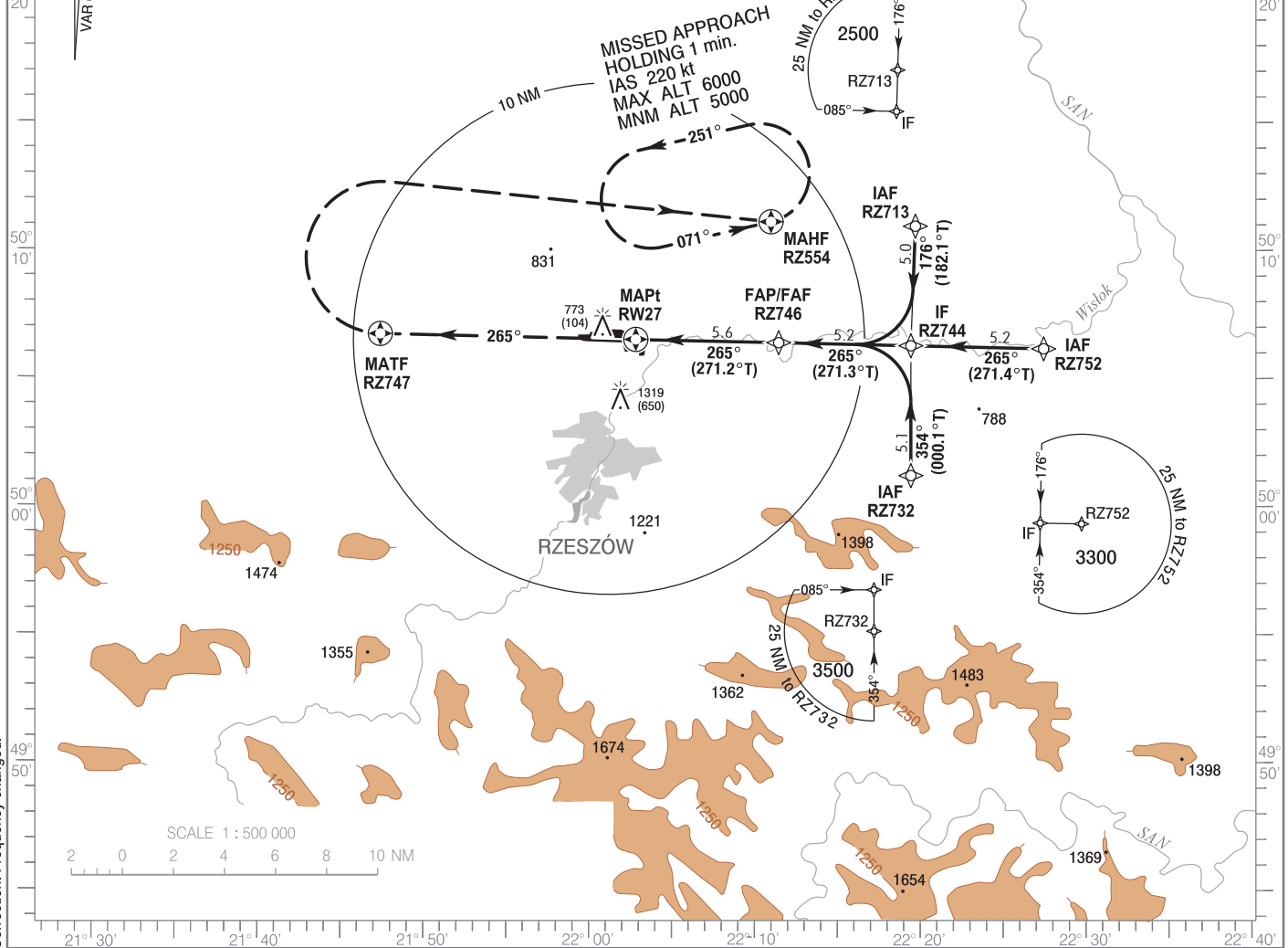
**Rzeszów - Jasionka
RNAV (GNSS)
RWY 27 (CAT A/B/C/D)**

EGNOS CH 66606 E27A

Caution:
Do not mistake EPRJ RWY 26
for EPRZ RWY 27.

BARO-VNAV operations
not authorized below -20°C.
VPA 3.5° reached
above historical maxima.

BEARINGS ARE MAGNETIC
(AND TRUE).
DISTANCES IN NAUTICAL MILES.
ALTITUDES, ELEVATIONS
AND HEIGHTS IN FEET.
ELEVATIONS 1319
HEIGHTS (631)

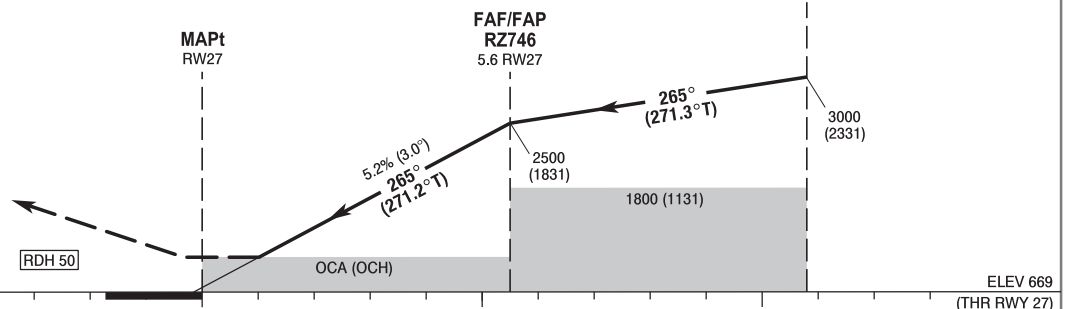


Correction: Frequency changed.

MISSED APPROACH

Climb on course 265° to RZ747
then turn right direct to RZ554
climbing to 5000 (4331) and hold.
Further instructions from ATC.
Turn limited to 220 kt IAS max.

TRANSITION ALTITUDE 6500



Cat. of ACFT	OCA (OCH)				Distance FAF - MAPt 5.6 NM								
	A	B	C	D	Speed	kt	80	100	120	140	160	180	
Straight - in	LNAV	1050 (381)	1050 (381)	1050 (381)	1050 (381)	Time	min : s	4 : 12	3 : 22	2 : 48	2 : 24	2 : 06	1 : 52
	LNAV / VNAV	950 (281)	960 (291)	970 (301)	980 (311)	Rate of descent	ft / min	420	530	630	740	840	950
	LPV	849 (180)	861 (192)	869 (200)	880 (211)	Final approach distance / altitude (height)							
Circling (OCH AAL)*					Distance		5	4	3	2			
					Altitude (height)		2320 (1651)	2000 (1331)	1680 (1011)	1360 (691)			