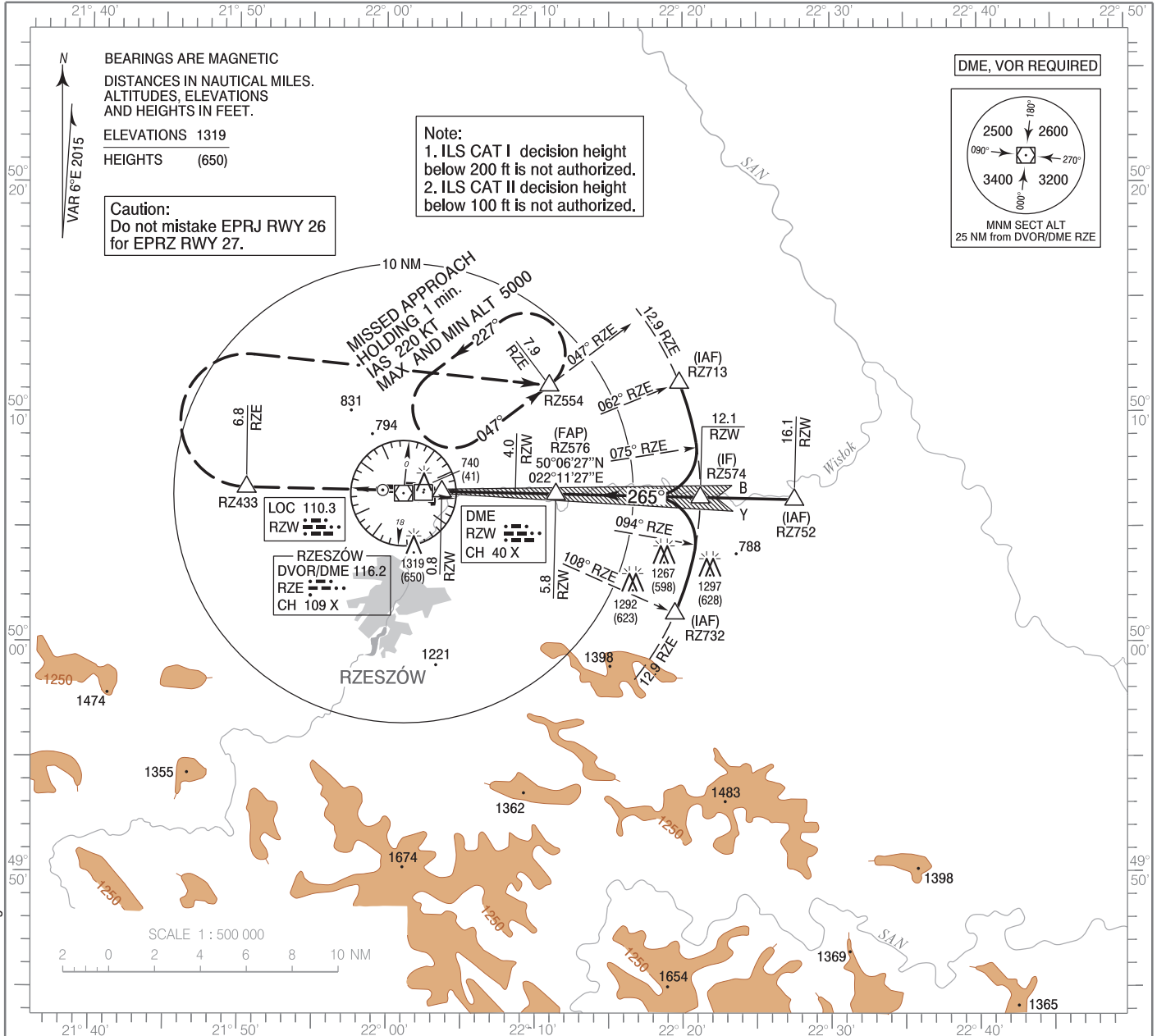


**INSTRUMENT
APPROACH
CHART - ICAO**

AERODROME ELEV 693 ft
THR RWY 27 ELEV 669 ft
HEIGHTS RELATED TO THR RWY 27

Rzeszów TOWER 126.805
ATIS 124.955

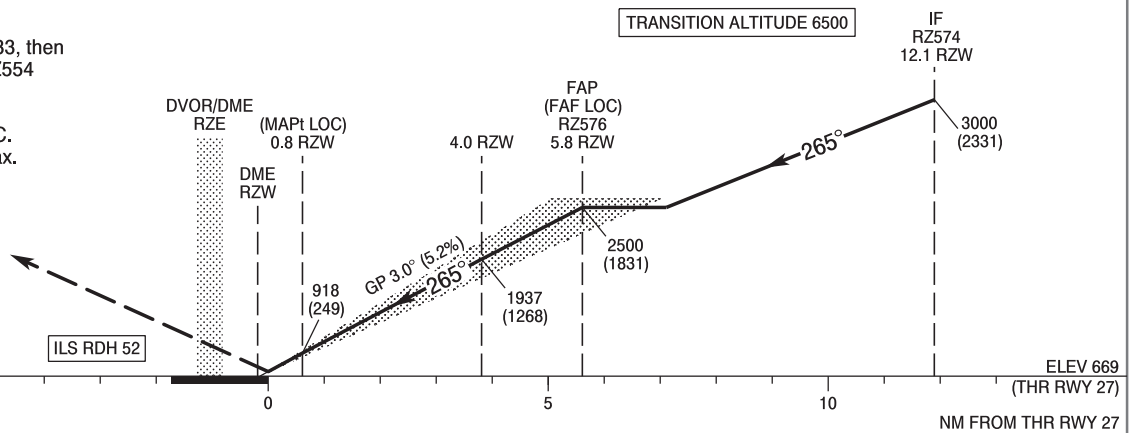
**Rzeszów - Jasionka
ILS CAT II z or LOC z
RWY 27 (CAT A/B/C/D)**



Correction: MA changed.

MISSED APPROACH

Climb straight ahead to RZ433, then turn right heading 090° to RZ554 and join holding at RZ554 climbing to 5000 (4331). Further instructions from ATC. Turn limited to 220 kt IAS max.



OCA (OCH)					Distance FAF - MAPt 5.0 NM								
Cat. of ACFT		A	B	C	D	Speed	kt	80	100	120	140	160	180
		Straight - in	Cat. I	840 (171)	852 (183)	860 (191)	871 (202)	Time	min : s	3 : 44	2 : 59	2 : 29	2 : 08
Cat. II	752 (83)		769 (100)	781 (112)	795 (126)	Rate of descent	ft / min	430	540	640	750	850	960
LOC	1020 (351)		1020 (351)	1020 (351)	1020 (351)	Final approach distance / altitude (height)							
Circling (OCH AAL)*		1160 (467)	1200 (507)	1340 (647)	1390 (697)	Distance	5	4	3	2			
*Cat C and D: circling north of aerodrome only.						Altitude (height)	2250 (1581)	1940 (1271)	1620 (951)	1310 (641)			

INSTRUMENT
APPROACH
CHART - ICAORzeszów - Jasionka
ILS CAT II z or LOC z
RWY 27 (CAT A/B/C/D)

FIX / POINT	LATITUDE	LONGITUDE	FIX FORMATION	
IAF RZ713	50°11'17.5"N	022°19'46.3"E	067.98° GEO (062° MAG) DVOR RZE	12.92 NM DME RZE
IAF RZ752	50°06'11.9"N	022°27'33.2"E	271.16° GEO (265° MAG) LOC RZW	16.14 NM DME RZW
IAF RZ732	50°01'15.5"N	022°19'28.4"E	113.74° GEO (108° MAG) DVOR RZE	12.92 NM DME RZE
IF RZ574	50°06'18.2"N	022°21'12.1"E	271.16° GEO (265° MAG) LOC RZW	12.05 NM DME RZW
FAP (FAF LOC) RZ576	50°06'27.2"N	022°11'26.5"E	271.16° GEO (265° MAG) LOC RZW	5.77 NM DME RZW
MAPt (LOC)	50°06'33.8"N	022°03'43.3"E	271.15° GEO (265° MAG) LOC RZW	0.80 NM DME RZW
RZ433	50°06'43.8"N	021°50'31.3"E	272.18° GEO (266° MAG) DVOR RZE	6.84 NM DME RZE
RZ554	50°11'10.6"N	022°10'59.0"E	53.35° GEO (047° MAG) DVOR RZE	7.89 NM DME RZE
Final approach descent angle: 3.00°				