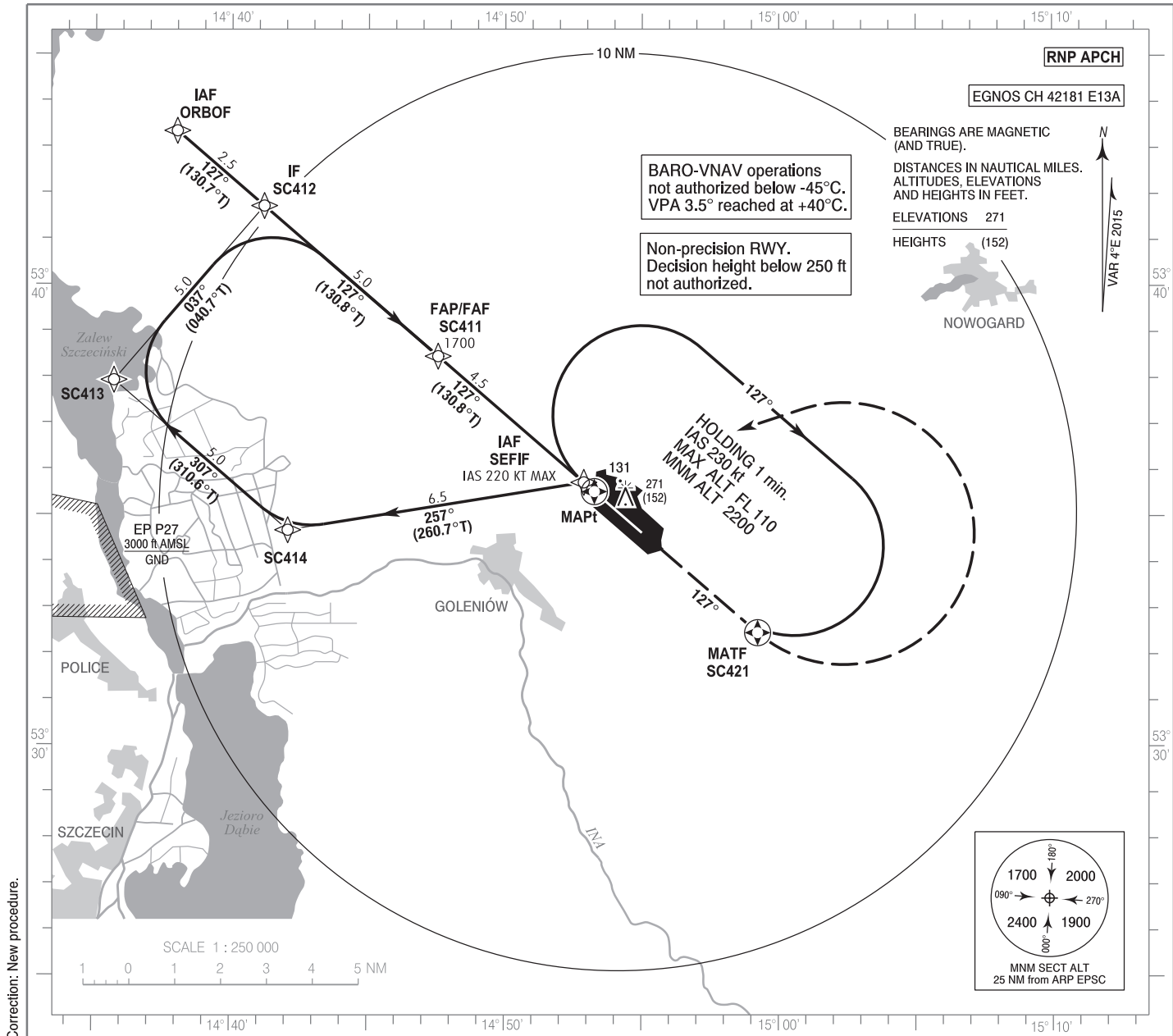


**INSTRUMENT
APPROACH
CHART - ICAO**

AERODROME ELEV 155 ft
THR RWY 13 ELEV 119 ft
HEIGHTS RELATED TO THR RWY 13

Szczecin TOWER 121.255
ATIS 132.130

**Szczecin - Goleniów
RNP
RWY 13 (CAT A/B/C/D)**



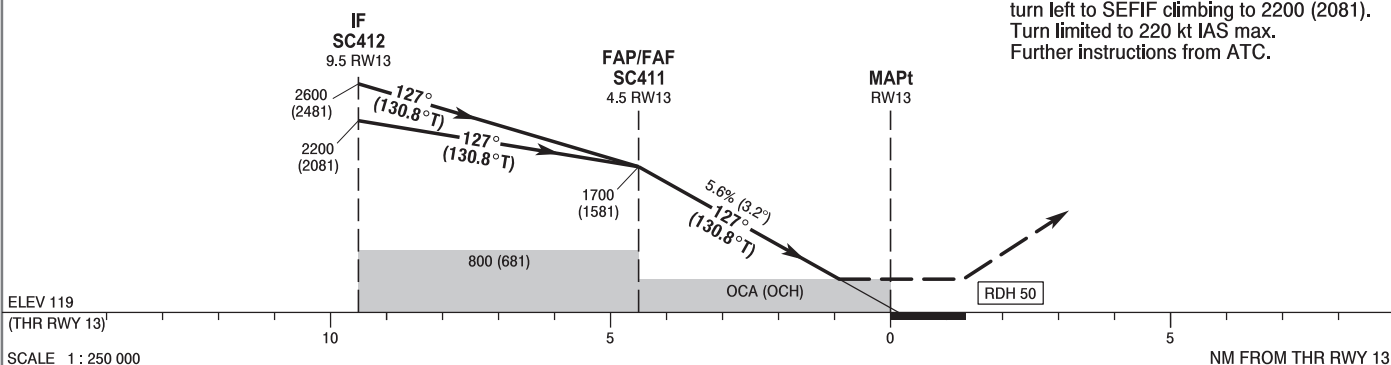
Correction: New procedure.

TRANSITION ALTITUDE 6500

Note: PAPI 3°

MISSED APPROACH

Climb on course 127° to SC421, then turn left to SEFIF climbing to 2200 (2081). Turn limited to 220 kt IAS max. Further instructions from ATC.



OCA (OCH)					Distance FAF - MAPt 4.5								
Cat. of ACFT	A	B	C	D	Speed	kt	80	100	120	140	160	180	
Straight - in	LNAV	480 (361)	480 (361)	480 (361)	480 (361)	Time	min : s	3 : 23	2 : 42	2 : 15	1 : 56	1 : 42	1 : 30
	LNAV / VNAV	410 (291)	420 (301)	430 (311)	440 (321)	Rate of descent	ft / min	450	560	670	790	900	1010
	LPV	332 (213)	344 (225)	352 (233)	363 (244)		Final approach distance/altitude (height)						
Circling (OCH AAL)	580 (425)	650 (495)	750 (595)	850 (695)	Distance		4	3	2	1			
					Altitude (height)		1530 (1411)	1190 (1071)	850 (731)	510 (391)			

STRONA WOLNA

INTENTIONALLY LEFT BLANK

Szczecin - Goleniów
RNP
RWY 13 (CAT A/B/C/D)

EPSC RNP RWY 13 FROM SEFIF

SEQUENCE NUMBER	PATH TERMINATOR	WAYPOINT IDENTIFIER	FLY - OVER	COURSE/TRACK °M (°T)	DISTANCE (NM)	TURN DIRECTION	ALTITUDE	SPEED (kt)	VPA/TCH	NAV SPEC
001	IF	SEFIF	-	-	-	-	+2200 ft	-		RNP APCH
002	TF	SC414	-	257 (260.65)	6.52	R	-	-220		RNP APCH
003	TF	SC413	-	307 (310.59)	5.00	R	-	-220		RNP APCH
004	TF	SC412	-	037 (040.67)	5.00	R	-	-220		RNP APCH
005	TF	SC411	-	127 (130.75)	5.00	-	+1700 ft	-	-3.2°/50	RNP APCH
006	TF	RW13	Y	127 (130.83)	4.50	-	@169 ft	-		RNP APCH
007	CF	SC421	Y	127 (130.82)	4.70	-	-	-220		RNP APCH
008	DF	SEFIF	-	-	-	L	+2200 ft	-220		RNP APCH

EPSC RNP RWY 13 FROM ORBOF

SEQUENCE NUMBER	PATH TERMINATOR	WAYPOINT IDENTIFIER	FLY - OVER	COURSE/TRACK °M (°T)	DISTANCE (NM)	TURN DIRECTION	ALTITUDE	SPEED (kt)	VPA/TCH	NAV SPEC
001	IF	ORBOF	-	-	-	-	+3500 ft	-		RNP APCH
004	TF	SC412	-	127 (130.67)	2.50	-	+2600 ft	-		RNP APCH
005	TF	SC411	-	127 (130.75)	5.00	-	+1700 ft	-	-3.2°/50	RNP APCH
006	TF	RW13	Y	127 (130.83)	4.50	-	@169 ft	-		RNP APCH
007	CF	SC421	Y	127 (130.82)	4.70	-	-	-220		RNP APCH
008	DF	SEFIF	-	-	-	L	+2200 ft	-220		RNP APCH

WAYPOINT IDENTIFIER	COORDINATES	
ORBOF (IAF)	53°43'20.4"N	014°37'59.7"E
SEFIF (IAF)	53°35'43.5"N	014°52'53.4"E
SC414	53°34'40.5"N	014°42'05.0"E
SC413	53°37'55.5"N	014°35'42.8"E
SC412 (IF)	53°41'42.9"N	014°41'11.2"E
SC411 (FAP/FAF)	53°38'27.5"N	014°47'33.5"E
RW13 (MAPt)	53°35'31.5"N	014°53'16.5"E
SC421 (MATF)	53°32'27.9"N	014°59'14.4"E

SBAS FAS Data Block Coding Data

EPSC RNP RWY 13	
Input Data	
Parameters	Values
Operation Type:	0
SBAS Provider:	1 (EGNOS)
Airport Identifier:	EPSC
Runway:	13
Runway Direction:	0 (None)
Approach Performance Designator:	0
Route Indicator:	
Reference Path Data Selector:	0
Reference Path Identifier:	E13A
LTP/FTP Latitude:	533531.4960N
LTP/FTP Longitude:	0145316.5275E
LTP/FTP Ellipsoidal Height (metres):	71.5
FPAP Latitude:	533438.6130N
Delta FPAP Latitude (seconds):	-52.8830
FPAP Longitude:	0145459.3360E
Delta FPAP Longitude (seconds):	102.8085
Threshold Crossing Height:	50.0
TCH Units Selector:	0 (feet)
Glidepath Angle (degrees):	3.20
Course Width (metres):	105.00
Length Offset (metres):	0
HAL (metres):	40.0
VAL (metres):	35.0

Output Data	
Data Block	10 03 13 10 05 0D 00 00 01 33 31 05 50 CD FF 16 DF A2 63 06 CB 16 DA 62 FE 31 23 03 F4 01 40 01 64 00 C8 AF 5A 46 CB A1
Calculated CRC Value	5A46CBA1

Required Additional Data (not CRC wrapped)	
ICAO Code	SC
LTP/FTP Orthometric Height (metres)	36.3