

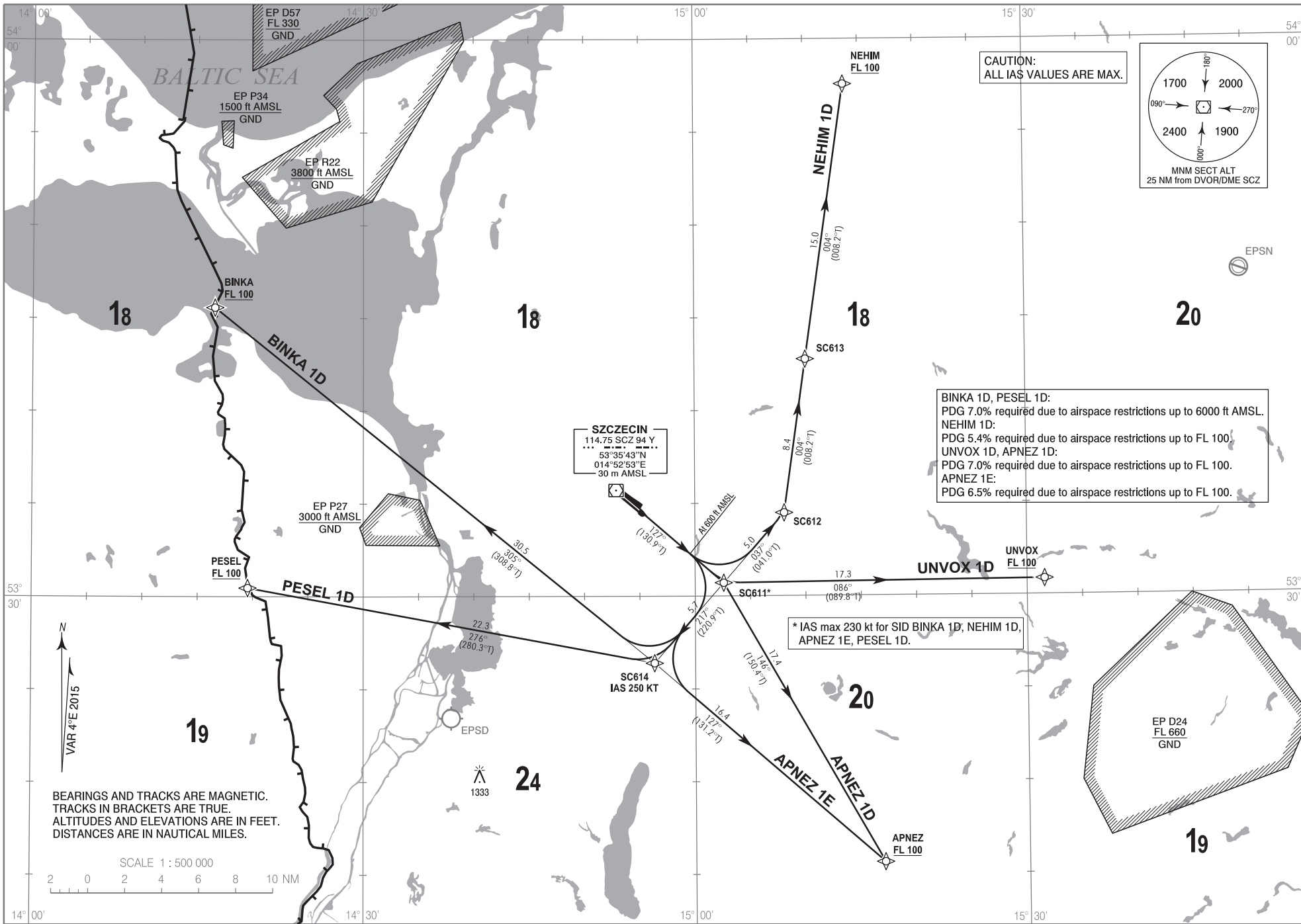
**RNP 1 (GNSS)
STANDARD DEPARTURE CHART
INSTRUMENT (SID) - ICAO**

TRANSITION ALTITUDE 6500

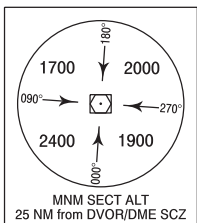
Szczecin TOWER
ALIS
121.255
132.130

**Szczecin - Goleniów
RWY 13**

Correction: New chart.



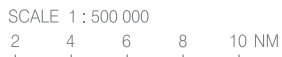
CAUTION:
ALL IAS VALUES ARE MAX.



BINKA 1D, PESEL 1D:
PDG 7.0% required due to airspace restrictions up to 6000 ft AMSL.
NEHIM 1D:
PDG 5.4% required due to airspace restrictions up to FL 100.
UNVOX 1D, APNEZ 1D:
PDG 7.0% required due to airspace restrictions up to FL 100.
APNEZ 1E:
PDG 6.5% required due to airspace restrictions up to FL 100.

* IAS max 230 kt for SID BINKA 1D, NEHIM 1D, APNEZ 1E, PESEL 1D.

BEARINGS AND TRACKS ARE MAGNETIC.
TRACKS IN BRACKETS ARE TRUE.
ALTITUDES AND ELEVATIONS ARE IN FEET.
DISTANCES ARE IN NAUTICAL MILES.



**RNP 1 (GNSS)
STANDARD DEPARTURE CHART
INSTRUMENT (SID) - ICAO**

**Szczecin - Goleniów
RWY 13**

BINKA 1D

PDG 7.0% REQUIRED DUE TO AIRSPACE RESTRICTIONS UP TO 6000 FT AMSL

SEQUENCE NUMBER	PATH TERMINATOR	WAYPOINT IDENTIFIER	FLY - OVER	COURSE/TRACK* °M (°T)	DISTANCE (NM)	TURN DIRECTION	ALTITUDE	SPEED (kt)	NAV SPEC
001	VA	-	-	127 (130.9)	-	-	+600 ft	-	RNP 1
002	DF	SC611	-	-	-	-	-	-230	RNP 1
003	TF	SC614	-	217 (220.9)	5.72	-	-	-250	RNP 1
004	TF	BINKA	-	305 (308.8)	30.50	-	+FL100	-	RNP 1

* FOR VA READ „VECTOR”

NEHIM 1D

PDG 5.4% REQUIRED DUE TO AIRSPACE RESTRICTIONS UP TO FL100

SEQUENCE NUMBER	PATH TERMINATOR	WAYPOINT IDENTIFIER	FLY - OVER	COURSE/TRACK* °M (°T)	DISTANCE (NM)	TURN DIRECTION	ALTITUDE	SPEED (kt)	NAV SPEC
001	VA	-	-	127 (130.9)	-	-	+600 ft	-	RNP 1
002	DF	SC611	-	-	-	-	-	-230	RNP 1
003	TF	SC612	-	037 (041.0)	5.00	-	-	-	RNP 1
004	TF	SC613	-	004 (008.2)	8.37	-	-	-	RNP 1
005	TF	NEHIM	-	004 (008.2)	14.98	-	+FL100	-	RNP 1

* FOR VA READ „VECTOR”

UNVOX 1D

PDG 7.0% REQUIRED DUE TO AIRSPACE RESTRICTIONS UP TO FL100

SEQUENCE NUMBER	PATH TERMINATOR	WAYPOINT IDENTIFIER	FLY - OVER	COURSE/TRACK* °M (°T)	DISTANCE (NM)	TURN DIRECTION	ALTITUDE	SPEED (kt)	NAV SPEC
001	VA	-	-	127 (130.9)	-	-	+600 ft	-	RNP 1
002	DF	SC611	-	-	-	-	-	-	RNP 1
003	TF	UNVOX	-	086 (089.8)	17.31	-	+FL100	-	RNP 1

* FOR VA READ „VECTOR”

APNEZ 1D

PDG 7.0% REQUIRED DUE TO AIRSPACE RESTRICTIONS UP TO FL100

SEQUENCE NUMBER	PATH TERMINATOR	WAYPOINT IDENTIFIER	FLY - OVER	COURSE/TRACK* °M (°T)	DISTANCE (NM)	TURN DIRECTION	ALTITUDE	SPEED (kt)	NAV SPEC
001	VA	-	-	127 (130.9)	-	-	+600 ft	-	RNP 1
002	DF	SC611	-	-	-	-	-	-	RNP 1
003	TF	APNEZ	-	146 (150.4)	17.39	-	+FL100	-	RNP 1

* FOR VA READ „VECTOR”

APNEZ 1E

PDG 6.5% REQUIRED DUE TO AIRSPACE RESTRICTIONS UP TO FL100

SEQUENCE NUMBER	PATH TERMINATOR	WAYPOINT IDENTIFIER	FLY - OVER	COURSE/TRACK* °M (°T)	DISTANCE (NM)	TURN DIRECTION	ALTITUDE	SPEED (kt)	NAV SPEC
001	VA	-	-	127 (130.9)	-	-	+600 ft	-	RNP 1
002	DF	SC611	-	-	-	-	-	-230	RNP 1
003	TF	SC614	-	217 (220.9)	5.72	-	-	-250	RNP 1
004	TF	APNEZ	-	127 (131.2)	16.43	-	+FL100	-	RNP 1

* FOR VA READ „VECTOR”

PESEL 1D

PDG 7.0% REQUIRED DUE TO AIRSPACE RESTRICTIONS UP TO 6000 FT AMSL

SEQUENCE NUMBER	PATH TERMINATOR	WAYPOINT IDENTIFIER	FLY - OVER	COURSE/TRACK* °M (°T)	DISTANCE (NM)	TURN DIRECTION	ALTITUDE	SPEED (kt)	NAV SPEC
001	VA	-	-	127 (130.9)	-	-	+600 ft	-	RNP 1
002	DF	SC611	-	-	-	-	-	-230	RNP 1
003	TF	SC614	-	217 (220.9)	5.72	-	-	-250	RNP 1
004	TF	PESEL	-	276 (280.3)	22.34	-	+FL100	-	RNP 1

* FOR VA READ „VECTOR”

WAYPOINT IDENTIFIER	COORDINATES	
DER13 (THR31)	53°34'38.6"N	014°54'59.3"E
SC611	53°30'43.0"N	015°02'35.1"E
SC612	53°34'29.1"N	015°08'04.9"E
SC613	53°42'45.6"N	015°10'04.3"E
SC614	53°26'23.9"N	014°56'18.7"E
BINKA	53°45'34.4"N	014°16'32.1"E
PESEL	53°30'28.0"N	014°19'33.0"E
UNVOX	53°30'51.0"N	015°31'35.0"E
NEHIM	53°57'34.0"N	015°13'40.0"E
APNEZ	53°15'38.0"N	015°17'00.0"E