

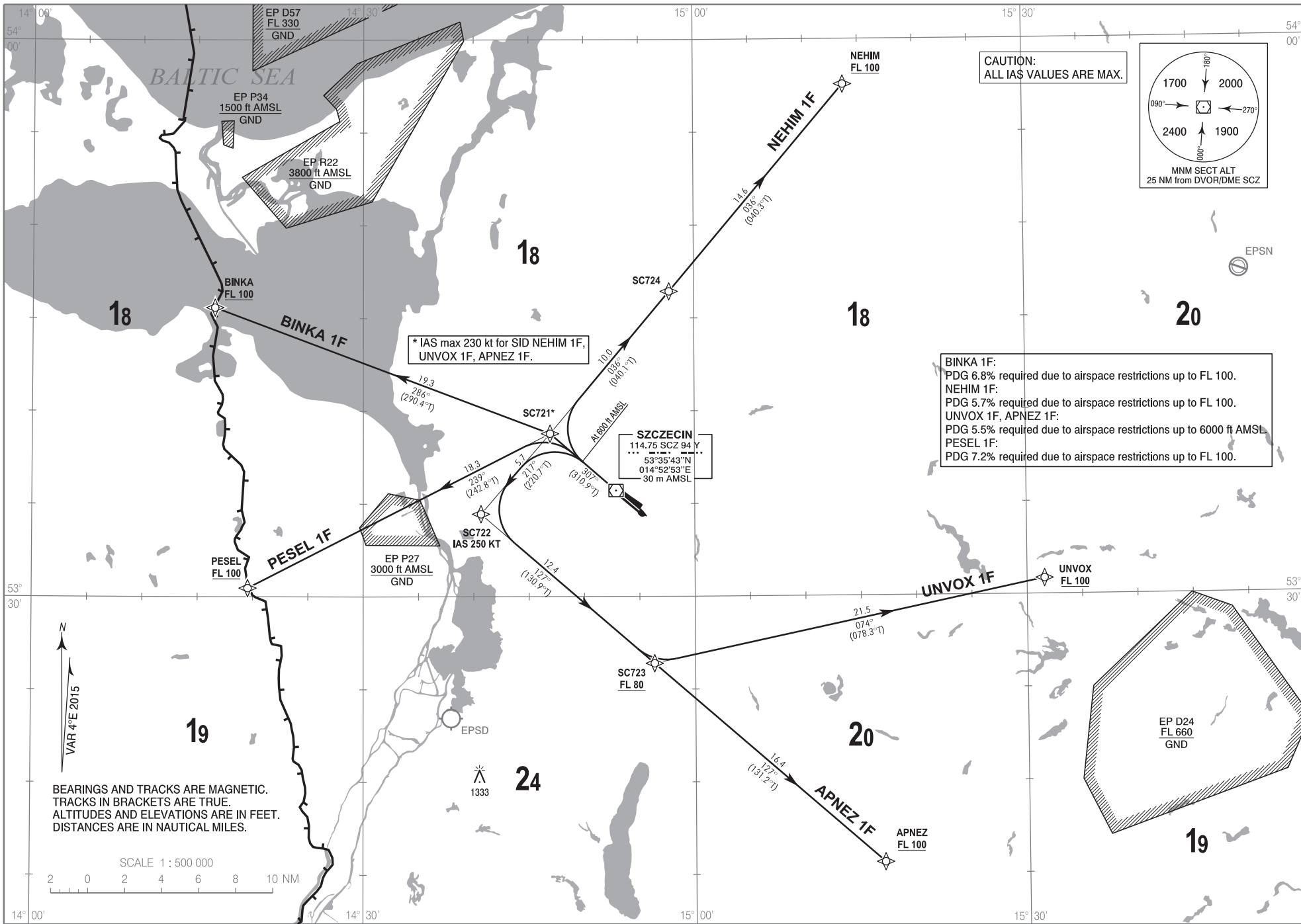
**RNP 1 (GNSS)
STANDARD DEPARTURE CHART
INSTRUMENT (SID) - ICAO**

TRANSITION ALTITUDE 6500

Szczecin TOWER
ATIS
121.255
132.130

**Szczecin - Goleniów
RWY 31**

Correction: New chart.



**RNP 1 (GNSS)
STANDARD DEPARTURE CHART
INSTRUMENT (SID) - ICAO**

**Szczecin - Goleniów
RWY 31**

BINKA 1F

PDG 6.8% REQUIRED DUE TO AIRSPACE RESTRICTIONS UP TO FL100

SEQUENCE NUMBER	PATH TERMINATOR	WAYPOINT IDENTIFIER	FLY - OVER	COURSE/TRACK °M (°T)	DISTANCE (NM)	TURN DIRECTION	ALTITUDE	SPEED (kt)	NAV SPEC
001	VA	-	-	307 (310.9)	-	-	+600 ft	-	RNP 1
002	DF	SC721	-	-	-	-	-	-	RNP 1
003	TF	BINKA	-	286 (290.4)	19.30	-	+FL100	-	RNP 1

* FOR VA READ „VECTOR”

NEHIM 1F

PDG 5.7% REQUIRED DUE TO AIRSPACE RESTRICTIONS UP TO FL100

SEQUENCE NUMBER	PATH TERMINATOR	WAYPOINT IDENTIFIER	FLY - OVER	COURSE/TRACK °M (°T)	DISTANCE (NM)	TURN DIRECTION	ALTITUDE	SPEED (kt)	NAV SPEC
001	VA	-	-	307 (310.9)	-	-	+600 ft	-	RNP 1
002	DF	SC721	-	-	-	-	-	-230	RNP 1
003	TF	SC724	-	036 (040.1)	10.00	-	-	-	RNP 1
004	TF	NEHIM	-	036 (040.3)	14.60	-	+FL100	-	RNP 1

* FOR VA READ „VECTOR”

UNVOX 1F

PDG 5.5% REQUIRED DUE TO AIRSPACE RESTRICTIONS UP TO 6000 FT AMSL

SEQUENCE NUMBER	PATH TERMINATOR	WAYPOINT IDENTIFIER	FLY - OVER	COURSE/TRACK °M (°T)	DISTANCE (NM)	TURN DIRECTION	ALTITUDE	SPEED (kt)	NAV SPEC
001	VA	-	-	307 (310.9)	-	-	+600 ft	-	RNP 1
002	DF	SC721	-	-	-	-	-	-230	RNP 1
003	TF	SC722	-	217 (220.7)	5.72	-	-	-250	RNP 1
004	TF	SC723	-	127 (130.9)	12.35	-	+FL80	-	RNP 1
005	TF	UNVOX	-	074 (078.3)	21.54	-	+FL100	-	RNP 1

* FOR VA READ „VECTOR”

APNEZ 1F

PDG 5.5% REQUIRED DUE TO AIRSPACE RESTRICTIONS UP TO 6000 FT AMSL

SEQUENCE NUMBER	PATH TERMINATOR	WAYPOINT IDENTIFIER	FLY - OVER	COURSE/TRACK °M (°T)	DISTANCE (NM)	TURN DIRECTION	ALTITUDE	SPEED (kt)	NAV SPEC
001	VA	-	-	307 (310.9)	-	-	+600 ft	-	RNP 1
002	DF	SC721	-	-	-	-	-	-230	RNP 1
003	TF	SC722	-	217 (220.7)	5.72	-	-	-250	RNP 1
004	TF	SC723	-	127 (130.9)	12.35	-	+FL80	-	RNP 1
005	TF	APNEZ	-	127 (131.2)	16.43	-	+FL100	-	RNP 1

* FOR VA READ „VECTOR”

PESEL 1F

PDG 7.2% REQUIRED DUE TO AIRSPACE RESTRICTIONS UP TO FL100

SEQUENCE NUMBER	PATH TERMINATOR	WAYPOINT IDENTIFIER	FLY - OVER	COURSE/TRACK °M (°T)	DISTANCE (NM)	TURN DIRECTION	ALTITUDE	SPEED (kt)	NAV SPEC
001	VA	-	-	307 (310.9)	-	-	+600 ft	-	RNP 1
002	DF	SC721	-	-	-	-	-	-	RNP 1
003	TF	PESEL	-	239 (242.8)	18.32	-	+FL100	-	RNP 1

* FOR VA READ „VECTOR”

WAYPOINT IDENTIFIER	COORDINATES	
DER31 (THR13)	53°35'31.5"N	014°53'16.5"E
SC721	53°38'47.4"N	014°46'55.4"E
SC722	53°34'27.4"N	014°40'39.4"E
SC723	53°26'23.8"N	014°56'18.6"E
SC724	53°46'26.1"N	014°57'44.8"E
BINKA	53°45'34.4"N	014°16'32.1"E
PESEL	53°30'28.0"N	014°19'33.0"E
UNVOX	53°30'51.0"N	015°31'35.0"E
NEHIM	53°57'34.0"N	015°13'40.0"E
APNEZ	53°15'38.0"N	015°17'00.0"E