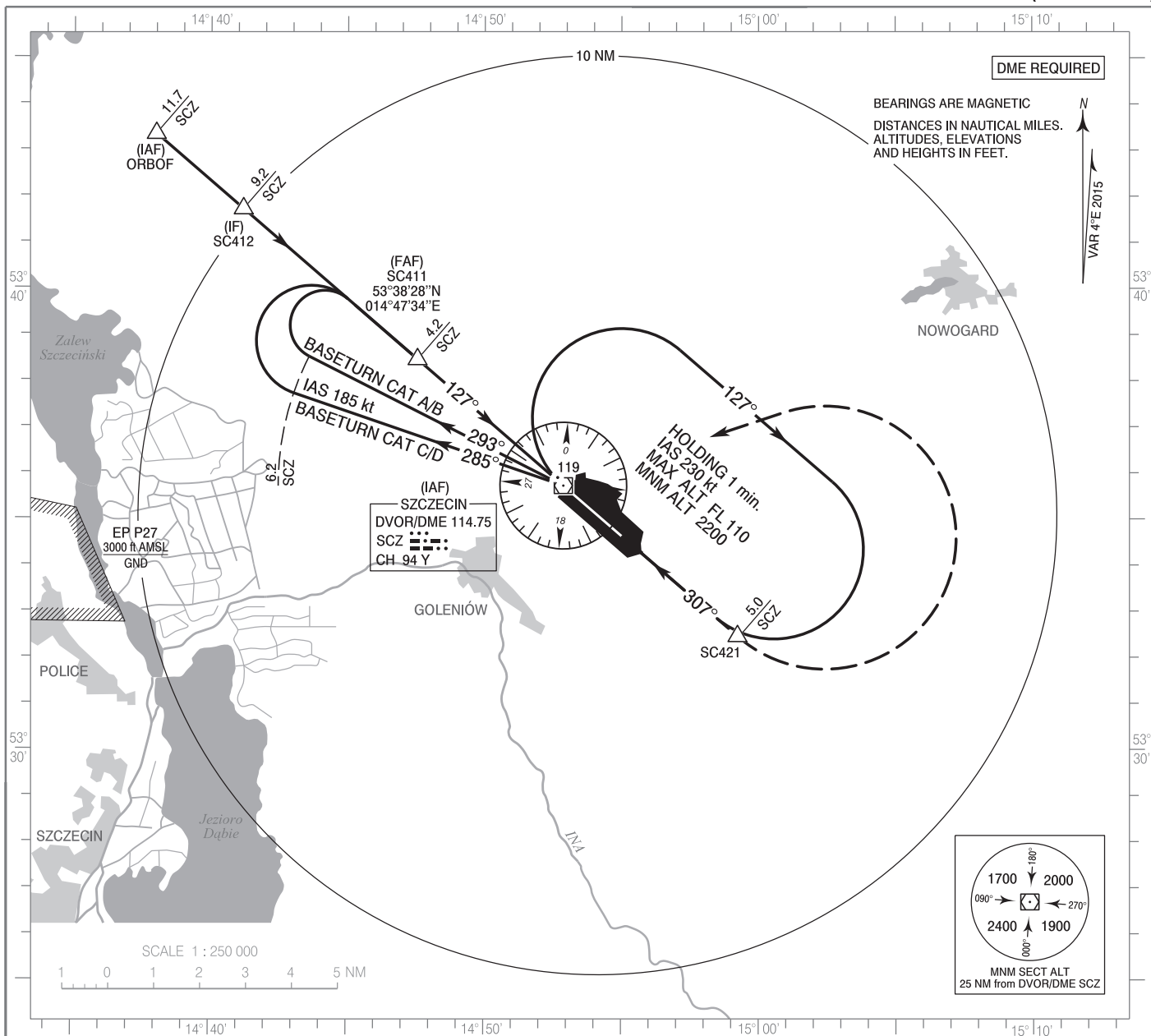


**INSTRUMENT
APPROACH
CHART - ICAO**

AERODROME ELEV 155 ft
THR RWY 13 ELEV 119 ft
HEIGHTS RELATED TO THR RWY 13

Szczecin TOWER 121.255
ATIS 132.130

**Szczecin - Goleniów
VOR
RWY 13 (CAT A/B/C/D)**

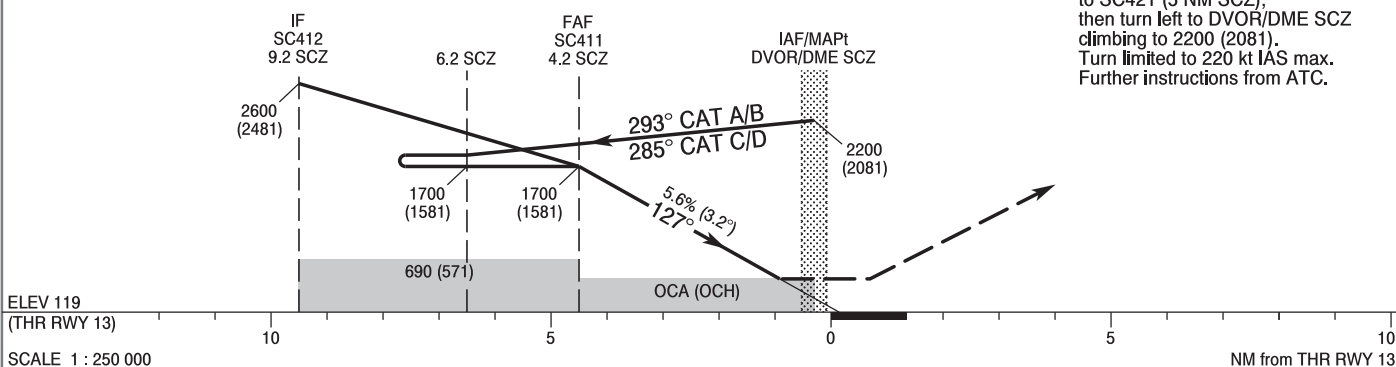


Correction: New procedure.

TRANSITION ALTITUDE 6500

Note:
PAPI 3°

MISSED APPROACH
Climb on RDL 127° SCZ to SC421 (5 NM SCZ), then turn left to DVOR/DME SCZ climbing to 2200 (2081). Turn limited to 220 kt IAS max. Further instructions from ATC.



ELEV 119 (THR RWY 13) SCALE 1 : 250 000

Cat. of ACFT	OCA (OCH)				Distance FAF - MAPt 4.2 NM							
	A	B	C	D	Speed	kt	80	100	120	140	160	180
Straight - in	470 (351)	470 (351)	470 (351)	470 (351)	Time	min : s	3 : 09	2 : 31	2 : 06	1 : 48	1 : 34	1 : 24
					Rate of descent	ft / min	460	570	690	800	910	1030
					Final approach distance/altitude (height)							
Circling (OCH AAL)	580 (425)	650 (495)	750 (595)	850 (695)	Distance		3	2	1			
					Altitude (height)		1300 (1181)	960 (841)	620 (501)			

INSTRUMENT
APPROACH
CHART - ICAOSzczecin - Goleniów
VOR
RWY 13 (CAT A/B/C/D)

FIX / POINT	LATITUDE	LONGITUDE	FIX FORMATION	
IAF DVOR/DME SCZ	53°35'43.5"N	014°52'53.4"E		
IAF ORBOF	53°43'20.4"N	014°37'59.7"E	310.82° GEO (307° MAG) DVOR SCZ	11.69 NM DME SCZ
IF SC412	53°41'42.9"N	014°41'11.2"E	310.82° GEO (307° MAG) DVOR SCZ	9.19 NM DME SCZ
FAF SC411	53°38'27.5"N	014°47'33.5"E	310.82° GEO (307° MAG) DVOR SCZ	4.19 NM DME SCZ
MAPt DVOR/DME SCZ	53°35'43.5"N	014°52'53.4"E		
SC421	53°32'27.9"N	014°59'14.4"E	130.73° GEO (127° MAG) DVOR SCZ	5.00 NM DME SCZ
Final approach descent angle: 3.21°				